

IoT Product & Solution

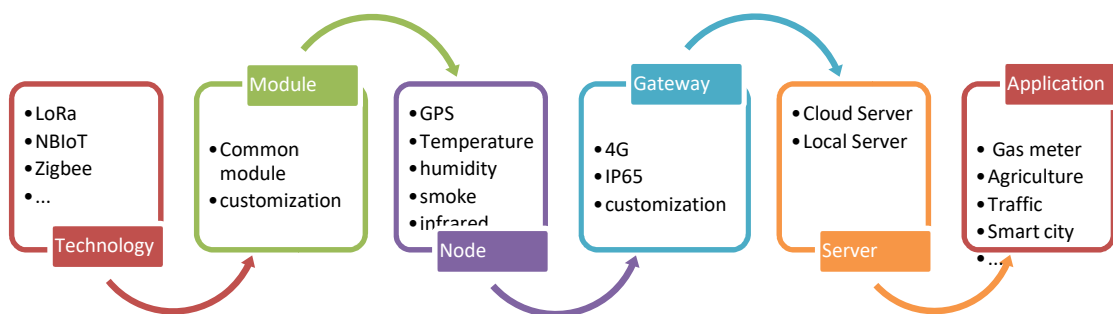
Dapu specialize in IoT product and solution with LoRa, NBIoT, Zigbee and other technology.

Dapu supply the Product as:

- RF Module
- Sensor End Node
- Gateway
- IoT Server
- App



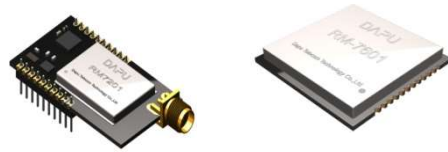
● Full solution of IoT



● RF Module

The RM-XXXX series is a secure CE/FCC certified, low-power RF module, that provides long-range, low bit rate transmitting data to RF allocations.

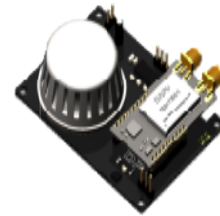
With the functionality implemented, the RM-XXXX providing bi-directional data communication up to 15Km line-of-sight and over 2Km into harsh environment or more.



The secure transmission with security protocols such as 'packet engine up to 256 bytes with CRC', the long battery by fitting with ultra low power consumption transceiver and MCU, the easier connectivity with superior transmit power and receive sensitivity.

● Sensor Node

The RN-XXXX series is a sensor node which is a component of a larger IoT network of sensors. Each node in the IoT network is responsible for collecting data about the environment around it and sending that data to processors in the network.



There are a number of different environmental conditions in which a sensor node can detect changes. GPS, Smoke, Infrared, humidity, Temperature and pressure changes are some of the most common.

● IoT Gateway

RG-XXXX series is a gateway which is designed to meet the needs of M2M and IoT service operators.

IoT Gateway makes easier the set-up of the network and end-points functioning.

It reduces also the infrastructure costs and enables a compatibility with existing internet related protocols and thus, allows the industrial operator to focus on its own core business.



● Application

The Internet of Things is transforming every corner of life: the home, the office, city streets and beyond. IoT products give us greater control over door locks, lights and appliances;

Dapu supply the best and most popular IoT solution, from smart home devices to enterprise platforms to the software and tools you need to build your own smart, connected product.

