

Customer Code : _____

DATASHEET

DAPU P/N: DPA7540M0000AA0ZNA0

DAPU			Customer Approval
Drew	Audited	Approved	Stamp, please! Thanks!
leifangmin	zhangpeng xiang	zhaowei	
Date: 2024.12.16			

Guangdong Dapu Telecom Technology Co.,Ltd

Building 5, No.24, Industrial East Road, Songshanhu Park, Dongguan, Guangdong, P.R. China

TEL: 0086-0769-88010888 FAX: 0086-0769-81800098



Table of amendment

Version	Revision contents	Prepared by	Revised date
1.0	The first issued	leifangmin	2024.12.16

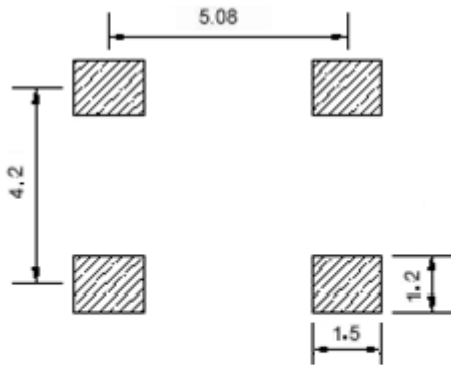


1. Electrical Parameters

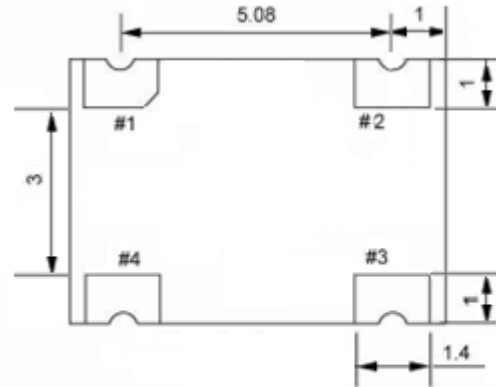
Item	Description	Parameters				Test Condition
		Min.	Min.	Min.	Unit	
1	Frequency	40.00			MHz	
2	Output Waveform	15			pF	CMOS
3	Rise / Fall Time	-	-	5	ns	10%~90%V _{cc}
4	Start up Time	-	-	10	ms	
5	Duty Cycle	45	50	55	%	
6	Output Voltage High	0.9V _{cc}	-	-	V	
7	Output Voltage Low	-	-	0.1V _{cc}	V	
8	Initial Frequency Tolerance	-5	-	+5	× 10 ⁻⁶	@25°C ± 2°C
9	Frequency Tolerance vs. Operating Temperature Range	10	-	+10	× 10 ⁻⁶	T _A varied from -40°C to 85°C, measurement referenced to frequency observed with f _{ref} =(f _{max} +f _{min})/2, V _{cc} =3.3V,
10	Supply Voltage (V _{cc})	3.13	3.3	3.47	V	
11	Current	-	-	20	mA	
12	Aging Tolerance	-3	-	+3	× 10 ⁻⁶ /year	@25°C ± 2°C
13	Operable Temperature	-40	~	+85	°C	
14	Storage Temperature	-55	~	+125	°C	



2. Mechanical Structure (mm)



Solder pad layout



Bottom view



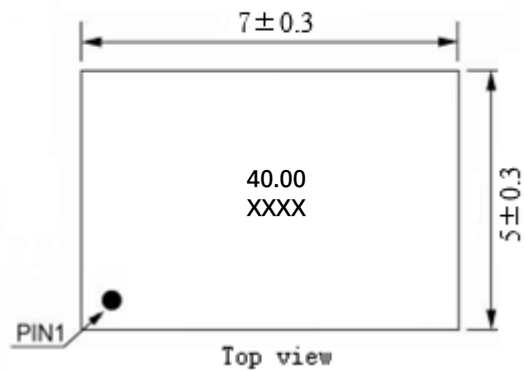
Right view



Side view

PIN FUNCTION

PIN	NOTATION	FUNCTION
1	NC	Not Connect
2	GND	GND
3	OUTPUT	RF Output
4	VCC	Supply Voltage

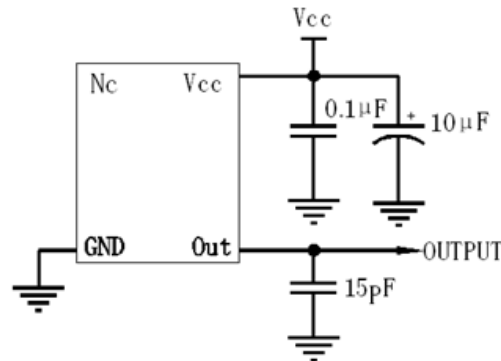


Top view

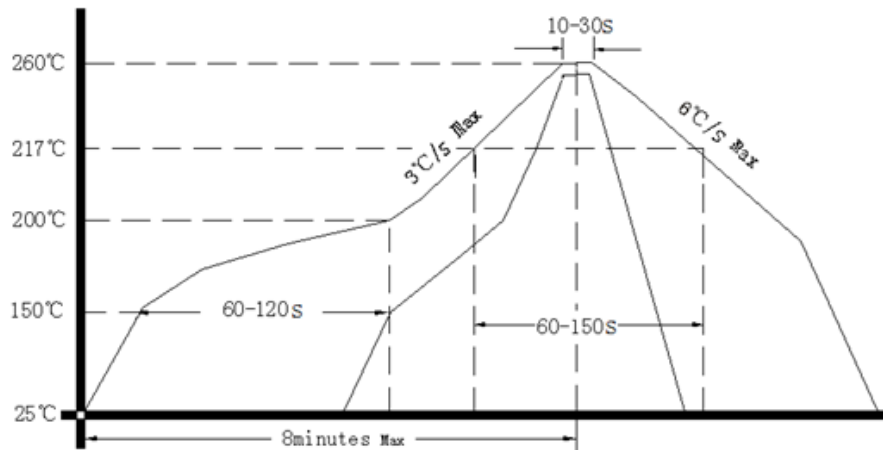
- Note1:** Tolerance ± 0.1 mm without mark
Note2: The first two xx representative: year
 After two xx representative: week
Note3: Referential weight 0.2g



3. Test Circuit



4. Reflow Soldering Curve (RoHS)



5. Package: Tape & Reel (mm)

