

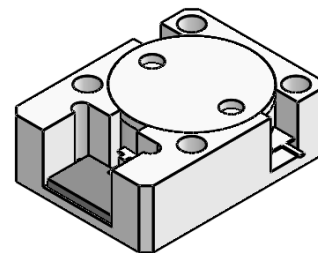


DP3675S

ENG PART:DP-19.1X25.4ID-5700T6000-CW

5700MHz to 6000MHz Single-Junction Drop-in Isolator

| REV. | DESCRIPTION | REVISOR | DATE | APPROVED |
|------|--------------------|---------|------------|----------|
| 1 | Creating datasheet | ZC.Wu | 2025/01/02 | Nick |

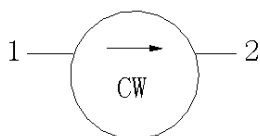


Applications:

- Wireless Infrastructure
- Power Amplifier

Features:

- Operating frequency range: 5700MHz to 6000MHz
- Operating temperature range: -30°C to +75°C
- Storage temperature range: -50°C to +125°C
- Small surface-mount package delivered on T&R
- BeOfree&RoHS compliant



Block Diagram



Electrical Specifications:

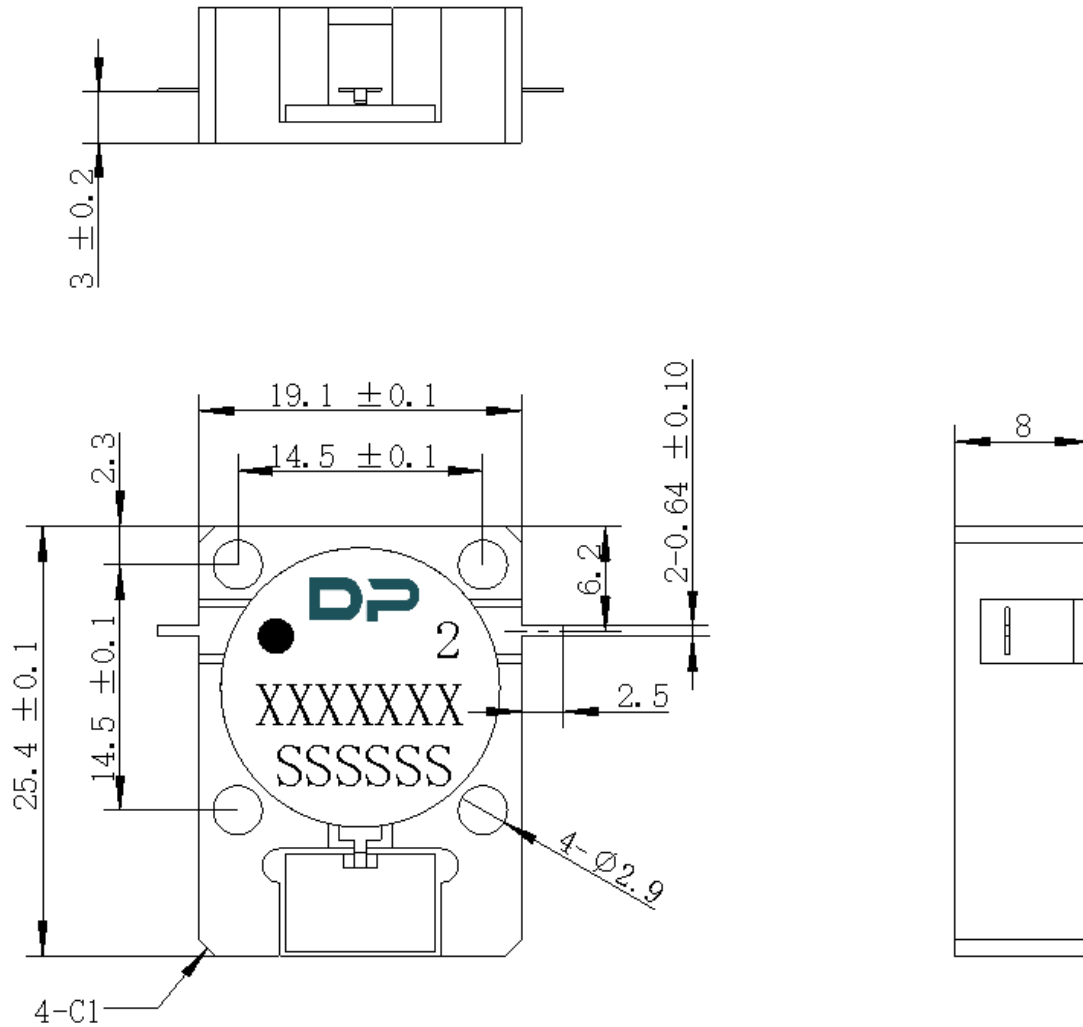
| ITEM | SPECIFICATION | |
|----------------------------|---------------|----------|
| Frequency | 5700~6000 | MHz |
| Direction | CW | |
| Impedance | Typ: 50 | Ω |
| Insertion Loss (Max.) | 0.4 | dB |
| Isolation (Min.) | 20 | dB |
| Return Loss (Min.) | 20 | dB |
| 3rd IMD (Max.) | / | dBc |
| 2nd harmonic attenuation | 10 | dB |
| 3rd harmonic attenuation | 5 | dB |
| Power FWD/REV/PEAK | 100/100/800 | W |
| Termination/Attenuator | 150/- | W/dB |
| Input Impedance ,real | / | Ω |
| Input Impedance ,imaginary | / | Ω |

Notes:

1. Exposure to maximum rating conditions for extended periods may reduce device reliability. There is no damage to device with only one parameter set at the limit and all other parameters set at or below their nominal value. Exceeding any of the limits listed here may result in permanent damage to the device.
2. Performance is guaranteed under the conditions listed in this table and over the operating temperature range.



Mechanical Specifications:



Unit: Millimeters

Notes:

1. The circuit is silver-plated.
2. Tolerance ±0.2mm unless otherwise specified.
3. Co-planarity Specification: 0.1mm maximum.
4. Part Number, Lot Code, and Port Designation are printed on the top side of device.
5. Part Number format shall be XXXXXXX
6. Serial Number format shall be SSSSSS
7. The black dot on the label represents the input port