

Travelling Merchant: \_\_\_\_\_

# DATASHEET

Standard: DP8Z12000001

Plot			The Label
Drew	Audited	Approved	Stamp, please! Thanks!
Date: 2019.08.23			

## Guangdong Dapu Telecom Technology Co.,Ltd

Bldg13-16,.N.Ind.Zone,SSL Industry Park, Dongguan City, Guangdong Province, China

TEL: 0086-0769-88010888 FAX: 0086-0769-81800098

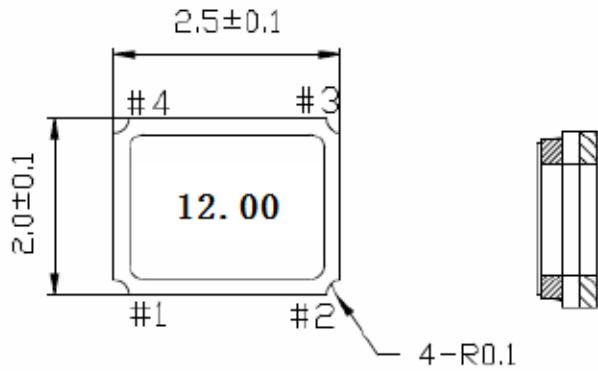


## 1、Electrical Parameters

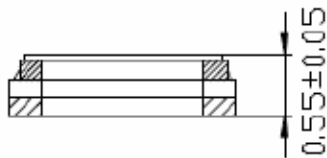
MODEL: DP8Z12000001							
No.	Parameters	SYM.	Electrical Spec.				Notes
			Min.	Typ.	Max.	Units	
1	Nominal Frequency	FL	12.00			MHz	
2	Oscillation Mode	-	Fundamental			-	
3	Load Capacitance	CL	20			pF	
4	Frequency Tolerance	-	-10	-	+10	$\times 10^{-6}$	at 25°C $\pm 2^\circ\text{C}$
5	Frequency Stability	-	-30	-	+30	$\times 10^{-6}$	Over Operating Temp. Range (Reference 25°C)
6	Operating Temperature Range	-	-40	~	+85	°C	
7	Storage Temperature Range	-	-40	~	+85	°C	
8	Aging	-	-3	-	+3	$\times 10^{-6}$	Per Year
9	Drive Level	DL	-	-	100	uW	
10	Equivalent Series Resistance	Rr	-	-	150	$\Omega$	
11	Shunt Capacitance	C0	-	-	3	pF	
12	Insulation Resistance	IR	500	-	-	M $\Omega$	at DC 100V
13	ESD Level	Human Body Model,class2: 2000V to 4000V; ANSI/ESDA/JEDEC JS-001-2010.					
		Machine Model, class B: 200V to 400V; ANSI/ESDA/JEDEC JS-001-2010.					
14	Moisture Sensitivity Level	Level 2.					
15	Vibration	Test Condition: 0.75mm ;acceleration:10g;10Hz~2000Hz, one cycle per 30 min, test 2 hour. (3 times for each 3 directions X , Y , Z ).IEC 68-2-06 Test Fc.					
16	Shock	100g; 6ms; half sine wave (3 times for each 3 directions X , Y , Z ),IEC 68-2-27 Test Ea/Severity 50A.					



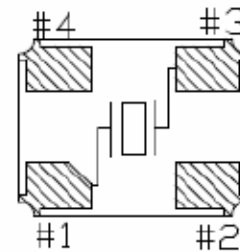
## 2、Mechanical Structure(mm)



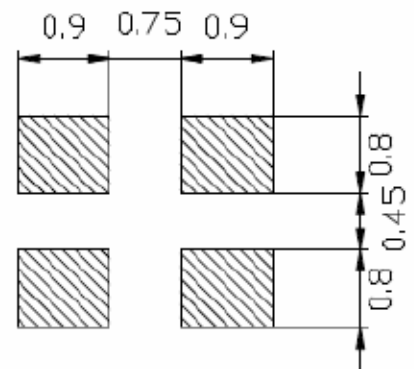
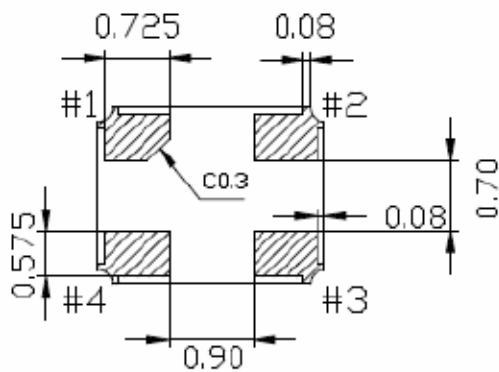
PIN CONNECT	
1,3	Crystal
2,4	GND



<TOP VIEW>



LAND PATTERN(REFERENCE)

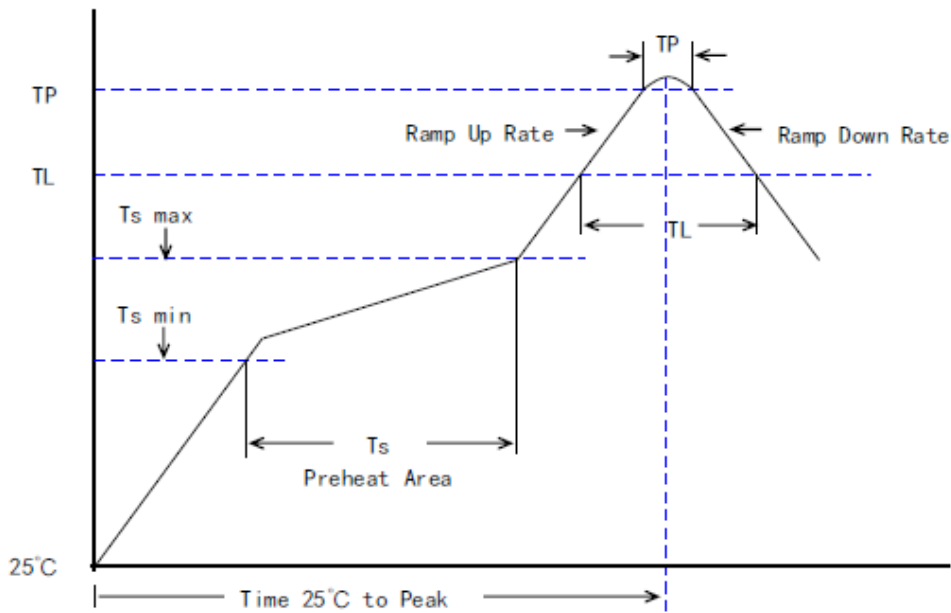


**Note1:** Tolerance ±0.2mm

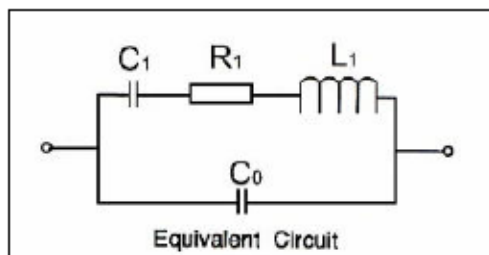


### 3、 Reflow Soldering Curve (RoHS)

REFER: JEDEC J-STD-020D	
Profiles Feature	Pb-Free Assembly
Preheat/Soak	
Temperature Min (Ts min)	150°C
Temperature Max (Ts max)	200°C
Time (Ts) from (Ts min to Ts max)	60-120 seconds
Ramp-up rate (TL to TP)	3°C/second max.
Liquidous temperature (TL)	217°C
Time (TL) maintained above TL	60-150 seconds
Peak/Classification Temperature (TP)	260±5°C
Time within 5°C of actual Peak Temperature (TP)	20~40 seconds
Ramp-down rate (TP to TL)	6°C/second max.
Time 25 ° C to peak temperature	8 minutes max.
Suggest reflow times	3 Times max

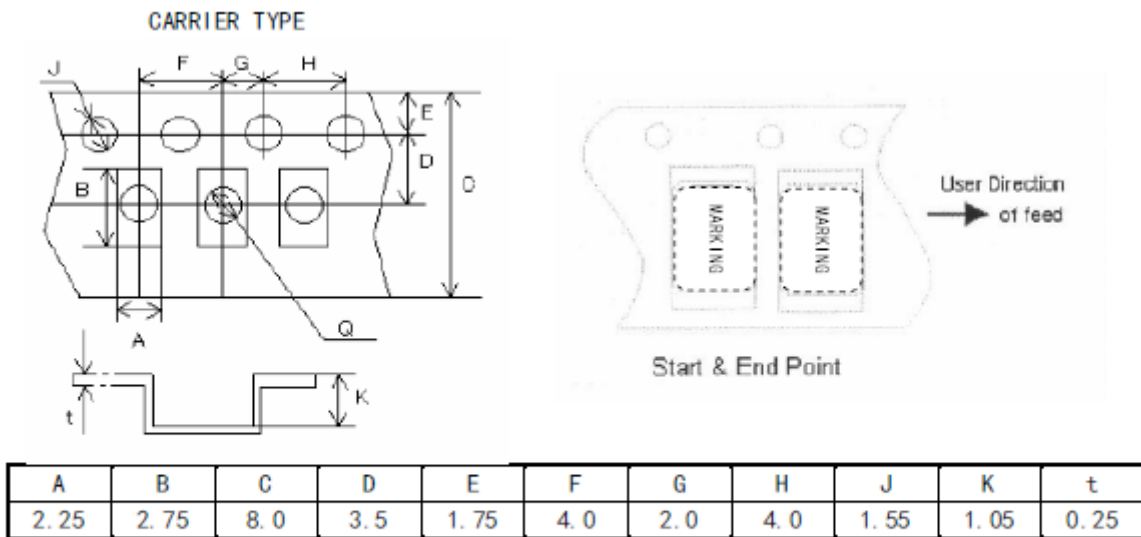


### 4、 Equivalent Circuit

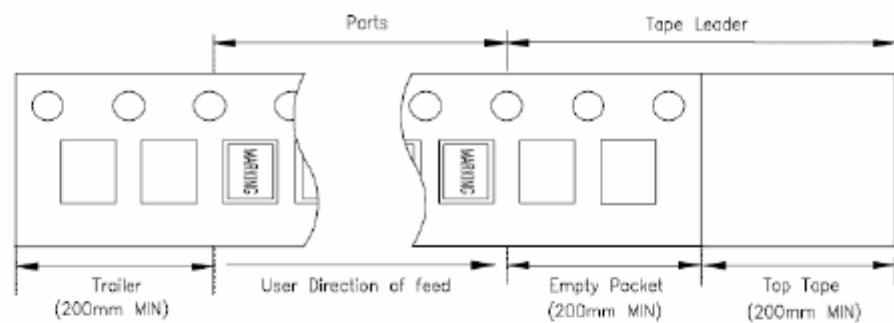




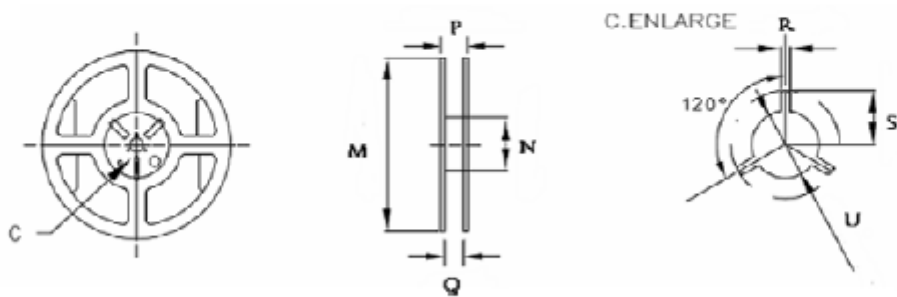
### 5、 Package: Tape & Reel (mm)



REMARK:



REEL: 3000 PCS/Reel



M	N	P	Q	R	S	U
178.0	60.2	11.5	8.0	2.5	11.0	13.0