



DP2675S

ENG PART: DP-6.2IM-9.0T10.0-CW

9.0GHz to 10.0GHz Single-Junction Surface Mount Isolator

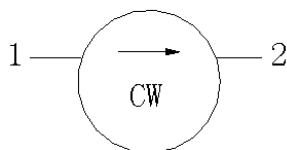
REV.	DESCRIPTION	REVISOR	DATE	APPROVED
1	Creaiting datasheet	ZC.Wu	2023/7/7	Nick

Applications:

- Wireless Infrastructure
- Power Amplifier

Features:

- Operating frequency range: 9.0GHz to 10.0GHz
- Operating temperature range: -40°C to +85°C
- Storage temperature range: -54°C to +125°C
- Small surface-mount package delivered on T&R
- BeOfree&RoHS compliant



Block Diagram



Electrical Specifications:

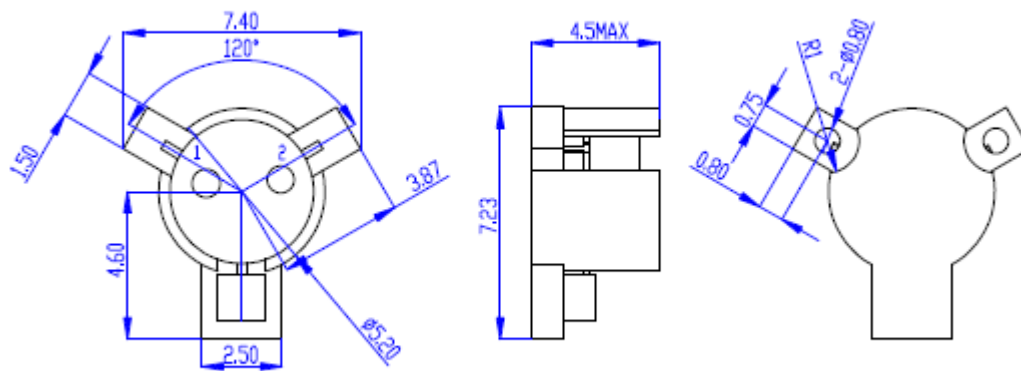
ITEM	SPECIFICATION	
Frequency	9.0~10.0	GHz
Direction	CW	
Impedance	Typ: 50	Ω
Insertion Loss (Max.)	0.40	dB
Isolation (Min.)	18.0	dB
Return Loss (Min.)	20.0	dB
3rd IMD (Max.)	-	dBc
Extend frequency	-	MHz
Group delay	-	ns
2nd harmonic suppression	-	dBc
3rd harmonic suppression	-	dBc
Power	100w pulse 10% 50usec	W
Termination/Attenuator	2/-	W/dB
Input Impedance ,real	-	Ω
Input Impedance ,imaginary	-	Ω

Notes:

1. Exposure to maximum rating conditions for extended periods may reduce device reliability. There is no damage to device with only one parameter set at the limit and all other parameters set at or below their nominal value. Exceeding any of the limits listed here may result in permanent damage to the device.
2. Performance is guaranteed under the conditions listed in this table and over the operating temperature range.
3. Performance will not degrade by > 10% (Insertion loss > 20%) with an operating temperature of up to 130 °C.



Mechanical Specifications:



Unit: Millimeters

Notes:

1. The housing and pins are silver-plated.
2. Tolerance ± 0.2 mm unless otherwise specified.
3. Co-planarity Specification: 0.1mm maximum.