

Customer Code: _____

DATASHEET

DAPU P/N: DP7X22M1184001

DAPU			Customer Approval
Drew	Audited	Approved	Stamp, please! Thanks!
Date: 2023.09.26			

Guangdong Dapu Telecom Technology Co.,Ltd

Building 5, No.24, Industrial East Road, Songshanhu Park, Dongguan, Guangdong, P.R. China

TEL: 0086-0769-88010888 FAX: 0086-0769-81800098

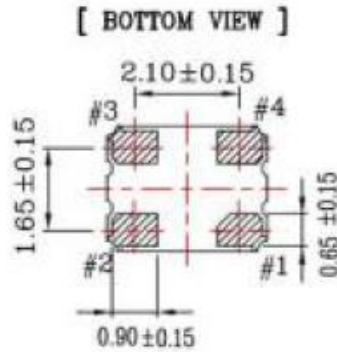
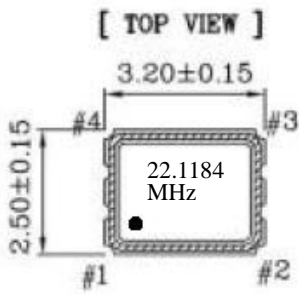


1、Electrical Parameters

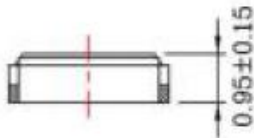
MODEL: DP7X22M1184001							
No.	Parameters	SYM	Electrical Spec.				Notes
			Min.	Typ.	Max.	Units	
1	Nominal Frequency	FL	22.1184			MHz	
2	Output Waveform		CMOS				
3	Output Load:	CL	15			pF	
4	Symmetry	-	45	50	55	%	
5	Frequency Tolerance	FT	-10		+10	$\times 10^{-6}$	
6	Frequency Tolerance vs. Operating Temperature Range	TC	-20		+20	$\times 10^{-6}$	
7	Operating Temperature	Topr	-40		+85	$^{\circ}\text{C}$	The operating temperature range over which the frequency stability is measured.
8	Storage Temperature	Tstg	-55	~	+125	$^{\circ}\text{C}$	
9	Supply Voltage	Vcc	2.97	3.3	3.63	V	
10	Supply Current	Icc			10	mA	
11	Aging First Year		-3		+3	$\times 10^{-6}$	
12	Start up time				2	ms	
13	Rise/ Fall Time	Tr/Tf	-	-	5	ns	10%-90% Vdd Level
14	“H” Output Voltage	VOH	Vdd*0.9			V	
15	“l” Output Voltage	VOL			Vdd*0.1	V	
16	Output Enable		0.7*Vdd or Floating			V	Pin 1 Tri-state
17	Output Disable				0.3*Vdd	V	



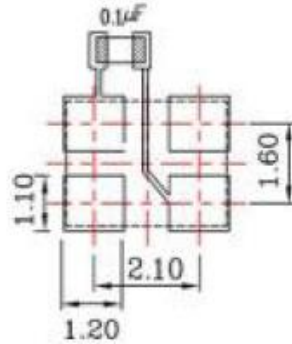
2、Mechanical Structure(mm)



[SIDE VIEW]



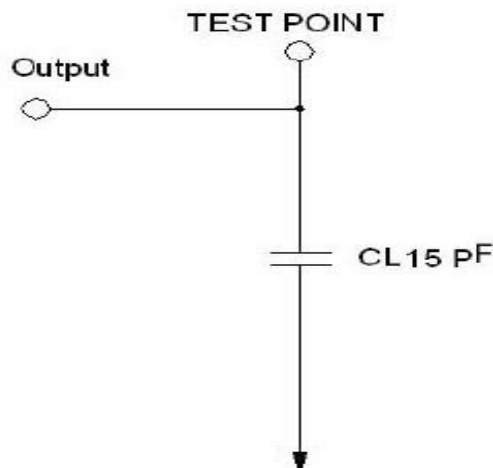
* To ensure optimal oscillator performance,
Place a by-pass capacitor of 0.1µF as
close to the part as possible between
VDD and GND pads.



Pin	Function
#1	Tri-State
#2	GND
#3	Output
#4	V _{DD}

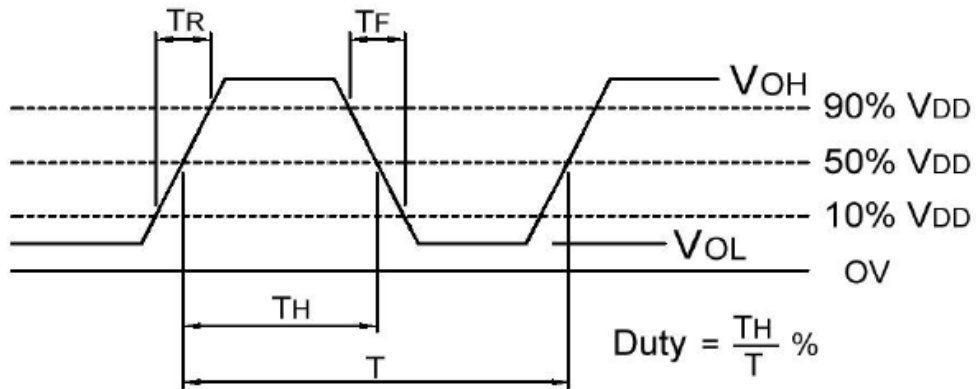
Note1: Tolerance $\pm 0.2\text{mm}$ without mark

3、Test Circuit

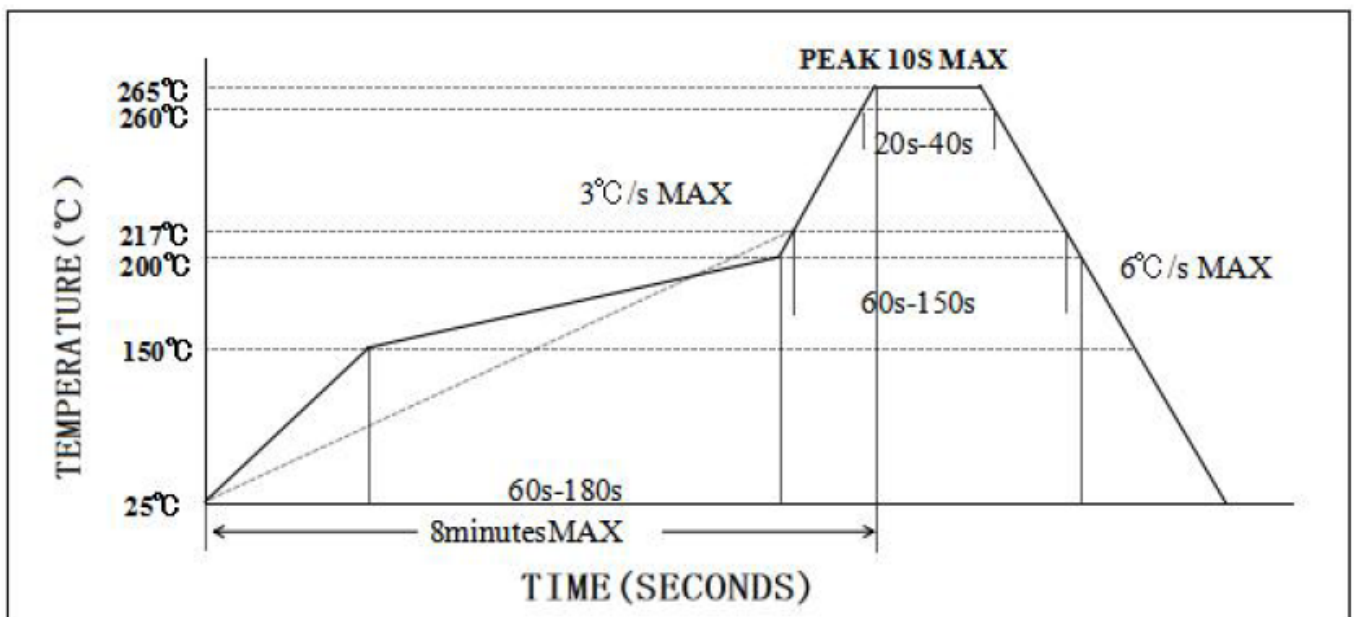




4、 Output Waveform(CMOS Load)



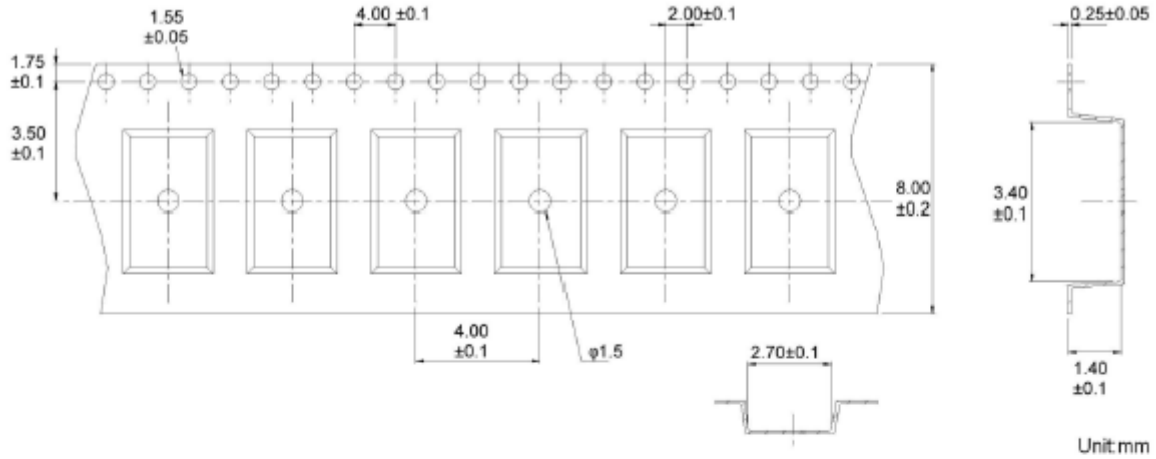
5、 Reflow Soldering Curve (RoHS)



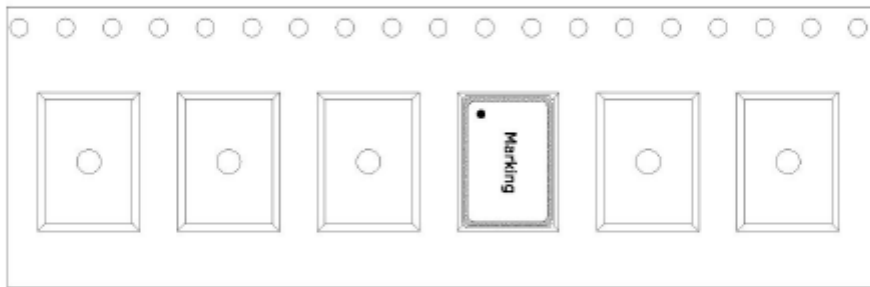


6、 Package: Tape & Reel (mm)

➤ TAPE (CARRIER) DIMENSIONS



➤ THE DIRECTION OF PACKING



➤ REEL DIMENSIONS

