

CUSTOMER: _____

DATASHEET

PRODUCT TYPE: _____ DPTC2016 _____

DAPU P/N: T2016G-A5A9-26.00MHz

| Plot | | | The Label |
|------------------|---------|----------|------------------------|
| Drew | Audited | Approved | Stamp, please! Thanks! |
| Jianhua LIN | David | William | |
| Date: 2023.09.25 | | | |

Guangdong Dapu Telecom Technology Co.,Ltd

Building 5, No.24, Industrial East Road, Songshanhu Park, Dongguan, Guangdong, P.R. China

TEL: 0086-0769-88010888 FAX: 0086-0769-81800098



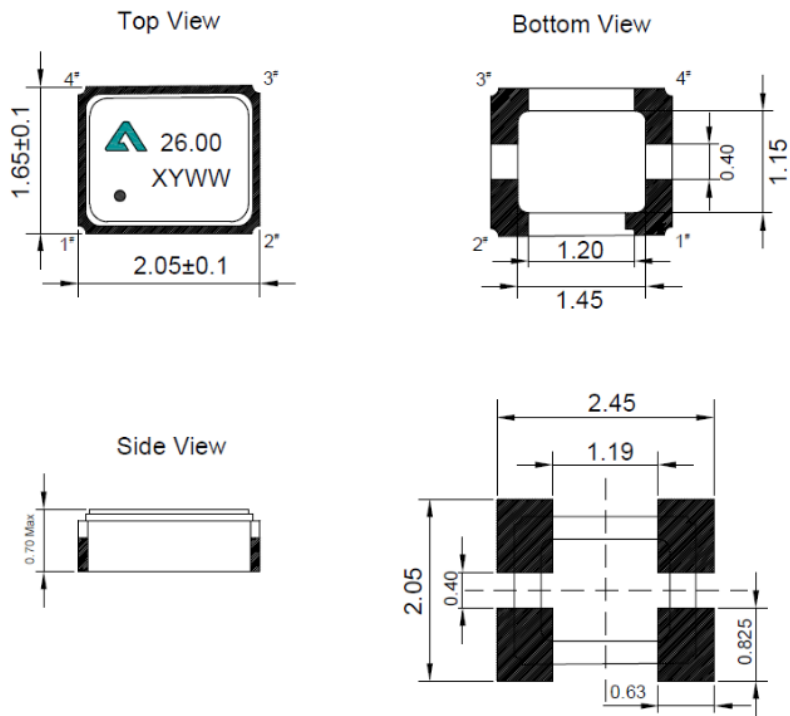
1. Electrical Parameters

| MODEL: T2016G-A5A9-26.00MHz | | | | | | |
|-----------------------------|----------------------------|--|------|------|--------|--|
| Item | Parameters | Specifications | | | | Test Condition |
| | | Min. | Typ. | Max. | Unit | |
| Output | Nominal Frequency | 26 | | | MHz | |
| | Output Waveform | Clipped Sine Wave | | | | |
| | Output Level | 0.8 | | | Vp-p | |
| | Spurious Suppression | | | -8 | dBc | |
| | Output Load | 10KΩ//10pF | | | | |
| Frequency Stabilities | Frequency Tolerance | -1.5 | | 1.5 | ppm | @25±2°C, after 2 times reflow soldering, Ref. to nominal frequency |
| | vs. Temperature | -0.5 | | 0.5 | ppm | T _A = -40°C ~ 85°C, VCC=3.3, Ref. to f = (fmax+fmin)/2 |
| | vs. Supply Voltage | -0.1 | | 0.1 | ppm | VCC = 3.3±5% @ TA=25°C |
| | vs. Load | -0.1 | | 0.1 | ppm | Load = (10KΩ//10pF) ± 10%, VCC=3.3V @ TA=25°C |
| | Aging Tolerance | -1 | | 1 | ppm | @T _A =25°C, Year |
| | Jitter | | | 8.5 | ps | 10Hz-1MHz |
| | Frequency Slope | -0.1 | | 0.1 | ppm/°C | T _A varied from -40°C to 85°C |
| Power Supply | Current consumption | | | 2 | mA | @TA=25°C, VCC=3.3V, Load=10KΩ//10pF. |
| | Start up Time | | | 2 | ms | More than 90% of final output voltage |
| | Supply Voltage | 1.7 | 3.3 | 3.63 | V | |
| SSB Phase Noise | Phase Noise@25±2°C | | | -80 | dBc/Hz | 10Hz |
| | | | | -111 | | 100Hz |
| | | | | -140 | | 1KHz |
| | | | | -151 | | 10KHz |
| | | | | -156 | | 100KHz |
| | | | | -157 | | 1MHz |
| Environmental Conditions | Operable Temperature | -40 | | 85 | °C | |
| | Storage Temperature | -55 | | 105 | °C | |
| | ESD Level | Human Body Model,class2: 3000V; ANSI/ESDA/JEDEC JS-001-2010. | | | | |
| | | Machine Model, class B: 200V; JEDEC JESD22-A115C. | | | | |
| | Moisture Sensitivity Level | Level 1. | | | | |



| | | |
|----------------------|-----------------------|---|
| | Vibration | Test Condition: 0.75mm ;acceleration:10g;10Hz~2000Hz, one cycle per 30 min, test 2 hour. (3 times for each 3 directions X ,Y , Z) .IEC 68-2-06 Test Fc. |
| | Shock | 100g; 6ms; half sine wave (3 times for each 3 directions X ,Y, Z),IEC 68-2-27 Test Ea/Severity 50A. |
| Full Package Storage | Relative humidity (%) | 20% ~ 70% |
| | Temperature (°C) | -10~35°C |

2. Mechanical Structure(mm)



Recommended Land Pattern


| PIN NAME | CONNECTION |
|----------|------------|
| PIN1 | NC |
| PIN2 | GND |
| PIN3 | OUTPUT |
| PIN4 | VCC |

Note1: N/C is not connected

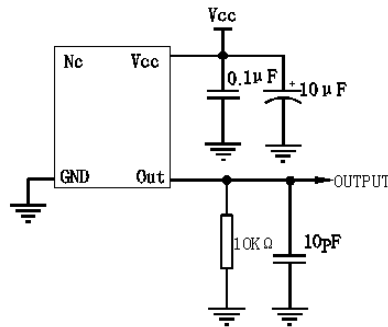


3. Marking Information

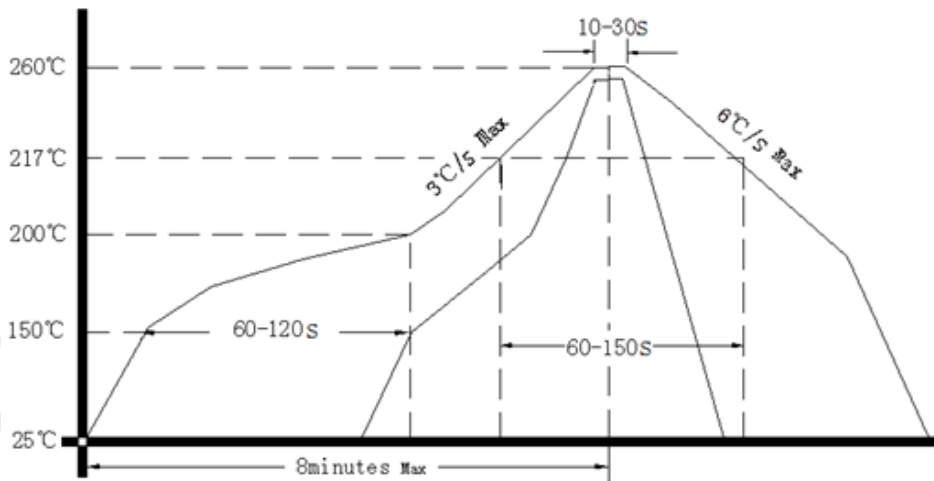
26.00: Frequency 26.00Mhz
▲:DAPU Logo
X: Lot No.
Y: Year
WW: Week
● : Pin1 Index



4. Test Circuit



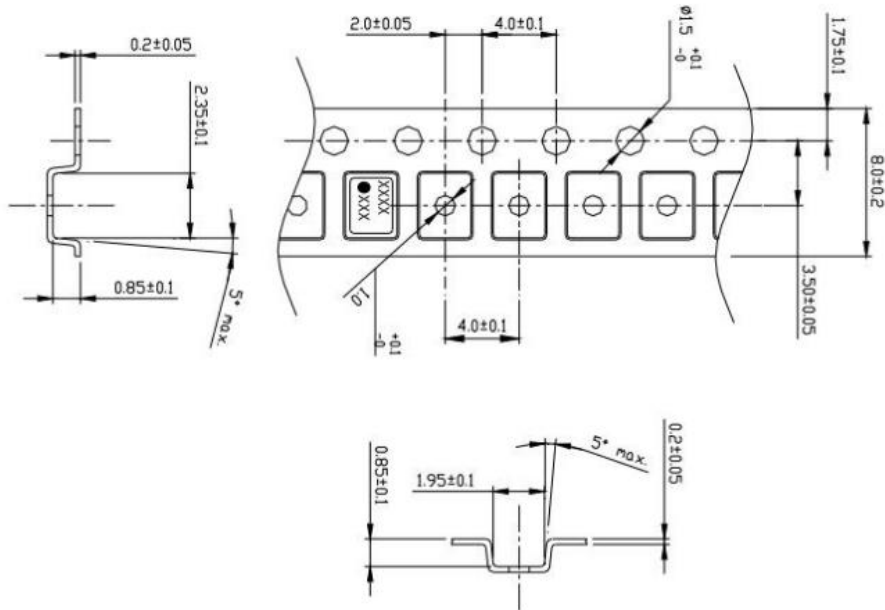
5. Reflow Soldering Curve (RoHS)





6. Packing Information

1) Carrier tape and taping reel sizes (Unit: mm)

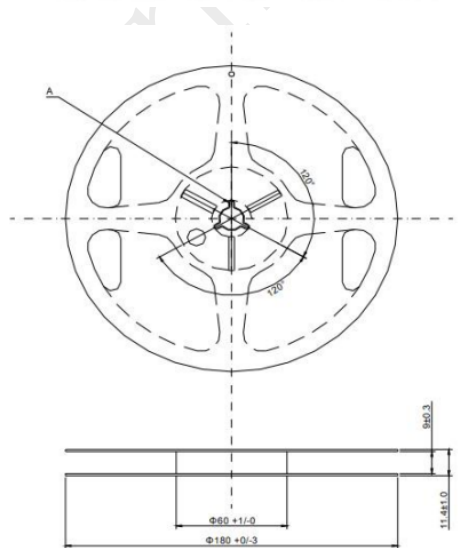


1. Clearance of an embossing tape, and a product unit: mm

| Direction | Pocket size | TCXO size | Clearance |
|-----------|-------------|-----------|-----------|
| L | 2.35±0.10 | 2.00±0.15 | 0.35±0.25 |
| W | 1.95±0.10 | 1.60±0.15 | 0.35±0.25 |
| H | 0.85±0.05 | 0.70±0.10 | 0.15±0.15 |

2. Quality : Polystyrene (Conductivity)

3. Tensile strength of an embossing tape : more than 14N



Material: Polystyrene (Conductivity)
unit:mm

Section A

