

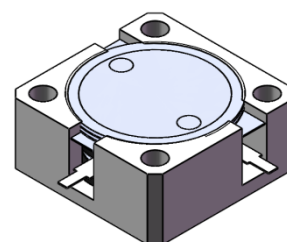


DP2848C

ENG PART:DP-19X19CD-3300T3700-CCW

3300MHz to 3700MHz Single-Junction Drop-in Circulator

| REV. | DESCRIPTION | REVISOR | DATE | APPROVED |
|------|--------------------|---------|-----------|----------|
| 1 | Creating datasheet | ZC.Wu | 2023/9/25 | Nick |

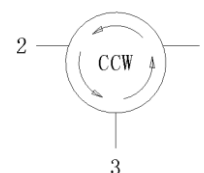


Applications:

- Wireless Infrastructure
- Power Amplifier

Features:

- Operating frequency range:3300MHz to 3700MHz
- Operating temperature range: -40°C to +105°C
- Storage temperature range: -50°C to +135°C
- BeO free & RoHS compliant



Block Diagram



Electrical Specifications:

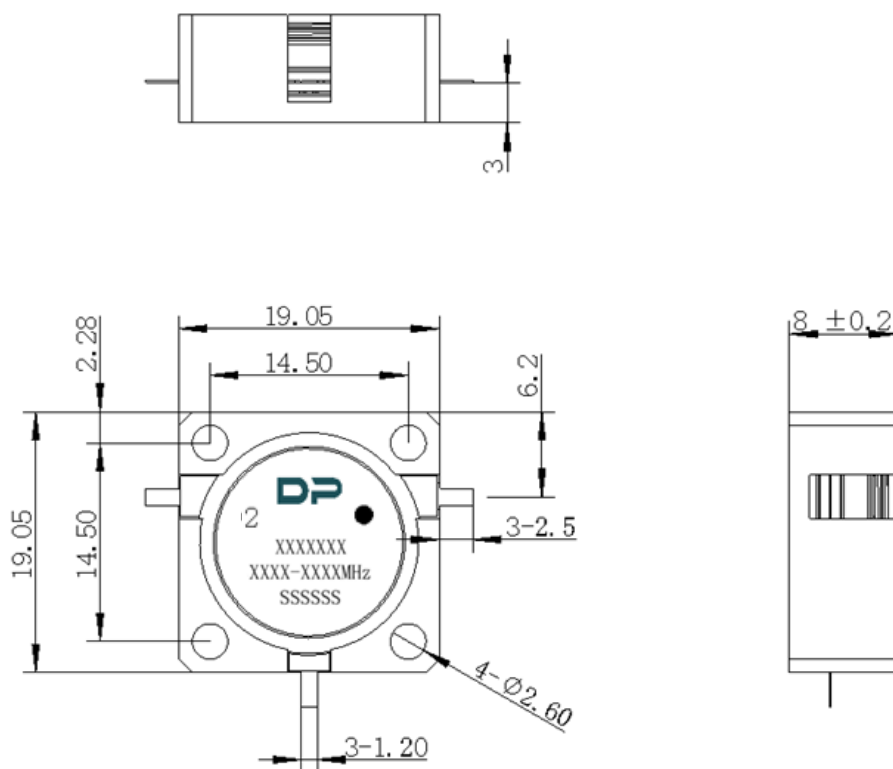
| ITEM | SPECIFICATION | |
|-----------------------|--|------------|
| Frequency | 3300~3700 | MHz |
| Direction | CCW | |
| Impedance | Typ: 50 | Ω |
| Insertion Loss (Max.) | 0.25@25°C \pm 5°C 0.30@-40°C~+105°C | dB |
| Isolation (Min.) | 23.0@25°C \pm 5°C 20.0@-40°C~+105°C | dB |
| Return Loss (Min.) | 23.0@25°C \pm 5°C 20.0@-40°C~+105°C | dB |
| Power FWD/REV/PEAK | 100/100/1000 | W |
| IMD (Max.) | -70@2x41dBm,spacing 5MHz | dBc |
| Impedance ,real | / | Ω |
| Impedance ,imaginary | / | j Ω |

Notes:

1. Exposure to maximum rating conditions for extended periods may reduce device reliability. There is no damage to device with only one parameter set at the limit and all other parameters set at or below their nominal value. Exceeding any of the limits listed here may result in permanent damage to the device.
2. Performance is guaranteed under the conditions listed in this table and over the operating temperature range.



Mechanical Specifications:



Unit: Millimeters

Notes:

1. The circuit is silver-plated.
2. Tolerance ± 0.2 mm unless otherwise specified.
3. Co-planarity Specification: 0.1 mm maximum.
4. Part Number, Lot Code, and Port Designation are printed on the top side of device.
5. The XXXXXX on the label represents the part number
6. The SSSSS on the label represents the serial number
7. The black dot on the label represents the input port