

Customer Code: \_\_\_\_\_

# DATASHEET

DAPU P/N: DPHC15625002

\_\_\_\_\_

DAPU			Customer Approval
Drew	Audited	Approved	Stamp, please! Thanks!
Date: 2023.08.10			

## Guangdong Dapu Telecom Technology Co.,Ltd

Building 5, No.24, Industrial East Road, Songshanhu Park, Dongguan, Guangdong, P.R. China

TEL: 0086-0769-88010888 FAX: 0086-0769-81800098

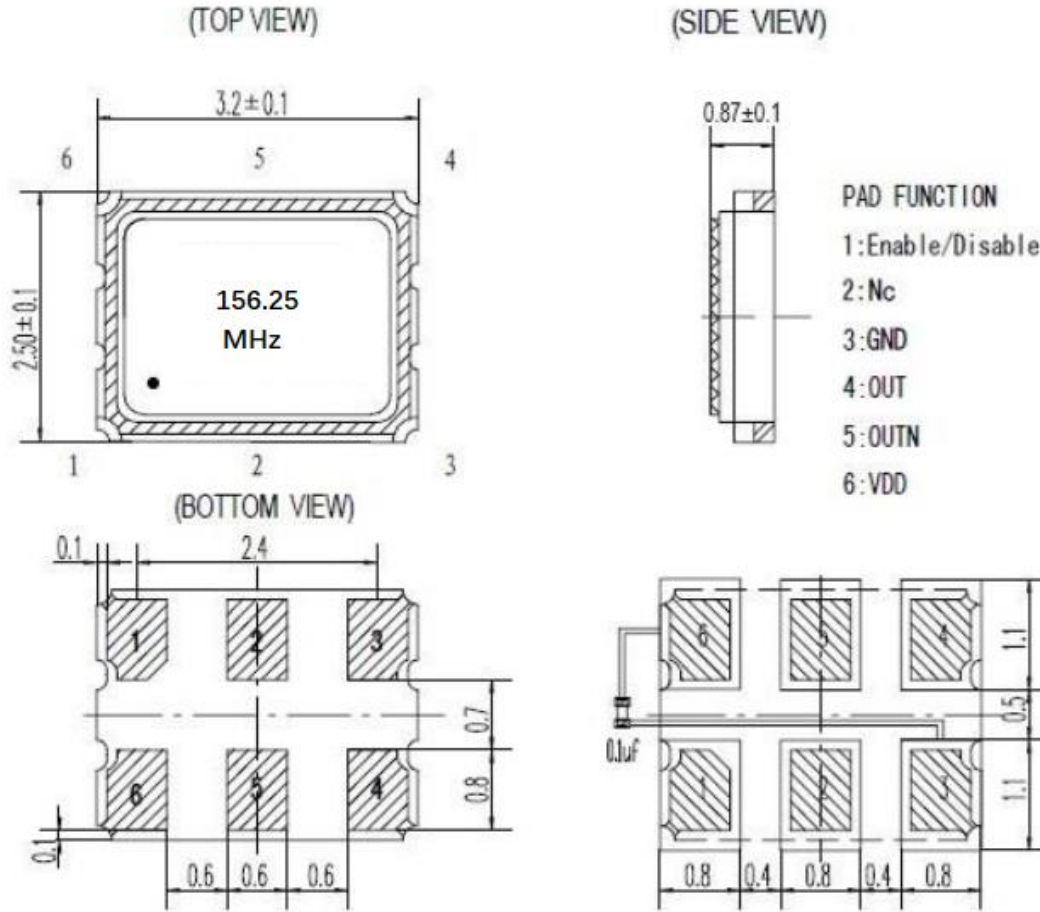


## 1、Electrical Parameters

MODEL: DPHC15625002							
No.	Parameters	SYM	Electrical Spec.				Notes
			Min.	Typ.	Max.	Units	
1	Nominal Frequency	FL	156.25			MHz	
2	Output Waveform		HCSL				
3	Output Load:	CL	50			$\Omega$	
4	Symmetry	-	45		55	%	
5	Frequency Tolerance	FT	-10		+10	$\times 10^{-6}$	
6	Frequency Tolerance vs. Operating Temperature Range	TC	-15		+15	$\times 10^{-6}$	
7	Operating Temperature	Topr	-40		+85	$^{\circ}\text{C}$	
8	Storage Temperature	Tstg	-55	~	+125	$^{\circ}\text{C}$	
9	Supply Voltage	Vcc	2.97	3.3	3.63	V	
10	Supply Current	Icc	-	-	40	mA	
11	Aging First Year		-3		+3	$\times 10^{-6}$	
12	Start up time		-	-	10	ms	
13	Rise/ Fall Time	Tr/Tf	-	-	0.5	ns	20%-80% Vdd Level
14	“H” Output Voltage	VOH	550		850	mV	
15	“l” Output Voltage	VOL	-150	0	150	mV	
16	Output Enable		0.7*Vdd or Floating	-	-	V	Pin 1 Tri-state
17	Output Disable		-	-	0.3*Vdd	V	
18	Jitter RMS			0.07		ps	

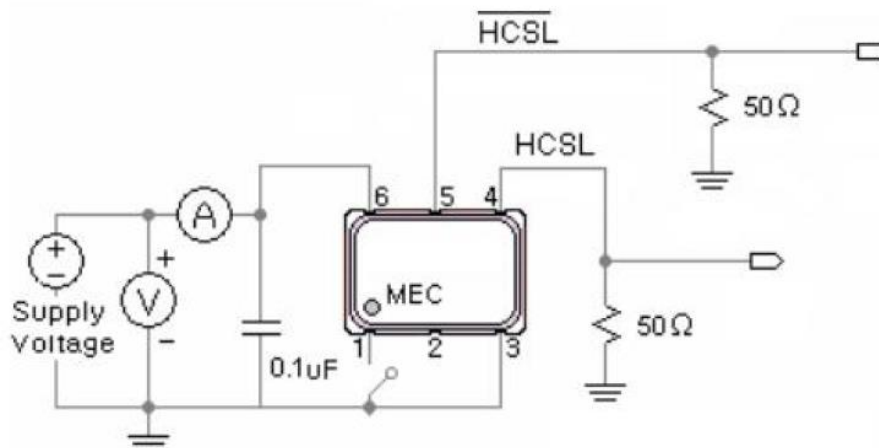


## 2、Mechanical Structure(mm)



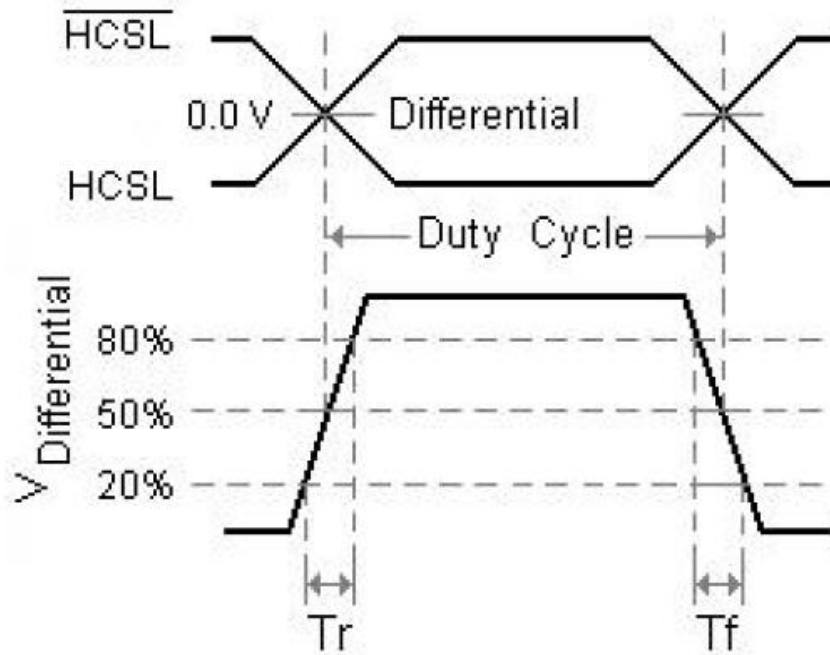
Note1: Tolerance ±0.2mm without mark

## 3、Test Circuit

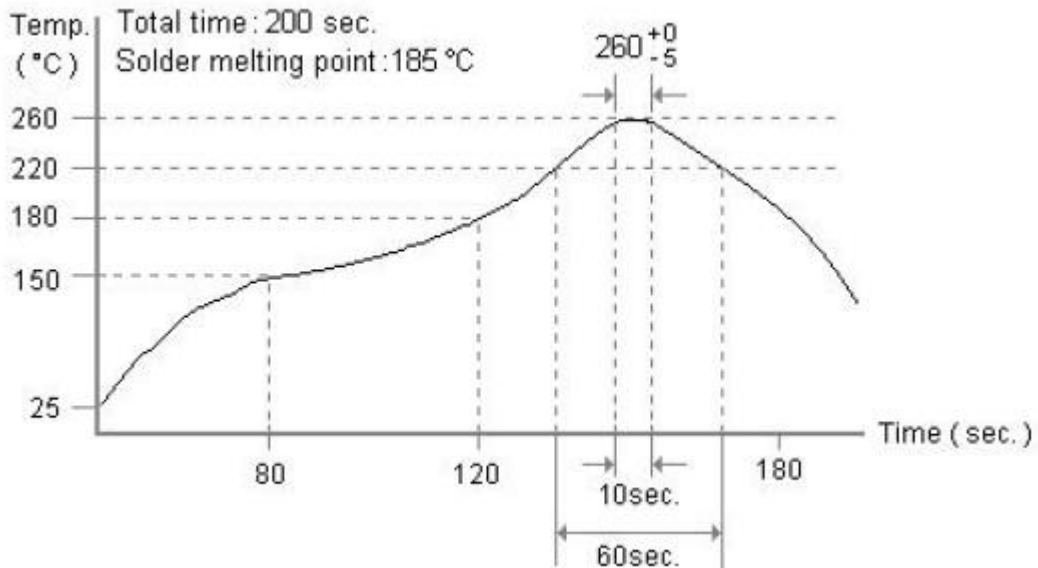




#### 4、 Output Waveform(CMOS Load)



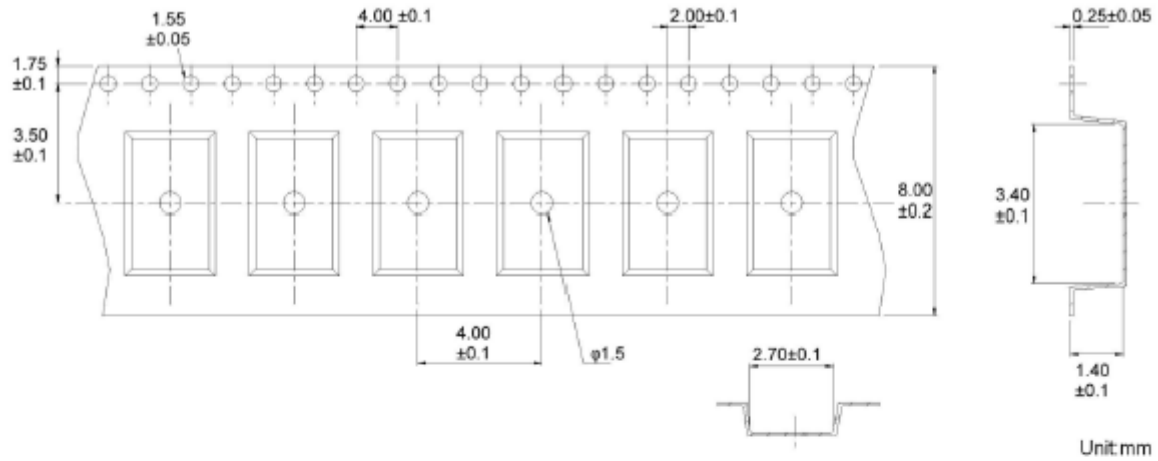
#### 5、 Reflow Soldering Curve (RoHS)



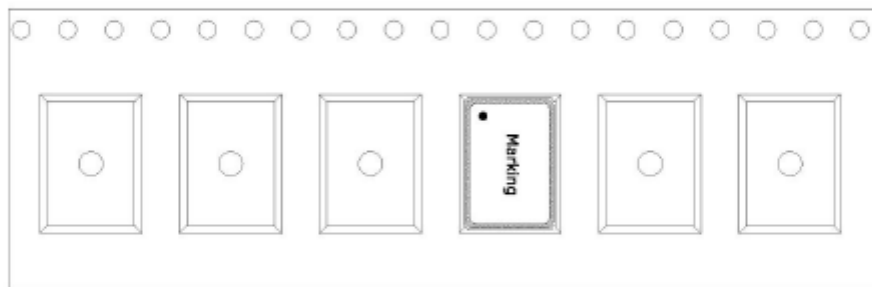


## 6、 Package: Tape & Reel (mm)

### ➤ TAPE (CARRIER) DIMENSIONS



### ➤ THE DIRECTION OF PACKING



### ➤ REEL DIMENSIONS

