

Travelling Merchant: \_\_\_\_\_

# DATASHEET

Standard: T1612-B379-32.768kHz

P/N: \_\_\_\_\_

Plot			The Label
Drew	Audited	Approved	Stamp, please! Thanks!
Date: 2022.05.24			

**Guangdong Dapu Telecom Technology Co.,Ltd**

Building 5, No.24, Industrial East Road, Songshanhu Park, Dongguan, Guangdong, P.R. China

TEL: 0086-0769-88010888 FAX: 0086-0769-81800098



### Table of amendment

Version	Revision contents	Prepared by	Revised date
1.0	The first issued	<i>Amway</i>	2022.05.24

DAPU Confidential



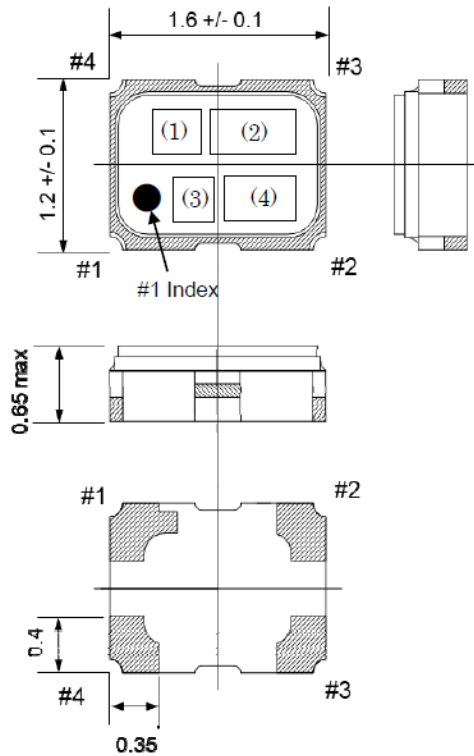
## 1. Electrical Parameters

MODEL: T1612-B379-32.768kHz						
Item	Description	Parameters			Unit	Test Condition
		Min.	Typ.	Max.		
Output	Frequency	32.768			kHz	
	Output Waveform	CMOS				
	0 Level Voltage			10% V <sub>cc</sub>	V	I <sub>OL</sub> = 0.1mA
	1 Level Voltage	90% V <sub>cc</sub>			V	I <sub>OH</sub> = -0.1mA
	Symmetry	40		60	%	50% V <sub>cc</sub> Level
	Start-up Time			0.5	s	90% of steady state frequency reached
	Rise/Fall Time			40	ns	10% to 90% V <sub>cc</sub> Level
	Load	15			pF	
	vs. Temperature Range	-5		+5	× 10 <sup>-6</sup>	T <sub>A</sub> varied from -40°C to 85°C, measurement referenced to frequency observed with T <sub>A</sub> =25°C, V <sub>cc</sub> =1.8V, O <sub>load</sub> =15pF, temperature variable speed less than 2°C per minute.
	Aging Tolerance 1 Year	-5		+5	× 10 <sup>-6</sup>	@25°C
Power Supply	Operating Current		1.1		μA	@25°C ± 2°C, V <sub>cc</sub> =1.8V.No Load, Interval of temperature compensation : 0.5s
	Supply Voltage	1.62	1.8	1.98	V	
Operable Temperature		-40		+85	°C	
Storage Temperature		-40		+85	°C	



## 2. Mechanical Structure(mm)

Outline



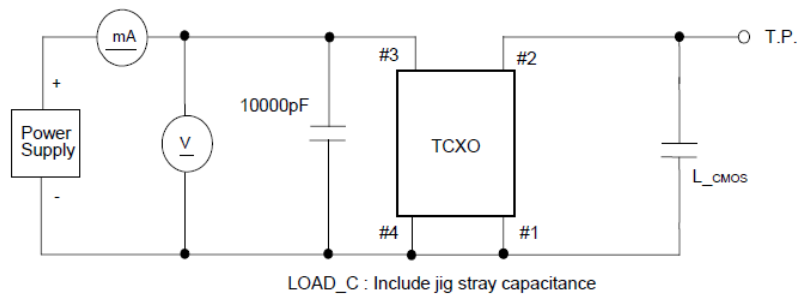
Pin Connections

Pin No.	Connection
#1	GND
#2	Output
#3	V <sub>CC</sub>
#4	GND

Marking  
 Model code TBD  
 Frequency 32 (kHz, 2digits)  
 Logo D  
 Date code Year (1digit) +Week (2digits)  
 e.g.2019/1/1 → 901

t: mm  
 Dimensional Tolerance: ±0.15  
 unless otherwise noted)

## 3. Test Circuit



## 4. Output Waveform

