

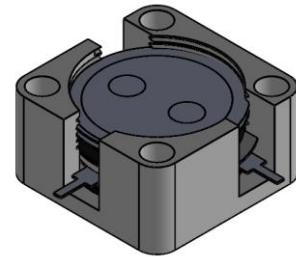


## DP2169C

### ENG PART:DP-12.7X12.7CD-3300T3600-CW

3300MHz to 3600MHz Single-Junction Drop-in Circulator

| REV. | DESCRIPTION        | REVISOR | DATE     | APPROVED |
|------|--------------------|---------|----------|----------|
| 1    | Creating datasheet | ZC.Wu   | 2022/9/2 | Nick     |

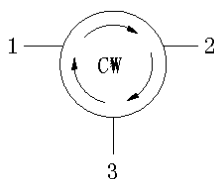


#### Applications:

- Wireless Infrastructure
- Power Amplifier

#### Features:

- Operating frequency range: 3300MHz to 3600MHz
- Operating temperature range: -40°C to +85°C
- Storage temperature range: -55°C to +125°C
- Small surface-mount package delivered on T&R
- BeO free & RoHS compliant



Block Diagram



### Electrical Specifications:

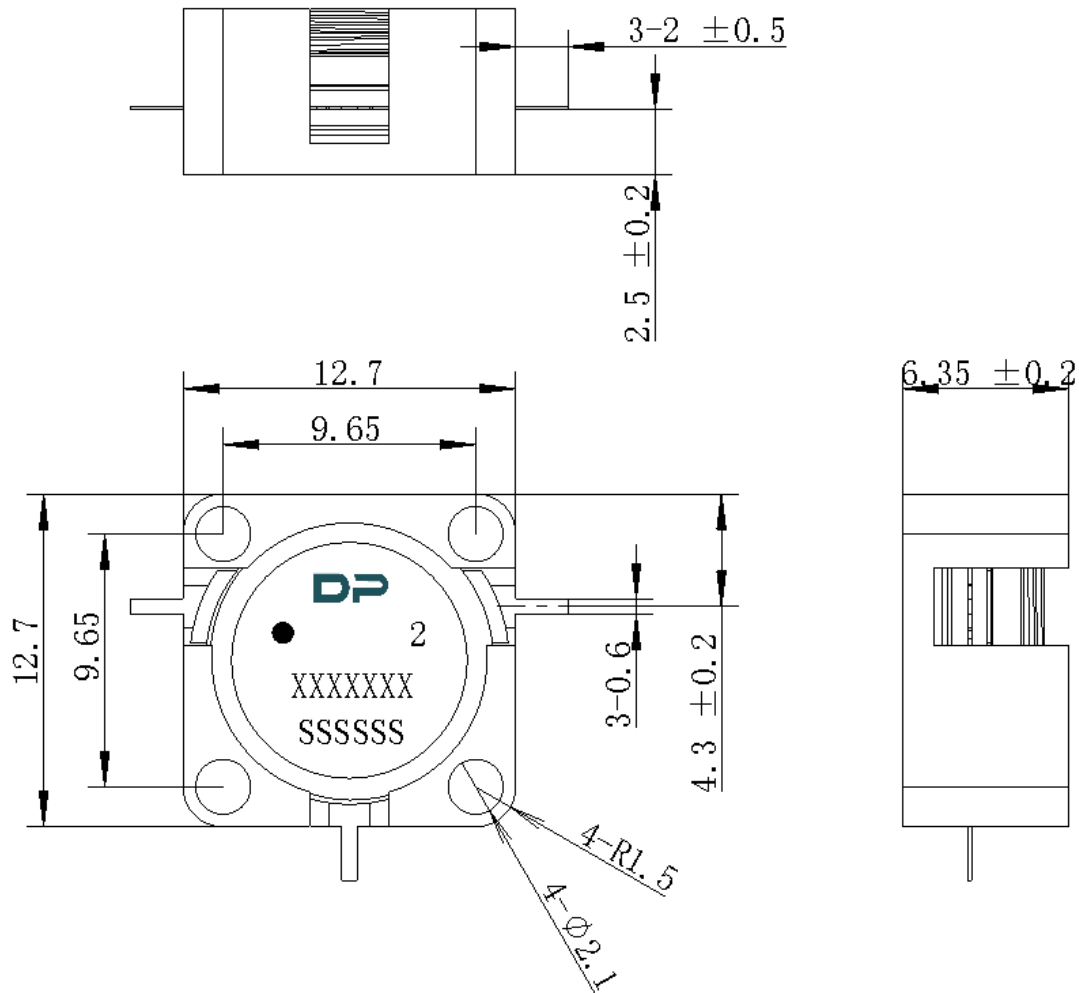
| ITEM                     | SPECIFICATION                           |          |
|--------------------------|---|----------|
| Frequency                | 3300-3600                               | MHz      |
| Direction                | CW                                      |          |
| Impedance                | Typ: 50                                 | $\Omega$ |
| Insertion Loss (Max.)    | 0.35                                    | dB       |
| Isolation (Min.)         | 20                                      | dB       |
| Return Loss (Min.)       | 20                                      | dB       |
| 3rd IMD (Max.)           | -                                       | dBc      |
| 2nd harmonic suppression | -                                       | dBc      |
| 3rd harmonic suppression | -                                       | dBc      |
| Power FWD/REV/PEAK       | 100 (The whole machine validation) /-/- | W        |

Notes:

1. Exposure to maximum rating conditions for extended periods may reduce device reliability. There is no damage to device with only one parameter set at the limit and all other parameters set at or below their nominal value. Exceeding any of the limits listed here may result in permanent damage to the device.
2. Performance is guaranteed under the conditions listed in this table and over the operating temperature range.
3. Performance will not degrade by > 10% (Insertion loss > 20%) with an operating temperature of up to 130 °C.



**Mechanical Specifications:**



Unit: Millimeters

Notes:

1. The housing is nickel plated and the circuit is silver-plated.
2. Tolerance  $\pm 0.2$  mm unless otherwise specified.
3. Co-planarity Specification: 0.1 mm maximum.
4. The XXXXXXX on the label represents the part number
6. The SSSSS on the label represents the serial number
7. The black dot on the label represents the input port