



1.Model DPCF14997001

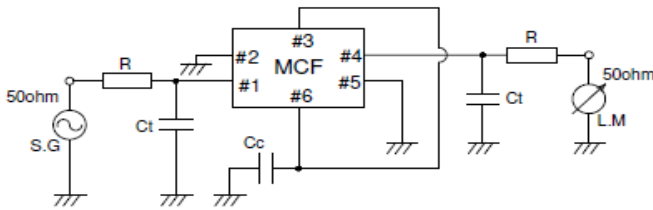
2.Electrical performances

(1)Nominal frequency	149.9725	MHz (3 rd Overtone)
(2)Pass bandwidth	±8.68	kHz min. / 3dB
(3)Stop bandwidth	15	dB min. / f0±30kHz
	35	dB min. / f0±44kHz
	30	dB min. / f0-34.5kHz~-100kHz
	30	dB min. / f0+55kHz~+100kHz
(4)Ripple	1.0	dB max.
(5)Insertion loss	6.0	dB max. / Minimum loss
(6)Spurious	10	dB min.
(7)Maximum inputlevel	-10/0	dBm(working / non-damaged)
(8)Terminating impedance	550	Ω±10%
	-0.3	pF±10%

3.Temperature range

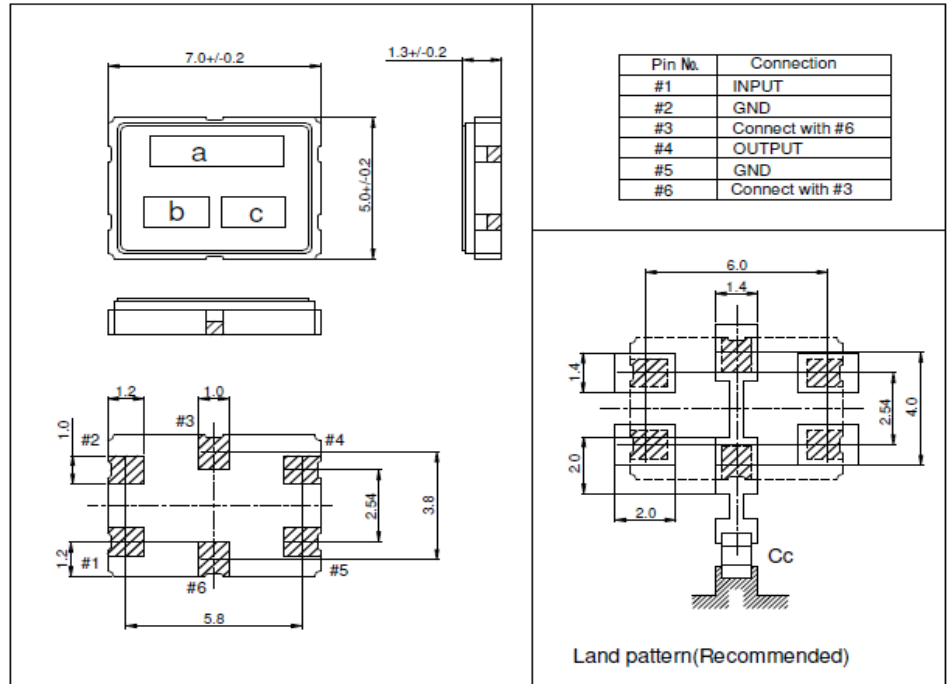
(1)Operating temperature range -40~+85 °C

4.Test circuit



R=500Ω
 Ct=-0.3pF(floating capacity included)
 Cc=1.5pF(floating capacity included)

5 .Dimensions Unit:mm



6 .Marking

- (a)Model
- (b)Logo
- (c)Manufactured year(Y : The last digit of the year) & week (WW : Week of the year)