

Travelling Merchant: \_\_\_\_\_

# DATASHEET

Standard: **T22-B319-26.00MHz-A**

P/N: \_\_\_\_\_

Plot			The Label
Drew	Audited	Approved	Stamp, please! Thanks!
Date: 2022.03.07			

## Guangdong Dapu Telecom Technology Co.,Ltd

Building 5, No.24, Industrial East Road, Songshanhu Park, Dongguan, Guangdong, P.R. China

TEL: 0086-0769-88010888 FAX: 0086-0769-81800098



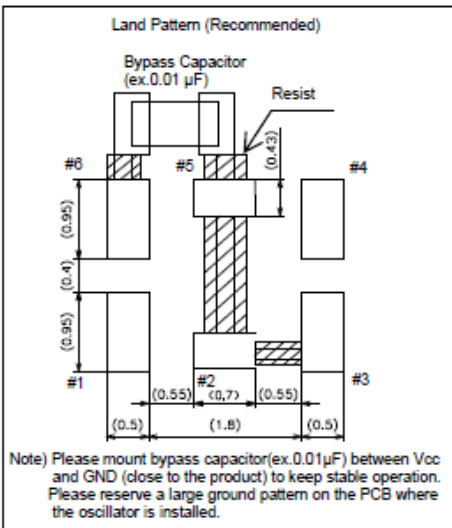
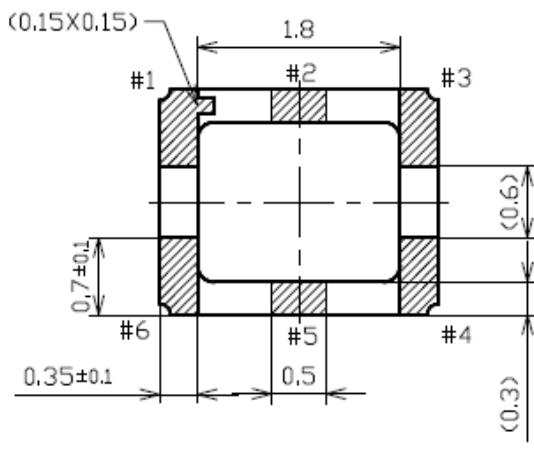
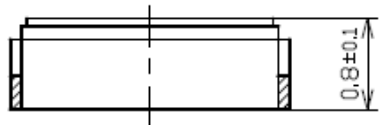
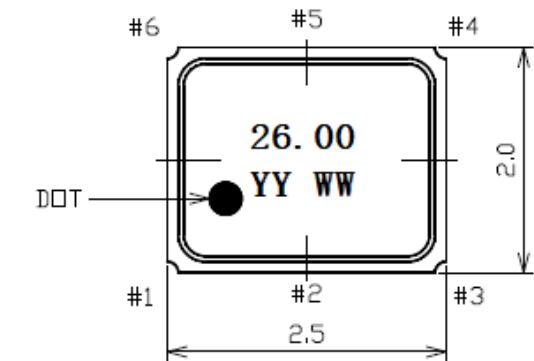


## 1. Electrical Parameters

MODEL: T22-B319-26.00MHz-A						
Item	Description	Parameters			Unit	Test Condition
		Min.	Typ.	Max.		
Output	Frequency	26.00			MHz	
	Output Waveform	CMOS				
	Rise/Fall Time			5	ns	$V_{cc} * 0.2 \sim V_{cc} * 0.8$
	0 Level Output Voltage			0.2V <sub>cc</sub>		
	1 Level Output Voltage	0.8V <sub>cc</sub>				
	Load	15			pF	
Frequency Stabilities	Tolerance	-2		+2	$\times 10^{-6}$	T <sub>A</sub> =25°C, After 2 times reflow, Ref. to nominal frequency, leave after reflow in 2h or more at room ambient.
	Temperature Stability	-5		+5	$\times 10^{-6}$	T <sub>A</sub> = -40°C to 85°C, Ref. to Frequency f <sub>ref</sub> =(f <sub>max</sub> +f <sub>min</sub> )/2.
	Frequency Tolerance vs. Supply Voltage	-0.5		+0.5	$\times 10^{-6}$	Measurement referenced to frequency observed T <sub>A</sub> =25°C, 3.3V ±5% and O <sub>Load</sub> =15pF.
	Frequency Tolerance vs. Load	-0.3		+0.3	$\times 10^{-6}$	15 pF ±10%
	Aging	-1		+1	$\times 10^{-6}$	@25°C, Per year.
Power Supply	Current Consumption			10	mA	@25°C, 3.3V ±5%, O <sub>load</sub> =15pF.
	Supply Voltage	3.135	3.3	3.465	V	
Environmental Conditions	Operable Temperature	-40		+85	°C	
	Storage Temperature	-40		+85	°C	
	ESD Level	Human Body Model, class2: 2000V to 4000V; ANSI/ESDA/JEDEC JS-001-2010.				
		Machine Model, class B: 200V to 400V; JEDEC JESD22-A115C.				
	Moisture Sensitivity Level	Level 2.				
	Vibration	Test Condition: 0.75mm ;acceleration:10g;10Hz~2000Hz, one cycle per 30 min, test 2 hours. (3 times for each 3 directions X , Y , Z) .IEC 68-2-06 Test Fc.				
	Shock	100g; 6ms; half sine wave (3 times for each 3 directions X , Y , Z ),IEC 68-2-27 Test Ea/Severity 50A.				
Full Package Storage	Relative humidity (%)	20% ~70%				
	Temperature (°C)	-10~35°C				



### Mechanical Structure(mm)



Terminal land connections

#1	Stand-by
#3	GND
#4	OUTPUT
#5	V <sub>cc</sub>
#2,#5	N/C or GND

Standby function	
#1 PAD input	#3 PAD output
H level (0.8 V <sub>cc</sub> to V <sub>cc</sub> ) or open	Oscillation output ON
L level (0.2 V <sub>cc</sub> max)	High impedance

Note1: Tolerance ±0.2mm without mark

