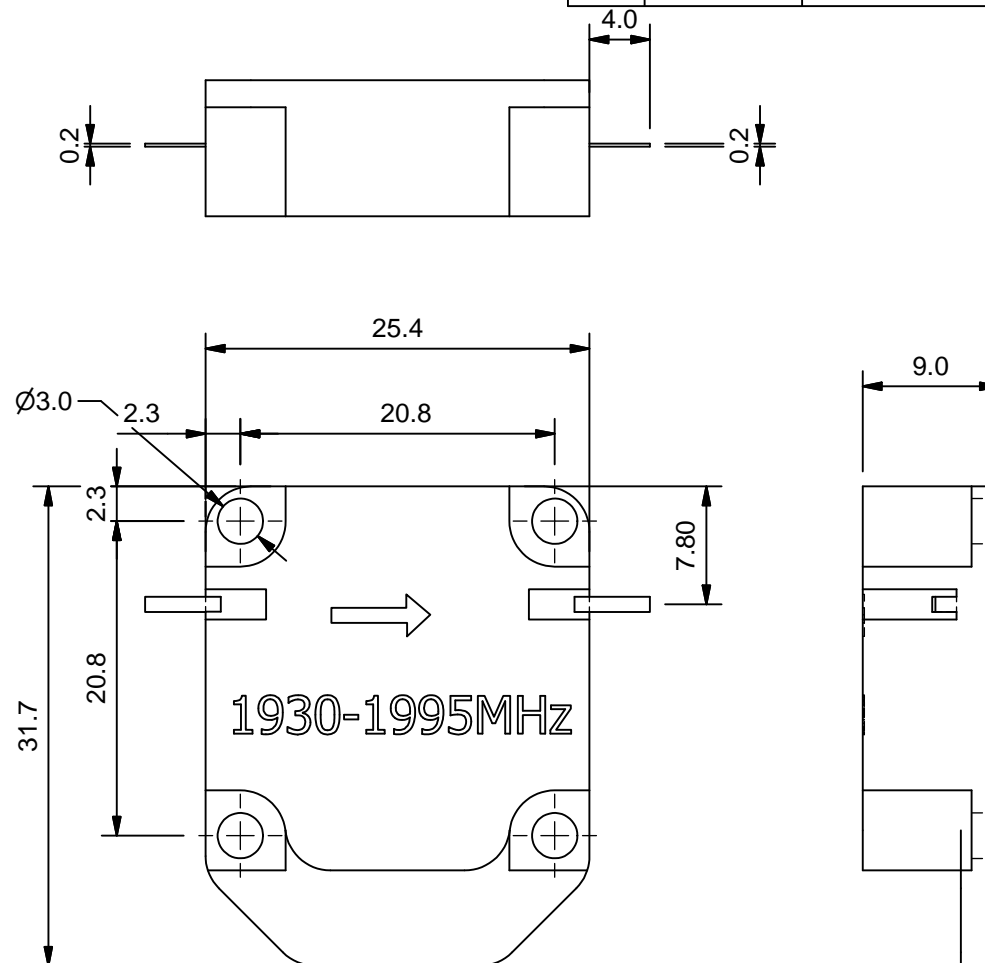


Weight: 0.014 kg
Area: 2570 mm²

REVISION				
REV	ECN	DESCRIPTION	DATE	APP
A0		INITIAL ISSUE	2021-06-03	jimmy



项目	单位	指标	
工作频率	MHz	1930-1995	
工作温度	℃	-40~+90	
传输方向		顺时针	
插入损耗	dB max	0.25	Room Temp (+25℃±5)
	dB max	0.30	Over Temp (-40℃~+90℃)
隔离度	dB min	28	Room Temp (+25℃±5)
	dB min	25	Over Temp (-40℃~+90℃)
回波损耗	dB min	28@P1	Room Temp (+25℃±5)
	dB min	25@P1	Over Temp (-40℃~+90℃)
	dB min	25@P2	Over Temp (-40℃~+90℃)
带内波动	dB max	1880-2060MHz通带每60MHz为0.6, 整个通带为0.6	
正向功率	W	150	(P1-P2)
峰值功率	W	800	(P1-P2) 0.01% duty cycle
负载功率	W	150	测试1分钟
开路功率	W	90	测试1分钟
失配负载功率	W	45	测试1分钟
前向三阶互调	80dBc min. @ 6 tones, 39dBm per tone OR 70dBc min. @ 2 tones, 49dBm per tone		
反向三阶互调	-89.5dBc		
端口阻抗	Ω	50	

技术说明:
1.中心导体: 镀银
2.满足ROHS要求
3.未注公差±0.2

ORIGINATOR:	MECHANICAL:	ELECTRICAL:	APPR_BY:
Jimmy 2021/6/3	hanson 2021/6/3	zard 2021/6/3	jack 2021/6/3

TOLERANCES (UNLESS SPECIFIED)
0. = ±0.20
.0 = ±0.10
.00 = ±0.05
.000 = ±0.02
.0000 = ±0.01
ANGLE = ±1/2 DEGREES
ROUGHNESS Ra1.6
(UNLESS SPECIFIED)

TITLE: PF1117221 1900隔离器
MATERIAL: FINISH:
PIVOTONE
Pivotone Communication Technologies, Inc.

ERP No.:	11F11172218000A0
DRAWING No.:	F1117221_800
PROJECT No.:	PF1117221
SIZE:	A4
UNIT:	MM
SCALE:	1:1
REV:	A0
SHEET:	1 / 1