

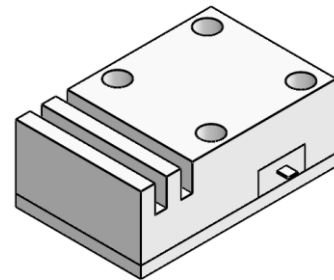


## DP0734S

### ENG PART: DP-16X25 ID-5900T6700-CCW

5900MHz to 6700MHz Single-Junction Drop-in Isolator

REV.	DESCRIPTION	REVISOR	DATE	APPROVED
A	Creating datasheet	ZC.Wu	2021/11/4	Nick

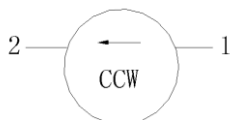


#### Applications:

- Wireless Infrastructure
- Power Amplifier

#### Features:

- Operating frequency range: 5900MHz to 6700MHz
- Operating temperature range: -40°C to +70°C
- Storage temperature range: -40°C to +85°C
- Small surface-mount package delivered on T&R
- BeOfree&RoHS compliant



Block Diagram



### Electrical Specifications:

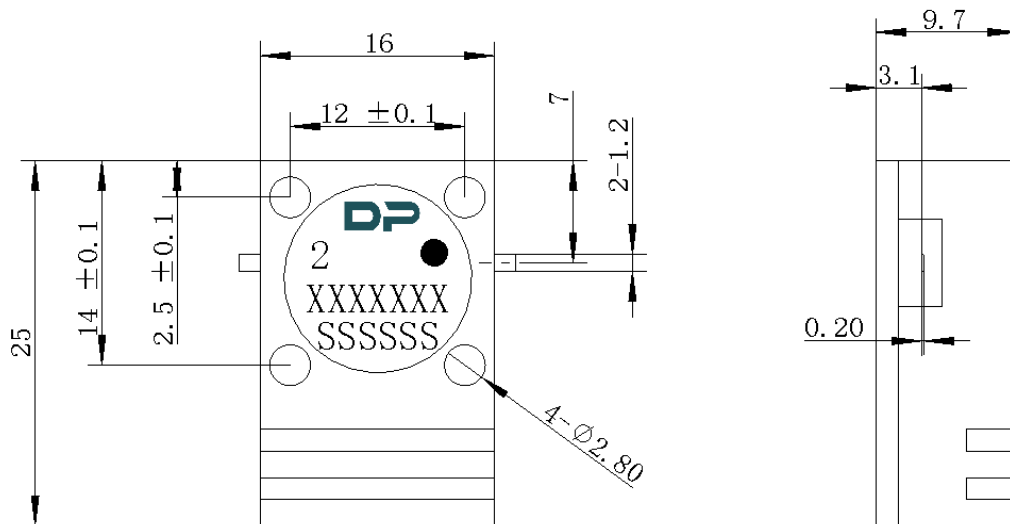
ITEM	SPECIFICATION	
Frequency	5900~6700	MHz
Extend frequency	-	MHz
Direction	CCW	
Impedance	Typ: 50	$\Omega$
Insertion Loss (Max.)	0.3@25°C $\pm$ 5°C 0.4@-40°C~+70°C	dB
Isolation (Min.)	23@25°C $\pm$ 5°C 21@-40°C~+70°C	dB
Return Loss (Min.)	20@25°C $\pm$ 5°C 17.7@-40°C~+70°C	dB
3rd IMD (Max.)	/	dBc
Group delay	2/	ns
Resonance point of out-off-band	/	MHz
2nd harmonic suppression	/	dBc
3rd harmonic suppression	/	dBc
Power FWD/REV/PEAK	100/100/-	W
Termination/Attenuator	150/-	W/dB
Input Impedance ,real	/	$\Omega$
Input Impedance ,imaginary	/	$\Omega$

Notes:

1. Exposure to maximum rating conditions for extended periods may reduce device reliability. There is no damage to device with only one parameter set at the limit and all other parameters set at or below their nominal value. Exceeding any of the limits listed here may result in permanent damage to the device.
2. Performance is guaranteed under the conditions listed in this table and over the operating temperature range.



### 3. Mechanical Specifications:



Unit: Millimeters

#### Notes:

1. The circuit is silver-plated.
2. Tolerance  $\pm 0.2$  mm unless otherwise specified.
3. Co-planarity Specification: 0.1 mm maximum.
4. Part Number, Lot Code, and Port Designation are printed on the top side of device.
5. Part Number format shall be XXXXXXX
6. Serial Number format shall be SSSSSS
7. The black dot on the label represents the input port