

## Test Report

No. CANEC2115775101

Date: 30 Aug 2021

Page 1 of 10

GUANGDONG DAPU TELECOM TECHNOLOGY CO.,LTD

ROOM 401 & 402, BUILDING 5, NO.24, GONGYE EAST ROAD, SONGSHAN LAKE PARK, DONGGUAN CITY, GUANGDONG PROVINCE

The following sample(s) was/were submitted and identified on behalf of the clients as : Crystal oscillator

SGS Job No. : CP21-045849 - SZ

Model No. : T75B-1806-19.20MHz

Client Ref. Info. : Please see remark

Date of Sample Received : 24 Aug 2021

Testing Period : 24 Aug 2021 - 30 Aug 2021

Test Requested : Selected test(s) as requested by client.

Test Method : Please refer to next page(s).

Test Results : Please refer to next page(s).

Conclusion : Based on the performed tests on submitted sample(s), the results of Lead, Mercury, Cadmium, Hexavalent chromium, Polybrominated biphenyls (PBBs), Polybrominated diphenyl ethers (PBDEs) and Phthalates such as Bis(2-ethylhexyl) phthalate (DEHP) , Butyl benzyl phthalate (BBP), Dibutyl phthalate (DBP) , and Diisobutyl phthalate (DIBP) comply with the limits as set by RoHS Directive (EU) 2015/863 amending Annex II to Directive 2011/65/EU.

Signed for and on behalf of  
SGS-CSTC Standards Technical Services Co., Ltd. Guangzhou Branch

Allie Chen

Allie Chen  
Approved Signatory

scan to see the report



CANEC2115775101



SGS-CSTC Standards Technical Services Co., Ltd.  
Guangzhou Branch Testing Center Chemical Laboratory.

Unless otherwise agreed in writing, this document is issued by the Company subject to its General Conditions of Service printed overleaf, available on request or accessible at <http://www.sgs.com/en/Terms-and-Conditions.aspx> and, for electronic format documents, subject to Terms and Conditions for Electronic Documents at <http://www.sgs.com/en/Terms-and-Conditions/Terms-e-Documents.aspx>. Attention is drawn to the limitation of liability, indemnification and jurisdiction issues defined therein. Any holder of this document is advised that information contained hereon reflects the Company's findings at the time of its intervention only and within the limits of Client's instructions, if any. The Company's sole responsibility is to its Client and this document does not exonerate parties to a transaction from exercising all their rights and obligations under the transaction documents. This document cannot be reproduced except in full, without prior written approval of the Company. Any unauthorized alteration, forgery or falsification of the content or appearance of this document is unlawful and offenders may be prosecuted to the fullest extent of the law. Unless otherwise stated the results shown in this test report refer only to the sample(s) tested.

Attention: To check the authenticity of testing / inspection report & certificate, please contact us at telephone: (86-755) 8307 1443, or email: [CN.Doccheck@sgs.com](mailto:CN.Doccheck@sgs.com)

198 Kazhu Road, Sciencetech Park Guangzhou Economic & Technology Development District, Guangzhou, China 510663

中国·广州·经济技术开发区科学城科珠路198号 邮编: 510663

t (86-20) 82155555 [www.sgs.com](http://www.sgs.com)

t (86-20) 82155555 [sgs.china@sgs.com](mailto:sgs.china@sgs.com)

## Test Report

No. CANEC2115775101

Date: 30 Aug 2021

Page 2 of 10

Test Results :

### Test Part Description :

Specimen No.	SGS Sample ID	Description
SN1	CAN21-157751.001	"Crystal oscillator"

Remarks :

- (1) 1 mg/kg = 1 ppm = 0.0001%
- (2) MDL = Method Detection Limit
- (3) ND = Not Detected ( < MDL )
- (4) "-" = Not Regulated

### RoHS Directive (EU) 2015/863 amending Annex II to Directive 2011/65/EU

Test Method : With reference to IEC 62321-4:2013+A1:2017, IEC 62321-5:2013, IEC 62321-7-2:2017 , IEC 62321-6:2015 and IEC 62321-8:2017, analyzed by ICP-OES , UV-Vis and GC-MS .

Test Item(s)	Limit	Unit	MDL	001
Cadmium (Cd)	100	mg/kg	2	ND
Lead (Pb)	1,000	mg/kg	2	11
Mercury (Hg)	1,000	mg/kg	2	ND
Hexavalent Chromium (CrVI)	1,000	mg/kg	8	ND
Sum of PBBs	1,000	mg/kg	-	ND
Monobromobiphenyl	-	mg/kg	5	ND
Dibromobiphenyl	-	mg/kg	5	ND
Tribromobiphenyl	-	mg/kg	5	ND
Tetrabromobiphenyl	-	mg/kg	5	ND
Pentabromobiphenyl	-	mg/kg	5	ND
Hexabromobiphenyl	-	mg/kg	5	ND
Heptabromobiphenyl	-	mg/kg	5	ND
Octabromobiphenyl	-	mg/kg	5	ND
Nonabromobiphenyl	-	mg/kg	5	ND
Decabromobiphenyl	-	mg/kg	5	ND
Sum of PBDEs	1,000	mg/kg	-	ND
Monobromodiphenyl ether	-	mg/kg	5	ND
Dibromodiphenyl ether	-	mg/kg	5	ND
Tribromodiphenyl ether	-	mg/kg	5	ND
Tetrabromodiphenyl ether	-	mg/kg	5	ND
Pentabromodiphenyl ether	-	mg/kg	5	ND



Unless otherwise agreed in writing, this document is issued by the Company subject to its General Conditions of Service printed overleaf, available on request or accessible at <http://www.sgs.com/en/Terms-and-Conditions.aspx> and, for electronic format documents, subject to Terms and Conditions for Electronic Documents at <http://www.sgs.com/en/Terms-and-Conditions/Terms-e-Document.aspx>. Attention is drawn to the limitation of liability, indemnification and jurisdiction issues defined therein. Any holder of this document is advised that information contained hereon reflects the Company's findings at the time of its intervention only and within the limits of Client's instructions, if any. The Company's sole responsibility is to its Client and this document does not exonerate parties to a transaction from exercising all their rights and obligations under the transaction documents. This document cannot be reproduced except in full, without prior written approval of the Company. Any unauthorized alteration, forgery or falsification of the content or appearance of this document is unlawful and offenders may be prosecuted to the fullest extent of the law. Unless otherwise stated the results shown in this test report refer only to the sample(s) tested.

Attention: To check the authenticity of testing / inspection report & certificate, please contact us at telephone: (86-755) 8307 1443, or email: [CN.Doccheck@sgs.com](mailto:CN.Doccheck@sgs.com)

## Test Report

No. CANEC2115775101

Date: 30 Aug 2021

Page 3 of 10

<u>Test Item(s)</u>	<u>Limit</u>	<u>Unit</u>	<u>MDL</u>	<u>001</u>
Hexabromodiphenyl ether	-	mg/kg	5	ND
Heptabromodiphenyl ether	-	mg/kg	5	ND
Octabromodiphenyl ether	-	mg/kg	5	ND
Nonabromodiphenyl ether	-	mg/kg	5	ND
Decabromodiphenyl ether	-	mg/kg	5	ND
Dibutyl phthalate (DBP)	1,000	mg/kg	50	ND
Butyl benzyl phthalate (BBP)	1,000	mg/kg	50	ND
Bis (2-ethylhexyl) phthalate (DEHP)	1,000	mg/kg	50	ND
Diisobutyl Phthalates (DIBP)	1,000	mg/kg	50	ND

### Notes :

- (1) The maximum permissible limit is quoted from RoHS Directive (EU) 2015/863.
- (2) IEC 62321 series is equivalent to EN 62321 series  
[https://www.cenelec.eu/dyn/www/f?p=104:30:1742232870351101:::FSP\\_ORG\\_ID,FSP\\_LANG\\_ID:1258637,25](https://www.cenelec.eu/dyn/www/f?p=104:30:1742232870351101:::FSP_ORG_ID,FSP_LANG_ID:1258637,25)
- (3) The restriction of DEHP, BBP, DBP and DIBP shall apply to medical devices, including in vitro medical devices, and monitoring and control instruments, including industrial monitoring and control instruments, from 22 July 2021.



Unless otherwise agreed in writing, this document is issued by the Company subject to its General Conditions of Service printed overleaf, available on request or accessible at <http://www.sgs.com/en/Terms-and-Conditions.aspx> and, for electronic format documents, subject to Terms and Conditions for Electronic Documents at <http://www.sgs.com/en/Terms-and-Conditions/Terms-e-Documents.aspx>. Attention is drawn to the limitation of liability, indemnification and jurisdiction issues defined therein. Any holder of this document is advised that information contained hereon reflects the Company's findings at the time of its intervention only and within the limits of Client's instructions, if any. The Company's sole responsibility is to its Client and this document does not exonerate parties to a transaction from exercising all their rights and obligations under the transaction documents. This document cannot be reproduced except in full, without prior written approval of the Company. Any unauthorized alteration, forgery or falsification of the content or appearance of this document is unlawful and offenders may be prosecuted to the fullest extent of the law. Unless otherwise stated the results shown in this test report refer only to the sample(s) tested.

Attention: To check the authenticity of testing / inspection report & certificate, please contact us at telephone: (86-755) 8307 1443, or email: [CN.Doccheck@sgs.com](mailto:CN.Doccheck@sgs.com)

Remark:

T10A-DCBN-24.00MHz、T10A-G429-27.00MHz、T11A-0801-19.44MHz、  
 T11A-G319-25.00MHz、T11A-G319-19.44MHz-A、T11A-0801-32.768MHz、  
 T11A-0801-12.80MHz、T11A-G319-25.00MHz-KH、T11A-G319-20.00MHz、  
 T11A-0803-10.00MHz、T11A-G319-16.384MHz-A、T11A-APFFCDN-8.192MHz-A、  
 T11A-A319-2.048MHz、T11A-H319-65.537MHz、T11A-H329-10.00MHz、  
 T11A-APFFCDN-8.192MHz、T11A-H329-102.40MHz-A、T11A-F319-10.00MHz、  
 T11A-ACAN-34.368MHz、T11A-F329-10.00MHz、T11A-G319-56.00MHz、  
 T11A-TCAN-20.00MHz、T11A-ACAN-65.537MHz-A、T11A-MCAN-19.44MHz、  
 T11A-ACBN-56.00MHz、T11A-E319-12.288MHz、T11A-I429-10.00MHz、  
 T11A-J813-56.00MHz、T11A-JCAN-16.384MHz、T11A-Q326-21.00MHz、  
 T11A-H329-102.40MHz-C、T11A-G419-40.00MHz、T11A-G326-10.00MHz、  
 T11A-H329-102.40MHz-B、T11A-BABFSNN-6.40MHz、T11A-H319-125.00MHz、  
 T11A-Q319-128.00MHz、T11A-AAFCNN-10.00MHz、T11A-B426-100.00MHz、  
 T11A-O419-36.864MHz、T11A-J319-65.537MHz、T11A-A319-100.00MHz、  
 T11A-F421-27.12MHz、T11A-F313-10.00MHz、T11E-G429-63.00MHz、  
 JT11A-ACAN-34.368MHz、JT11A-MCAN-19.44MHz、T12A-F429-40.00MHz、  
 T12A-F426-100.00MHz-B、T12A-F429-100.00MHz、T12A-F419-40.00MHz、  
 T12A-F426-100.00MHz、T12A-F426-100.00MHz-A、T12A-F429-100.00MHz-A、  
 T12A-F429-100.00MHz-B、T12A-F419-80.00MHz、T21-1801-26.00MHz、  
 T21-S581-26.00MHz、T21-K579-26.00MHz、T21-O579-26.00MHz、  
 T21-P579-26.00MHz-N、T21-P579-26.00MHz、T21-A573-32.00MHz、  
 T21-F569-32.00MHz、T21-S573-26.00MHz、T21-S579-38.40MHz、  
 T21-S589-10.00MHz、T22-S539-26.00MHz、T32-S589-10.00MHz、  
 T32-O519-32.00MHz、T22-S573-19.20MHz、T22-B581-26.00MHz、  
 T22S-P413-50.00MHz、T23B-D329-20.00MHz、T32-R513-26.00MHz-SA、  
 T32-S519-20.00MHz、T32-Q519-40.00MHz-A、T32-B513-10.00MHz-A、  
 T32-B513-20.00MHz-A、T32-B513-10.00MHz-Y、T32-B519-20.00MHz-Y、  
 T32-S511-40.00MHz、T32-B513-19.20MHz-A、T32-B519-10.00MHz-Y、  
 T32-B519-20.00MHz-A、T32-F513-16.384MHz、T32-B519-40.00MHz-A、  
 T32-1801-20.00MHz、T32-B519-10.00MHz-A、T32-B513-2.80MHz-A、  
 T32-B513-20.00MHz、T32-B519-10.00MHz、T32-Q519-26.00MHz、T32-F519-40.00MHz-A、  
 T32-F519-25.00MHz、T32-S513-30.72MHz、T32-P519-16.00MHz、T32-O519-10.00MHz、  
 T32-B513-19.20MHz、T32-B519-40.00MHz、T32-S519-18.432MHz、T32-S513-19.20MHz、  
 T32-S519-30.72MHz、T32-G519-20.00MHz、T32-B513-40.00MHz、T32-F512-20.00MHz、  
 T32-H569-12.80MHz、T32-T513-24.00MHz、T32-R513-25.00MHz、T32-S571-40.00MHz、  
 T32-B519-20.00MHz、T32-B519-19.20MHz-A、T32-F519-38.40MHz、T32-Q513-12.00MHz-A、  
 T32-Q519-10.00MHz、T32-F516-19.20MHz、T32-S519-32.768MHz、T32-B519-50.00MHz、  
 T32-M513-30.72MHz、T53-Z311-19.20MHz、T53-F569-12.80MHz、T53-V319-20.00MHz、  
 T53-Y316-10.00MHz-B、T53-F586-38.40MHz-A、T53-A513-19.20MHz、  
 T53-Y318-25.00MHz-A、T53-I517-16.00MHz、T53-Y311-19.20MHz、T53-H319-25.00MHz、  
 T53-Y316-10.00MHz-A、T53-F512-26.00MHz-A、T53-F316-48.00MHz、  
 T53-G319-50.00MHz-B、T53-Y513-10.00MHz、T53-F313-30.72MHz、T53-F313-19.20MHz、  
 T53-F313-10.00MHz-A、T53-G319-20.48MHz、T53-B313-20.00MHz、T53-Y319-40.00MHz-B、  
 T53-H319-12.00MHz、T53-M513-19.20MHz、T53-S519-20.00MHz、T53-1801-48.0048MHz、  
 T53-Y313-26.00MHz、T53-F319-10.00MHz、T53-S519-10.00MHz、T53-S513-10.00MHz、  
 T53-G513-25.00MHz、T53-A319-54.00MHz、T53-K518-50.00MHz-A、T53-G313-40.00MHz、



Unless otherwise agreed in writing, this document is issued by the Company subject to its General Conditions of Service printed overleaf, available on request or accessible at <http://www.sgs.com/en/Terms-and-Conditions.aspx> and, for electronic format documents, subject to Terms and Conditions for Electronic Documents at <http://www.sgs.com/en/Terms-and-Conditions/Terms-e-Documents.aspx>. Attention is drawn to the limitation of liability, indemnification and jurisdiction issues defined therein. Any holder of this document is advised that information contained hereon reflects the Company's findings at the time of its intervention only and within the limits of Client's instructions, if any. The Company's sole responsibility is to its Client and this document does not exonerate parties to a transaction from exercising all their rights and obligations under the transaction documents. This document cannot be reproduced in full, without prior written approval of the Company. Any unauthorized alteration, forgery or falsification of the content or appearance of this document is unlawful and offenders may be prosecuted to the fullest extent of the law. Unless otherwise stated the results shown in this test report refer only to the sample(s) tested.

T53-EQAD-16.32MHz、T53-Y519-10.00MHz、T53-E563-12.80MHz、T53-F513-10.00MHz、  
 T53-F513-52.00MHz、T53-Z313-40.00MHz-A、T53-G313-30.72MHz、T53-Y313-24.00MHz、  
 T53-S319-10.00MHz、T53-S519-19.20MHz、T53-Y311-20.00MHz、T53-G513-24.576MHz-K、  
 T53-O513-40.00MHz-A、T53-Y313-50.00MHz、T53-Y516-16.32MHz、T53-O318-25.00MHz、  
 T53-B513-19.20MHz、T53-B316-48.00MHz、T53-S313-20.00MHz、T53-S319-12.80MHz、  
 T53-S319-19.20MHz、T53-F311-26.00MHz、T53-S313-10.00MHz、T53-F513-20.00MHz-A、  
 T53-F513-50.00MHz、T53-G519-20.00MHz、T53-Y513-40.00MHz、T53-G519-24.576MHz、  
 T53-P319-20.00MHz、T53-Y518-26.00MHz、T53-F586-38.40MHz、T53-F519-40.00MHz、  
 T53-1201-20.00MHz、T53-Y313-10.00MHz-B、T53-W513-10.00MHz、T53-G519-25.00MHz、  
 T53-F513-16.384MHz、T53-W383-24.00MHz、T53-F519-19.20MHz、T53-Y318-25.00MHz、  
 T53-Y319-10.00MHz、T53-F319-16.384MHz、T53-Y319-25.00MHz、T53-H519-12.00MHz-A、  
 T53-Y313-38.88MHz、T53-Y513-10.00MHz-A、T53-F311-19.20MHz、T53-Q513-25.00MHz、  
 T53-Y311-19.20MHz-A、T53-B319-38.88MHz-A、T53-F313-19.20MHz-A、  
 T53-Y319-19.20MHz-A、T53-Y319-20.00MHz-AT53-Y319-12.80MHz-RN、T53-U319-50.00MHz、  
 T53-Y319-40.00MHz-K、T53-1801-38.88MHz、T53-G313-16.384MHz、T53-Y313-19.20MHz、  
 T53-Y313-30.72MHz、T53-Y313-30.72MHz-A、T53-F319-20.00MHz、T53-Q313-26.00MHz、  
 T53-G313-20.00MHz、JT53-W311-10.00MHz、JT53-G313-30.72MHz、JT53-Y311-20.00MHz、  
 T75-ACXFCE-20.00MHz、T75-ACNPCN-12.80MHz、T75A-J319-20.00MHz、  
 T75A-0801-19.44MHz、T75A-F119-20.00MHz、T75A-F513-10.00MHz、T75A-Y319-10.00MHz、  
 T75A-1801-38.88MHz、T75A-RCAN-20.00MHz、T75A-T319-12.80MHz、T75A-U319-19.44MHz、  
 T75A-F321-18.432MHz、T75A-C819-12.80MHz、T75A-K319-38.88MHz-A、  
 T75A-F319-12.80MHz、T75A-H319-25.00MHz-A、T75A-C313-16.384MHz、  
 T75A-0802-19.44MHz、T75A-S313-20.00MHz、T75A-ECAN-12.80MHz、T75A-1801-20.00MHz、  
 T75A-D319-10.00MHz、T75A-H119-40.00MHz、T75A-H319-50.00MHz、T75A-F319-20.00MHz、  
 T75A-1101-38.88MHz、T75A-F513-20.00MHz、T75A-T319-24.576MHz、  
 T75A-T319-24.576MHz-K、T75A-F319-10.00MHz、T75A-T319-12.80MHz-C、  
 T75A-G319-50.00MHz、T75A-F317-10.00MHz、T75A-H319-40.00MHz-A、  
 T75A-K319-19.44MHz、T75A-F319-25.00MHz-A、T75A-K513-10.00MHz、T75A-F311-10.00MHz、  
 T75B-H529-10.00MHz、T75B-0801-19.20MHz、T75B-W319-20.00MHz-A、T75B-0802-40.00MHz、  
 T75B-G318-10.00MHz、T75B-G119-30.72MHz、T75B-E312-12.80MHz、  
 T75B-CCAN-11.0592MHz、T75B-F313-30.72MHz、T75B-G319-30.72MHz、T75B-L319-30.72MHz、  
 T75B-P319-38.40MHz、T75B-F319-10.00MHz、T75B-0802-20.00MHz、T75B-F319-30.72MHz-A、  
 T75B-1102-19.20MHz、T75B-W312-20.00MHz、T75B-F319-48.00MHz、T75B-U319-20.00MHz、  
 T75B-JCAN-30.72MHz、T75B-O319-20.00MHz、T75B-E318-20.00MHz-A、T75B-Z319-10.00MHz、  
 T75B-F313-10.00MHz、T75B-G519-40.00MHz、T75B-1806-19.20MHz、T75B-F812-10.00MHz、  
 T75B-F311-8.192MHz、T75B-S319-50.00MHz、T75B-N319-20.00MHz、T75B-G319-50.00MHz、  
 T75B-P311-50.00MHz、T75B-KCAN-32.768MHz、T75B-S319-25.00MHz、  
 T75B-ACAFCN-12.80MHz、T75B-F319-15.36MHz、T75B-K311-50.00MHz、T75B-2101-30.72MHz、  
 T75B-M319-30.00MHz、T75B-M319-100.00MHz、T75B-C819-12.80MHz、T75B-F519-10.00MHz、  
 T75B-N812-19.20MHz、T75B-F316-48.00MHz、T75B-F519-30.72MHz、T75B-K313-25.00MHz、  
 T75B-J319-12.80MHz、T75B-B561-26.00MHz、T75B-M324-16.384MHz、T75B-G319-25.00MHz、  
 T75B-G319-16.00MHz、T75B-G313-10.00MHz-B、T75B-G312-55.40MHz、T75B-G529-20.00MHz、  
 T75B-FCAD-20.00MHz、T75B-CCBN-10.00MHz、T75B-V311-28.80MHz-A、T75B-C319-20.00MHz、  
 T75B-D319-62.00MHz、T75B-L313-30.72MHz、T75B-W312-10.00MHz、T75B-C313-20.00MHz-C、  
 T75B-A513-10.00MHz、T75B-F319-20.00MHz-A-YBT、T75B-1802-50.00MHz、  
 T75B-F519-25.00MHz-A、T75B-J313-25.00MHz、T75B-G319-25.00MHz-B、  
 T75B-F319-40.00MHz-B、T75B-O519-25.00MHz、T75B-G819-100.00MHz、T75B-E313-10.00MHz、  
 T75B-0803-20.00MHz、T75B-S313-40.00MHz、T75B-C319-19.20MHz-B、T75B-C319-10.00MHz-B、  
 T75B-C319-20.00MHz-B、T75B-C313-19.20MHz-B、T75B-C313-20.00MHz-B、



Unless otherwise agreed in writing, this document is issued by the Company subject to its General Conditions of Service printed overleaf, available on request or accessible at <http://www.sgs.com/en/Terms-and-Conditions.aspx> and, for electronic format documents, subject to Terms and Conditions for Electronic Documents at <http://www.sgs.com/en/Terms-and-Conditions/Terms-e-Documents.aspx>. Attention is drawn to the limitation of liability, indemnification and jurisdiction issues defined therein. Any holder of this document is advised that information contained hereon reflects the Company's findings at the time of its intervention only and within the limits of Client's instructions, if any. The Company's sole responsibility is to its Client and this document does not exonerate parties to a transaction from exercising all their rights and obligations under the transaction documents. This document cannot be reproduced in full, without prior written approval of the Company. Any unauthorized alteration, forgery or falsification of the content or appearance of this document is unlawful and offenders may be prosecuted to the fullest extent of the law. Unless otherwise stated the results shown in this test report refer only to the sample(s) tested.

T75B-H819-80.00MHz、T75B-C519-10.00MHz-B、T75B-C519-20.00MHz-B、T75B-P312-10.00MHz、  
 T75B-F319-40.00MHz、T75B-U319-30.00MHz、T75B-M319-80.00MHz、T75B-CCAN-40.00MHz、  
 T75B-J319-20.00MHz、T75B-G311-16.384MHz、T75B-G319-32.768MHz、T75B-H819-12.00MHz、  
 T75B-0802-19.20MHz、T75B-G511-50.00MHz、T75B-F519-40.00MHz-B、T75B-F319-30.72MHz、  
 T75B-J313-40.00MHz、T75B-C319-10.00MHz-A、T75B-P319-20.00MHz-B、T75B-M319-28.00MHz、  
 T75B-P313-19.20MHz、T75B-N319-15.36MHz、T75B-K812-10.00MHz、T75B-H319-100.00MHz、  
 T75B-X319-20.00MHz、T75B-F319-50.00MHz、T75B-F119-10.00MHz、T75B-B329-25.00MHz、  
 T75B-C119-10.00MHz、T75B-F313-32.64MHz、T75B-F319-32.768MHz、T75B-T313-30.72MHz、  
 T75B-FCAN-50.00MHz、T75B-1807-19.20MHz、T75B-P311-10.00MHz、T75B-F819-25.00MHz、  
 T75B-B319-24.00MHz、T75B-D319-12.80MHz、T75B-F313-20.00MHz、T75B-CCAN-20.00MHz、  
 T75B-G319-26.00MHz、T75B-G319-50.00MHz-A、T75B-GCAD-32.768MHz、  
 T75B-FCAN-100.00MHz、T75B-G319-50.00MHz-B、T75B-F319-40.00MHz-A、  
 T75B-M319-10.00MHz、T75B-K313-30.72MHz、T75B-F519-40.00MHz-C、T75B-G511-20.00MHz、  
 T75B-V311-28.80MHz-B、T75B-B319-19.20MHz、T75B-K819-24.00MHz、T75B-K319-25.00MHz、  
 T75B-G319-40.00MHz-A、T75B-P313-26.00MHz-A、T75B-T319-40.00MHz、T75B-Y313-10.00MHz、  
 T75B-H319-40.00MHz-A、T75B-FCAN-25.00MHz、T75B-G312-51.30MHz、T75B-P319-16.384MHz、  
 T75B-G313-10.00MHz-A、T75B-K319-25.00MHz-B、T75B-AD319-10.00MHz、T75B-F319-34.368MHz、  
 T75B-M317-19.20MHz、T75B-V311-28.80MHz、T75B-M317-20.00MHz、T75B-P319-30.72MHz-A、  
 T75B-Q311-33.3333MHz、T75B-C313-10.00MHz-B、T75B-G313-125.00MHz、  
 T75B-P319-40.00MHz-A、T75B-A313-28.80MHz、T75B-G319-40.00MHz、T75B-B317-19.20MHz、  
 T75B-M319-19.20MHz、T75B-B317-38.88MHz、T75B-B319-38.88MHz、T75B-M319-38.88MHz、  
 T75B-K317-10.00MHz、T75B-B317-20.00MHz、T75B-K317-19.20MHz、T75B-M317-38.88MHz、  
 T75B-K317-20.00MHz、T75B-A513-28.80MHz、T75B-K317-38.88MHz、T75B-S319-12.80MHz-S、  
 T75B-K319-10.00MHz、T75B-H319-25.00MHz、T75B-K319-19.20MHz、T75B-M317-10.00MHz、  
 T75B-K319-20.00MHz-B、T75B-F311-28.80MHz、T75B-P319-20.00MHz、T75B-B319-10.00MHz、  
 T75B-K319-20.00MHz-C、T75B-M319-20.00MHz、T75B-B317-10.00MHz、T75B-B319-20.00MHz、  
 T75B-K319-38.88MHz、T75B-Y319-10.00MHz-A、T75B-Q313-26.00MHz-K、T75B-H313-16.32MHz、  
 T75B-A311-16.384MHz、T75B-G319-16.384MHz、T75B-P313-19.20MHz-A、T75B-A513-19.20MHz、  
 T75B-V319-20.00MHz、T75B-HCAN-100.00MHz、T75B-Y319-10.00MHz、T75B-S319-20.00MHz、  
 T75B-G319-20.00MHz-A、T75B-G319-10.00MHz-A、T75B-G513-10.00MHz、  
 T75B-N313-38.40MHz-LWD、T75B-Y313-10.00MHz-A、T75B-H313-100.00MHz、  
 T75D-BCAD-10.00MHz、T75D-BCAD-20.00MHz、T75G-AQAD-10.00MHz、JT75B-KCAN-32.768MHz、  
 JT75B-F319-48.00MHz、T936-F314-115.20MHz、T936-F426-20.00MHz、T936-E412-100.00MHz、  
 T936-P429-100.00MHz、T936-E312-100.00MHz-LWD、T936-E319-100.00MHz、T936-L319-12.00MHz、  
 T936-G119-30.72MHz、T936-P419-100.00MHz-K、T936-G419-50.00MHz、T936-F314-102.40MHz、  
 T936-P313-10.00MHz、T936-G429-10.00MHz、V10A-K313-77.76MHz、V754-A312-61.44MHz、  
 V754-B812-61.44MHz、V756-A311-50.00MHz、V756-A311-30.72MHz、V936-J001-56.00MHz、  
 V936-J001-100.00MHz、VC936B-AEAD-61.44MHz、M11A-H313-38.88MHz、M11A-MCAD-10.00MHz、  
 M11A-R319-25.00MHz、M11A-BCAC-38.88MHz、M11A-X329-32.768MHz、M11A-KCBD-10.00MHz、  
 M11A-L329-40.00MHz、M11A-LCAN-24.576MHz、M11A-AAAF CNN-61.44MHz、M11A-G319-10.00MHz、  
 M11A-O319-35.00MHz、M11A-KSBD-10.00MHz、M11A-FSBD-16.384MHz、M11A-L419-80.00MHz、  
 M11A-K424-9.60MHz、M11A-KCBD-20.00MHz、M11A-LSAD-25.00MHz、M11A-BAFF CNN-32.768MHz、  
 M11A-AAAF CNN-40.96MHz、M11A-I825-10.00MHz、M11A-ACBN-40.96MHz、M11A-Q329-10.00MHz、  
 M11A-ASBD-25.00MHz、M11A-M425-20.00MHz、M11A-K819-10.00MHz、M11A-F411-25.00MHz、  
 M11A-L444-32.512MHz、M11A-MSAN-35.00MHz、M11A-MSBD-16.384MHz、M11A-MSAN-40.00MHz、  
 M11A-AAAF CNN-40.00MHz、M11A-J329-50.00MHz、M11A-K819-20.00MHz、M11A-ACAN-20.00MHz、  
 M11A-X425-20.00MHz、M11A-F329-32.768MHz、M11A-D311-120.00MHz、M11A-P329-10.00MHz、  
 M11A-L319-40.00MHz、M11A-L426-40.00MHz、M11A-H413-25.60MHz、M11B-J119-9.60MHz、  
 M11F-P426-100.00MHz、M11F-G419-100.00MHz、M11F-K412-92.16MHz、M11F-G319-82.6432MHz、



Unless otherwise agreed in writing, this document is issued by the Company subject to its General Conditions of Service printed overleaf, available on request or accessible at <http://www.sgs.com/en/Terms-and-Conditions.aspx> and, for electronic format documents, subject to Terms and Conditions for Electronic Documents at <http://www.sgs.com/en/Terms-and-Conditions/Terms-e-Document.aspx>. Attention is drawn to the limitation of liability, indemnification and jurisdiction issues defined therein. Any holder of this document is advised that information contained hereon reflects the Company's findings at the time of its intervention only and within the limits of Client's instructions, if any. The Company's sole responsibility is to its Client and this document does not exonerate parties to a transaction from exercising all their rights and obligations under the transaction documents. This document cannot be reproduced except in full, without prior written approval of the Company. Any unauthorized alteration, forgery or falsification of the content or appearance of this document is unlawful and offenders may be prosecuted to the fullest extent of the law. Unless otherwise stated the results shown in this test report refer only to the sample(s) tested.

Attention: To check the authenticity of testing / inspection report & certificate, please contact us at telephone: (86-755) 8307 1443, or email: [CN.Doccheck@sgs.com](mailto:CN.Doccheck@sgs.com)

M11F-G329-75.00MHz、M11F-B429-100.00MHz、JM11A-ACAN-20.00MHz、  
JM11A-AAAFcNN-61.44MHz、JM11A-X329-32.768MHz、JM11A-BAFFcNN-32.768MHz、  
JM11A-T419-40.00MHz、M21B-ESBN-65.00MHz、M21B-BADFSen-16.256MHz、  
M21B-BTAFsNN-80.00MHz、M21D-BSAN-9.60MHz、M75A-P313-10.00MHz-A、  
M75A-H319-40.00MHz、M75A-H319-50.00MHz、M75A-S313-30.72MHz、M75B-H319-10.00MHz、  
M75B-I513-10.00MHz-A、M75B-G313-10.00MHz、M75B-G313-10.00MHz-I、M75B-H313-50.00MHz、  
M75B-H319-28.80MHz、M75B-G313-20.00MHz-B、M75B-G313-12.80MHz、M75B-J319-40.00MHz-A、  
M75B-G313-19.20MHz、M75B-P319-50.00MHz、M75B-J413-50.00MHz、M75B-R313-10.00MHz、  
JM75B-K311-10.00MHz、JM75A-K319-40.00MHz、M936-2602-10.00MHz、M936-K319-10.00MHz、  
M936-I313-38.40MHz、M936-K411-26.00MHz、M936-J319-100.00MHz、M936-N429-100.00MHz、  
M936-N417-10.00MHz、M936-D319-20.00MHz-A、M936-G419-40.00MHz



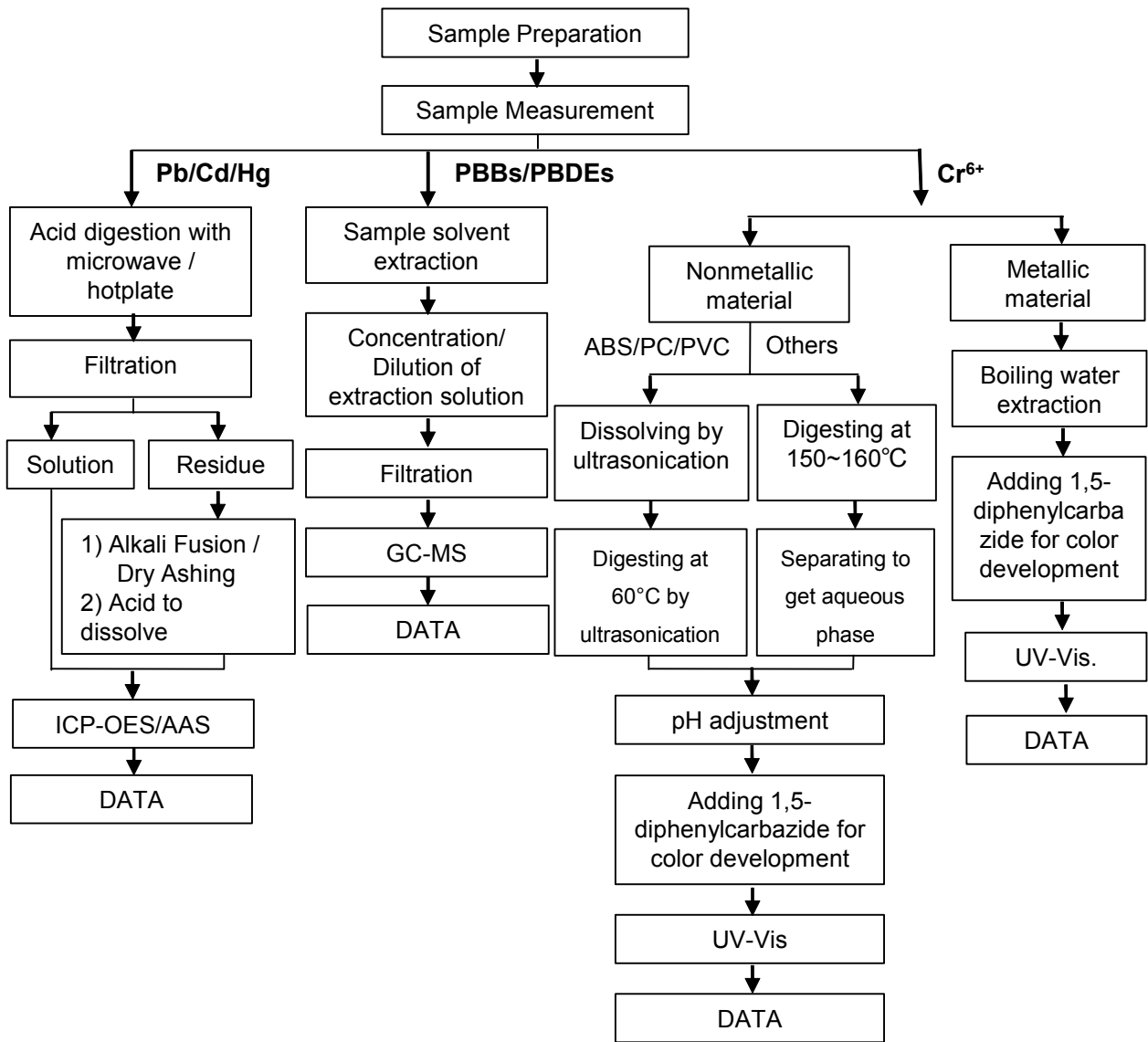
Unless otherwise agreed in writing, this document is issued by the Company subject to its General Conditions of Service printed overleaf, available on request or accessible at <http://www.sgs.com/en/Terms-and-Conditions.aspx> and, for electronic format documents, subject to Terms and Conditions for Electronic Documents at <http://www.sgs.com/en/Terms-and-Conditions/Terms-e-Documents.aspx>. Attention is drawn to the limitation of liability, indemnification and jurisdiction issues defined therein. Any holder of this document is advised that information contained hereon reflects the Company's findings at the time of its intervention only and within the limits of Client's instructions, if any. The Company's sole responsibility is to its Client and this document does not exonerate parties to a transaction from exercising all their rights and obligations under the transaction documents. This document cannot be reproduced except in full, without prior written approval of the Company. Any unauthorized alteration, forgery or falsification of the content or appearance of this document is unlawful and offenders may be prosecuted to the fullest extent of the law. Unless otherwise stated the results shown in this test report refer only to the sample(s) tested.

Attention: To check the authenticity of testing / inspection report & certificate, please contact us at telephone: (86-755) 8307 1443, or email: [CN.Doccheck@sgs.com](mailto:CN.Doccheck@sgs.com)

ATTACHMENTS

**Pb/Cd/Hg/Cr<sup>6+</sup>/PBBs/PBDEs Testing Flow Chart**

1) These samples were dissolved totally by pre-conditioning method according to below flow chart. (Cr<sup>6+</sup> and PBBs/PBDEs test method excluded).



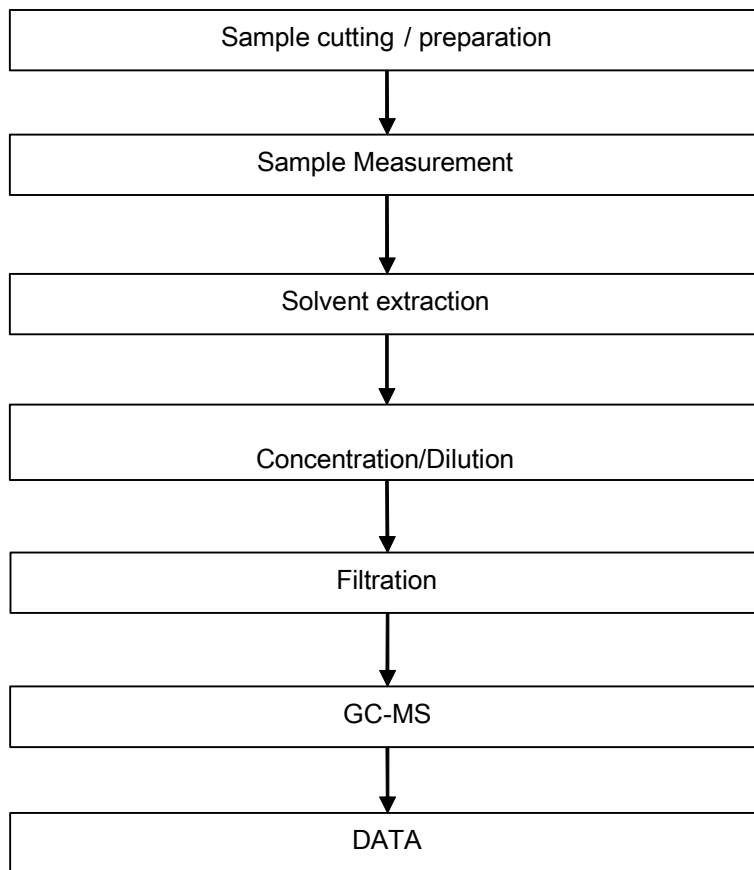
Unless otherwise agreed in writing, this document is issued by the Company subject to its General Conditions of Service printed overleaf, available on request or accessible at <http://www.sgs.com/en/Terms-and-Conditions.aspx> and, for electronic format documents, subject to Terms and Conditions for Electronic Documents at <http://www.sgs.com/en/Terms-and-Conditions/Terms-e-Documents.aspx>. Attention is drawn to the limitation of liability, indemnification and jurisdiction issues defined therein. Any holder of this document is advised that information contained hereon reflects the Company's findings at the time of its intervention only and within the limits of Client's instructions, if any. The Company's sole responsibility is to its Client and this document does not exonerate parties to a transaction from exercising all their rights and obligations under the transaction documents. This document cannot be reproduced except in full, without prior written approval of the Company. Any unauthorized alteration, forgery or falsification of the content or appearance of this document is unlawful and offenders may be prosecuted to the fullest extent of the law. Unless otherwise stated the results shown in this test report refer only to the sample(s) tested.

Attention: To check the authenticity of testing / inspection report & certificate, please contact us at telephone: (86-755) 8307 1443, or email: [CN.Doccheck@sgs.com](mailto:CN.Doccheck@sgs.com)  
 198 Kezhu Road, Sciencetech Park Guangzhou Economic & Technology Development District, Guangzhou, China 510663 t (86-20) 82155555 www.sgs.com.cn  
 中国·广州·经济技术开发区科学城科珠路198号 邮编: 510663 t (86-20) 82155555 sgs.china@sgs.com



## ATTACHMENTS

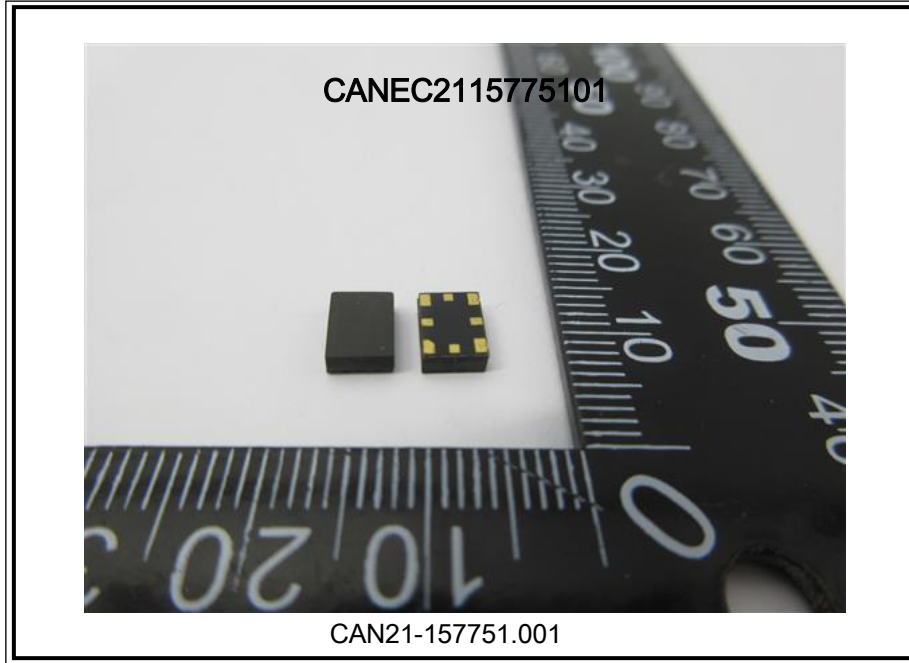
### Phthalates Testing Flow Chart



Unless otherwise agreed in writing, this document is issued by the Company subject to its General Conditions of Service printed overleaf, available on request or accessible at <http://www.sgs.com/en/Terms-and-Conditions.aspx> and, for electronic format documents, subject to Terms and Conditions for Electronic Documents at <http://www.sgs.com/en/Terms-and-Conditions/Terms-e-Document.aspx>. Attention is drawn to the limitation of liability, indemnification and jurisdiction issues defined therein. Any holder of this document is advised that information contained hereon reflects the Company's findings at the time of its intervention only and within the limits of Client's instructions, if any. The Company's sole responsibility is to its Client and this document does not exonerate parties to a transaction from exercising all their rights and obligations under the transaction documents. This document cannot be reproduced except in full, without prior written approval of the Company. Any unauthorized alteration, forgery or falsification of the content or appearance of this document is unlawful and offenders may be prosecuted to the fullest extent of the law. Unless otherwise stated the results shown in this test report refer only to the sample(s) tested.

Attention: To check the authenticity of testing / inspection report & certificate, please contact us at telephone: (86-755) 8307 1443, or email: [CN.Doccheck@sgs.com](mailto:CN.Doccheck@sgs.com)

Sample photo:



SGS authenticate the photo on original report only

\*\*\* End of Report \*\*\*

