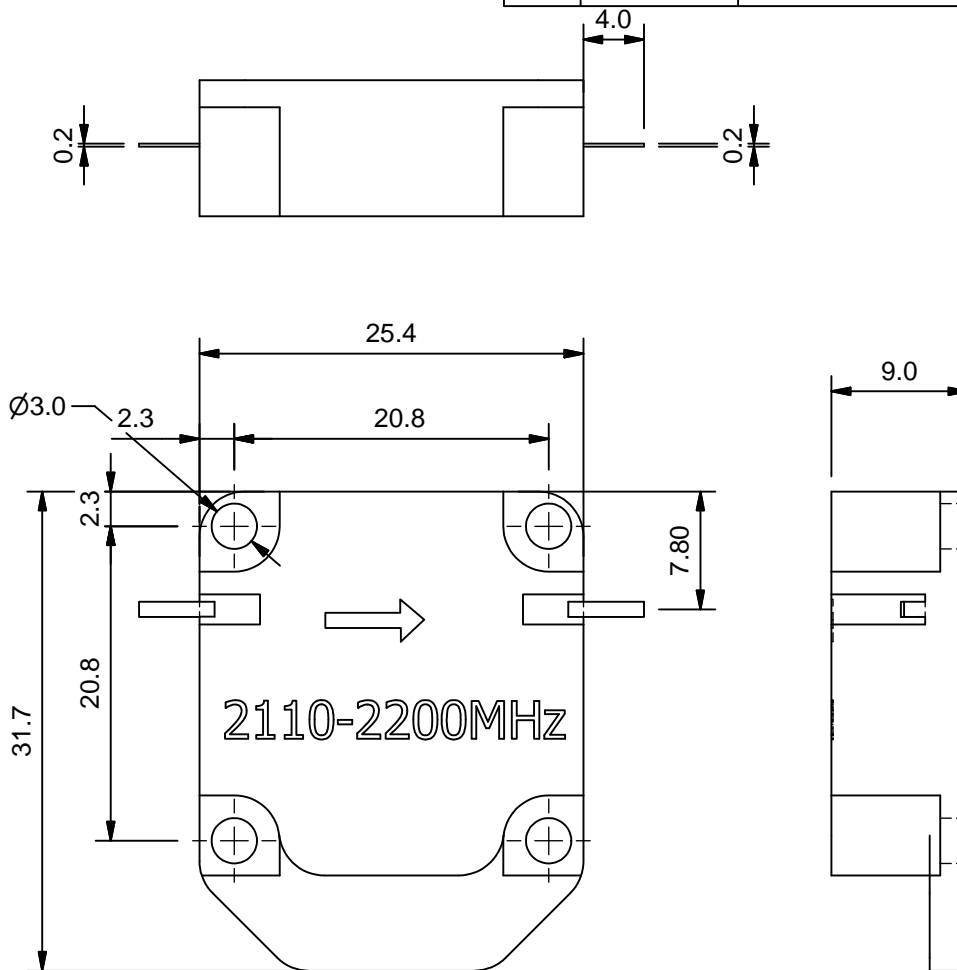


Weight: 0.014 kg  
Area: 2570 mm<sup>2</sup>

REVISION				
REV	ECN	DESCRIPTION	DATE	APP
A0		INITIAL ISSUE	2021-06-03	jimmy



技术说明:  
1.中心导体: 镀银  
2.满足ROHS要求  
3.未注公差±0.2

项目	单位	指标	
工作频率	MHz	2110-2200	
工作温度	℃	-40~+90	
传输方向		顺时针	
插入损耗	dB max	0.25	Room Temp (+25℃±5)
	dB max	0.30	Over Temp (-40℃~+90℃)
隔离度	dB min	28	Room Temp (+25℃±5)
	dB min	25	Over Temp (-40℃~+90℃)
回波损耗	dB min	28@P1	Room Temp (+25℃±5)
	dB min	25@P1	Over Temp (-40℃~+90℃)
	dB min	25@P2	Over Temp (-40℃~+90℃)
带内波动	dB max	2020-2290MHz:通带每60MHz为0.5, 整个通带为0.6	
正向功率	W	150	(P1-P2)
峰值功率	W	800	(P1-P2) 0.01% duty cycle
负载功率	W	150	测试1分钟
开路功率	W	90	P2输入, F1开路 (基准温度20度), 测试1分钟
失配负载功率	W	45	P2输入, F1开路 (基准温度20度), 连续工作
前向三阶互调	80dBc min. @ 6 tones, 39dBm per tone or 70dBc min. @ 2 tones, 48dBm per tone		
反向三阶互调	< -89.5dBc		
端口阻抗	Ω	50	

ORIGINATOR:	MECHANICAL:	ELECTRICAL:	APPR_BY:
Jimmy	hanson	zard	jack
2021/6/3	2021/6/3	2021/6/3	2021/6/3

TOLERANCES (UNLESS SPECIFIED)  
 0. = ±0.20  
 .0 = ±0.10  
 .00 = ±0.05  
 .000 = ±0.02  
 .0000 = ±0.01  
 ANGLE = ± 1/2 DEGREES  
 ROUGHNESS Ra1.6  
 (UNLESS SPECIFIED)

TITLE:		ERP No.:
PF1117221 2100 隔离器		11F11172218010A0
MATERIAL:		DRAWING No.:
		F1117221_801
FINISH:		PROJECT No.:
		PF1117221
SIZE:	UNIT:	SHEET:
A4	MM	
SCALE:	REV:	
1:1	A0	

**PIVOTONE**  
Pivotone Communication Technologies, Inc.