

Travelling Merchant: _____

DATASHEET

Standard: **DPAM13000001**

Plot			The Label
Drew	Audited	Approved	Stamp, please! Thanks!
Date: 2020.09.24			

Guangdong Dapu Telecom Technology Co.,LTD

Bldg13-16,.N.Ind.Zone,SSL Industry Park, Dongguan City, Guangdong Province, China

TEL: 0086-0769-88010888 FAX: 0086-0769-81800098

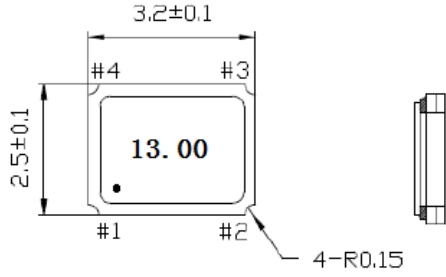


1、 Electrical Parameters

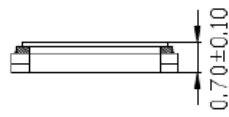
MODEL: DPAM13000001							
No.	Parameters	SYM.	Electrical Spec.				Notes
			Min.	Typ.	Max.	Units	
1	Nominal Frequency	FL	13.00			MHz	
2	Oscillation Mode	-	Fundamental				
3	Load Capacitance	LC		12		pF	
4	Initial Frequency Accuracy	-	-10		+10	$\times 10^{-6}$	At 25°C +/-3°C
5	Frequency Stability	-	-30		+30	$\times 10^{-6}$	-40°C ~85°C
6	Operating Temperature	-	-40		+85	°C	
7	Insulation R	-	500			MΩ	DC100V
8	Aging	-	-3		+3	$\times 10^{-6}$	
9	Resonance Resistance				80	Ω	
10	Drive Level	DL		10	100	uW	
11	Shunt Capacitance C0	C0			3	pF	
12	Storage temperature range		-40		+85	°C	
13	ESD Level	Human Body Model,class2: 2000V to 4000V; ANSI/ESDA/JEDEC JS-001-2010					
		Machine Model, class B: 200V to 400V; JEDEC JESD22-A115C.					
14	Moisture Sensitivity Level	Level 2					
15	Vibration	Test Condition: 0.75mm ;acceleration: 10g;10Hz~2000Hz, one cycle per 30 min, test 2 hour. (3 times for each 3 directions X , Y , Z). IEC 68-2-06 Test Fc.					
16	Shock	100g; 6ms; half sine wave (3 times for each 3 directions X , Y , Z),IEC 68-2-27 Test Ea/Severity 50A.					



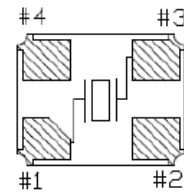
2、Mechanical Structure(mm)



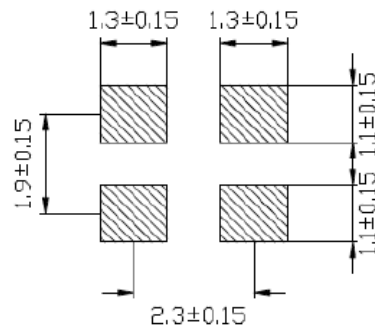
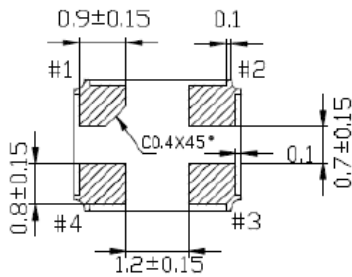
PIN CONNECT	
1,3	Crystal
2,4	GND



<TOP VIEW>



LAND PATTERN<REFERENCE>



3、Package: Tape & Reel (mm)

