

Customer Code: _____

DATASHEET

DAPU P/N: **D32-38.40MHz** **X3225YE38401**

DAPU			Customer Approval
Drew	Audited	Approved	Stamp, please! Thanks!
Date: 2017.10.17			

Guangdong Dapu Telecom Technology Co.,Ltd

Bldg13-16,N.Ind.Zone,SSL Industry Park, Dongguan City, Guangdong Province, China

TEL: 0086-0769-88010888 FAX: 0086-0769-81800098



Table of amendment

Version	Revision contents	Prepared by	Revised date
1.0	The first issued	<i>Amway</i>	2017.10.17



1. Electrical Parameters

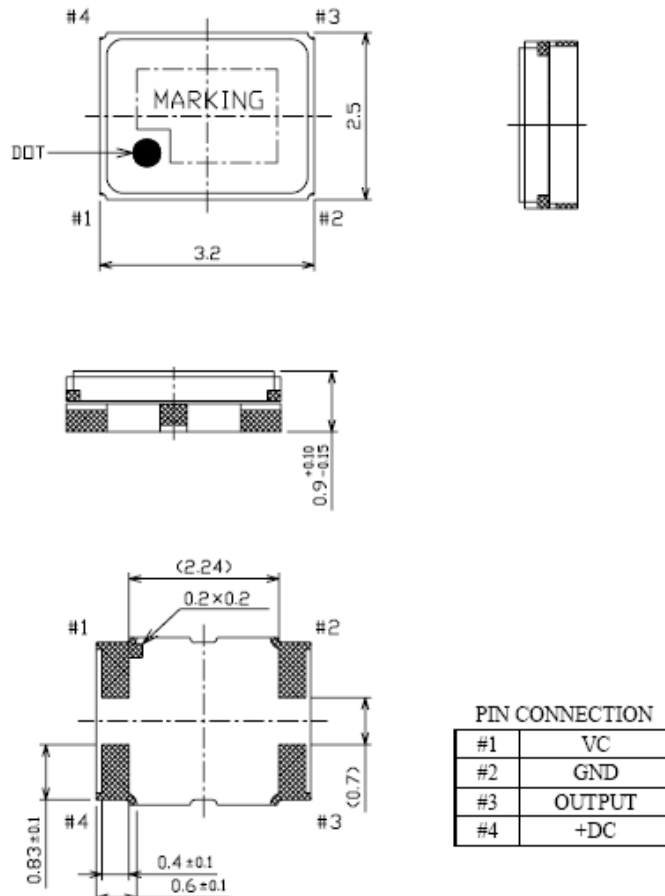
MODEL: D32-38.40MHz

No.	Parameters	SYM.	Electrical Spec.				Notes	
			Min.	Typ.	Max.	Units		
1	Nominal Frequency	-	38.40			MHz		
2	Supply Voltage	-	3.135	3.3	3.465	V		
3	Current Drain	-	-	1.0	-	mA		
4	Output Level	-	0.8	-	-	Vp-p		
5	Output Waveform	-	Clipped Sine wave			-		
6	Standard Output Load	-	10KΩ//10pF			-		
7	Frequency Stability	vs.Initial Tolerance	-	-0.5	-	+0.5	$\times 10^{-6}$	Measurement referenced to frequency observed with TA=25°C, Vcc=3.3V within 30 days after ex-works
8		vs. Temperature	-	-0.5	-	+0.5	$\times 10^{-6}$	TA varied from -30°C to +85°C, Ref. to Frequency TA=25°C
9			-	-1.0	-	+1.0	$\times 10^{-6}/^{\circ}\text{C}$	TA=-40~-30°C Ref. to Frequency (TA=+25°C)
10		vs. Load	-	-0.2	-	+0.2	$\times 10^{-6}$	±5% load change measurement referenced to frequency observed with TA= 25°C, Vcc=3.0V, OLoad= 10KΩ//10pF .
11		vs. Supply Voltage	-	-0.3	-	+0.3	$\times 10^{-6}$	Vcc varied from 3.135V to 3.465V
12	Operating Temperature Range	-	-40	~	+85	°C		
13	Storage Temperature	-	-40	~	+85	°C		
14	Start Up Time	-	-	-	2.0	ms	@90% of final Vout level	
15	Duty Cycle	-	45	~	55	%		
16	Aging	-	-0.02	-	+0.02	$\times 10^{-6}$	Daily	
17		-	-1.0	-	+1.0	$\times 10^{-6}$	1st Year	
18	Frequency Tuning Range	-	-	-	-10	$\times 10^{-6}$	Vc= 0.5 V. measurement referenced to Vc=1.5V	
		-	+10	-	-	$\times 10^{-6}$	Vc=2.5V.measurement referenced to Vc=1.5V	
19	Linearity	-	-	-	10	%		
20	Slope	-	Positive					
21	Input Impedance	-	500			KΩ		



22	Phase Noise	@ 10Hz Offset	-	-	-85	-	dBc/Hz	
23		@ 100Hz Offset	-	-	-110	-	dBc/Hz	
24		@ 1KHz Offset	-	-	-135	-	dBc/Hz	
25		@ 10KHz Offset	-	-	-145	-	dBc/Hz	
26	ESD Level	Human Body Model,class2: 2000V to 4000V; ANSI/ESDA/JEDEC JS-001-2010.						
		Machine Model, class B: 200V to 400V; ANSI/ESDA/JEDEC JS-001-2010.						
27	Moisture Sensitivity Level	Level 2.						
28	Vibration	Test Condition: 0.75mm ;acceleration:10g;10Hz~2000Hz, one cycle per 30 min, test 2 hour. (3 times for each 3 directions X , Y , Z) .IEC 68-2-06 Test Fc.						
29	Shock	100g; 6ms; half sine wave (3 times for each 3 directions X , Y , Z),IEC 68-2-27 Test Ea/Severity 50A.						

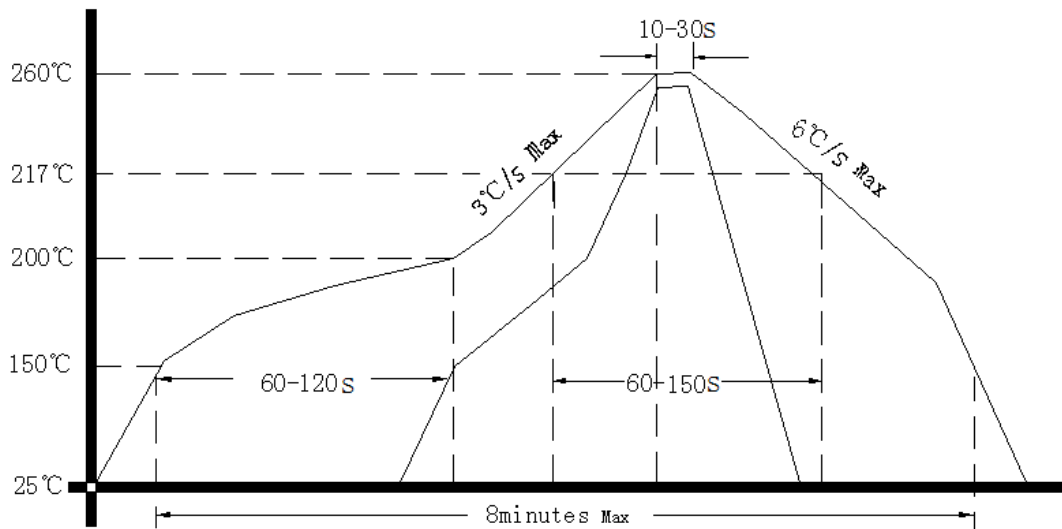
2.Mechanical Structure(mm)



Note1: Tolerance ±0.2mm



3、 Reflow Soldering Curve (RoHS)



4、 Package: Tape & Reel (mm)

