

Travelling Merchant: _____

DATASHEET

Standard: DP5X32768002

| Plot | | | The Label |
|------------------|---------|----------|------------------------|
| Drew | Audited | Approved | Stamp, please! Thanks! |
| | | | |
| Date: 2019.11.13 | | | |

Guangdong Dapu Telecom Technology Co.,LTD

Bldg13-16,.N.Ind.Zone,SSL Industry Park, Dongguan City, Guangdong Province, China

TEL: 0086-0769-88010888 FAX: 0086-0769-81800098

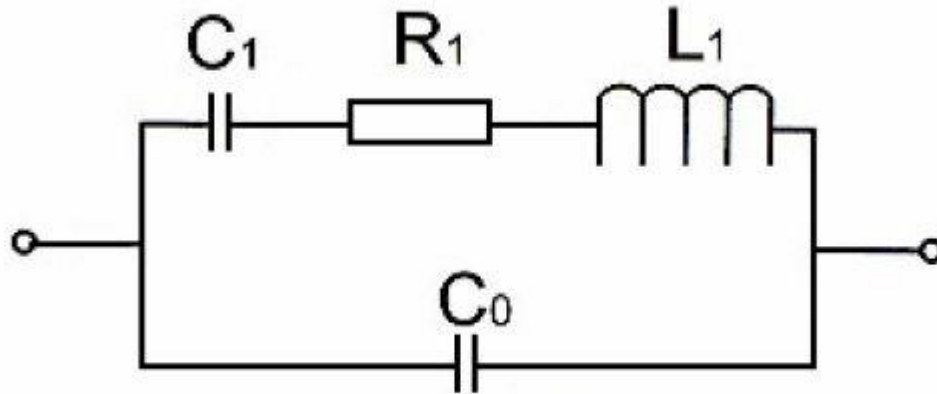


1、 Electrical Parameters

| MODEL: DP5X32768001 | | | | | | | |
|---------------------|------------------------------|--|------------------|------|-------|---------------------|-------------------|
| No. | Parameters | SYM. | Electrical Spec. | | | | Notes |
| | | | Min. | Typ. | Max. | Units | |
| 1 | Nominal Frequency | FL | 32.768 | | | KHz | |
| 2 | Oscillation Mode | - | Fundamental | | | - | |
| 3 | Load Capacitance | CL | 12.5 | | | pF | |
| 4 | Frequency Tolerance | - | -20 | | +20 | $\times 10^{-6}$ | at 25°C \pm 3°C |
| 5 | Parabolic Coefficient | - | | | -0.04 | PPM/°C ² | |
| 6 | Operating Temperature | - | -40 | | +85 | °C | |
| 7 | Storage Temperature Range | - | -55 | | +125 | °C | |
| 8 | Aging | - | -3 | | +3 | $\times 10^{-6}$ | +25°C, First year |
| 9 | Drive Level | DL | | 0.1 | 0.5 | uW | |
| 10 | Equivalent Series Resistance | | | | 90 | K Ω | |
| 11 | Motional capacitance | C1 | 3.0 | 4.0 | 5.0 | fF | |
| 12 | Shunt Capacitance | C0 | 0.7 | 1.0 | 1.3 | pF | |
| 13 | Insulation Resistance | - | 500 | - | - | M Ω | at DC 100V |
| 14 | Quality Factor | Q | 13 | | | K Ω | |
| 15 | ESD Level | Human Body Model,class2: 2000V to 4000V; ANSI/ESDA/JEDEC JS-001-2010 | | | | | |
| | | Machine Model, class B: 200V to 400V; ANSI/ESDA/JEDEC JS-001-2010 | | | | | |
| 16 | Moisture Sensitivity Level | Level 2 | | | | | |
| 17 | Vibration | Test Condition: 0.75mm ;acceleration:10g;10Hz~2000Hz, one cycle per 30 min, test 2 hour. (3 times for each 3 directions X , Y , Z). IEC 68-2-06 Test Fc. | | | | | |
| 18 | Shock | 100g; 6ms; half sine wave (3 times for each 3 directions X , Y , Z),IEC 68-2-27 Test Ea/Severity 50A. | | | | | |

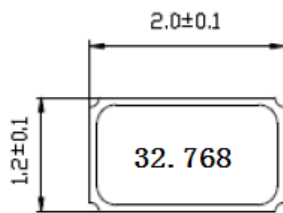


2、Equivalent Circuit



Equivalent Circuit

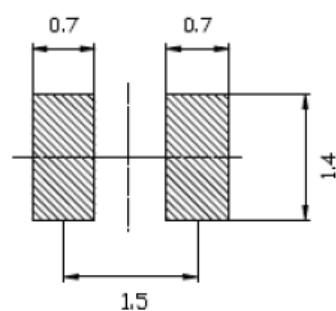
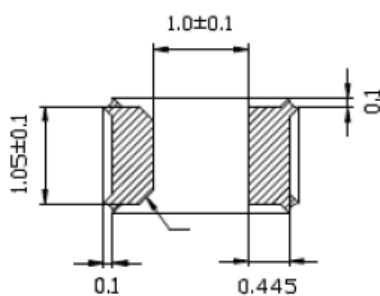
3、Mechanical Structure(mm)



<TOP VIEW>



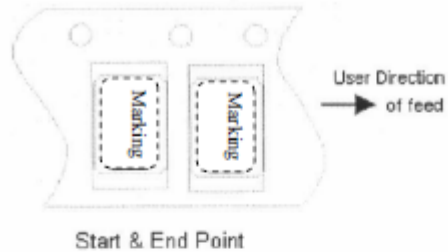
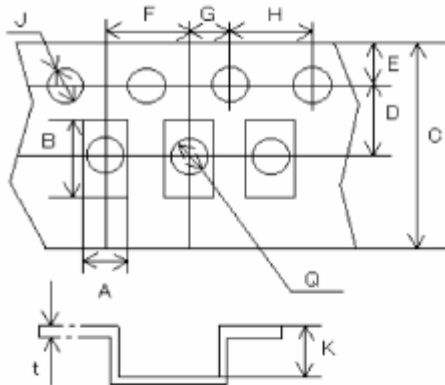
LAND PATTERN<REFERENCE>





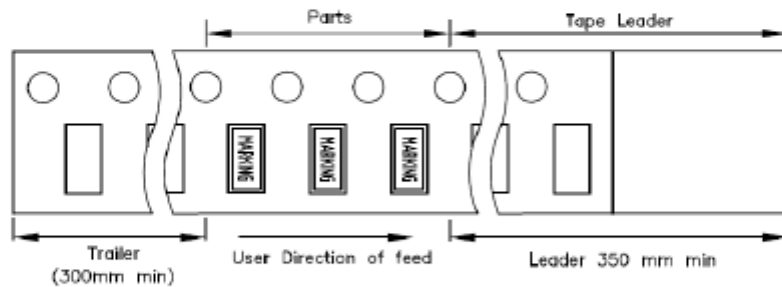
4、 Package: Tape & Reel (mm)

CARRIER TYPE

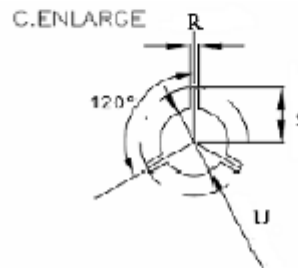
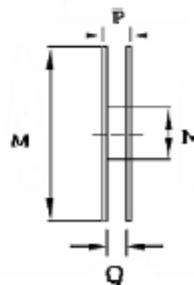
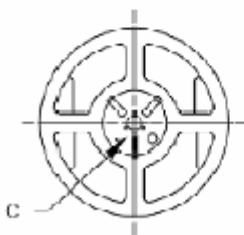


| A | B | C | D | E | F | G | H | J | K | t |
|-----|-----|-----|-----|------|-----|-----|-----|-----|------|------|
| 1.4 | 2.3 | 8.0 | 3.5 | 1.75 | 4.0 | 2.0 | 4.0 | 1.5 | 0.75 | 0.25 |

REMARK:



REEL: 3000 PCS/Reel



| M | N | P | Q | R | S | U |
|-----|------|------|-----|-----|------|------|
| 178 | 60.2 | 11.5 | 8.0 | 2.5 | 11.0 | 13.0 |