

Travelling Merchant: _____

DATASHEET

Standard: **DPBB10000001**

| Plot | | | The Label |
|-------|---------|----------|------------------------|
| Drew | Audited | Approved | Stamp, please! Thanks! |
| | | | |
| Date: | | | |

Guangdong Dapu Telecom Technology Co.,Ltd

Bldg13,.N.Ind.Zone,SSL Industry Park, Dongguan City, Guangdong Province, China
TEL: 0086-0769-88010888 FAX: 0086-0769-81800098



1、Electrical Parameters

| MODEL: DPBB1000001 | | | | | | |
|--------------------|------------------------------|--|------------------|------|----------|--------|
| No. | Parameters | Condition. | Electrical Spec. | | | |
| | | | Min. | Typ. | Max. | Units |
| 1 | Nominal Frequency | FL | 100.000000 | | | MHz |
| 2 | Oscillation Mode | | 3rd Overtone | | | |
| 3 | Frequency Stability | Note 1 | -50 | | +50 | ppm |
| 4 | Operating Temperature | | -40 | ~ | 85 | °C |
| 5 | Storage Temperature | | -55 | ~ | 125 | °C |
| 6 | Supply Voltage | VDD | -0.125 | 2.5 | 0.125 | V |
| 7 | Current Consumption | RL=50Ω to VDD-2V | - | - | 80 | mA |
| 8 | Standby Function | Internal Pull Up | Yes | | | |
| 9 | Current Consumption(Standby) | OE=Low | - | - | 10 | uA |
| 10 | Output Type | | LVPECL | | | |
| 11 | Output Load | | 50 | | | Ω |
| 12 | Output Voltage High | VoH | VDD-1.025 | - | VDD-0.88 | V |
| 13 | Output Voltage Low | Vol | VDD-1.81 | - | VDD-1.62 | V |
| 14 | Rise Time | 20% ~ 80% Output Swing | - | - | 1 | ns |
| 15 | Fall Time | 80% ~ 20% Output Swing | - | - | 1 | ns |
| 16 | Symmetry | | 45 | 50 | 55 | % |
| 17 | Start-up Time | To 90% of Final Amplitude | - | - | 10 | ms |
| 18 | Enable Voltage High(Logic 1) | Note 2 | 0.7VDD | - | - | V |
| 19 | Disable Voltage Low(Logic 0) | Note 2 | - | - | 0.3VDD | V |
| 20 | Output Disable Delay Time | | - | - | 500 | μS |
| 21 | Output Enable Delay Time | | - | - | 500 | μS |
| 22 | Phase Jitter | 12K ~ 20MHz | - | - | 1 | pS rms |
| 23 | Drop Test | 75 cm height,3 times on concrete floor . | | | | |
| 24 | Mechanical Shock | Device are shocked to half sine wave (1000 G) three mutually. perpendicular axes each 3 times. 0.5m sec. duration time | | | | |

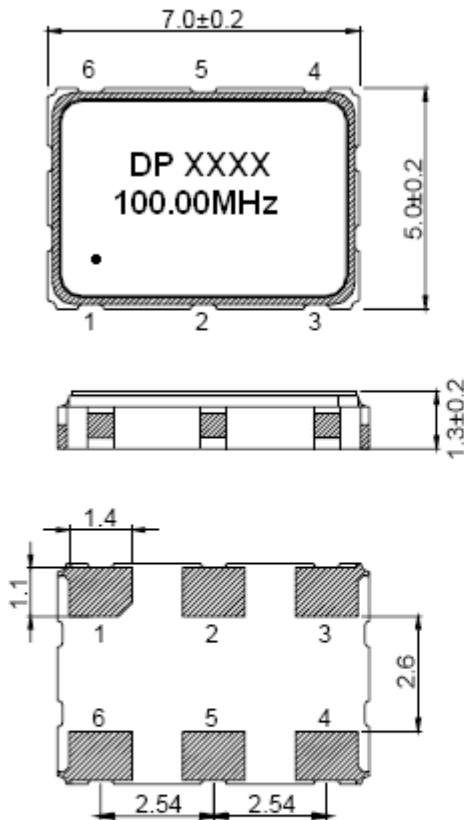


| | | | |
|----|-----------|-----------------------------------|----------------------------|
| 25 | Vibration | Frequency range | 10 ~ 2000 Hz |
| | | Amplitude | 1.52 mm/20G |
| | | Sweep time | 20 minutes |
| | | perpendicular axes each test time | 4 hours |
| | | | (Total test time 12 hours) |

Note 1 Inclusive of frequency tolerance at 25degC, variation over temperature, supply voltage variation, aging and vibration.

Note 2 Output will be enable if OE is Logic 1 or open ; Output will be disable if OE is Logic 0.

2、Mechanical Structure(mm)

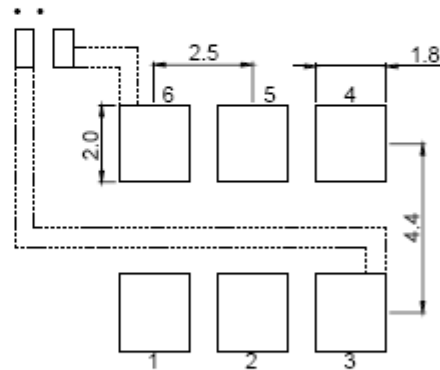


• • Pad dimension tolerance ±0.2 mm

Pin Function:

1. OE
2. NC
3. **Connected with the cover**
4. OUT
5. $\overline{\text{OUT}}$
6. VDD

Land Pattern:



• • Power Supply Decoupling Capacitor is Required.

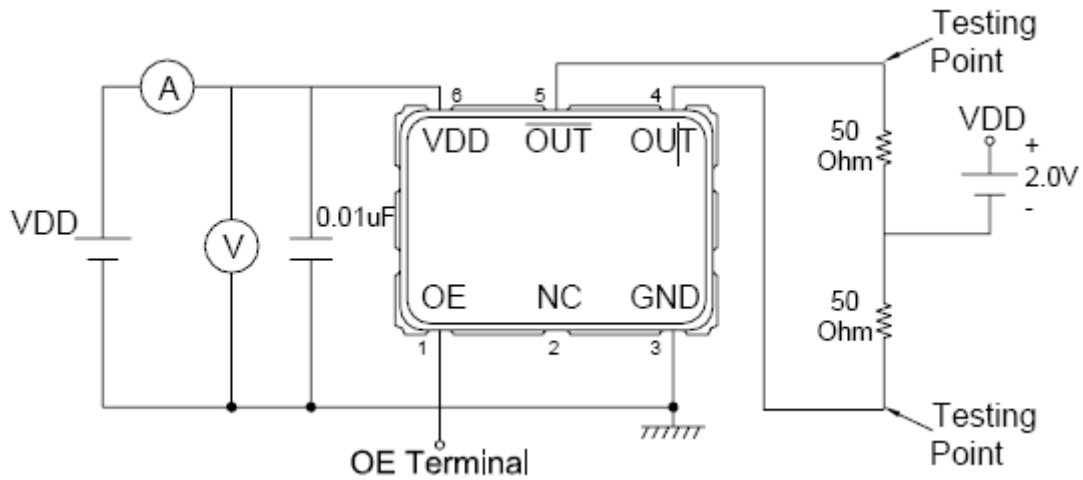
• • Pad dimension tolerance ±0.2 mm

Note: Play inversion between kikuchi map instructions:

- 1)The first two xx representative : year
- 2)After two xx representative : week



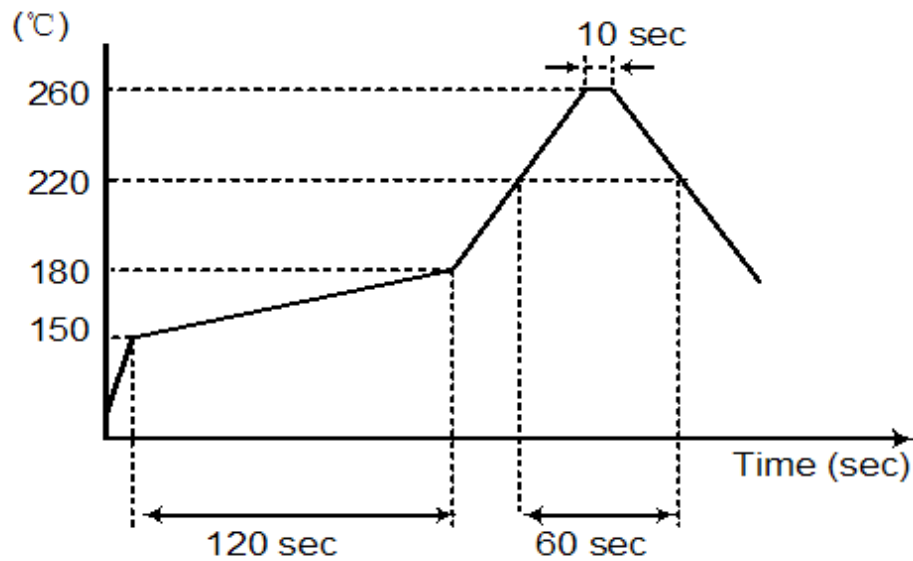
3、 Testing Circuit



Testing Circuit Note:

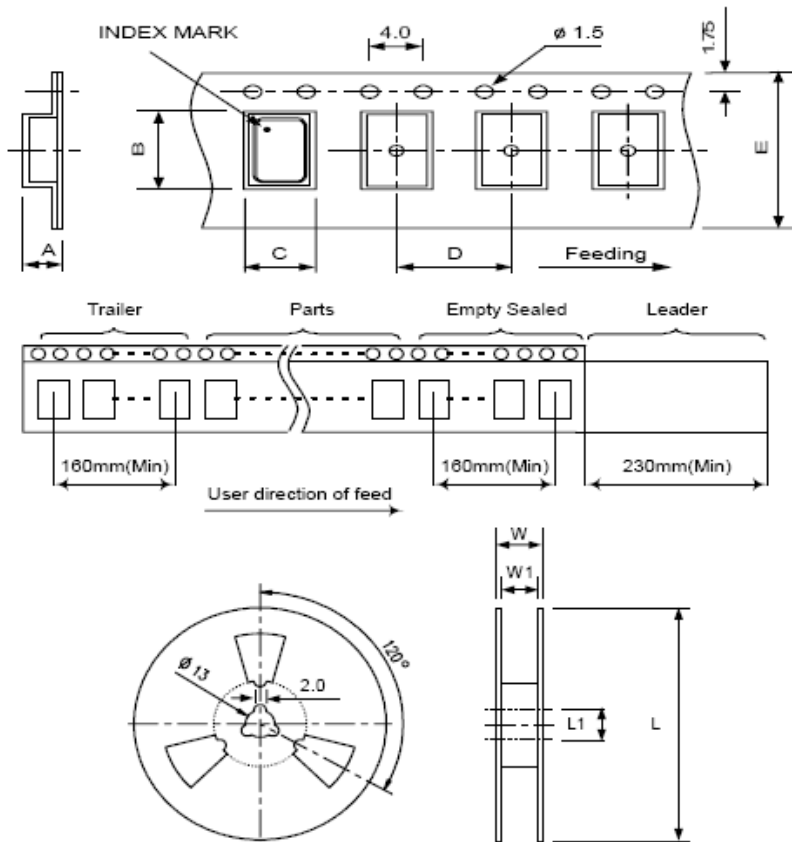
- 1) Above testing circuits cover all the specifications except temperature test & Jitter measurement.
- 2) All the testing equipments are 50Ohm terminal.
- 3) OE terminal is open connection except OE function test.

4、 Suggested Reflow Profile (RoHS)





5、 Package: Tape & Reel (mm)



Unit: mm

| DIMENSIONS | A | B | C | D | E | L | L1 | W | W1 | Standard Reel Quantity is 1,000 pcs per reel |
|------------|------|------|------|------|------|-------|------|------|------|--|
| | 2.00 | 7.90 | 5.45 | 8.00 | 16.0 | 180.0 | 13.0 | 20.5 | 16.0 | |