

Customer Code: \_\_\_\_\_

# DATASHEET

DAPU P/N: DP7X24000009

Y32NN24002/2PY32NN24002

DAPU			Customer Approval
Drew	Audited	Approved	Stamp, please! Thanks!
Date: 2020.07.13			

## Guangdong Dapu Telecom Technology Co.,Ltd

Bldg 16,.N.Ind.Zone,SSL Industry Park, Dongguan City, Guangdong Province, China

TEL: 0086-0769-88010888 FAX: 0086-0769-81800098

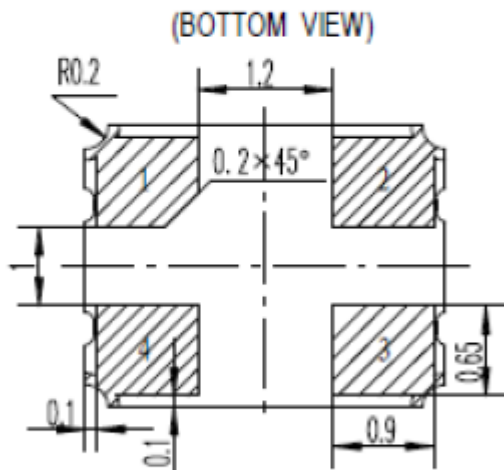
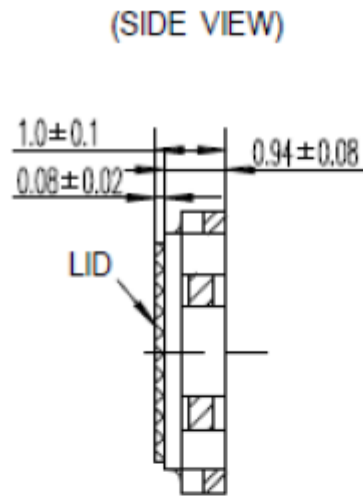
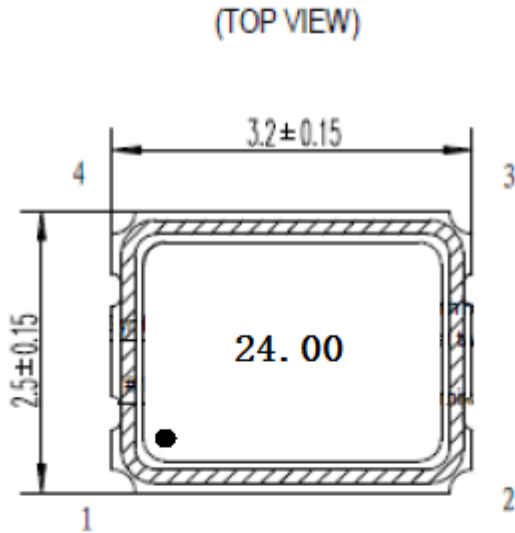


## 1、 Electrical Parameters

MODEL: DP7X24000009							
No	Parameters	SYM.	Electrical Spec.				Notes
			Min.	Typ.	Max.	Units	
1	Nominal Frequency	FL	24.00			MHz	
2	Output Load Capacitance	CL	COMS			-	
3	Frequency Stability	-	-25		+25	$\times 10^{-6}$	@25°C
	Supply Variation	-	-1		+1	$\times 10^{-6}$	Vcc+/-5%
	Load Variation	-	-1		+1	$\times 10^{-6}$	CL+/-5%
4	Maximum Supply Voltage Range	-	-0.5	-	6	V	
5	Operating Temperature	Topr	-40	25	+85	°C	
6	Storage Temperature	Tstg	-55	~	+125	°C	
7	Supply Voltage		1.62	1.8	1.98	V	
8	Output load	-	15			pF	
9	“H” Input Voltage	VIH	0.7Vcc			V	
	“L” Input Voltage	VIL			0.3Vcc	V	
10	Enable/disable function	Logic “1”Or Floating input, Outputs enable; Logic “0” ,Outputs disable					
11	Output Voltage High	VoH	0.9Vcc	-		V	
12	Output Voltage Low	VoL		-	0.1Vcc	V	
13	Symmetry	TH/T	45	~	55	%	
	Rise and Fall time	Tr/Tf			2.5	ns	CL=15PF,20%-80% Vcc
	Jitter	RMS			1	ps	12KHz-20MHz



## 2、Mechanical Structure(mm)



PAD FUNCTION

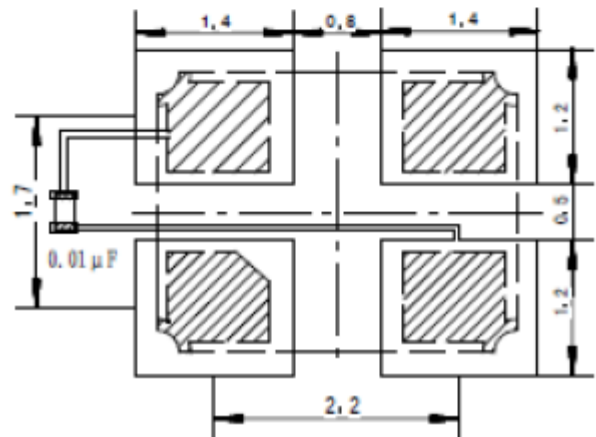
1:ENABLE CONTROL

2:GND

3:OUT

4:VDD

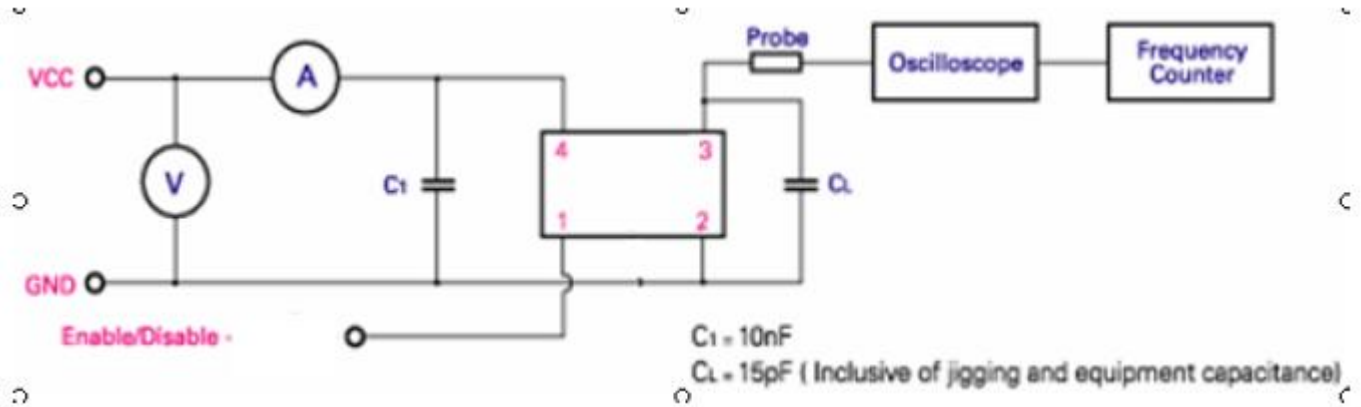
(Recommended Soldering Pattern)



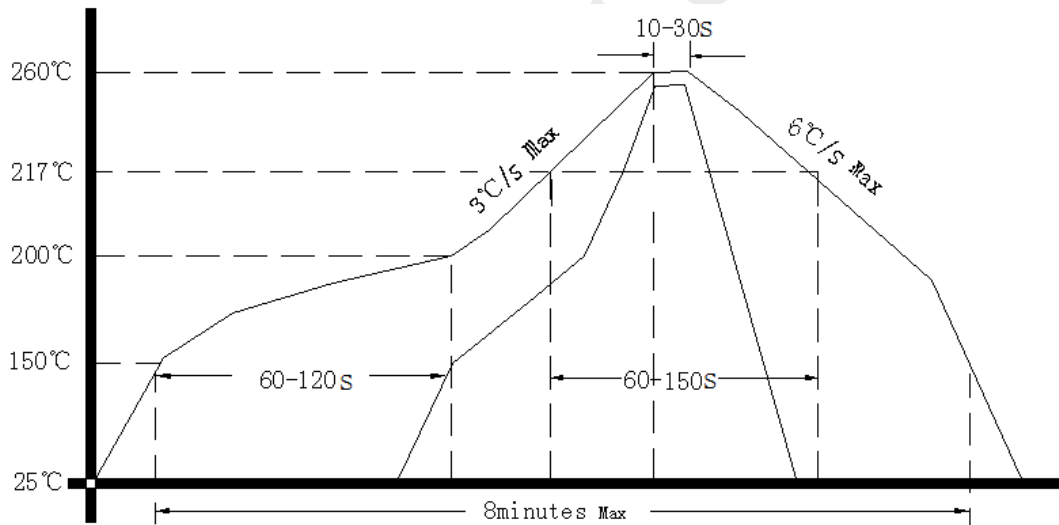
Note1: Tolerance ±0.20mm



### 3、 Test Circuit

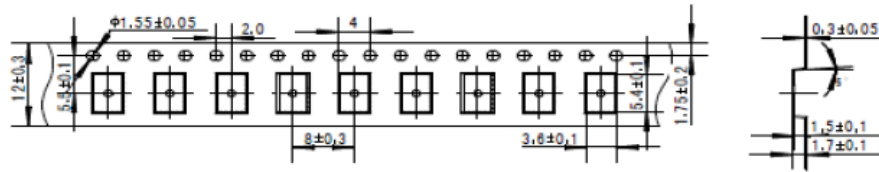


### 4、 Reflow Soldering Curve (RoHS)

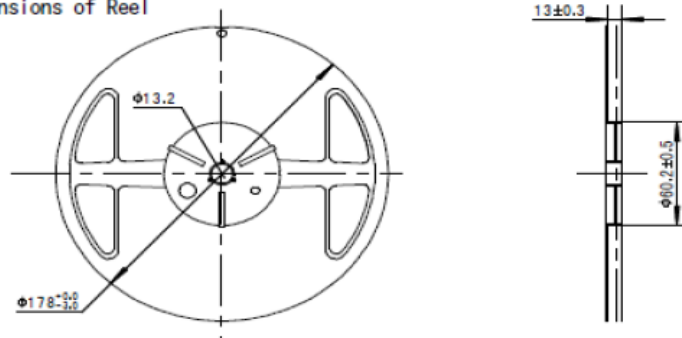




### 5、 Package: Tape & Reel (mm)



Dimensions of Reel



Packing

1 reel/box 1 reel=1000pcs

10 boxes/carton(the carton with bubble pad on four sides)

