

Travelling Merchant: _____

DATASHEET

Standard: **DPAB12000003**

Plot			The Label
Drew	Audited	Approved	Stamp, please! Thanks!
Date: 2020.06.02			

Guangdong Dapu Telecom Technology Co.,LTD

Bldg13-16,.N.Ind.Zone,SSL Industry Park, Dongguan City, Guangdong Province, China

TEL: 0086-0769-88010888 FAX: 0086-0769-81800098

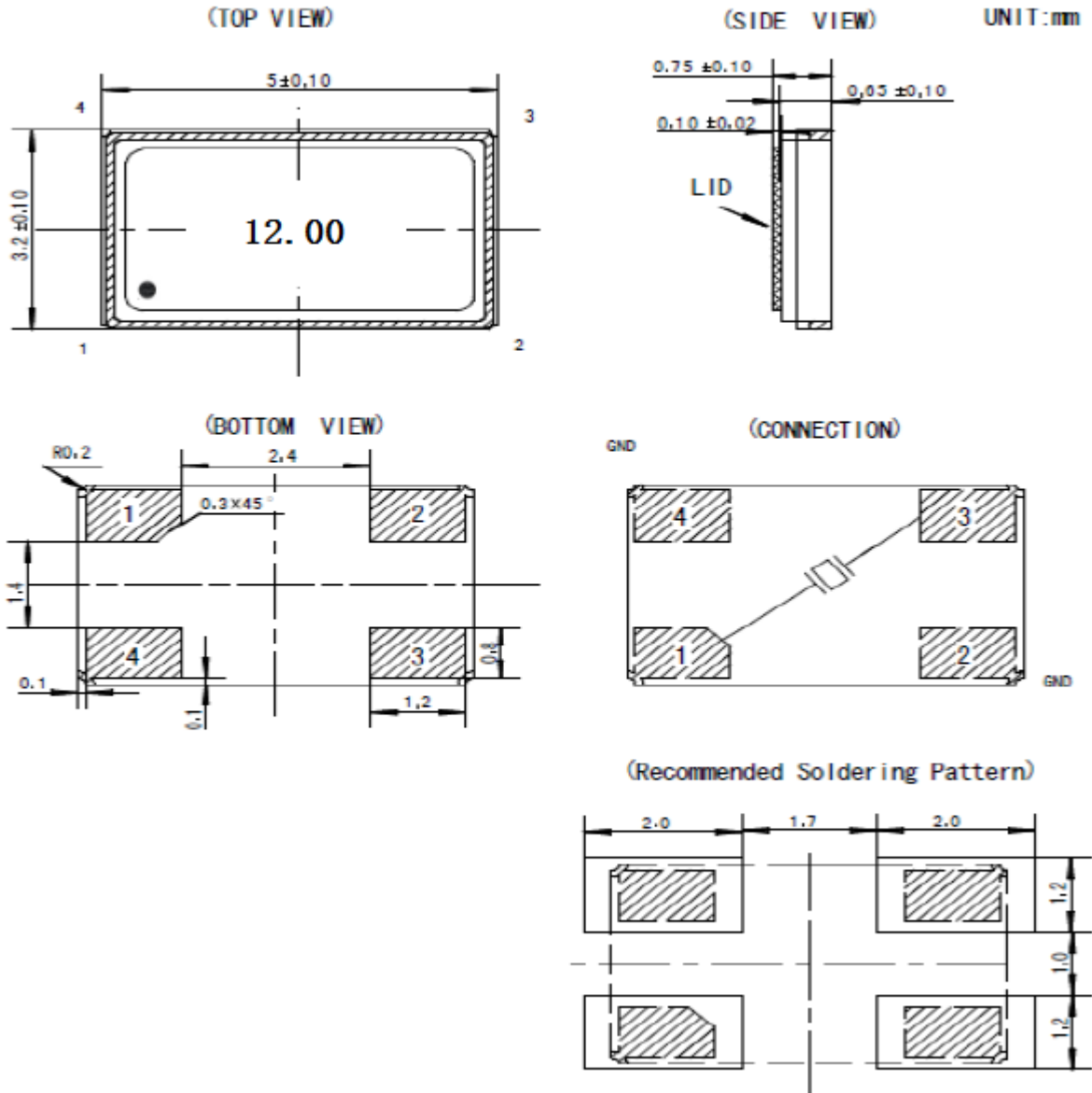


1、 Electrical Parameters

MODEL: DPAB12000003							
No.	Parameters	SYM.	Electrical Spec.				Notes
			Min.	Typ.	Max.	Units	
1	Nominal Frequency	FL	12.00			MHz	
2	Oscillation Mode	-	Fundamental				
3	Load Capacitance	LC		18		pF	
4	Frequency Tolerance	-	-10		+10	$\times 10^{-6}$	
5	Frequency Stability	-	-20		+20	$\times 10^{-6}$	with working temperature Reference to 25°C
6	Operating Temperature	-	-40		85	°C	
7	Insulation R	-	500			MΩ	DC100V
8	Aging	-	-3		+3	$\times 10^{-6}$	
9	Drive Level	DL		100		uW	
10	Resonance Resistor				50	Ω	Max
11	Shunt Capacitance C0	C0			3	pF	
12	RLD2				50	Ω	
13	Autoeciousness				-5	dB	± 5300 PPM of nominal Freq.
14	Storage temperature range		-55		125	°C	
15	ESD Level	Human Body Model,class2: 2000V to 4000V; ANSI/ESDA/JEDEC JS-001-2010					
		Machine Model, class B: 200V to 400V; JEDEC JESD22-A115C.					
16	Moisture Sensitivity Level	Level 2					
17	Vibration	Test Condition: 0.75mm ;acceleration:10g;10Hz~2000Hz, one cycle per 30 min, test 2 hour. (3 times for each 3 directions X ,Y , Z). IEC 68-2-06 Test Fc.					
18	Shock	100g; 6ms; half sine wave (3 times for each 3 directions X ,Y , Z),IEC 68-2-27 Test Ea/Severity 50A.					



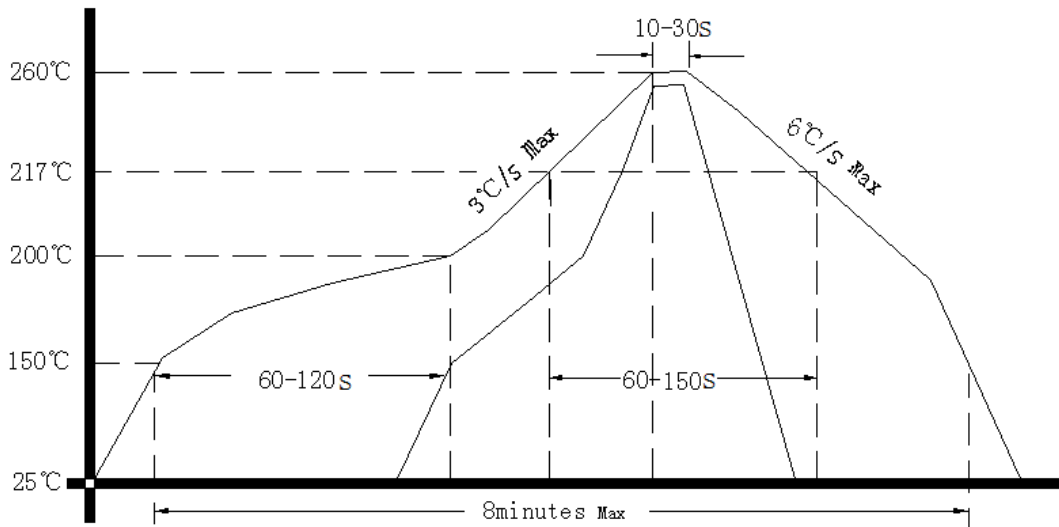
2、Mechanical Structure(mm)



Note1: Tolerance ± 0.2 mm



3、Reflow Soldering Curve (RoHS)



4、Package: Tape & Reel (mm)

