

Travelling Merchant: \_\_\_\_\_

# DATASHEET

Standard: DP7W32000002

Plot			The Label
Drew	Audited	Approved	Stamp, please! Thanks!
Date: 2020.06.02			

## Guangdong Dapu Telecom Technology Co.,Ltd

Bldg13-16,.N.Ind.Zone,SSL Industry Park, Dongguan City, Guangdong Province, China

TEL: 0086-0769-88010888 FAX: 0086-0769-81800098

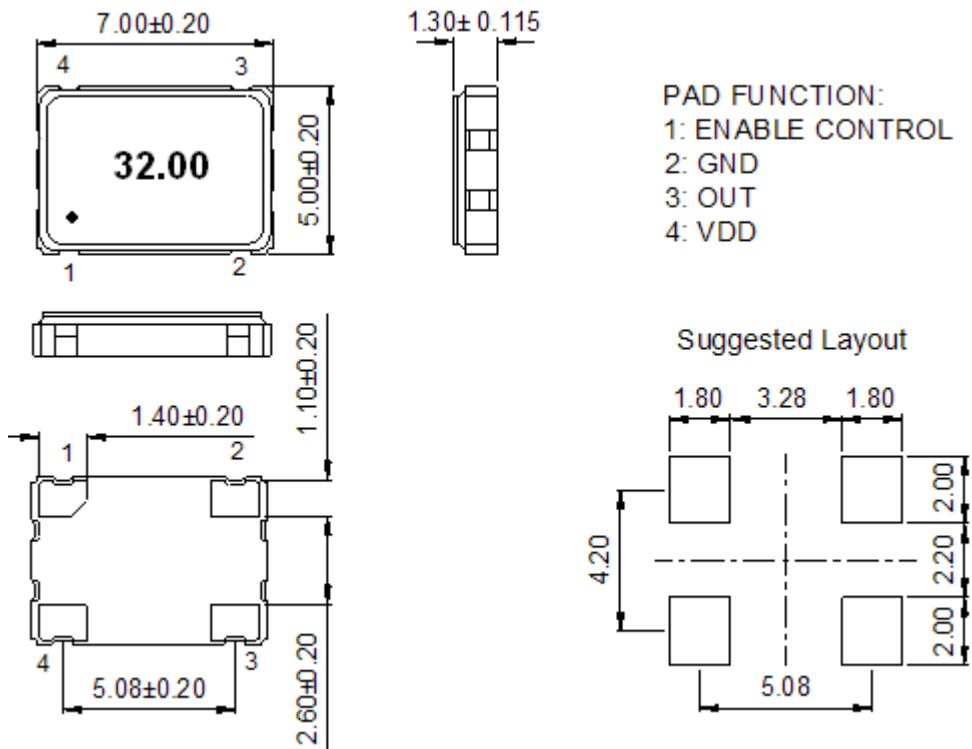


## 1、Electrical Parameters

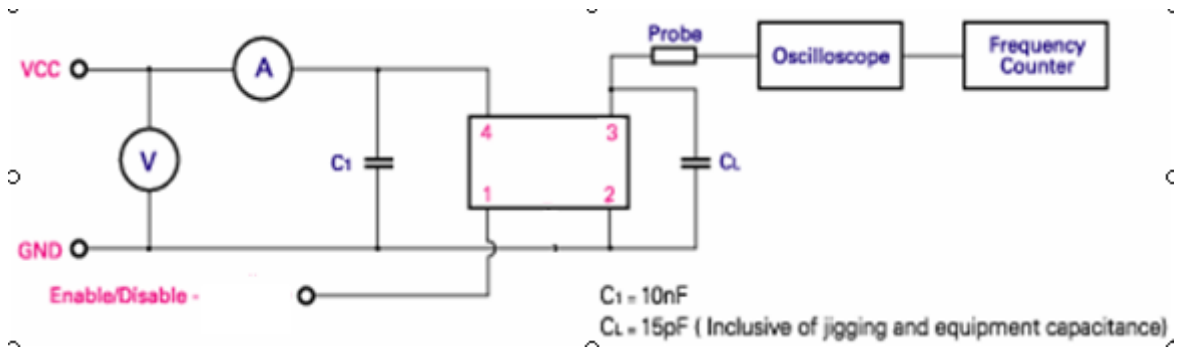
MODEL: DP7W32000002							
No.	Parameters	SYM.	Electrical Spec.				Notes
			Min.	Typ.	Max.	Units	
1	Nominal Frequency	FL	32.00			MHz	
2	Frequency Tolerance	-	-50	~	+50	$\times 10^{-6}$	
3	Operating Temperature	Topr	-20	25	70	$^{\circ}\text{C}$	
4	Storage Temperature	Tstg	-55	~	+155	$^{\circ}\text{C}$	
5	Supply Voltage	Vcc	3.3 $\pm$ 10%			V	
6	Maximum Supply Voltage Range	Vcc	-0.5		6.0	V	
7	Supply Current				12	mA	
8	Output Load: CMOS	CL			15	pF	
9	Output Voltage High	VoH	90% Vcc	-	-	V	
10	Output Voltage Low	Vol	-	-	10% Vcc	V	
11	Rise and Fall Time	Tr	-	-	5	ns	CL=15pF,10%~90% Vcc
12	Jitter	RMS			1	ps	12kHz to 20MHz
13	Symmetry (Duty ratio)	TH/T	45	~	55	%	
14	Start-up Time	Tosc	-	-	5	ms	
15	Enable Control	Logic "1" Or Floating input, Outputs enable; Logic "0", Outputs disable					
16	Input Voltage High	VIH	70% Vcc	-	-	V	
17	Input Voltage Low	VIL	-	-	30% Vcc	V	
18	Aging/Year	-	-2		+2	$\times 10^{-6}$	
19	Supply Variation		-2		+2	$\times 10^{-6}$	Vcc $\pm$ 5%
20	Load Variation		-1		+1	$\times 10^{-6}$	CL $\pm$ 5%
21	ESD Level	Human Body Model,class2: 2000V to 4000V; ANSI/ESDA/JEDEC JS-001-2010.					
		Machine Model, class B: 200V to 400V; JEDEC JESD22-A115C.					
22	Moisture Sensitivity Level	Level 2.					
23	Vibration	Test Condition: 0.75mm ;acceleration:10g;10Hz~2000Hz, one cycle per 30 min, test 2 hour. (3 times for each 3 directions X ,Y , Z) .IEC 68-2-06 Test Fc.					
24	Shock	100g; 6ms; half sine wave (3 times for each 3 directions X ,Y , Z) ,IEC 68-2-27 Test Ea/Severity 50A.					



## 2、Mechanical Structure(mm)

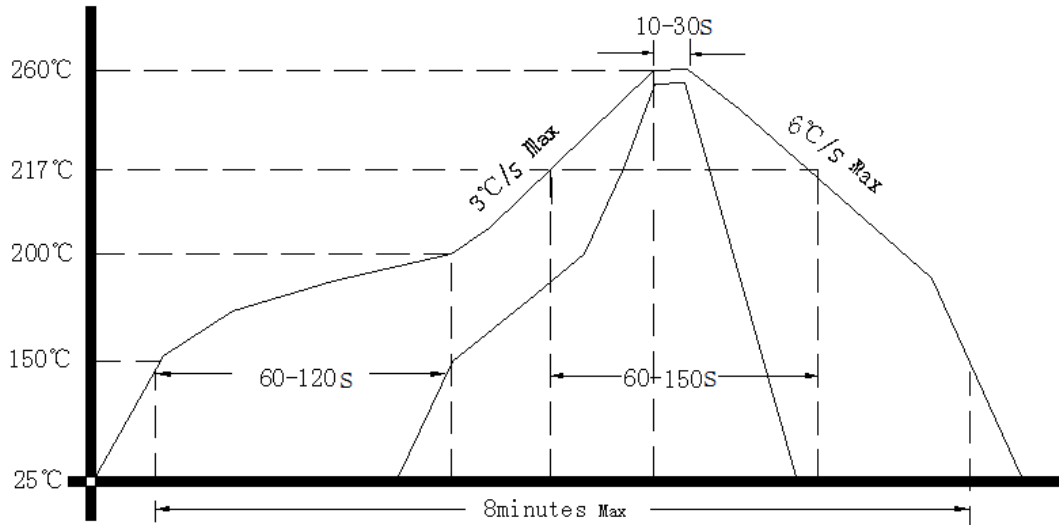


## 3、Test Circuit





#### 4、 Reflow Soldering Curve (RoHS)



#### 5、 Package: Tape & Reel (mm)

