

Travelling Merchant: _____

DATASHEET

Standard: OSC754-D145-GE-125.00MHz

Plot			The Label
Drew	Audited	Approved	Stamp, please! Thanks!
Date: 2012.10.22			

Guangdong Dapu Telecom Technology Co.,Ltd

Bldg13-16,.N.Ind.Zone,SSL Industry Park, Dongguan City, Guangdong Province, China

TEL: 0086-0769-88010888 FAX: 0086-0769-81800098

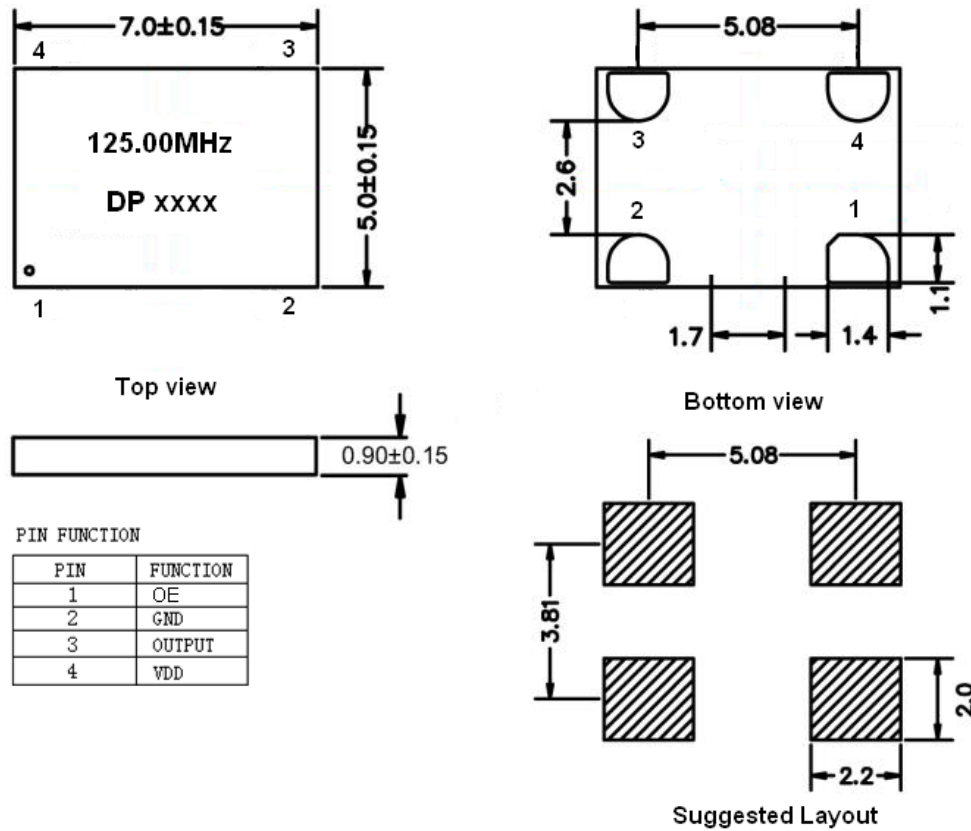


1、Electrical Parameters

MODEL: OSC754-D145-GE-125.00MHZ							
No.	Parameters	SYM.	Electrical Spec.				Notes
			Min.	Typ.	Max.	Units	
1	Nominal Frequency	FL	125.000			MHz	
2	Frequency Stability	-	-50	~	+50	$\times 10^{-6}$	
3	Operating Temperature	Topr	-20	~	+70	$^{\circ}\text{C}$	
4	Storage Temperature	Tstg	-55	~	+125	$^{\circ}\text{C}$	
5	Supply Voltage	VDD	2.97	3.30	3.63	V	
6	Input Current	Icc	-	-	34	mA	
7	Output Load: CMOS	CL	15			pF	
8	Output Voltage High	VoH	90% Vdd	-	-	V	
9	Output Voltage Low	Vol	-	-	10% Vdd	V	
10	Rise Time	Tr	-	1.0	1.5	ns	10%-90% VDD Level
11	Fall Time	Tf	-	1.0	1.5	ns	90%-10% VDD Level
12	Output Voltage High	VIH	70%	-	-	Vdd	Pin 1,OE
13	Output Voltage Low	Vol	-	-	30%	Vdd	Pin 1,OE
14	Symmetry (Duty ratio)	TH/T	45	~	55	%	
15	Phase Jitter	T_phj	-	0.38	-	ps	12 kHz~20 MHz
16	Start-up Time	Tosc	-	6	10	ms	
17	Aging	-	-1.0	~	1.0	$\times 10^{-6}$	1st. Year at 25 $^{\circ}\text{C}$
18	Drop Test	75 cm height,3 times on concrete floor .				JIS C6701	
19	ESD Level	Human Body Model, class2: 2000V to 4000V; ANSI/ESDA/JEDEC JS-001-2010.					
		Machine Model, class B: 200V to 400V; ANSI/ESDA/JEDEC JS-001-2010.					
20	Moisture Sensitivity Level	Level 2.					
21	Mechanical Shock	Device are shocked to half sine wave (1000 G) three mutually. perpendicular axes each 3 times. 0.5m sec. duration time				MIL-STD-202F	
22	Vibration	Frequency range				10 ~ 2000 Hz	MIL-STD-883E
		Amplitude				1.52 mm/20G	
		Sweep time				20 minutes	
		perpendicular axes each test time				4 hours	
		(Total test time 12 hours)					



2、Mechanical Structure(mm)

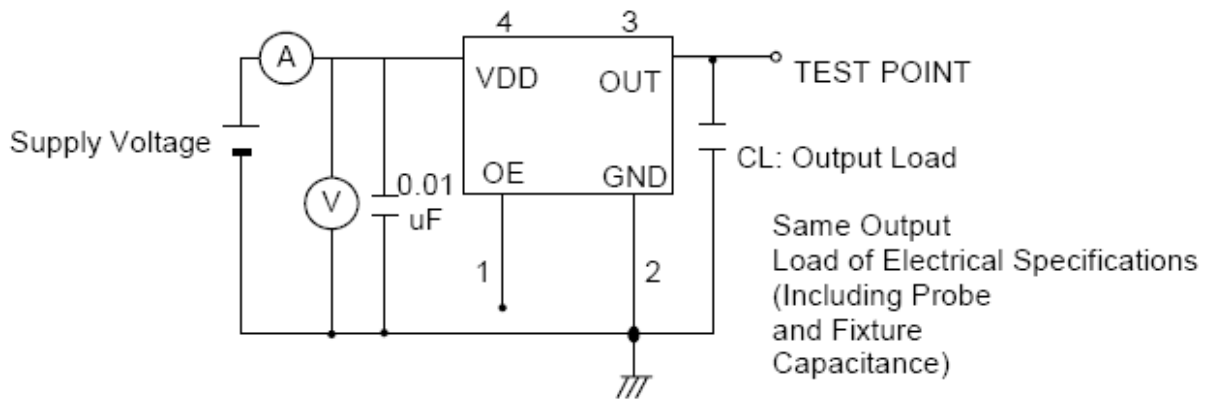


Note1: Tolerance ±0.2mm without mark

Note2: The first two xx representative: week After two xx representative: year

Note3: Referential Weight 0.2g

3、Test Diagram



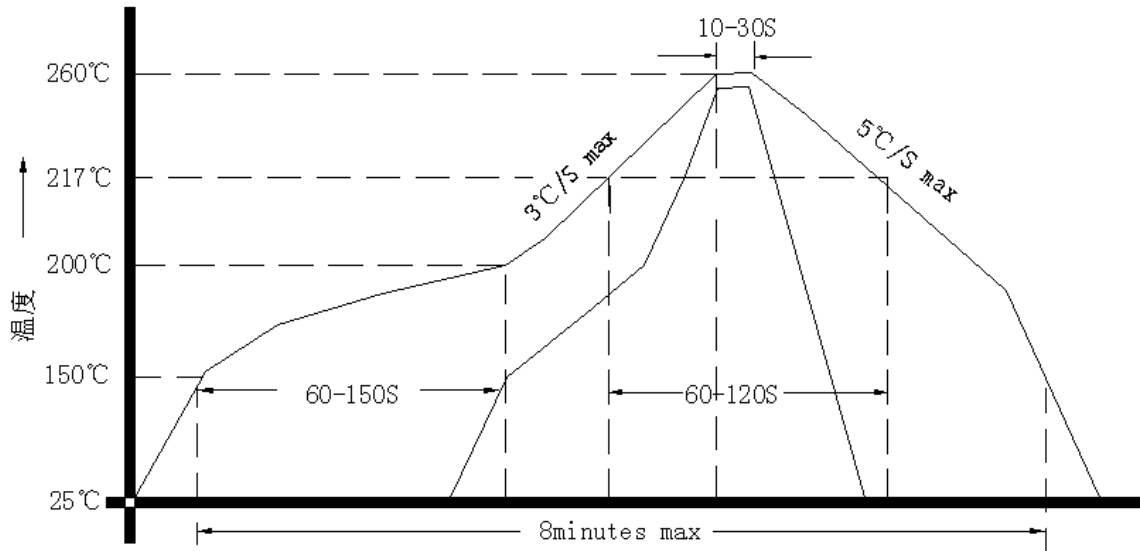
Control input (output enable/disable)

Logic 1 or open on pad 1: Oscillator output

Logic 0 on pad 1 : Disable output to high impedance



4、Reflow Soldering Curve (RoHS)



5、Package: Tape & Reel (mm)

