

Customer Code : _____

DATASHEET

DAPU P/N: **DPBG15625002**

Plot			The Label
Drew	Audited	Approved	Stamp, please! Thanks!
Date: 2019.09.12			

Guangdong Dapu Telecom Technology Co.,Ltd

Bldg16,.N.Ind.Zone,SSL Industry Park, Dongguan City, Guangdong Province, China

TEL: 0086-0769-88010888 FAX: 0086-0769-81800098

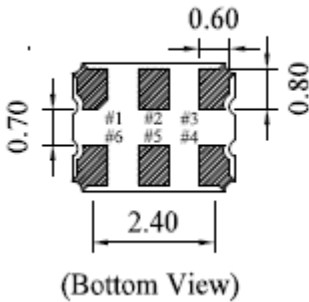
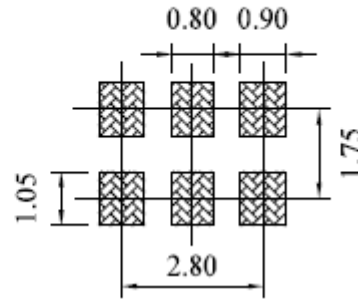
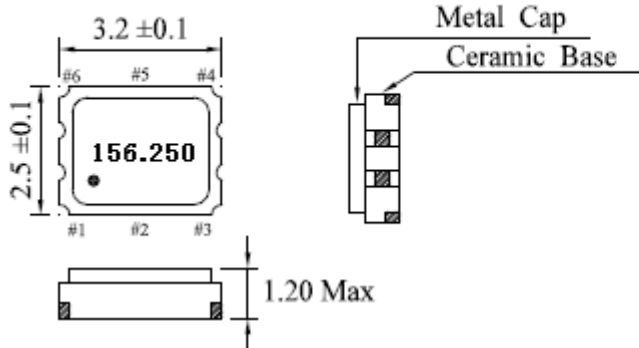


1、Electrical Parameters

MODEL: DPBG15625002							
No.	Parameters	SYM.	Electrical Spec.				Notes
			Min.	Typ.	Max.	Units	
1	Nominal Frequency	FL	156.250			MHz	
2	Output Waveform		LVPECL				
3	Supply Voltage		3.135	3.3	3.465	V	
4	Frequency Stability	F-stab	-50		+50	$\times 10^{-6}$	
5	Operating Temperature	T-opr	-40	~	+85	$^{\circ}\text{C}$	
6	Storage Temperature	T-stg	-55	~	+125	$^{\circ}\text{C}$	
7	Current Consumption	Icc	-		70	mA	
8							
9	Rise/Fall Time	Tr、 Tf			1	nS	20%~80% output swing level
10	Aging per year		-3		+3	$\times 10^{-6}$	@25 $^{\circ}\text{C}$
11	Symmetry		45		55	%	
12	Input Voltage High		2.275	-		V	
13	Input Voltage Low			-	1.680	V	
14	Output Load		50			Ω	VDD-2.0V
15	Phase Jitter RMS			1		pS	12KHz-20MHz
16	Start-up time				10	ms	
17	Vod		600		1000	mV	



2、Mechanical Structure(mm)

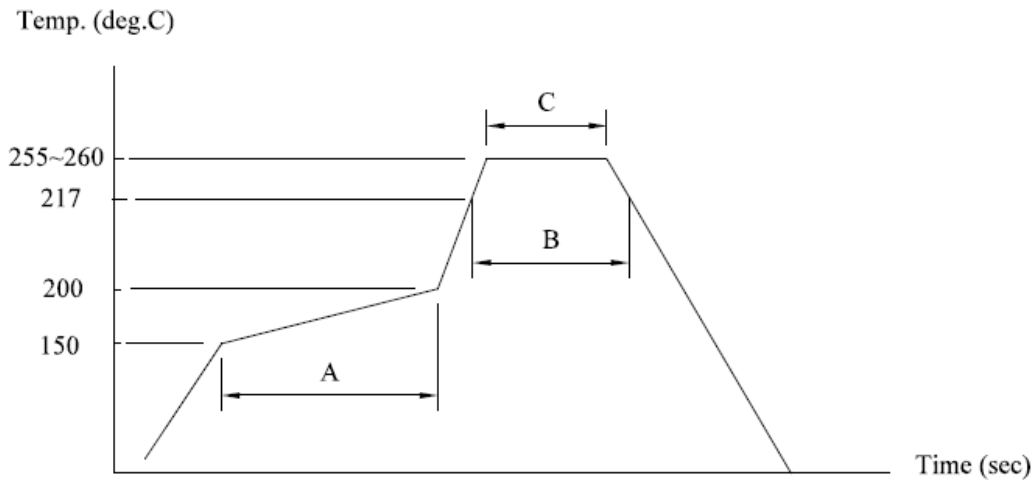


Pin Connections

- # 1 : INH
- # 2 : Nc
- # 3 : Gnd
- # 4 : Output
- # 5 : Complementary Output
- # 6 : V_{dd}

INH Function	
#1	#4 , #5(Output)
Open	Active
"H"Level	Active
"L"Level	High Z(Oscillation Stopped)

3、Soldering reflow

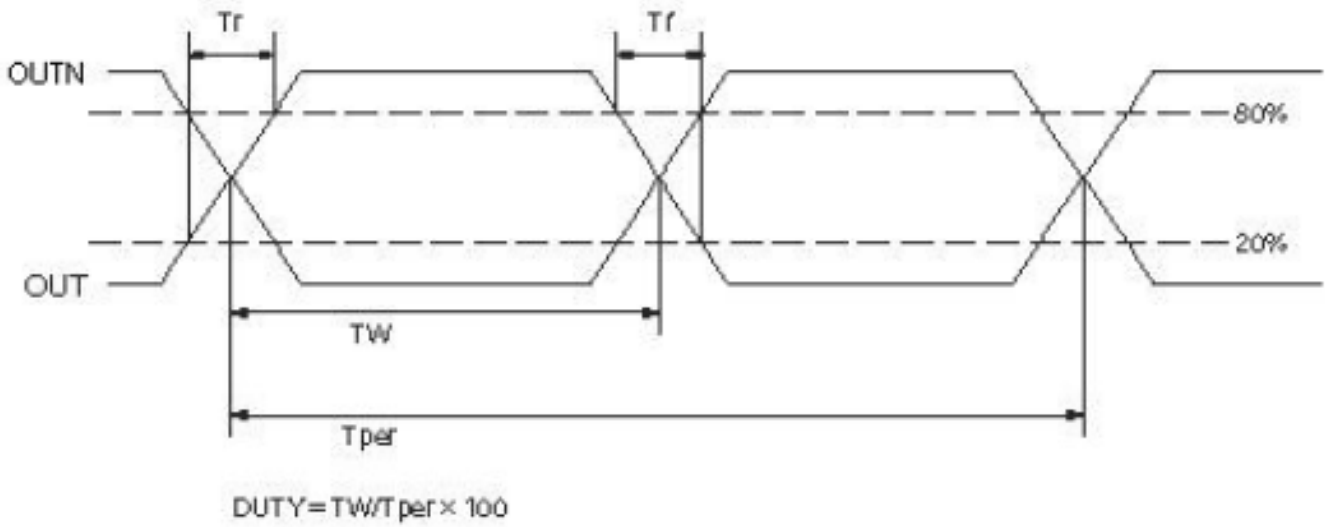


- (A)→Preheating area : 150~200°C, 60~120sec.
- (B)→Heating area : 217°C, 60~150sec.
- (C)→Peak temperature : 255~260°C, 30sec. Max.
- Ramp-up rate (217→260°C) : 3°C/sec. Max.
- Ramp-down rate (260→217°C) : 6°C/sec. Max.
- Time 25°C→260°C : 480sec. Max.

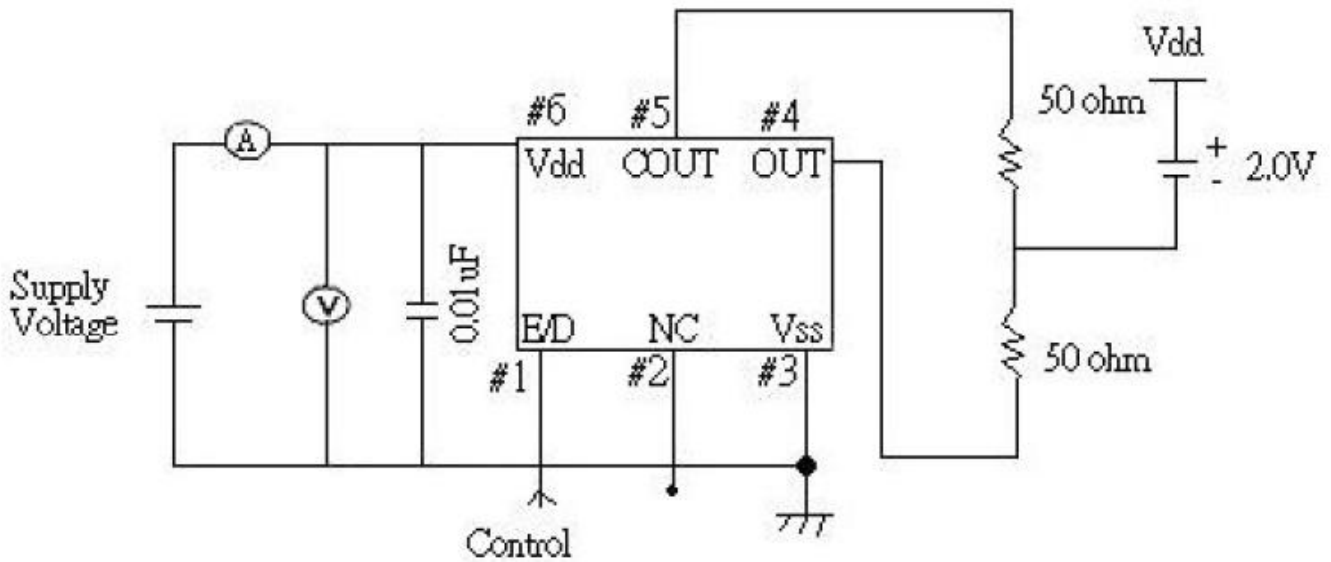
*Referance JEDEC J-STD-020



4、 Output Waveform



5、 Test Circuit





6、 Package: Tape & Reel (mm)

