

Customer Code : _____

DATASHEET

DAPU P/N: T11A-A429-23.90MHz

Customer P/N: _____

| DAPU | | | Customer Approval |
|------------------|---------|----------|------------------------|
| Drew | Audited | Approved | Stamp, please! Thanks! |
| | | | |
| Date: 2019.07.30 | | | |

Guangdong Dapu Telecom Technology Co.,Ltd

Bldg13-16,.N.Ind.Zone,SSL Industry Park, Dongguan City, Guangdong Province, China

TEL: 0086-0769-88010888 FAX: 0086-0769-81800098

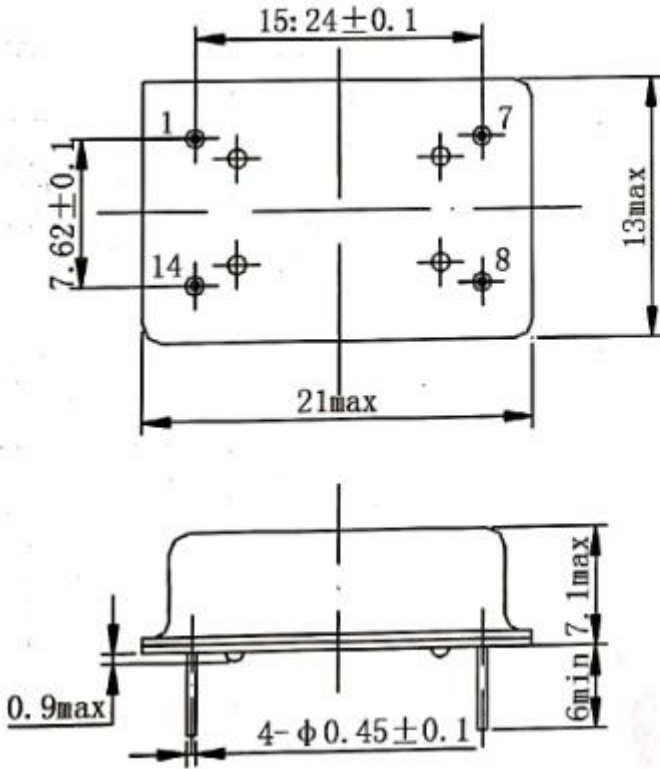


1. Electrical Parameters

| MODEL: T11A-A429-23.90MHz | | | | | | |
|---------------------------|--|---|------|------|--------------------|--|
| Item | Description | Parameters | | | Unit | Test Condition |
| | | Min. | Typ. | Max. | | |
| Output | Frequency | 23.90 | | | MHz | |
| | Output Waveform | Sine Wave | | | | |
| | Level | 5 | 6 | 7 | dBm | $O_{load}=50\Omega$ |
| | Harmonics Suppression | | | -30 | dBc | |
| | Spurious Suppression | | | -60 | dBc | |
| | Load | 50 | | | Ω | |
| Frequency Stabilities | Frequency Tolerance vs. Operating Temperature Range | -4.0 | | +4.0 | $\times 10^{-6}$ | T_A varied from -45°C to 75°C , measurement referenced to frequency observed with $T_A=25^{\circ}\text{C}$, $V_{cc}=5.0\text{V}$, $O_{load}=50\Omega$, temperature variable speed less than 2°C per minute. |
| | Initial Frequency Tolerance | -3.0 | | +3.0 | $\times 10^{-6}$ | Measurement referenced to frequency observed with $T_A=25^{\circ}\text{C}$, $V_{cc}=5.0\text{V}$, within 30 days after ex-works. |
| | Aging Tolerance 1 Year | -1.0 | | +1.0 | $\times 10^{-6}$ | $T_A=25^{\circ}\text{C}$, $V_{cc}=5.0\text{V}$, and after 1h of operation. |
| Power Supply | Current Consumption | | | 50 | mA | @ 25°C , $V_{cc}=5.0\text{V}$, $O_{load}=50\Omega$. |
| | Supply Voltage | 4.75 | 5.0 | 5.25 | V | |
| Environmental Conditions | Operable Temperature | -45 | | +75 | $^{\circ}\text{C}$ | |
| | Storage Temperature | -55 | | +85 | $^{\circ}\text{C}$ | |
| | ESD Level | Human Body Model, class2: 2000V to 4000V; ANSI/ESDA/JEDEC JS-001-2010. | | | | |
| | | Machine Model, class B: 200V to 400V; ANSI/ESDA/JEDEC JS-001-2010. | | | | |
| | Moisture Sensitivity Level | Not humidity sensitive. | | | | |
| | Vibration | Test Condition: 0.75mm ;acceleration:10g;10Hz~2000Hz, one cycle per 30 min, test 2 hour. (3 times for each 3 directions X , Y , Z) .IEC 68-2-06 Test Fc. | | | | |
| Shock | 100g; 6ms; half sine wave (3 times for each 3 directions X , Y , Z),IEC 68-2-27 Test Ea/Severity 50A. | | | | | |

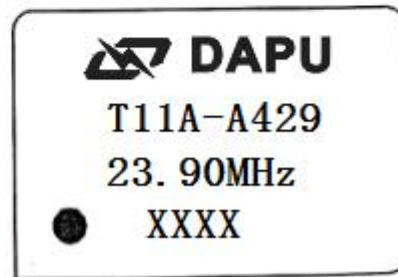


2. Mechanical Structure(mm)



| 引脚 (PIN) | 功能 (FUNCTION) |
|----------|---------------|
| 1 | 空脚 (NC) |
| 7 | 接地 (GND) |
| 8 | 输出 (OUT) |
| 14 | 电源 (VCC) |

标识

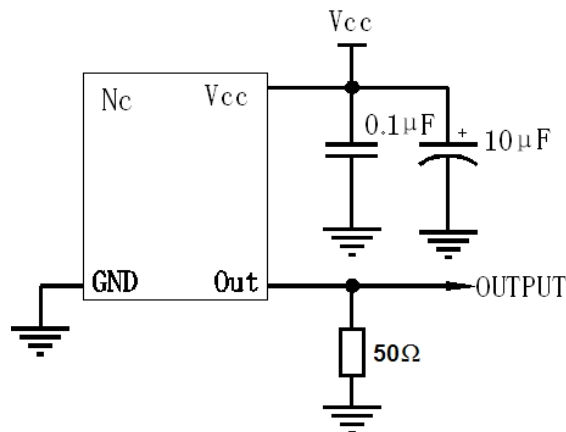


Note1: The first two xx representative: week
After two xx representative: year

Note2: Referential weight 3.8g

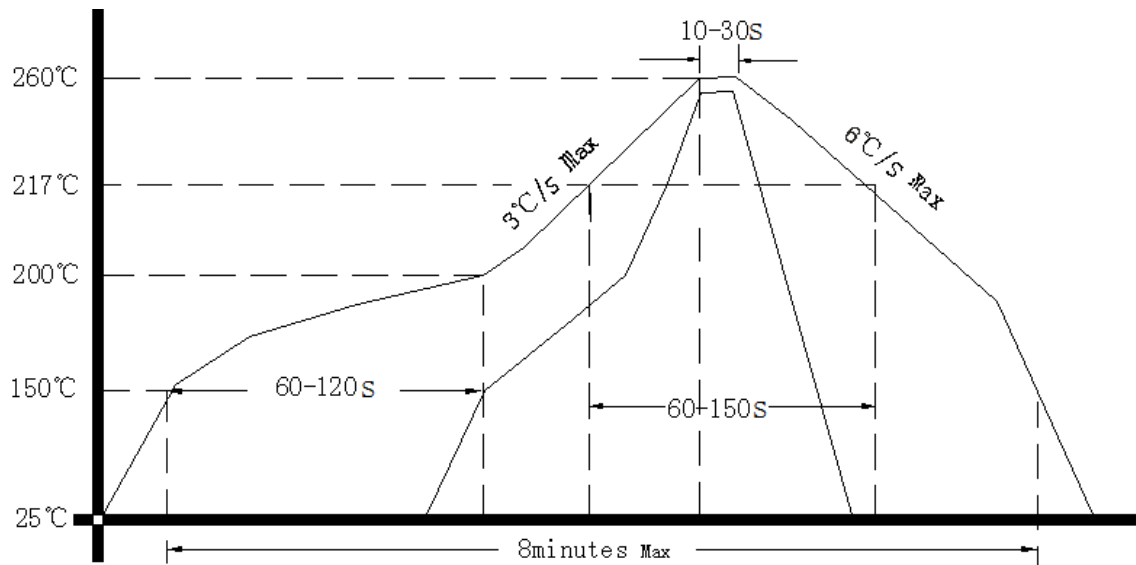
Note3: NC is not connect

3. Test circuit





4. Reflow Soldering Curve (RoHS)



5. Package: PVC Tube,10pcs (mm)

