

Travelling Merchant: _____

DATASHEET

Standard: DP7X19200003

Plot			The Label
Drew	Audited	Approved	
Date: 2018.05.21			Stamp, please! Thanks!

Guangdong Dapu Telecom Technology Co.,Ltd

Bldg13-16,.N.Ind.Zone,SSL Industry Park, Dongguan City, Guangdong Province, China

TEL: 0086-0769-88010888 FAX: 0086-0769-81800098



1、 Electrical Parameters

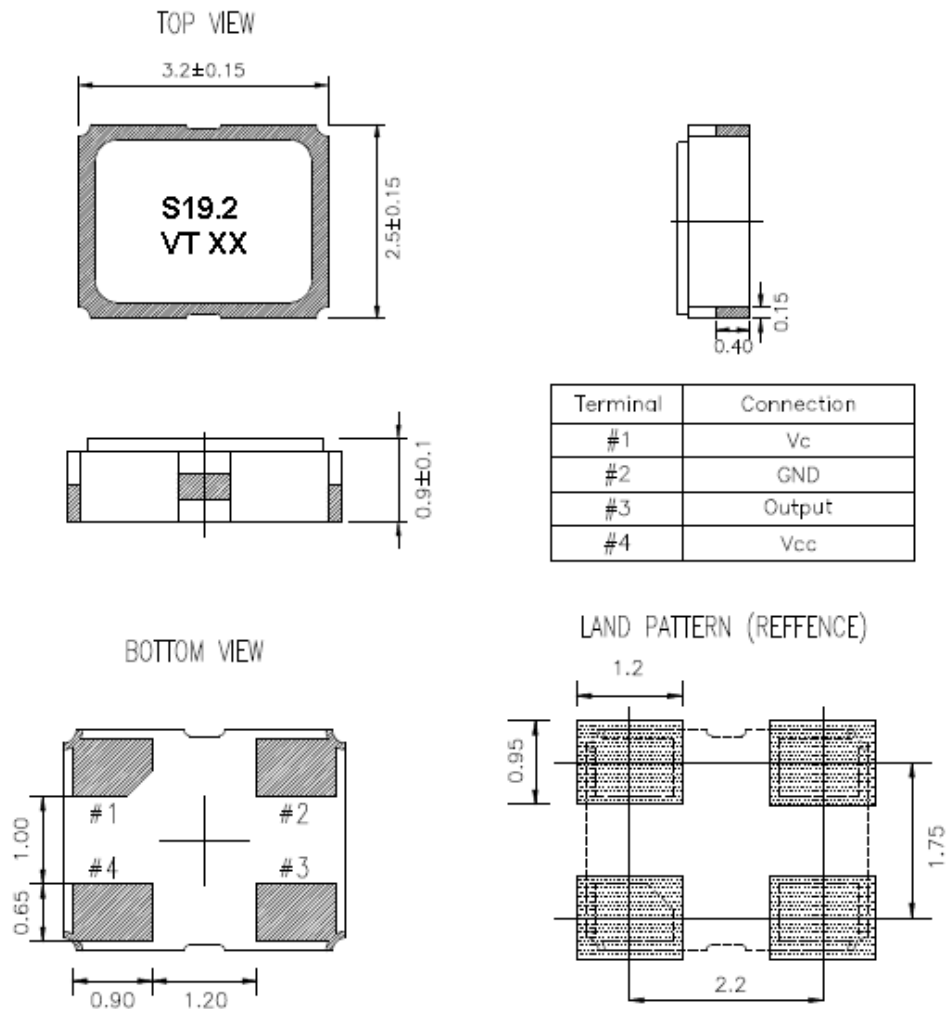
MODEL: DP7X19200003							
No.	Parameters	SYM.	Electrical Spec.				Notes
			Min.	Typ.	Max.	Units	
1	Nominal Frequency	FL	19.20			MHz	
2	Output Waveform	-	Clipped Sine				
4	Frequency Tolerance	dF/F0	-1.5	-	+1.5	$\times 10^{-6}$	at 25°C ± 3°C Sixty minutes after reflow
5	Vs. Temperature		-2		+2	$\times 10^{-6}$	
6	Vs. Supply Voltage	dF/F25	-0.2		+0.2	$\times 10^{-6}$	
7	Vs. Load	dF/F25	-0.2		+0.2	$\times 10^{-6}$	
8	Supply Voltage	dF/F25	2.6	2.8	3.5	V	
9	Control Voltage		0.4	1.4	2.4	V	
10	Pulling Range	dF/F25	±5		±12	$\times 10^{-6}$	@1.4V ± 1V
11	Linearity				10	%	
12	Load(Impedance)	R	9	10	11	KΩ	
13	Load(Capacitance)	C	9	10	11	pF	
14	Temperature slope		-0.15		0.15	$\times 10^{-6}/^{\circ}\text{C}$	-10°C ~ 60°C
15			-0.3		0.3	$\times 10^{-6}/^{\circ}\text{C}$	@-30°C ~ -10°C, +60°C ~ +85°C
16	Operating Temperature	-	-30	~	+85	°C	
17	Aging	dF/F25	-1	-	+1	$\times 10^{-6}$	1st Year
18	Current Consumption	Icc			1.8	mA	
19	Output level	Vp-p	0.8			V	
20	Duty Cycle		40	50	60	%	
21	Storage Temperature Range	-	-40	~	+85	°C	
22	Star Time				2	ms	@90% of Vp-p
					3	ms	@within ±0.5ppm
23	Harmonic				-5	dBc	
24	Phase Noise	C/N			-86	dBc/Hz	@10Hz
					-110		@100Hz
					-130		@1KHz
					-145		@10KHz
					-145		@100KHz

dF/Fo: Frequency Deviation Refer to Center Frequency
dF/F25: Frequency Deviation Refer to 25 °C Frequency



25	ESD Level	Human Body Model,class2: 2000V to 4000V; ANSI/ESDA/JEDEC JS-001-2010
		Machine Model, class B: 200V to 400V; ANSI/ESDA/JEDEC JS-001-2010
26	Moisture Sensitivity Level	Level 3
27	Vibration	Test Condition: 0.75mm ;acceleration: 10g;10Hz~2000Hz, one cycle per 30 min, test 2 hour. (3 times for each 3 directions X , Y , Z). IEC 68-2-06 Test Fc.
28	Shock	100g; 6ms; half sine wave (3 times for each 3 directions X , Y , Z),IEC 68-2-27 Test Ea/Severity 50A.

2、 Mechanical Structure(mm)



Note1: Tolerance ±0.20mm without mark

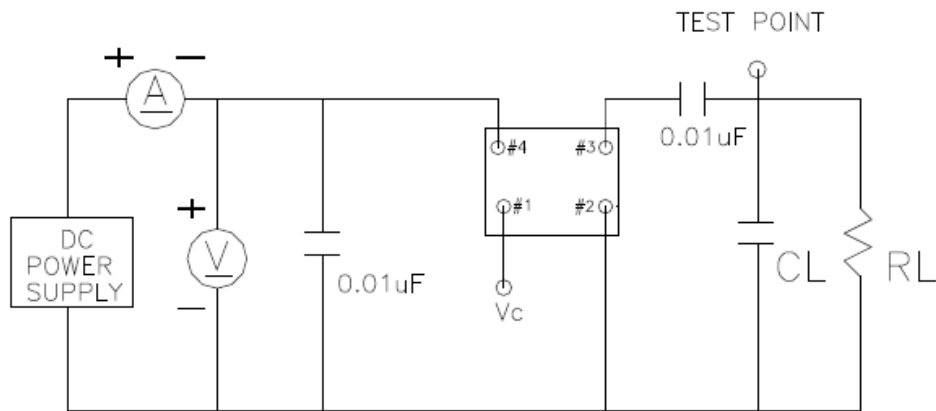
Note2: The first one x representative: last 1digit of the year
After one x representative: code

MONTH : 1 2 3 4 5 6 7 8 9 10 11 12

CODE : A B C D E F G H J K L M

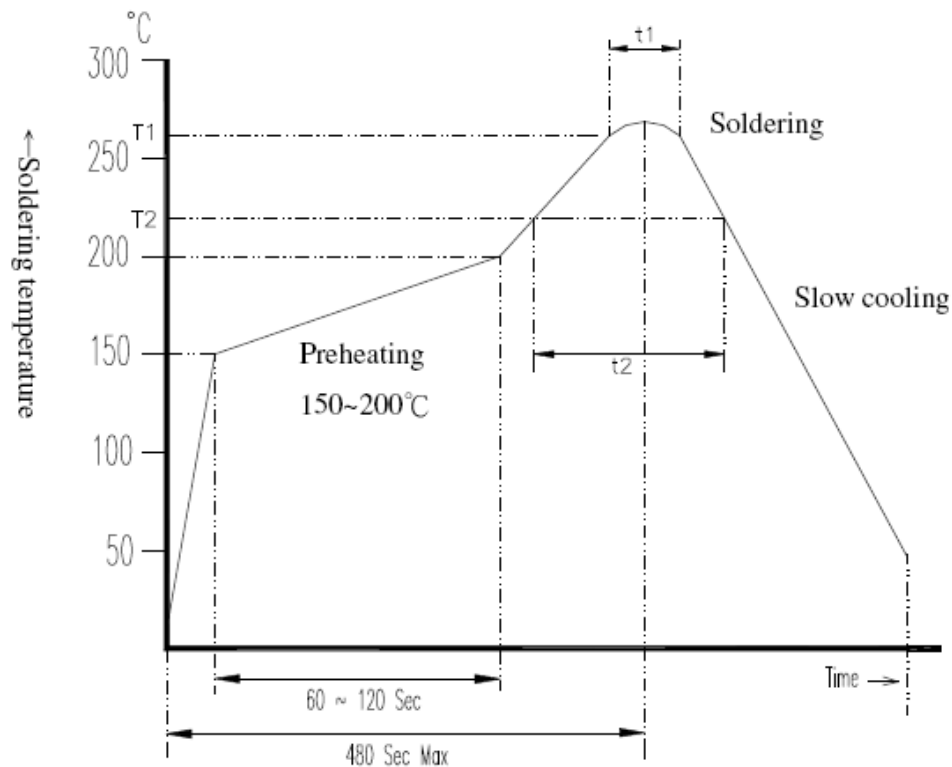


3、 Test Circuit



CL/RL:Refer to Load(Impedance) & Load(Capacitance)listed on Electrical Characteristics(including probe and jig capacitance)

4、 Suggested reflow profile



Application\Temperature Time	T1 / t1	T2 / t2
Lead Free	260±5°C / 10±5 Sec Max	217°C Min / 60~150 Sec
Non Lead Free	240±5°C / 10±5 Sec Max	183°C Min / 60~150 Sec



5、 Package: Tape & Reel (mm)

