

Travelling Merchant: _____

DATASHEET

Standard: DPBA15552001

Plot			The Label
Drew	Audited	Approved	Stamp, please! Thanks!
Date: 2017.11.07			

Guangdong Dapu Telecom Technology Co.,Ltd

Bldg13-16,.N.Ind.Zone,SSL Industry Park, Dongguan City, Guangdong Province, China

TEL: 0086-0769-88010888 FAX: 0086-0769-81800098

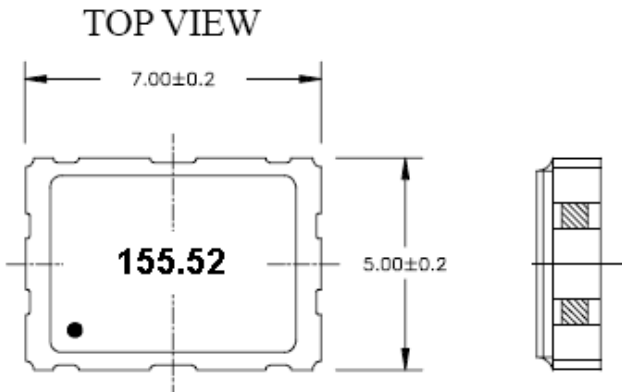


1、 Electrical Parameters

MODEL: DPBA15552001							
No	Parameters	SYM.	Electrical Spec.				Notes
			Min.	Typ.	Max.	Units	
1	Nominal Frequency	FL	155.52			MHz	
2	Output Waveform	-	LVPECL				
3	Current Consumption	I _{cc}			45	mA	
4	Standby Current	I _{st}			20	μA	
5	Supply Voltage	V _{cc}	2.97	3.3	3.63	V	
6	Rise/Fall Time (10%~90%)	-	-	-	0.4	nS	@ 20%~80% output swing level
7	Output Load	-	47.5	50	52.5	Ω	a terminus to V _{cc} -2V
8	Frequency Stability	-	-50	~	+50	× 10 ⁻⁶	Include Freq. Tolerance, Temp, Supply voltage, Load, Aging, Shock, Vibration.
9	Operating Temperature Range	-	-40	~	+85	°C	
10	Storage Temperature	-	-55	~	+125	°C	
11	Tri-state(standby function)	V _{ih}	2.31	-	V _{dd}	V	Oscillation Enable
12	Tri-state(standby function)	V _{il}	GND	-	0.99	V	Oscillation Disable
13	Current Consumption	-	-	-	90	mA	
14	Output Level Logic 1	V _{oh}	2.275	-	2.42	V _{cc}	
15	Output Level Logic 0	V _{ol}	1.49	-	1.68	V	
16	Duty Cycle	-	45	50	55	%	@ 50% output swing level
17	Start Time	-	-	-	10	mS	
18	Output Enable Time	t _{ena}			2	mS	
19	Output Disable Time	t _{dis}	-		200	nS	
20	Phase jitter				0.13	ps	Phase Jitter φ _j Intergrated 12KHz to 20MHz
21	ESD Level	Human Body Model,class2: 2000V to 4000V; ANSI/ESDA/JEDEC JS-001-2010.					
		Machine Model, class B: 200V to 400V; ANSI/ESDA/JEDEC JS-001-2010.					
22	Moisture Sensitivity Level	Level 2.					
23	Vibration	Test Condition: 0.75mm ;acceleration:10g;10Hz~2000Hz, one cycle per 30 min, test 2 hour. (3 times for each 3 directions X , Y , Z) .IEC 68-2-06 Test Fc.					
24	Shock	100g; 6ms; half sine wave (3 times for each 3 directions X , Y , Z),IEC 68-2-27 Test Ea/Severity 50A.					

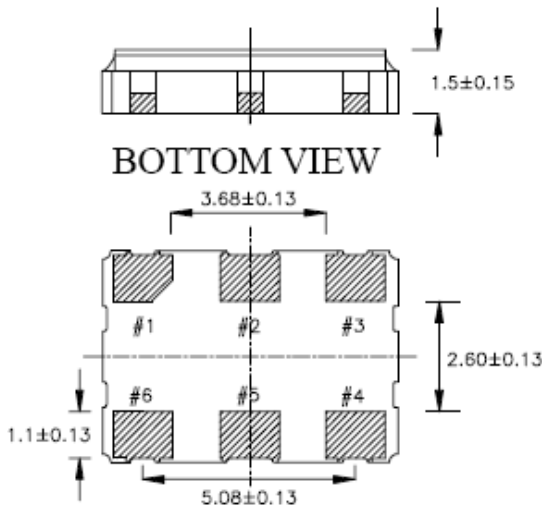


2、Mechanical Structure(mm)



Standard

Terminal	Connection
#1	Tri-state or N.C
#2	NC
#3	GND
#4	OUT
#5	OUTN
#6	+Vcc

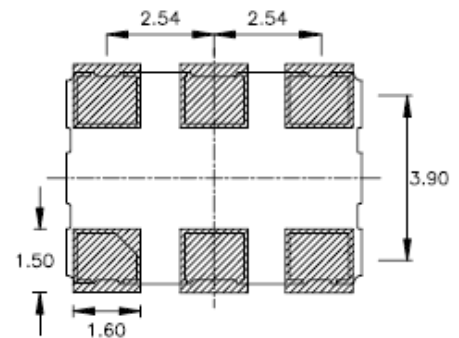


Option

Terminal	Connection
#1	NC
#2	Tri-state or N.C
#3	GND
#4	OUT
#5	OUTN
#6	+Vcc

Tri-state Function	
Tri-state pin	Output
High or Floating	Active
Low	Hi-Impedance

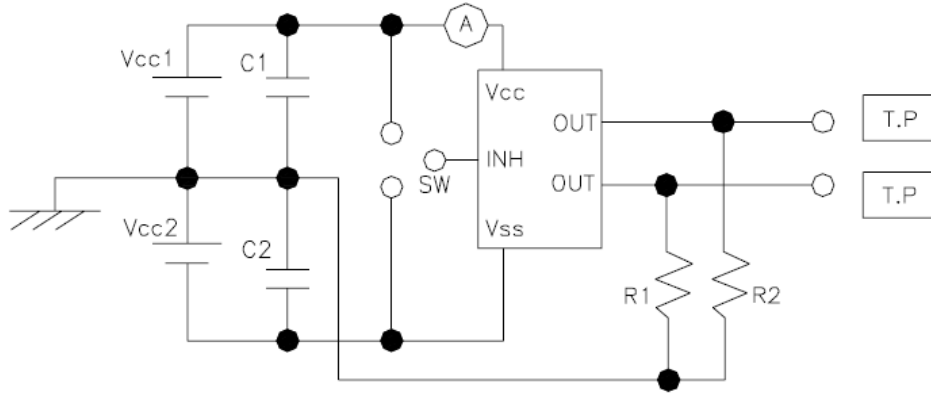
LAND PATTERN (REFERENCE)



Note1: Tolerance ±0.2mm

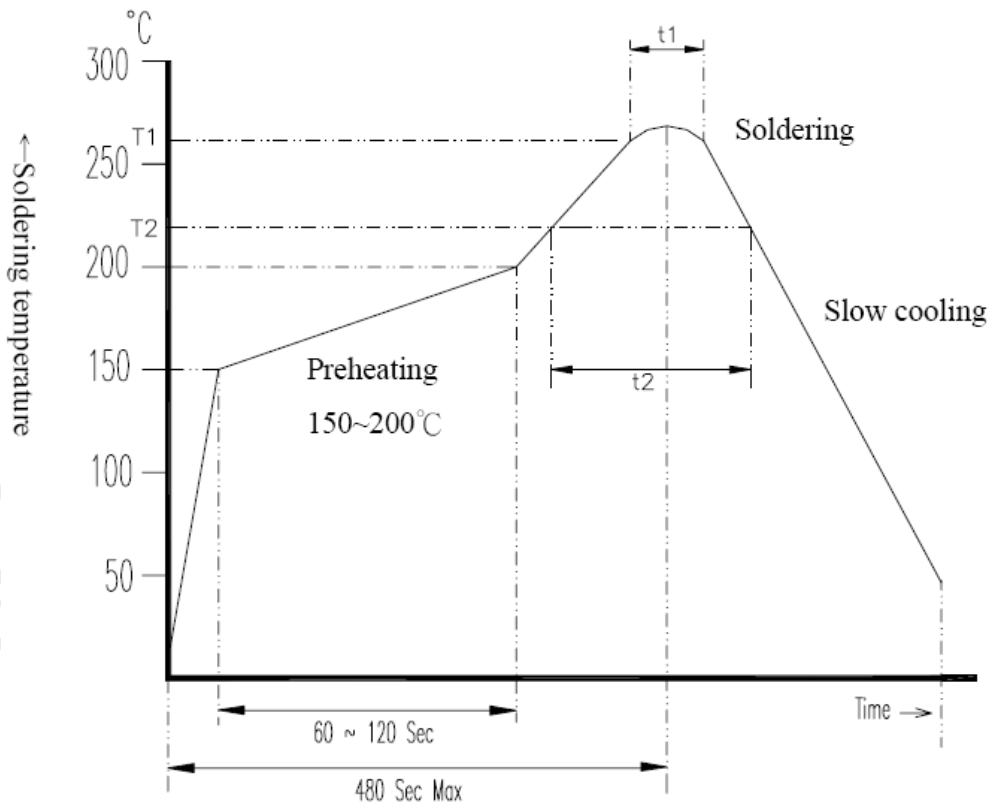


3、 Test Circuit



*3.3V : Vcc1=2.0V Vcc2=-1.3V C1=C2=0.1 μ F R1=R2=50 Ω (Coaxial Cable Z0=50 Ω)
 2.5V : Vcc1=2.0V Vcc2=-0.5V C1=C2=0.1 μ F R1=R2=50 Ω (Coaxial Cable Z0=50 Ω)

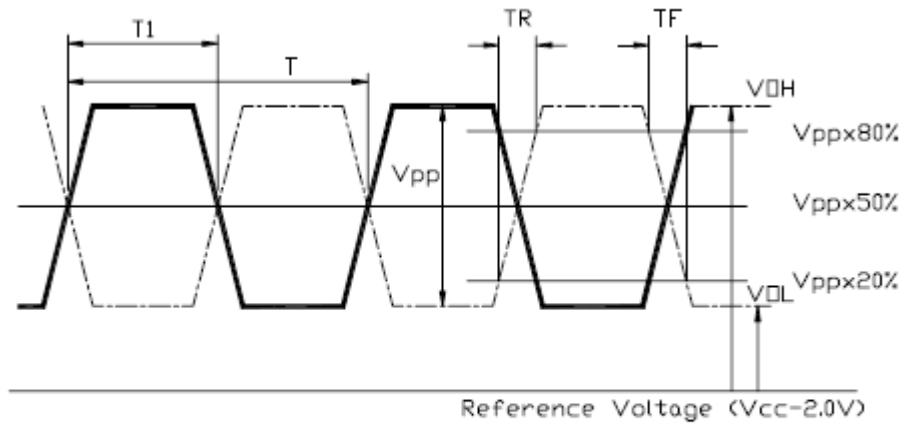
4、 Reflow Soldering Curve (RoHS)



Application\Temperature Time	T1 / t1	T2 / t2
Lead Free	260 \pm 5 $^{\circ}$ C / 10 \pm 5 Sec Max	217 $^{\circ}$ C Min / 60~150 Sec
Non Lead Free	240 \pm 5 $^{\circ}$ C / 10 \pm 5 Sec Max	183 $^{\circ}$ C Min / 60~150 Sec



5、 Output Waveform



*DUTY = $T1 / T \times 100(\%)$, 50% typ. $T_r = T_f = 500$ psec typ.

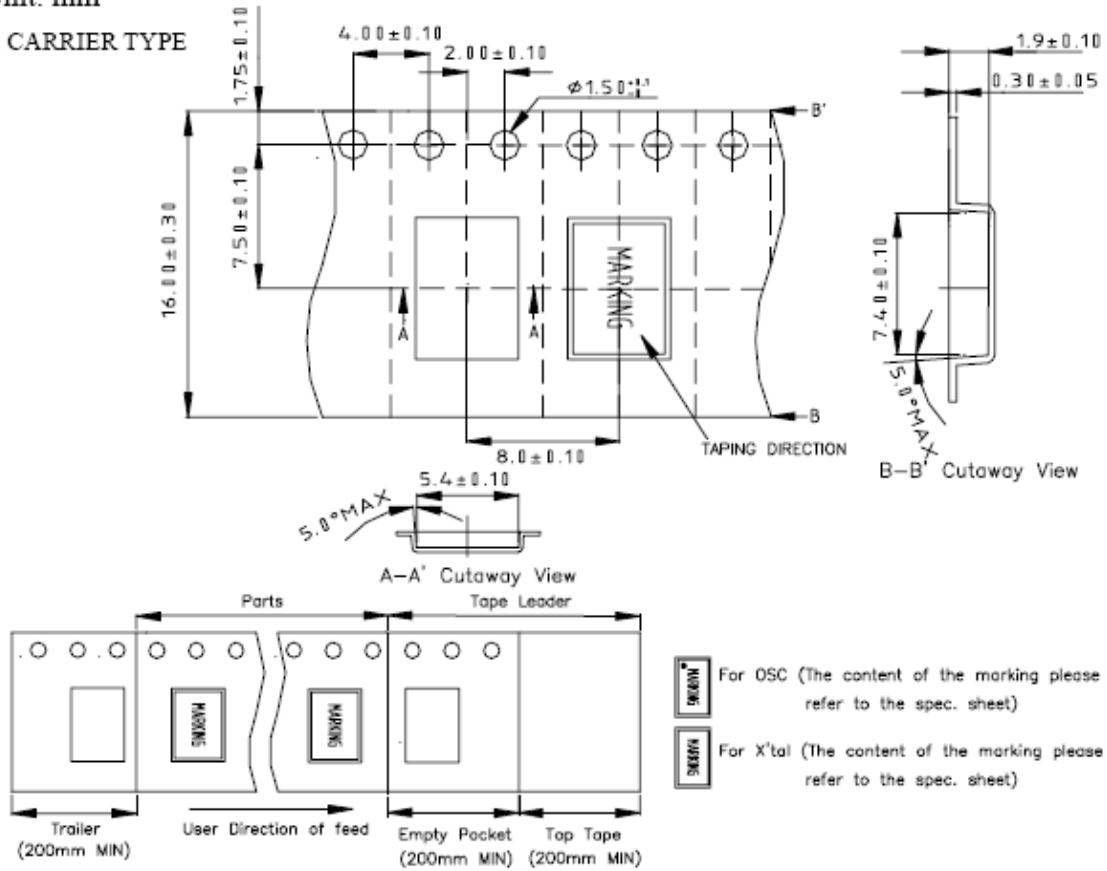
$V_{ol} = 0.30V$ typ. $V_{oh} = 1.05V$ typ. $V_{pp} = 750mV$ typ.



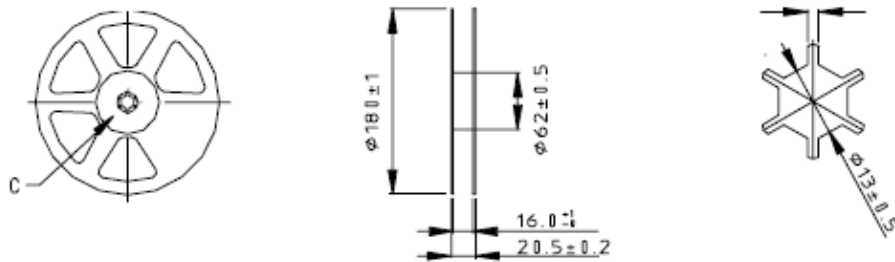
6、 Package: Tape & Reel (mm)

Unit: mm

1. CARRIER TYPE



2. REEL : 1000PCS



3. LABEL

