

Customer Code: _____

DATASHEET

DAPU P/N: DP6U50000002

| DAPU | | | Customer Approval |
|------------------|---------|----------|------------------------|
| Drew | Audited | Approved | Stamp, please! Thanks! |
| | | | |
| Date: 2017.10.20 | | | |

Guangdong Dapu Telecom Technology Co.,Ltd

Bldg 16,.N.Ind.Zone,SSL Industry Park, Dongguan City, Guangdong Province, China

TEL: 0086-0769-88010888 FAX: 0086-0769-81800098

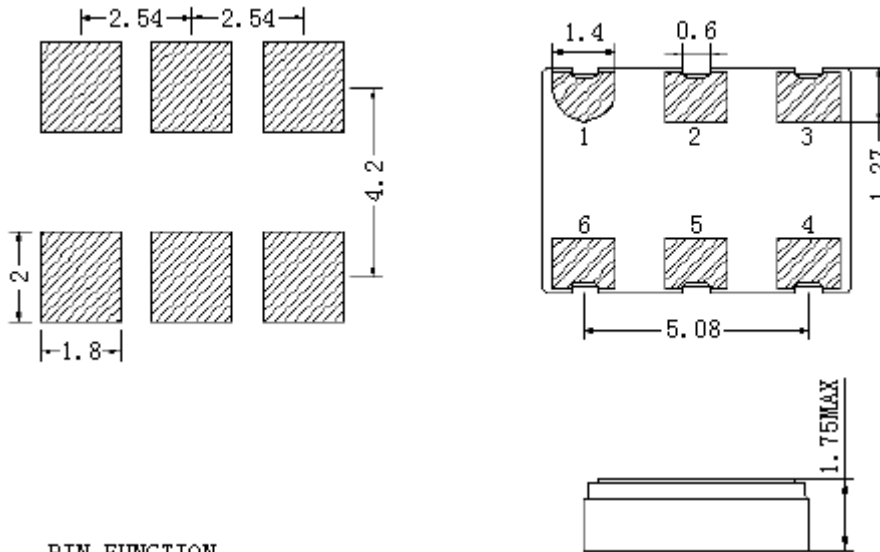


1、 Electrical Parameters

| MODEL: DP6U5000002 | | | | | | | |
|--------------------|----------------------------|--|------------------|------|----------|-----------------------------|----------------|
| No | Parameters | SYM. | Electrical Spec. | | | | Notes |
| | | | Min. | Typ. | Max. | Units | |
| 1 | Nominal Frequency | FL | 50.00 | | | MHz | |
| 2 | Frequency Stability | - | -25 | | +25 | $\times 10^{-6}$ | -40°C~85°C |
| 3 | Absolute Pull Rang | | -50 | | +50 | $\times 10^{-6}$ | |
| 4 | Operating Temperature | Topr | -40 | ~ | 85 | °C | |
| 5 | Storage Temperature | Tstg | -55 | ~ | 125 | °C | |
| 6 | VC Input Impedance | - | 2000 | | | KΩ | |
| 7 | Supply Voltage | VDD | 3.3 | | | V | |
| 8 | Control Voltage Range | - | 0.3/3.0 | | | V | |
| 9 | Input Current | Icc | - | - | 20 | mA | |
| 10 | Enable Control | - | Yes | | | - | Pad 2 |
| 11 | Output Load: CMOS | CL | 15 | | | pF | |
| 12 | Output Voltage High | VoH | | - | 0.1Vdd | V | |
| 13 | Output Voltage Low | VoL | 0.9Vdd | - | | V | |
| 14 | Rise /Fall Time | Tf | | | 5 | ns | 0.1Vdd ~0.9Vdd |
| 15 | Current | | | | 10 | mA | |
| 16 | Symmetry (Duty ratio) | TH/T | 40 | ~ | 60 | % | |
| 17 | Start-up time | | | | 5 | ms | |
| 18 | Aging | - | ±3 | | | $\times 10^{-6}/\text{yr.}$ | Year at 25°C |
| 19 | Frequency Control Range | - | ±100 | - | - | $\times 10^{-6}$ | Vc=1.65±1.5V |
| 20 | Linearity | - | | | 10 | % | |
| 21 | Period Jitter | | 40 | | | Ps | |
| 22 | ESD Level | Human Body Model,class2: 2000V to 4000V; ANSI/ESDA/JEDEC | | | | | |
| | | Machine Model, class B: 200V to 400V; ANSI/ESDA/JEDEC JS-001-2010. | | | | | |
| 23 | Moisture Sensitivity Level | Level 2. | | | | | |
| 24 | Vibration | Test Condition: 0.75mm ;acceleration:10g;10Hz~2000Hz, one cycle per 30 min, test 2 hour. (3 times for each 3 directions X , Y , Z) .IEC 68-2-06 Test Fc. | | | | | |
| 25 | Shock | 100g; 6ms; half sine wave (3 times for each 3 directions X , Y , Z),IEC 68-2-27 Test Ea/Severity 50A. | | | | | |
| 26 | Full Package Storage | Relative humidity (%) | | | 20%~70% | | |
| | | Temperature (°C) | | | -10~35°C | | |

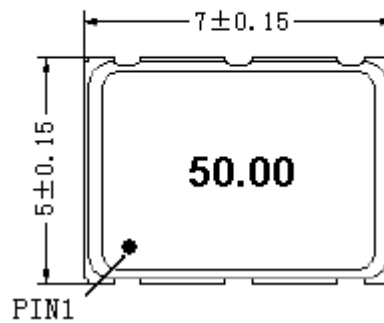


2、 Mechanical Structure(mm)



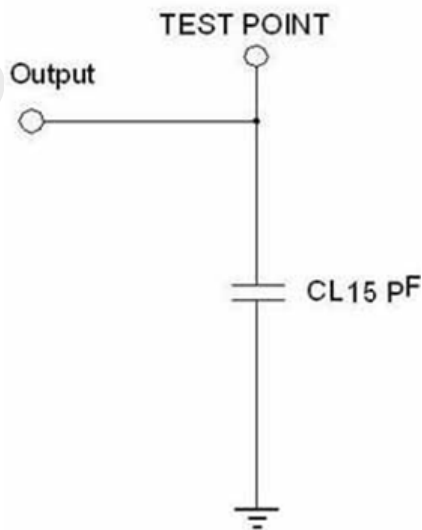
PIN FUNCTION

| PIN | FUNCTION |
|-----|-----------------|
| 1 | Voltage Control |
| 2 | Tristate |
| 3 | GND |
| 4 | Output |
| 5 | Not Connect |
| 6 | Supply Voltage |



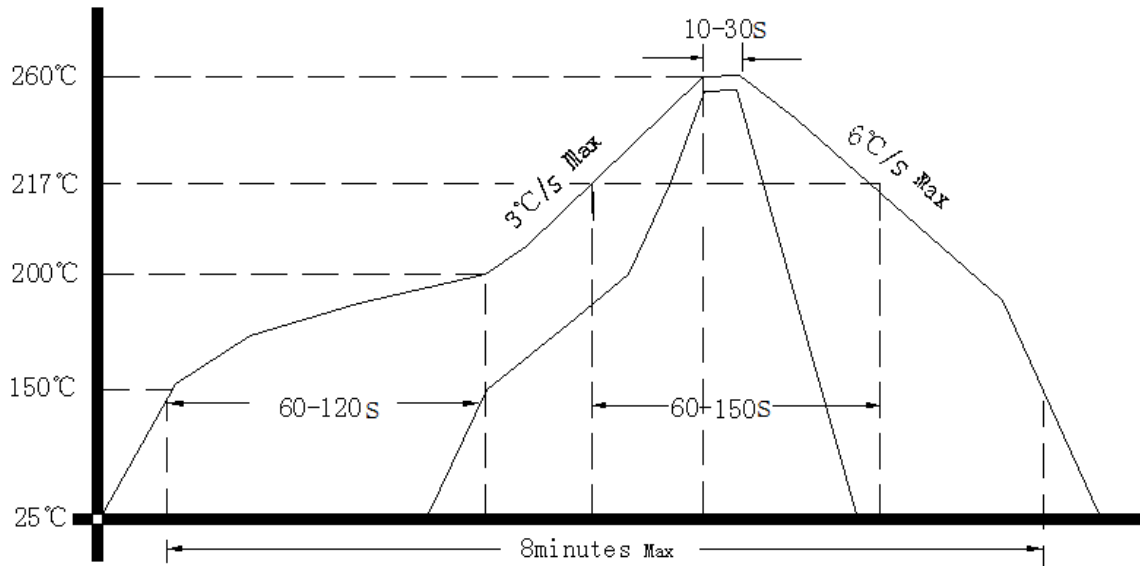
Note1: Tolerance ±0.20mm

3、 Test Circuit





4、 Reflow Soldering Curve (RoHS)



5、 Package: Tape & Reel (mm)

