

Customer Code : \_\_\_\_\_

# DATASHEET

DAPU P/N : V756-C312-100.00MHz

Customer P/N: \_\_\_\_\_

DAPU			Customer Approval
Drew	Audited	Approved	Stamp, please! Thanks!
Date: 2017.08.09			

## Guangdong Dapu Telecom Technology Co.,Ltd

Bldg13-16,.N.Ind.Zone,SSL Industry Park, Dongguan City, Guangdong Province, China

TEL: 0086-0769-88010888 FAX: 0086-0769-81800098





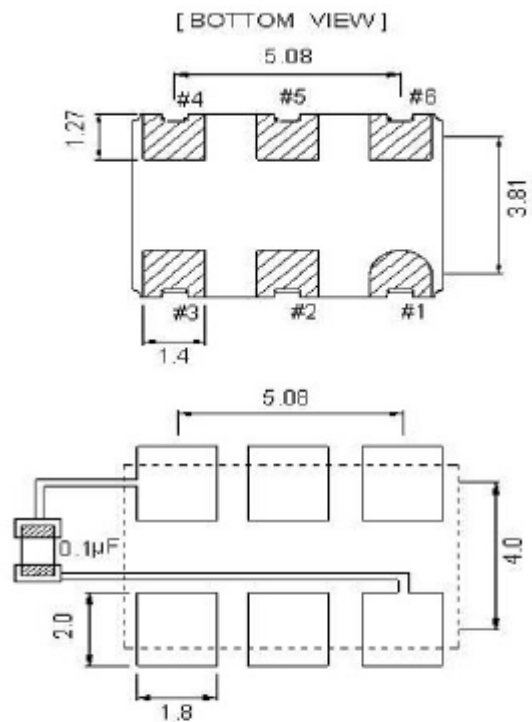
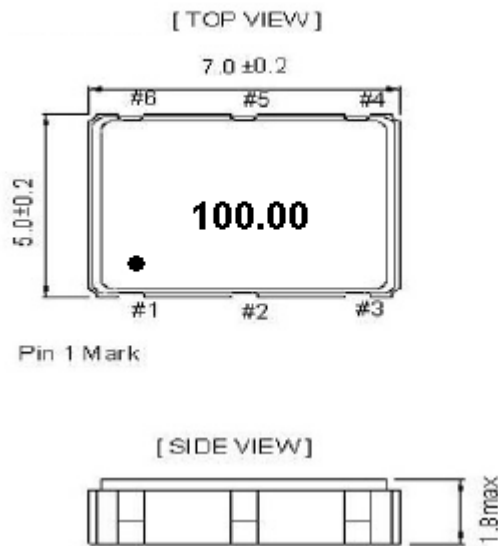
## 1、 Electrical Parameters

Parameters	SYM	Electrical Spec.				Notes
		Min.	Typ.	Max.	Units	
<b>Frequency Stabilities</b>						
Nominal Frequency	F <sub>N</sub>	100.00			MHz	
Overall Stability		-50		+50	× 10 <sup>-6</sup>	Frequency stability includes frequency tolerance@25°C, frequency stability vs. temperature range, voltage variance, load variance and first year aging.
<b>RF Output</b>						
Output Waveform		HCMOS				
Load	I <sub>OUT</sub>	15			pF	
Output Voltage High	V <sub>OH</sub>	90%vdd			V	
Output Voltage Low	V <sub>OL</sub>			10%vdd	V	
Rise / Fall Time	T <sub>r</sub> / T <sub>f</sub>			2	ns	10%-90%
Symmetry	SYM	45	50	55	%	@50%
Start-up Time	T <sub>S</sub>			5	ms	
<b>Supply Voltage</b>						
Supply Voltage	V <sub>CC</sub>	2.97	3.3	3.63	V	
Input Current	I <sub>CC</sub>			40	mA	
<b>Control Voltage</b>						
Control Voltage Rang	V <sub>C</sub>	0.3		3.0	V	V <sub>C</sub> =1.65V
Frequency Tuning Range	PR	±100			× 10 <sup>-6</sup>	
Linearity	Lin			10	%	
Slope		Positive				
Enable Control		Yes				Pad 2
Modulation Bandwidth		15			KHz	
VC Input Impedance		10			MΩ	
Output Enable	V <sub>IH</sub>	70%vdd or Floating			V	Pin 2 Tri-state Enable High
Output Disable	V <sub>IL</sub>			30%vdd	V	
<b>Phase Noise</b>						
JitterJitter (Pk-Pk)				40	ps	
Phase Noise			-95		dBc/Hz	100Hz
			-120			1KHz
			-135			10KHz
			-148			100KHz



Environmental Conditions						
Operating Temperature	T <sub>OP</sub>	-40	~	85	°C	
Storage Temperature	T <sub>ST</sub>	-55	~	125	°C	
ESD Level	Human Body Model, class2: 2000V to 4000V; ANSI/ESDA/JEDEC JS-001-2010.					
	Machine Model, class B: 200V to 400V; ANSI/ESDA/JEDEC JS-001-2010.					
Moisture Sensitivity Level	Level 2.					
Vibration	Test Condition: 0.75mm; acceleration:10g;10Hz~2000Hz, one cycle per 30 min, test 2 hour. (3 times for each 3 directions X , Y , Z) .IEC 68-2-06 Test Fc.					
Shock	100g; 6ms; half sine wave (3 times for each 3 directions X , Y , Z) ,IEC 68-2-27 Test Ea/Severity 50A.					

## 2、 Mechanical Structure(mm)



Recommended soldering pattern

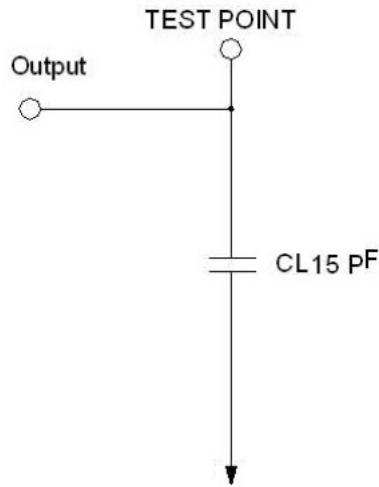
### ➤ PIN FUNCTIONS

Pin	Function
#1	Vcon
#2	Tri-State
#3	GND
#4	Output
#5	NC
#6	VDD

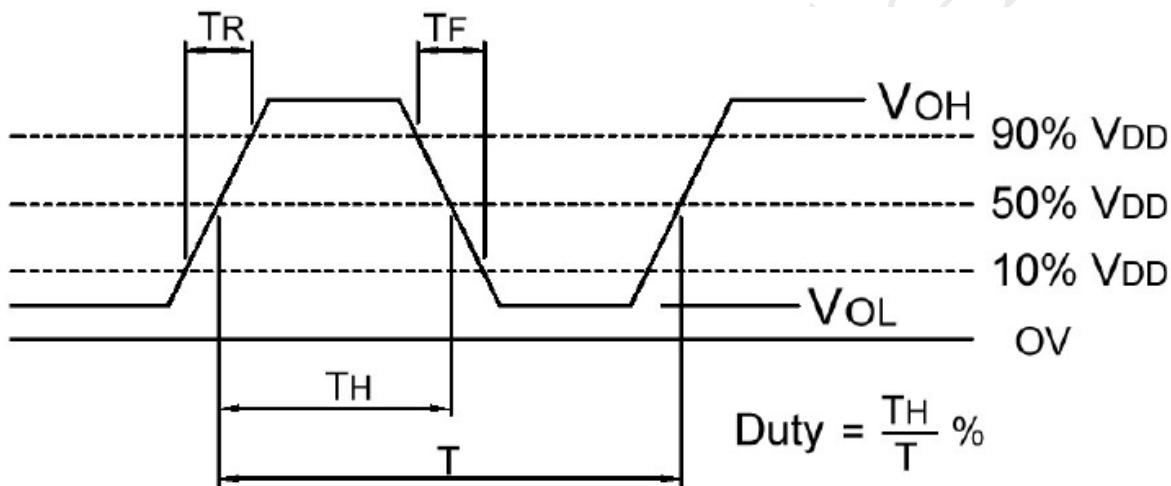
**Note1:** Tolerance ±0.1mm without mark



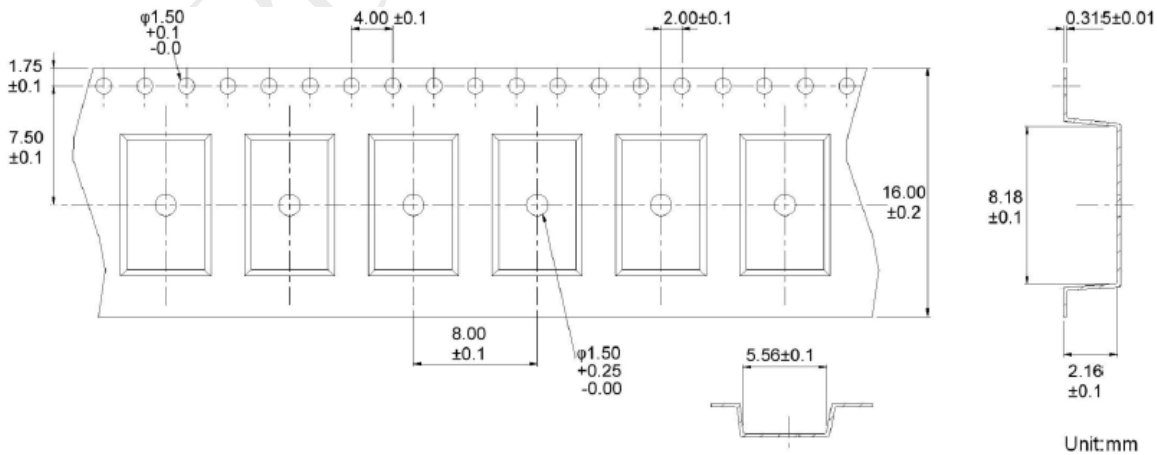
### 3、 Test circuit



### 4、 Output waveform (cmos load)



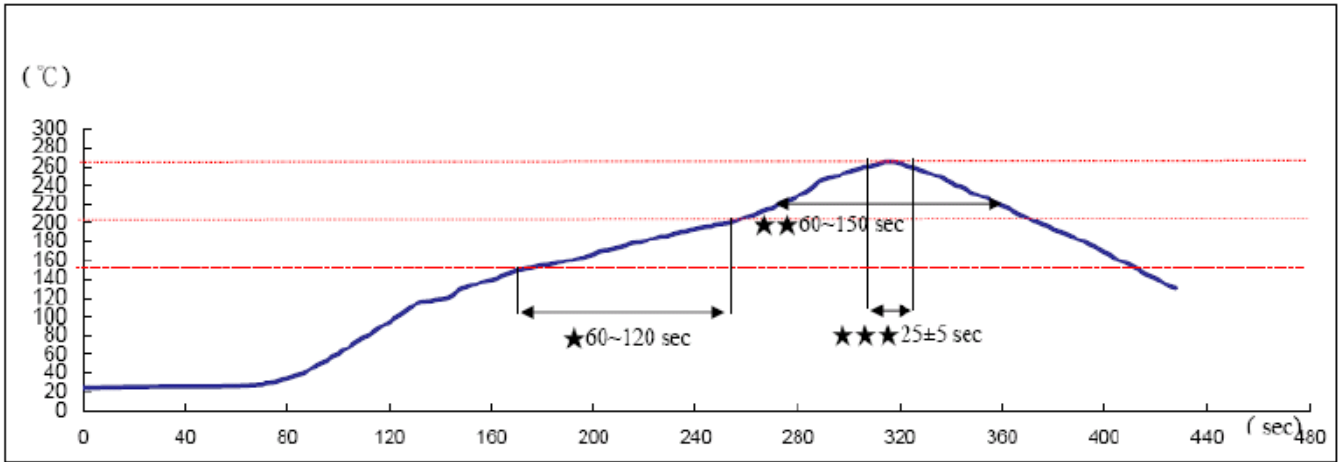
### 5、 Package: Tape & Reel (mm)





## 6、 Recommended ir Reflow Profile

### > IR REFLOW PROFILE OF CERAMIC SMD PRODUCTS FOR Pb FREE PROCESS



Reference Standard: JEDEC-STD 020

Test conditions: ★ Pre-heating : 150°C to 200°C, 60~120secs.

★★ Heating : 217°C, 60~150sec.

★★★ Peak temperature : 260±5°C, 25±5sec.