

Customer Code : _____

DATASHEET

DAPU P/N: **DP7X2600002**

Plot			The Label
Drew	Audited	Approved	Stamp, please! Thanks!
Date: 2016.07.08			

Guangdong Dapu Telecom Technology Co.,Ltd

Bldg16,.N.Ind.Zone,SSL Industry Park, Dongguan City, Guangdong Province, China

TEL: 0086-0769-88010888 FAX: 0086-0769-81800098



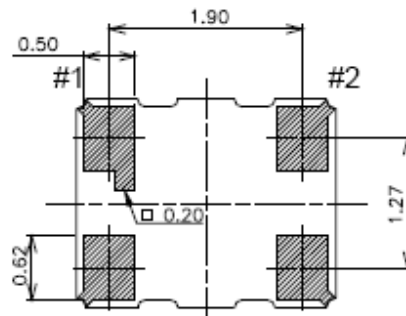
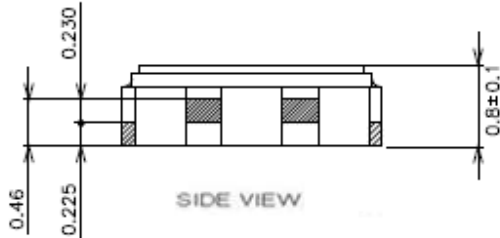
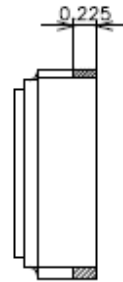
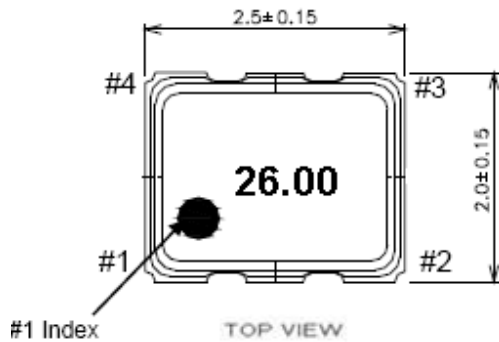
1、Electrical Parameters

MODEL: DP7X2600002								
No.	Parameters		SYM.	Electrical Spec.			Units	Notes
				Min.	Typ.	Max.		
1	Nominal Frequency		FL	26.00			MHz	
2	Output Waveform			Clipped Sine				
3	Output Level			0.8			V _{P-P}	
4	Symmetry			40		60	%	GND level (DC cut)
5	Load Impedance		L _{OAD-R}	9	10	11	KΩ	
6			L _{OAD-C}	9	10	11	pF	
7	Frequency Stability	vs Tolerance		-1.5		+1.5	× 10 ⁻⁶	After two times reflow Ref.to nominal frequency
		vs Temperature		-0.5		+0.5	× 10 ⁻⁶	T _a =-30~+85°C
		Vs Drift Rate /Slope		-10		+10	ppb/s	@0.3°C/s
		vs Hysteresys		-0.6		+0.6	× 10 ⁻⁶	
		vs Supply voltage		-0.1		+0.1	× 10 ⁻⁶	V _{CC} =+1.8V ± 5%
		vs Load Variation		-0.1		+0.1	× 10 ⁻⁶	L _{oad-R} //C=(10 KΩ//10 pF) ± 10%
8	Operating Temperature		T-opr	-40	~	+85	°C	
9	Storage Temperature		T-stg	-40	~	+85	°C	
10	Supply Voltage		VCC	1.71	1.8	1.89	V	
11	Current Consumption		I _{cc}		-	1.5	mA	
12	Aging	-	-	-1.0	-	+1.0	× 10 ⁻⁶ /year	T _a =Room ambient
		-	-	-1.5	-	+1.5	× 10 ⁻⁶ /2year	T _a =Room ambient
		-	-	-2.5	-	+2.5	× 10 ⁻⁶ /5year	T _a =Room ambient
		-	-	-5.0	-	+5.0	× 10 ⁻⁶ /10year	T _a =Room ambient
13	Start-up Time				-	2.0	ms	@90% of final V _{out} level
14	G Sensitivity			-2		+2	ppb/G	Gamma Vector of all 3 axes from 30 to 1500Hz
15	SSB Phase Noise	Phase Noise @25°C				-50	dBc/Hz	1Hz
						-73		5Hz
						-80		10Hz
						-106		100Hz
						-134		1kHz
						-144		10kHz
						-152		100kHz



16	Vibration Test	MIL-STD-883 2007 Condition A	10~2000Hz, 1.52mm, 20g, each axis for 4 hrs
		JESD22-B103 Condition 1	
17	Thermal Shock	MIL-STD-883 1010 Condition B	-55°C, 125°C; soak time is 10 mins, with total 200 cycles
		JESD22-A104 Condition B	
18	Mechanical Shock	MIL-STD-883 2002 Condition B	1500g half-sine, 0.5ms, each axis for 3 times.
		JESD22-B104 Condition B	

2、Mechanical Structure(mm)



Pin Connections

Pin No.	Connection
#1	GND
#2	GND
#3	Output
#4	V _{cc}

unit:mm

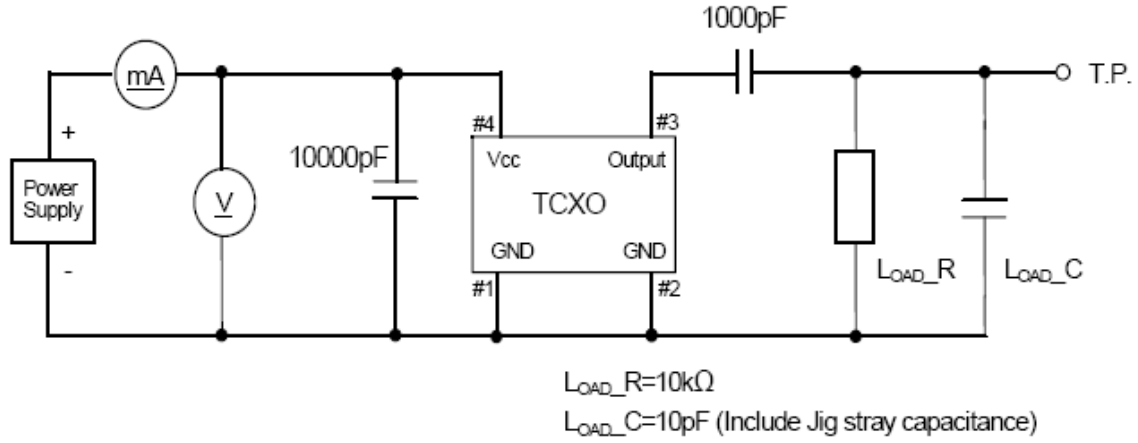
- (1)Frequency 26.00(MHz,4digits)
- (2)Model code BN
- (3)Date code year(1 digit)+Week(2 digits)
e.g.2014/1/1 -401
- (4)Logo D

Dimensional Tolerance: ±0.1mm

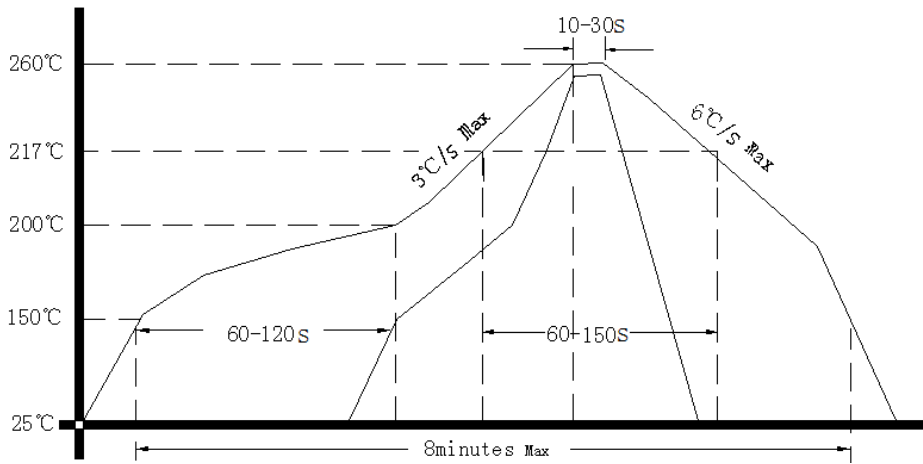
(Unless otherwise noted)



3、 Test Circuit



4、 Reflow Soldering Curve (RoHS)



5、 Package: Tape & Reel (mm)

