

Travelling Merchant: _____

DATASHEET

Standard: **D32-26.00MHz** **TEMPH200140**

Plot			The Label
Drew	Audited	Approved	Stamp, please! Thanks!
Date: 2013.09.02			

Guangdong Dapu Telecom Technology Co.,Ltd

Bldg13-16,.N.Ind.Zone,SSL Industry Park, Dongguan City, Guangdong Province, China

TEL: 0086-0769-88010888 FAX: 0086-0769-81800098



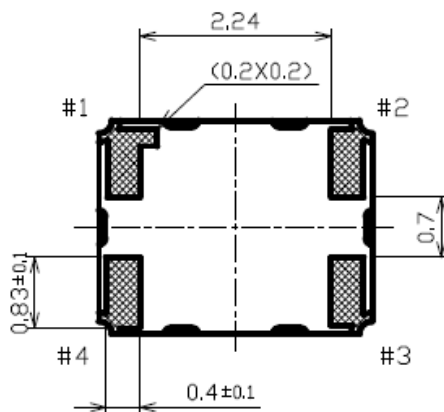
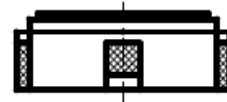
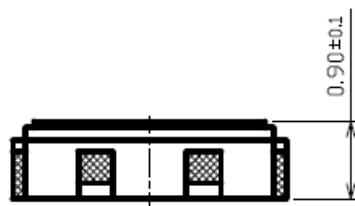
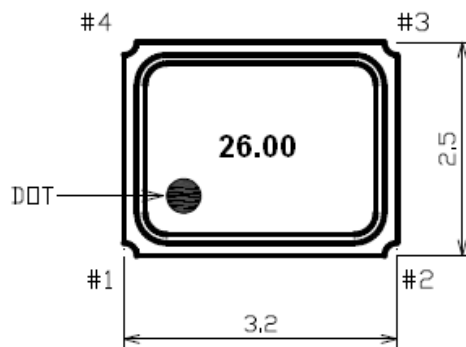
1、 Electrical Parameters

MODEL: D32-26.00MHZ								
No.	Parameters		SYM.	Electrical Spec.				Notes
				Min.	Typ.	Max.	Units	
1	Nominal Frequency		FL	26.00			MHz	
2	Supply Voltage		VDD	2.66	2.8	2.94	V	
3	Current Drain		-	-	-	1.6	mA	
4	Output Level		-	0.8	-	-	Vp-p	
5	Harmonics		-	-	-	-5	dBc	
6	Output Waveform		-	Clipped Sine wave			-	
7	Standard Output Load		-	10KΩ//10pF			-	
8	Frequency Stability	vs. Tolerance	-	-0.5	-	+0.5	$\times 10^{-6}$	At shipping Ref. to nominal frequency
9			-	-1.5	-	+1.5	$\times 10^{-6}$	After 2 times reflow Ref. to nominal frequency
10		vs. Temperature	-	-2.5	-	+2.5	$\times 10^{-6}$	T _A varied from -30°C to -85°C, Ref. to Frequency T _A =25°C
11		vs. Load	-	-0.2	-	+0.2	$\times 10^{-6}$	±10% load change measurement referenced to frequency observed with T _A = 25°C, V _{cc} =2.8V, O _{Load} = 10KΩ//10pF .
12		vs. Supply Voltage	-	-0.2	-	+0.2	$\times 10^{-6}$	V _{cc} varied from 2.66V to 2.94V
13	Operating Temperature Range		-	-30	~	+85	°C	
14	Storage Temperature		-	-40	~	+85	°C	
15	Duty Cycle		-	40	~	60	%	
16	Aging		-	-1	-	+1	$\times 10^{-6}$	over 1st Year
17	Start- up time			-	-	2.0	ms	@90% of final Vout level
18	Frequency Tuning Range		-	-15	-	-9	$\times 10^{-6}$	V _c = 0.5 V. measurement referenced to V _c =1.5V
19			-	+9	-	+15	$\times 10^{-6}$	V _c =2.5V.measurement referenced to V _c =1.5V
20	Linearity		-	-	-	10	%	
21	slope			Positive				
22	Input Impedance		-	500	-	-	KΩ	
23	Phase Noise	@ 1KHz Offset	-	-	-	-130	dBc/Hz	
24	ESD Level		Human Body Model,class2: 2000V to 4000V; ANSI/ESDA/JEDEC JS-001-2010.					
			Machine Model, class B: 200V to 400V; ANSI/ESDA/JEDEC JS-001-2010.					



25	Moisture Sensitivity Level	Level 2.
26	Vibration	Test Condition: 0.75mm ;acceleration:10g;10Hz~2000Hz, one cycle per 30 min, test 2 hour. (3 times for each 3 directions X ,Y , Z) .IEC 68-2-06 Test Fc.
27	Shock	100g; 6ms; half sine wave (3 times for each 3 directions X ,Y , Z),IEC 68-2-27 Test Ea/Severity 50A.

2、Mechanical Structure(mm)

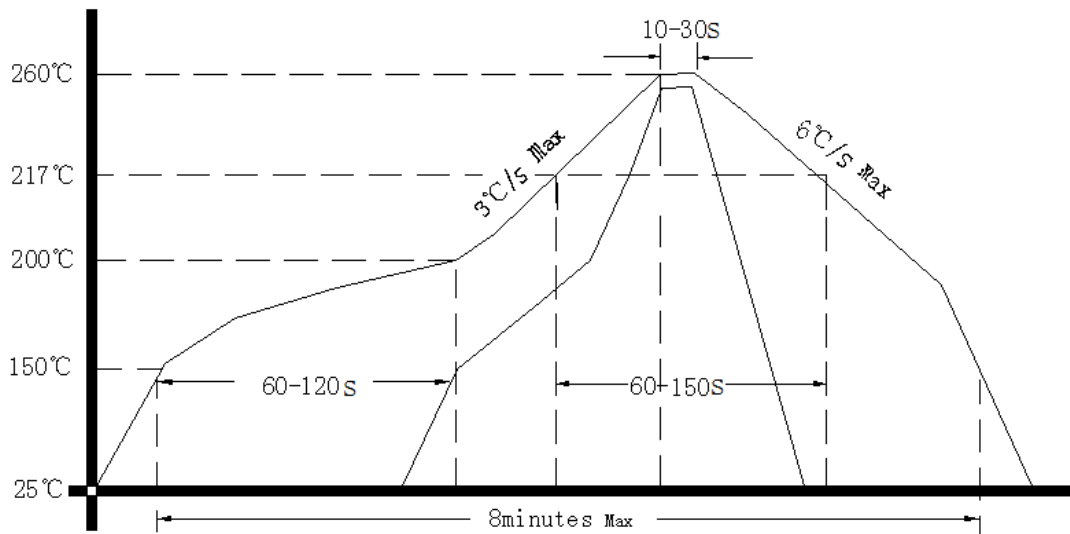


PAD No.	Connection
#1	VCONT
#2	GND
#3	OUTPUT
#4	VCC

Notel: Tolerance ± 0.1 mm



3、 Reflow Soldering Curve (RoHS)



4、 Package: Tape & Reel (mm)

