

Travelling Merchant: _____

DATASHEET

Standard: OS756-C619-125.00MHz

Plot			The Label
Drew	Audited	Approved	Stamp, please! Thanks!
Date:			

Guangdong Dapu Telecom Technology Co.,Ltd

Bldg13,.N.Ind.Zone,SSL Industry Park, Dongguan City, Guangdong Province, China

TEL: 0086-0769-88010888 FAX: 0086-0769-81800098



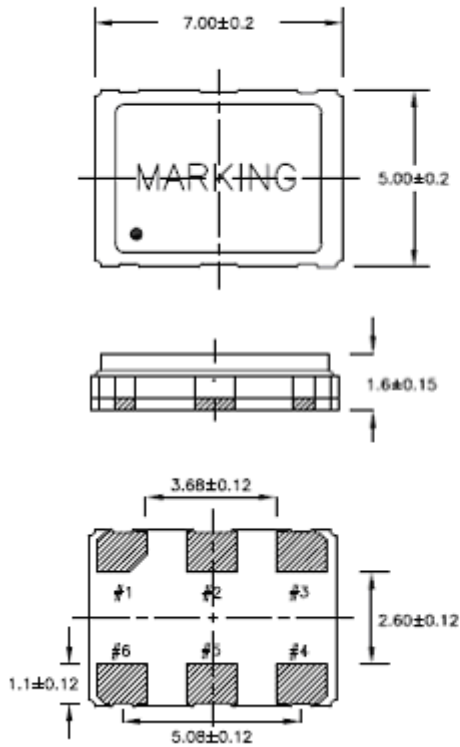
1. Electrical Parameters

MODEL: OS756-C619-125.00MHZ						
Item	Description	Parameters			Unit	Test Condition
		Min.	Typ.	Max.		
Output	Frequency	125.00			MHz	
	Output Waveform	LVPECL				
	Output Low Voltage			1.68	V	@25°C, V _{CC} =3.3V
	Output High Voltage	2.275			V	@25°C, V _{CC} =3.3V
	Duty Cycle	45	50	55	%	@50%
	Rise / Fall Time (20%~80%)			1	ns	@25°C
	Load	50			Ω	
	Jitter			1	ps	RMS (12KHz ~20MHz)
Frequency Stabilities	Frequency Tolerance vs. Operating Temperature Range	-50		+50	ppm	T _A varied from -40°C to 85°C, measurement referenced to frequency observed with T _A =25°C, V _{CC} =3.3V, O _{load} =50 Ω.
	Initial Frequency Tolerance	-15		+15	ppm	Measurement referenced to frequency observed with T _A =25°C, V _{CC} =3.3V, and after 5s of operation, within 30 days after ex-works.
	Frequency Tolerance vs. Supply Voltage	-3		+3	ppm	measurement referenced to frequency observed T _A =25°C, V _{CC} =3.3V and O _{Load} =50 Ω
	Frequency Tolerance vs. Load	-1		+1	ppm	5% load change measurement referenced to frequency observed with T _A =25°C, V _{CC} =3.3V and O _{Load} =50 Ω.
	Aging Tolerance 1 Year	-3		+3	ppm	V _{CC} , T _A constant measurement referenced to frequency observed with T _A =25°C, V _{CC} =3.3V, and after 30 days of operation.
Power Supply	Current Consumption		60		mA	@25°C
	Supply Voltage		+3.3		V	unalterable
Environmental Conditions	Operable Temperature	-40		+85	°C	
	Storage Temperature	-55		+125	°C	
	Vibration	Test Condition: 0.75mm ;acceleration:10g;10Hz~2000Hz, one cycle per 30 min, test 2 hour. (3 times for each 3 directions X , Y , Z)				



	Shock	100g; 6ms; half sine wave (3 times for each 3 directions X ,Y, Z),IEC 68-2-27 Test Ea/Severity 50A.
	Drop	Test Condition: free drop on steel-made surface or rigid plane from a height of 100cm,IEC 68-2-32.

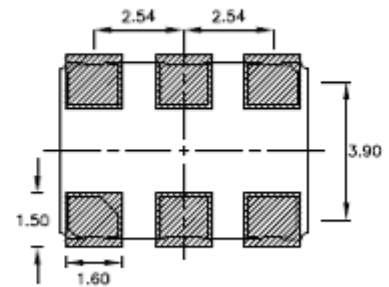
2. Mechanical Structure(mm)



Standard

Terminal	Connection
#1	NC or INH
#2	NC
#3	GND
#4	OUT
#5	OUTN
#6	+Vcc

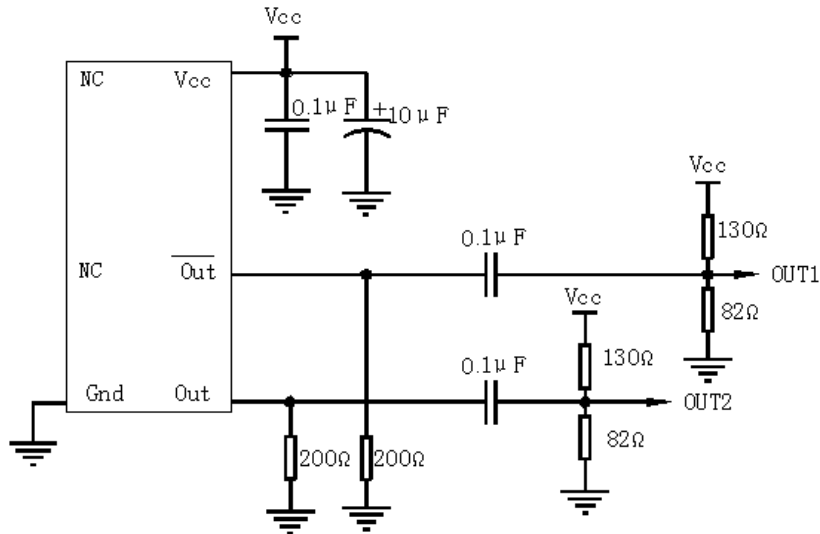
LAND PATTERN (REFERENCE)



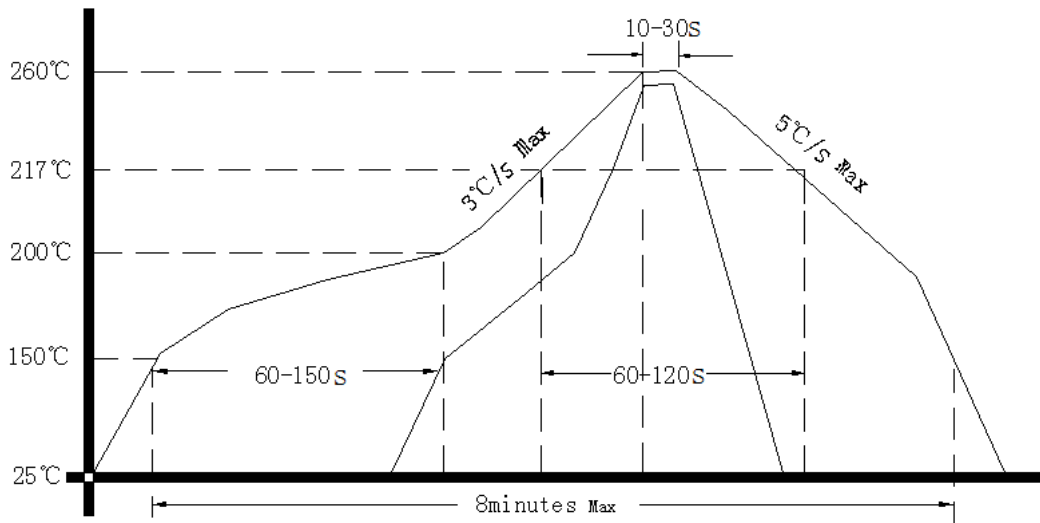
Note1: Referential Weight 0.2g



3. Test Circuit



4. Reflow Soldering Curve (RoHS)



5. Package: Tape & Reel (mm)

