

Travelling Merchant: \_\_\_\_\_

# DATASHEET

Standard: DP7W25600001Y75ZCYM25601

Plot			The Label
Drew	Audited	Approved	Stamp, please! Thanks!
Date: 2014.12.23			

## Guangdong Dapu Telecom Technology Co.,Ltd

Bldg13-16,.N.Ind.Zone,SSL Industry Park, Dongguan City, Guangdong Province, China

TEL: 0086-0769-88010888 FAX: 0086-0769-81800098

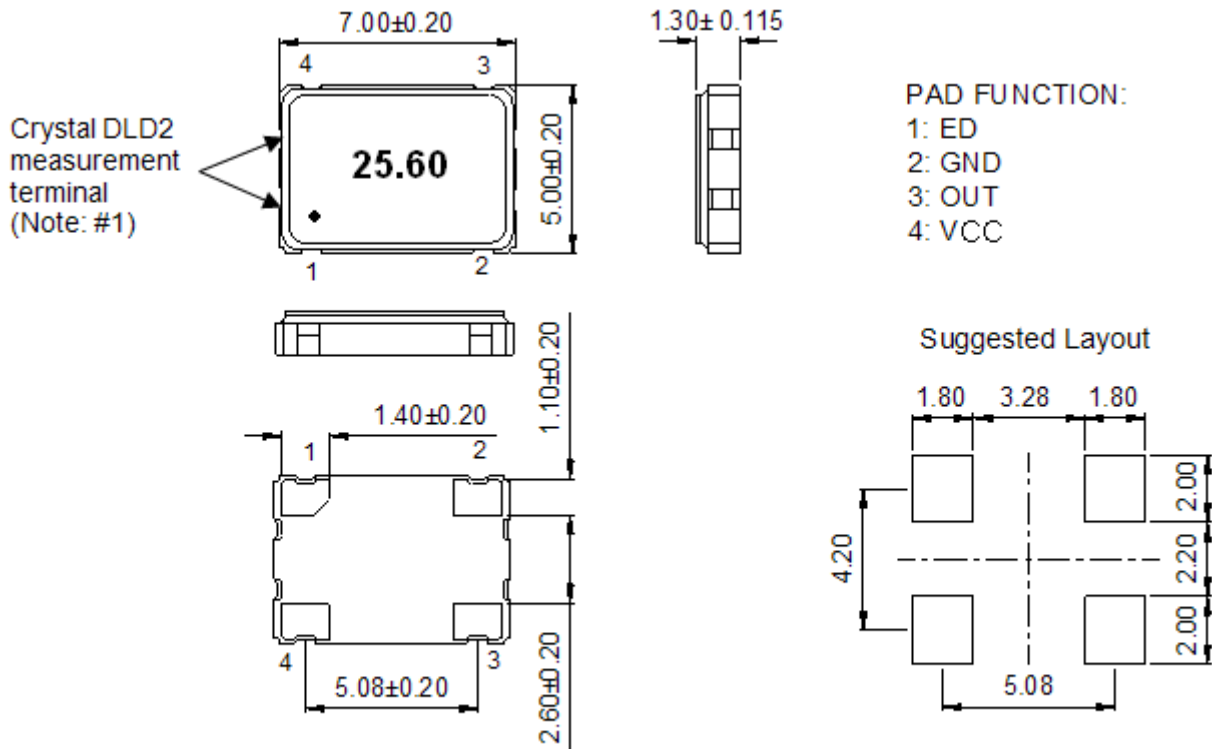


## 1、Electrical Parameters

MODEL: DP7W25600001							
No.	Parameters	SYM.	Electrical Spec.				Notes
			Min.	Typ.	Max.	Units	
1	Nominal Frequency	FL	25.60			MHz	
2	Mode of Oscillation	OT	Fundamental				
3	Frequency Tolerance	FT	-20	~	+20	$\times 10^{-6}$	(Inclusive of operating Temperature rang supply voltage and load)
4	Frequency Stability	TR	-40	~	+40	$\times 10^{-6}$	
5	Fan out type	LT	CMOS				
6	Output Load:	CL	10			pF	
7	Supply Voltage	VDD	3.3			V	$\pm 10\%$
8	Input Current	Icc	-	-	22	mA	
9	Operating Temperature	Topr	-40	~	85	$^{\circ}\text{C}$	
10	Storage Temperature	Tstg	-55	~	+125	$^{\circ}\text{C}$	
11	Output Voltage High	VoH	2.97	-	-	V	
12	Output Voltage Low	Vol	-	-	0.33	V	
13	Rise Time	Tr	-	-	10	ns	10%-90% VDD Level
14	Fall Time	Tf	-	-	10	ns	90%-10% VDD Level
15	Symmetry (Duty ratio)	TH/T	40	~	60	%	
16	Start-up Time	Tosc	-	-	10	ms	
17	Aging	-	$\pm 2$			$\times 10^{-6}$	1st. Year at 25 $^{\circ}\text{C}$
18	ESD Level	Human Body Model,class2: 2000V to 4000V; ANSI/ESDA/JEDEC JS-001-2010.					
		Machine Model, class B: 200V to 400V; ANSI/ESDA/JEDEC JS-001-2010.					
19	Moisture Sensitivity Level	Level 2.					
20	Vibration	Test Condition: 0.75mm ;acceleration:10g;10Hz~2000Hz, one cycle per 30 min, test 2 hour. (3 times for each 3 directions X , Y , Z ).IEC 68-2-06 Test Fc.					
21	Shock	100g; 6ms; half sine wave (3 times for each 3 directions X , Y , Z ),IEC 68-2-27 Test Ea/Severity 50A.					

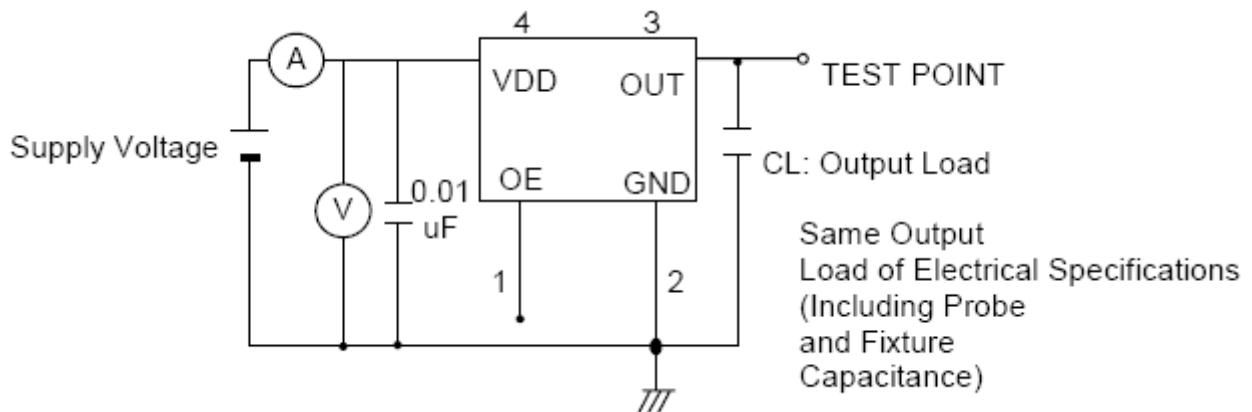


## 2、Mechanical Structure(mm)



Note: #1. DLD2 / Drive Level Dependency 2 Maximum resistance minus minimum resistance.

## 3、Test Diagram



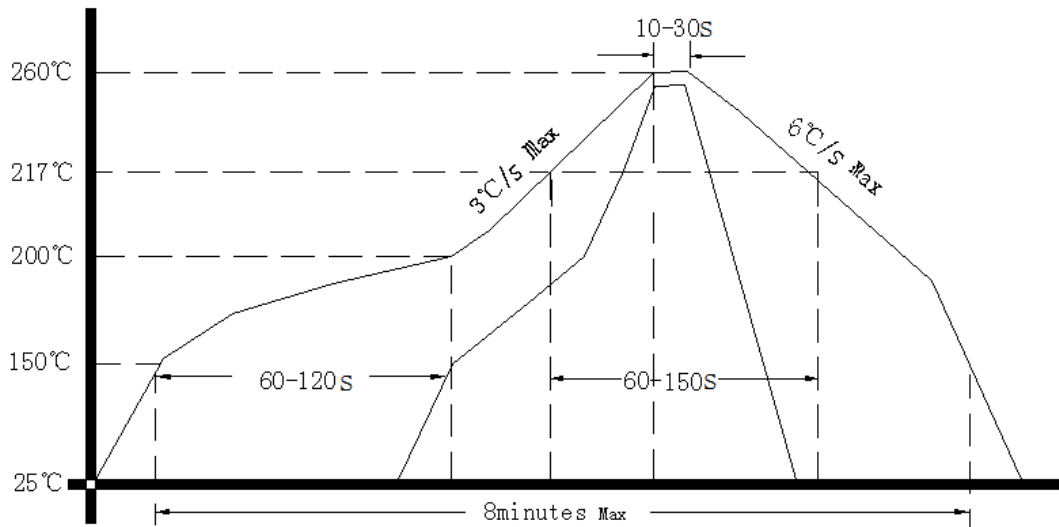
Control input (output enable/disable)

Logic 1 or open on pad 1: Oscillator output

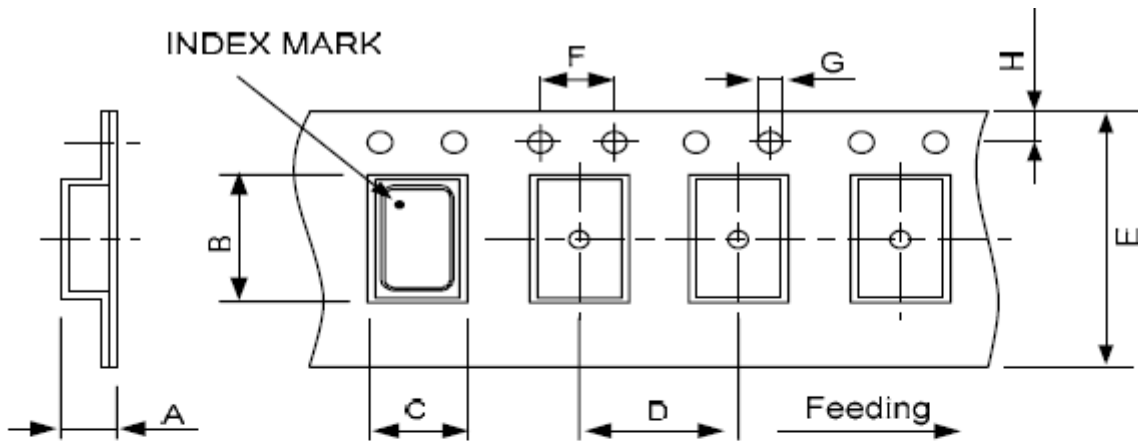
Logic 0 on pad 1 : Disable output to high impedance



#### 4、 Reflow Soldering Curve (RoHS)



#### 5、 Package: Tape & Reel (mm)



DIMENSIONS	A	B	C	D	E	F	G	H	(UNIT : mm)
	2.30	7.90	5.45	8.00	16.00	4.00	1.50	1.75	

REMARK :

