

**Customer Code:** \_\_\_\_\_

# DATASHEET

**DAPU P/N:** DPA2124M5760AH1GEA0

<b>DAPU</b>			<b>Customer Approval</b>
Drew	Audited	Approved	
Jieshu ZHENG	Jianhua LIN	Gangtao FENG	
Date:	2024/12/18		
			Stamp, please! Thanks!

## Guangdong Dapu Telecom Technology Co.,Ltd

Bldg 5, SSL Modern Enterprise Accelerator Zone, Dongguan City, Guangdong Province, PRC China  
TEL: 0086-0769-88010888 FAX: 0086-0769-81800098



Guangdong Dapu Telecom Technology Co., Ltd  
<http://www.dptel.com>

Bldg 5, SSL Modern Enterprise  
Accelerator Zone, Dongguan City,  
Guangdong Province, PRC China  
TEL:0086-0769-88010888  
FAX:0086-0769-81800098

---

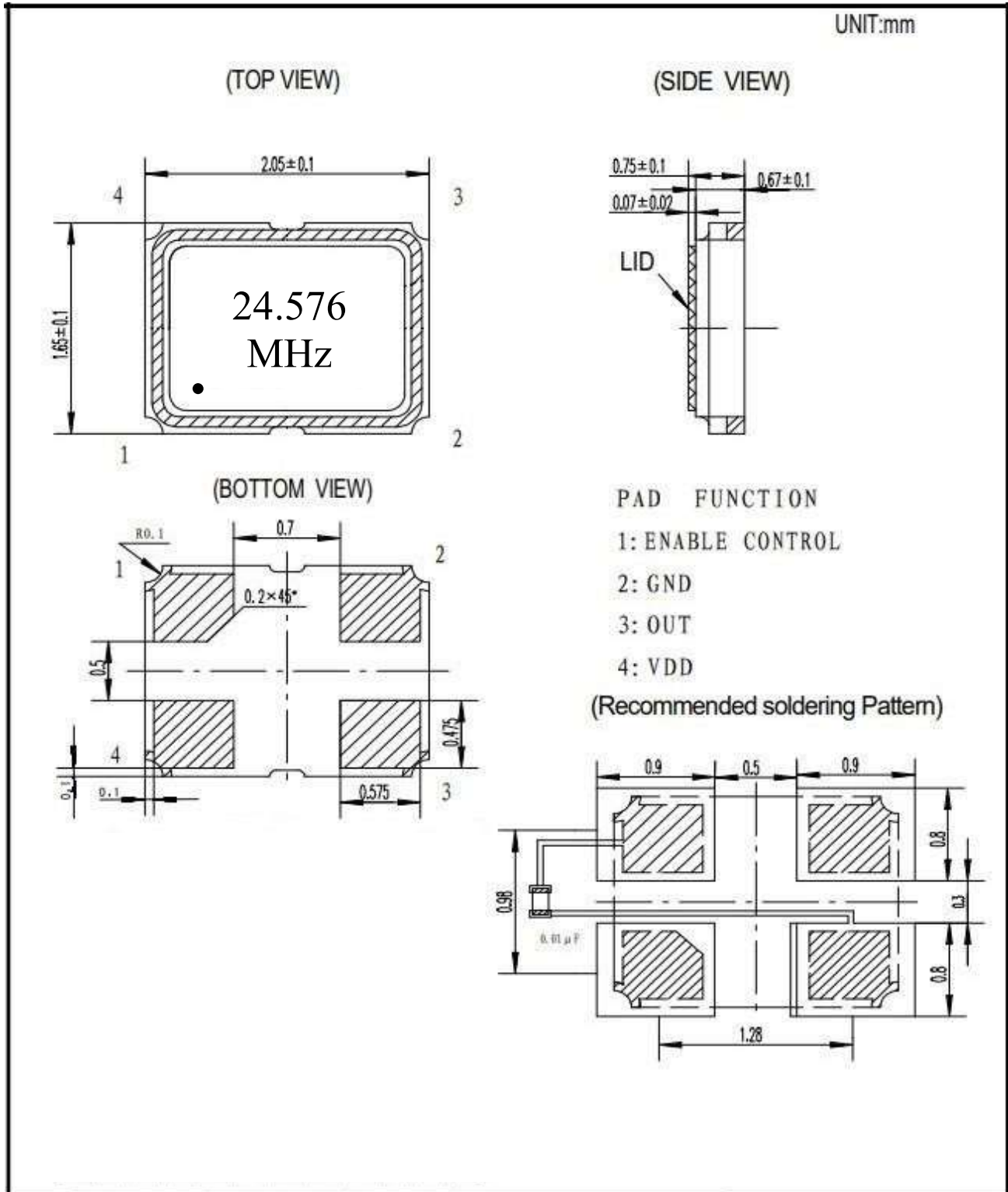
**Table of amendment**

Version	Revision contents	Prepared by	Revised date
1.0	The first issued	Jieshu ZHENG	2024/12/18

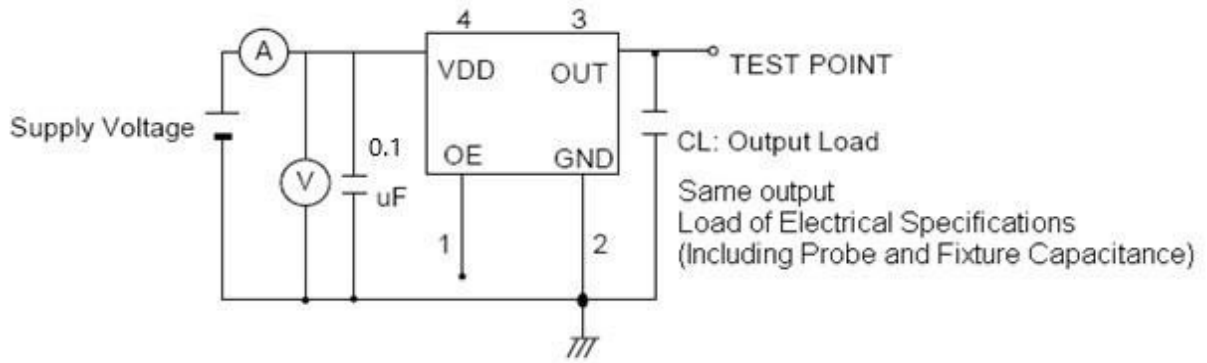
## 1、Electrical Parameter

MODEL :		DPA2124M5760AH1GEA0					
No.	Parameters	SYM.	Electrical Spec.				Notes
			Min.	Typ.	Max.	Units	
1	Nominal Frequency	FL	24.576			MHz	
2	Oscillation Mode	-	Fundamental			-	
3	Total Stability	-	-50		50	ppm	Frequency tolerance@25°C and frequency stability vs. operating temperature range and voltage variance.
4	Operating Temperature	Topr	-40		105	°C	
5	Storage Temperature	Tstg	-55		125	°C	
6	Supply Voltage	VDD	2.97	3.3	3.63	V	
7	Input Current	Icc			8	mA	
8	Output waveform	-	CMOS			-	
9	Output Load	CL	15			pF	
10	Output Voltage High	VOH	0.9			V <sub>DD</sub>	
11	Output Voltage Low	VOL			0.1	V <sub>DD</sub>	
12	Rise Time	Tr			5	ns	10% -90% V <sub>DD</sub> Level
13	Fall Time	Tf			5	ns	90% -10% V <sub>DD</sub> Level
14	Aging	-	-5		5	ppm	First Year at 25°C
15	Tri-State Output Enable	-	0.7			V <sub>DD</sub>	Pin 1, OE or ST
16	Tri-State Output Disable	-			0.3	V <sub>DD</sub>	Pin 1, OE or ST
17	Duty Cycle	-	45~55			%	
18	Start-Up Time	Tstart			3	ms	Measured from the time V <sub>DD</sub> reaches its rated minimum value.
19	RMS Jitter	-			1	ps	12kHz to 20MHz

## 2、 Mechanical Structure



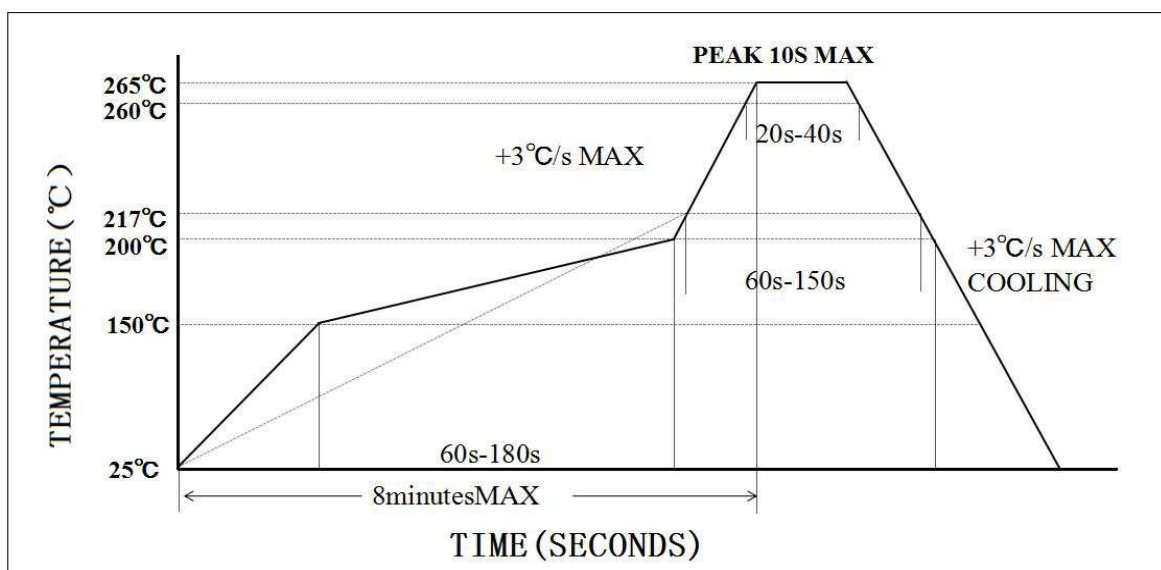
### 3、 Test Circuit



Control input (output enable/disable)

Tri-State Pin	Output Pin
Logic 1 or open on pad 1	Oscillator output
Logic 0 on pad 1	Disable output to high impedance

### 4、 Reflow Soldering Curve (RoHS)



**5、 Package: Tape & Reel (mm)**

