

Customer Code: _____

DATASHEET

DAPU P/N: DPZ7510M000050A0

| DAPU | | | Customer Approval |
|------------------|---------|----------|------------------------|
| Drew | Audited | Approved | Stamp, please! Thanks! |
| Jack | David | William | |
| Date: 2022.10.10 | | | |

Guangdong Dapu Telecom Technology Co.,Ltd

Building 5, No.24, Industrial East Road, Songshanhu Park, Dongguan, Guangdong, P.R. China

TEL: 0086-0769-88010888 FAX: 0086-0769-81800098



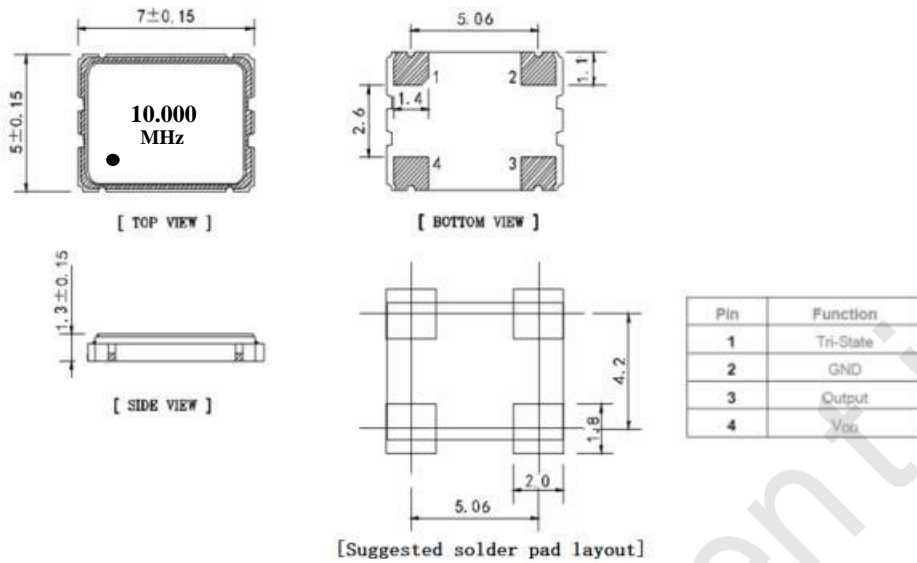
1、 Electrical Parameters

MODEL: DPZ7510M000050A0**RoHS Compliant**

| No. | Parameters | SYM. | Electrical Spec. | | | | Notes |
|-----|--------------------------|---------------------------------|------------------|------|-------|------------------|--|
| | | | Min. | Typ. | Max. | Units | |
| 1 | Nominal Frequency | FL | 10.00 | | | MHz | |
| 2 | Frequency Stability | - | -50 | | + 50 | $\times 10^{-6}$ | Inclusive of frequency tolerance at 25°C, 1st year aging at 25°C, and variations over operating temperature, supply voltage, and load. |
| 3 | Operating Temperature | Topr | -40 | ~ | + 85 | °C | |
| 4 | Storage Temperature | Tstg | -55 | ~ | + 125 | °C | |
| 5 | Supply Voltage | V _{DD} | 4.5 | 5.0 | 5.5 | V | |
| 6 | Input Current | I _{cc} | | | 20 | mA | |
| 7 | Output waveform | - | CMOS | | | | |
| 8 | Output Load | CL | 15 | | | pF | |
| 9 | Output Voltage High | V _{OH} | 90% | | | V _{DD} | |
| 10 | Output Voltage Low | V _{OL} | | | 10% | V _{DD} | |
| 11 | Rise/Fall Time | T _r 、 T _f | | | 6 | ns | 10%~90% V _{DD} Level |
| 12 | Aging | - | -2 | | + 2 | $\times 10^{-6}$ | First Year at 25°C |
| 13 | Tri-State Output Enable | - | 70% | | | V _{DD} | Pin 1, OE |
| 14 | Tri-State Output Disable | - | | | 30% | V _{DD} | Pin 1, OE |
| 15 | Duty Cycle | - | 40 | ~ | 60 | % | |
| 16 | Start-Up Time | T _{start} | | | 10 | ms | Measured from the time V _{DD} reaches its rated minimum value |



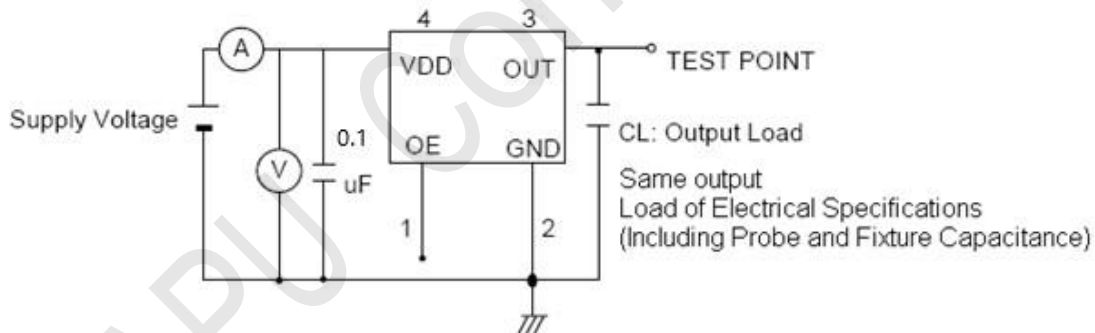
2、 Mechanical Structure(mm)



Notel 1: Tolerance ± 0.2 mm without mark

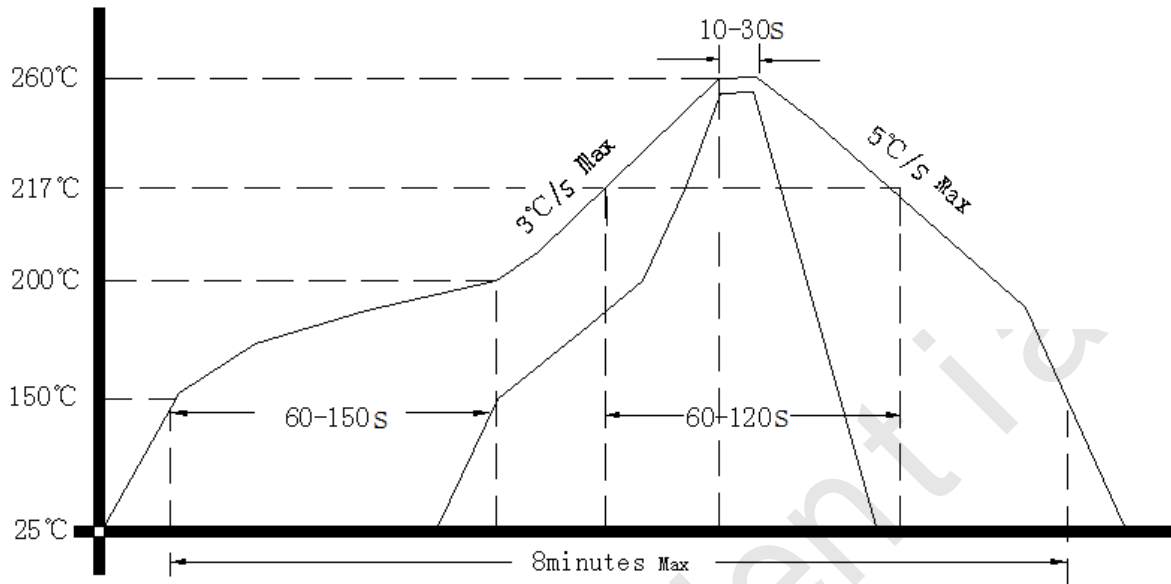
Notel 2: Referential Weight 0.1415g

3、 Test Circuit

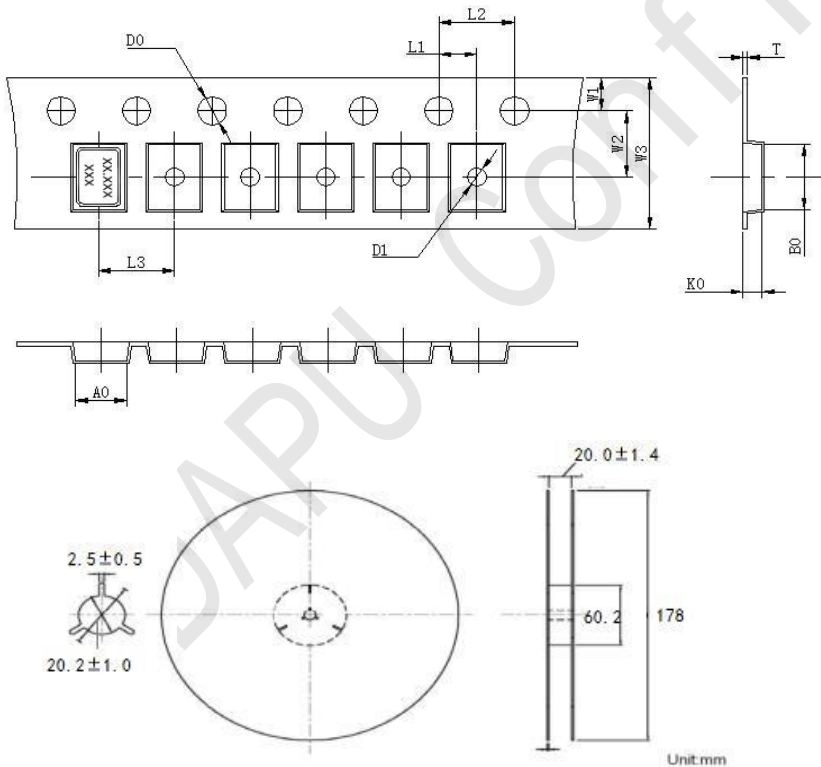




4、 Reflow Soldering Curve (RoHS)



5、 Package: Tape & Reel (mm)



| | |
|----|-----------|
| L1 | 2.00±0.1 |
| L2 | 4.00±0.1 |
| L3 | 8.00±0.1 |
| D0 | 1.5±0.1 |
| D1 | 1.50±0.1 |
| W1 | 1.75±0.1 |
| W2 | 7.50±0.1 |
| W3 | 16.00±0.3 |
| A0 | 5.6±0.1 |
| B0 | 7.9±0.1 |
| K0 | 1.90±0.1 |
| T | 0.3±0.05 |