

CUSTOMER: \_\_\_\_\_

# DATASHEET

PRODUCT TYPE:                   DPTC2016                  

DAPU P/N:           ZT21-A579-26.00MHZ          

Plot			The Label
Drew	Audited	Approved	Stamp, please! Thanks!
Jack	David	William	
Date: 2023.02.08			

**Guangdong Dapu Telecom Technology Co.,Ltd**

Building 5, No.24, Industrial East Road, Songshanhu Park, Dongguan, Guangdong, P.R. China

TEL: 0086-0769-88010888 FAX: 0086-0769-81800098





## 1、Electrical Parameters

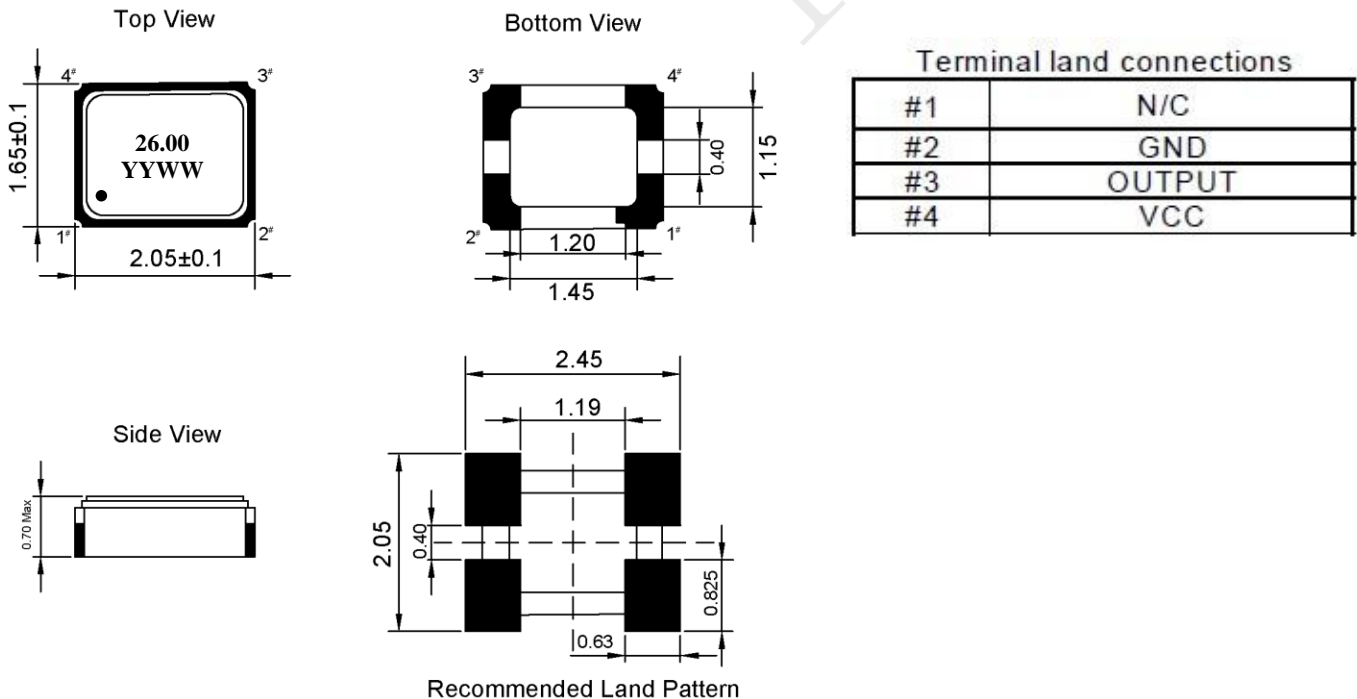
MODEL: ZT21-A579-26.00MHz						
Item	Description	Parameters			Unit	Test Condition
		Min.	Typ.	Max.		
Output	Frequency	26.00			MHz	
	Output Waveform	Clipped Sine Wave				
	Vp-p	0.8			V	
	Load	10KΩ//10pF				
Frequency Stabilities	Initial Frequency Tolerance	-1		+1	$\times 10^{-6}$	@25 ± 2°C, 2H, after 2 times reflow soldering, base on nominal frequency.
	vs. Operating Temperature Range	-0.5		+0.5	$\times 10^{-6}$	T <sub>A</sub> varied from -40°C to 85°C, measurement referenced to frequency observed with f <sub>ref</sub> =(f <sub>max</sub> +f <sub>min</sub> )/2, V <sub>cc</sub> =1.8V, O <sub>load</sub> =10KΩ//10pF, temperature variable speed less than 2°C per minute.
	Frequency Tolerance vs. Supply Voltage	-0.1		+0.1	$\times 10^{-6}$	measurement referenced to frequency observed T <sub>A</sub> =25°C, V <sub>cc</sub> = 1.8 ± 5%, and O <sub>Load</sub> =10KΩ//10pF.
	Frequency Tolerance vs. Load	-0.1		+0.1	$\times 10^{-6}$	10% load change measurement referenced to frequency observed with T <sub>A</sub> =25°C, V <sub>cc</sub> =1.8V, and O <sub>Load</sub> =10KΩ//10pF .
	Aging Tolerance 1 Year	-1		+1	$\times 10^{-6}$	T <sub>A</sub> =25 °C , V <sub>cc</sub> =1.8V , and after 1h of operation.
Power Supply	Current consumption			3	mA	@25°C, V <sub>cc</sub> =1.8V, ,O <sub>Load</sub> =10KΩ//10pF.
	Start up Time			2	ms	More than 90% of final output voltage
	Supply Voltage	1.71	1.8	1.89	V	
SSB Phase Noise	Phase Noise@25 ± 2°C		-93	-88	dBc/Hz	10Hz
			-123	-118		100Hz
			-145	-138		1KHz
			-154	-148		10KHz
			-157	-152		100KHz
			-157	-152		1MHz



Environmental Conditions	Operable Temperature	-40	+85	°C
	Storage Temperature	-55	+105	°C
	ESD Level	Human Body Model,class2: 2000V; ANSI/ESDA/JEDEC JS-001-2010.		
		Machine Model, class B: 200V; JEDEC JESD22-A115C.		
	Moisture Sensitivity Level	Level 1.		
	Vibration	Test Condition: 0.75mm ;acceleration:10g;10Hz~2000Hz, one cycle per 30 min, test 2 hour. (3 times for each 3 directions X ,Y , Z ) .IEC 68-2-06 Test Fc.		
Shock	100g; 6ms; half sine wave (3 times for each 3 directions X ,Y , Z ),IEC 68-2-27 Test Ea/Severity 50A.			
Full Package Storage	Relative humidity (%)	20%~70%		
	Temperature (°C)	-10~35°C		

## 2、Mechanical Structure(mm)

### 2.1 Dimensions

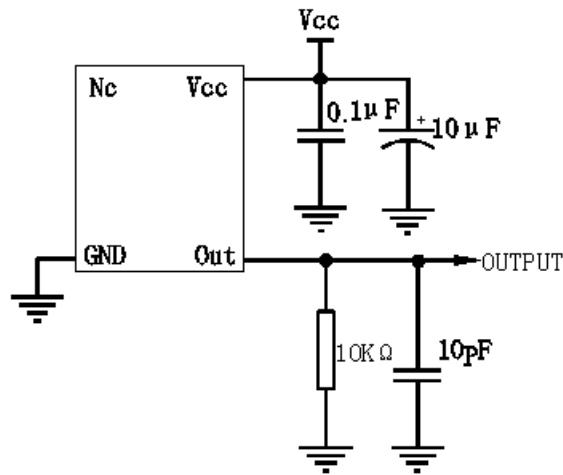


Note1: N/C is not connect

Note2: YYWW representative Year/Week



### 3. Test Circuit



### 4. Reflow Soldering Curve (RoHS)

