

Customer Code: \_\_\_\_\_

# DATASHEET

DAPU P/N: **DP8X2500001**

DAPU			Customer Approval
Drew	Audited	Approved	FOR DAPU  Stamp, please! Thanks!
Date: 2020.11.05			

## Guangdong Dapu Telecom Technology Co.,Ltd

Bldg13-16,.N.Ind.Zone,SSL Industry Park, Dongguan City, Guangdong Province, China

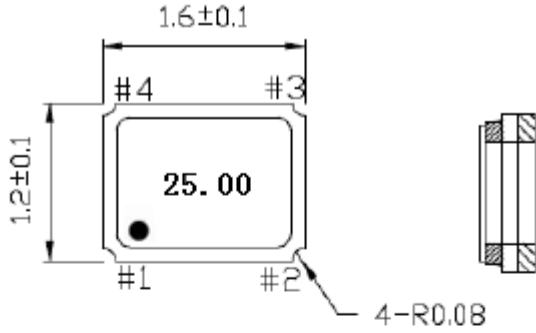
TEL: 0086-0769-88010888 FAX: 0086-0769-81800098

**1、 Electrical Parameters**

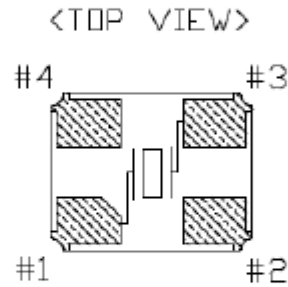
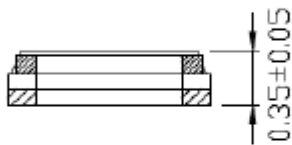
MODEL: DP8X2500001							
No.	Parameters	SYM.	Electrical Spec.				Notes
			Min.	Typ.	Max.	Units	
1	Nominal Frequency	FL	25.00			MHz	
2	Oscillation Mode	-	Fundamental			-	
3	Load Capacitance	CL	8			pF	
4	Frequency Tolerance	-	-10	-	+10	$\times 10^{-6}$	at 25°C
5	Operating temperature range		-10	-	+10	$\times 10^{-6}$	-20°C~70°C
6	Equivalent Series Resistance	-			100	$\Omega$	
7	Operating Temperature	-	-20	~	+70	°C	
8	Storage Temperature Range	-	-40	~	+105	°C	
9	Aging	-	-3	-	+3	$\times 10^{-6}$	1st Year
10	Drive Level	DL	-	-	100	$\mu$ W	
11	Shunt Capacitance	C0	-	-	3	pF	
12	Insulation Resistance	-	500	-	-	M $\Omega$	at DC 100V
13	ESD Level	Human Body Model,class2: 2000V to 4000V; ANSI/ESDA/JEDEC JS-001-2010.					
		Machine Model, class B: 200V to 400V; JEDEC JESD22-A115C.					
14	Moisture Sensitivity Level	Level 2.					
15	Vibration	Test Condition: 0.75mm ;acceleration:10g;10Hz~2000Hz, one cycle per 30 min, test 2 hour. (3 times for each 3 directions X , Y , Z) .IEC 68-2-06 Test Fc.					
16	Shock	100g; 6ms; half sine wave (3 times for each 3 directions X , Y , Z ),IEC 68-2-27 Test Ea/Severity 50A.					
17	Full Package Storage	Relative humidity (%)			20%~70%		
		Temperature (°C)			-10~35°C		



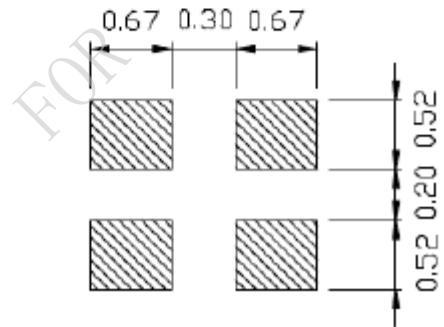
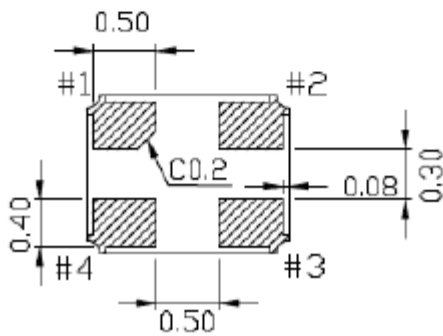
## 2、 Mechanical Structure(mm)



PIN CONNECT	
1,3	Crystal
2	GND Connected to cover
4	NC Please connect it with GND



LAND PATTERN<REFERENCE>

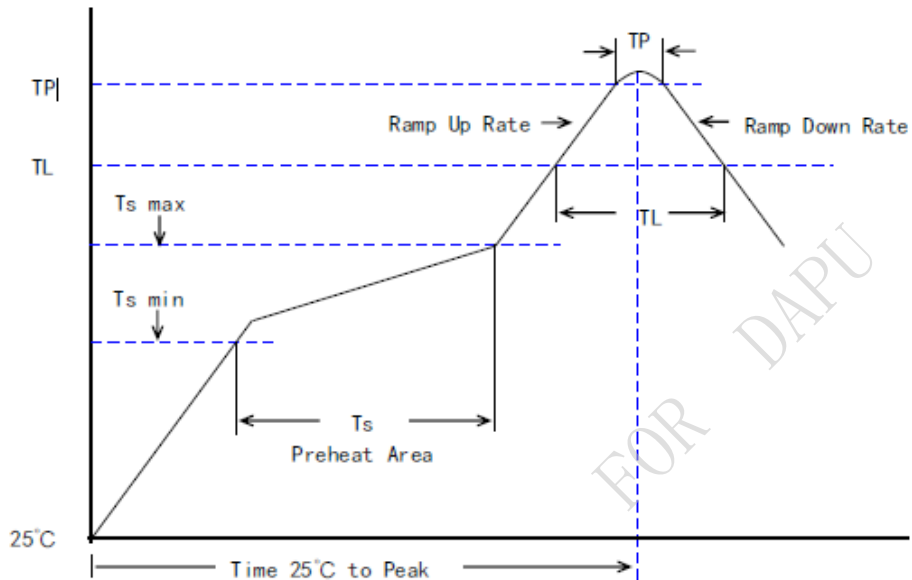


Note: Tolerance ±0.2mm



### 3、 Reflow Soldering Curve (RoHS)

Profiles Feature	Pb-Free Assembly
Preheat/Soak	
Temperature Min (Ts min)	150°C
Temperature Max (Ts max)	200°C
Time (Ts) from (Ts min to Ts max)	60-120 seconds
Ramp-up rate (TL to TP)	3°C/second max.
Liquidous temperature (TL)	217°C
Time (TL) maintained above TL	60-150 seconds
Peak/Classification Temperature (TP)	260±5°C
Time within 5°C of actual Peak Temperature (TP)	20~40 seconds
Ramp-down rate (TP to TL)	6°C/second max.
Time 25 ° C to peak temperature	8 minutes max.
Suggest reflow times	3 Times max



### 4、 Package: Tape & Reel (mm)

