

Customer Code: \_\_\_\_\_

# DATASHEET

DAPU P/N: DPBF12288001

\_\_\_\_\_

DAPU			Customer Approval
Drew	Audited	Approved	Stamp, please! Thanks!
Date: 2020.05.25			

## Guangdong Dapu Telecom Technology Co.,Ltd

Bldg 16,.N.Ind.Zone,SSL Industry Park, Dongguan City, Guangdong Province, China

TEL: 0086-0769-88010888 FAX: 0086-0769-81800098



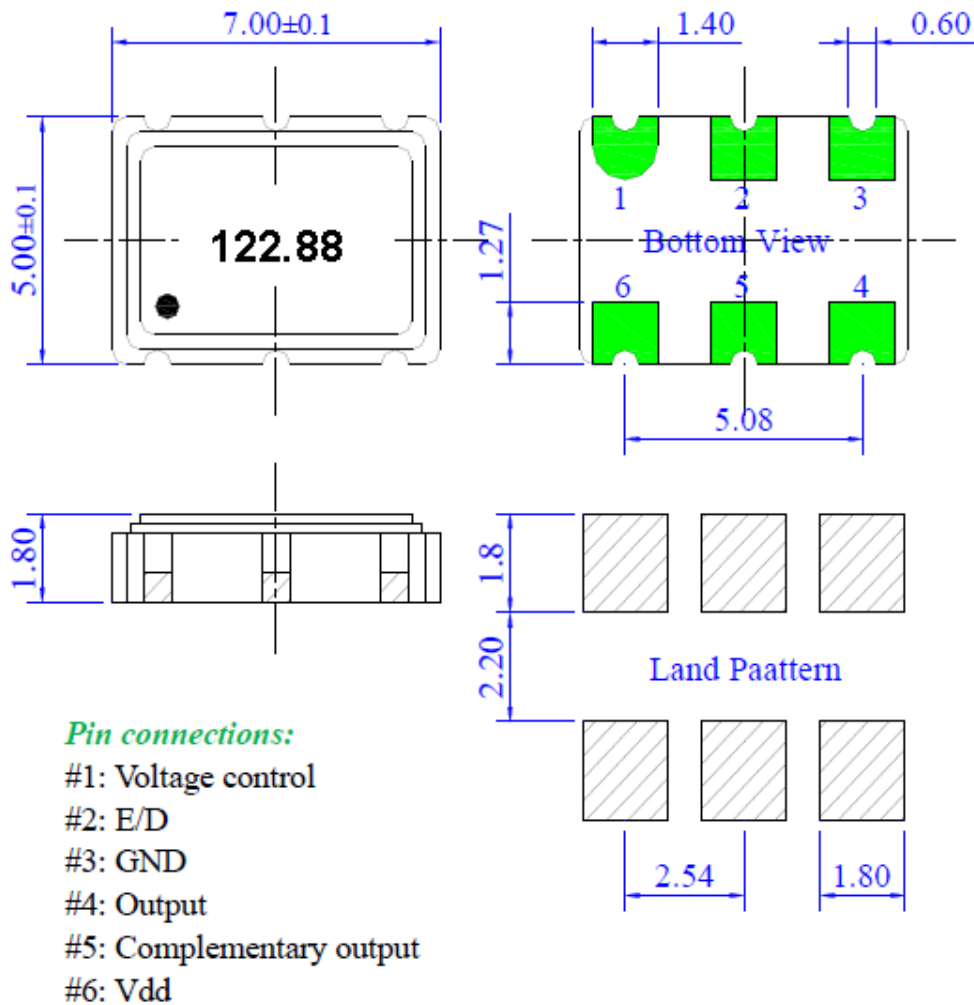
## 1、 Electrical Parameters

MODEL: DPBF12288001							
No	Parameters	SYM.	Electrical Spec.				Notes
			Min.	Typ.	Max.	Units	
1	Nominal Frequency	FL	122.88			MHz	
2	Output waveform		LVDS				
3	Duty Cycle		45	50	55	%	
4	Frequency Stability		-50		+50	$\times 10^{-6}$	Frequency stability includes frequency tolerance@25°C and frequency stability vs. operating temperature range and voltage variance and first year aging.
5	Operating Temperature	Topr	-40		85	°C	The operating temperature range over which the frequency stability is measured.
6	Storage Temperature	Tstg	-55		125	°C	
7	Supply Voltage	VDD	3.135	3.3	3.465	V	
8	Input Current	Icc			80	mA	
9	Start Time				3.0	ms	
10	Output Load:	CL	100			ohm	
11	Output Voltage High	VoH			1.6	V	
10	Output Voltage Low	VoL	0.9			V	
12	Rise / Fall Time	Tr			0.4	ns	
13	Aging		-3.0		+3.0	$\times 10^{-6}$	Frequency drift in first year
14	Enable	High or open=Enable					
15	Disable	Low or GND=Disable					
16	Shock	MIL-STD-202F method 213B, test condition: E, 1000G ½ sine wave					
17	Vibration	MIL-STD-202F method 204, 35G, 50 to 2000Hz					
18	Humidity	85% RH, +85 °C for 48 hours					
19	Solderability	MIL-STD-202F method 208E					
20	Fine leak	MIL-STD-883 method 1014, condition A					
21	Gross leak	MIL-STD-883 method 1014, condition C					



22	Center Voltage			1.65		V	
23	Pulling Range		±90			ppm	
24	Control Voltage Range		0.3		3.0	V	
25	Slope		Positive				
26	Linearity				10	%	
27	Modulation Bandwidth		±50			KHz	
28	VC Input Impedance		1000			Kohm	
29	RMS Phase Jitter			0.5		pSec	(12KHz - 20MHz)
30	Phase Noise @25°C			-85		dBc/Hz	100Hz
31				-115			1KHz
32				-125			10KHz
33				-140			100KHz

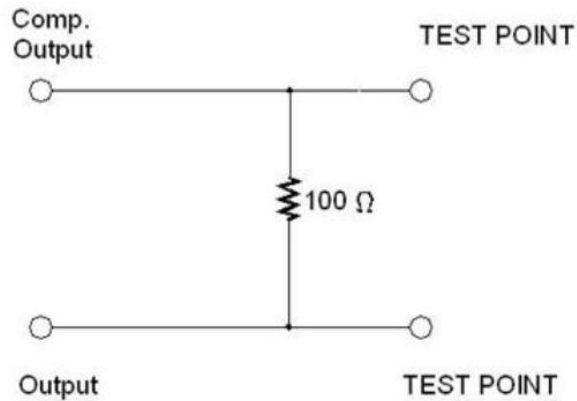
## 2、Mechanical Structure(mm)



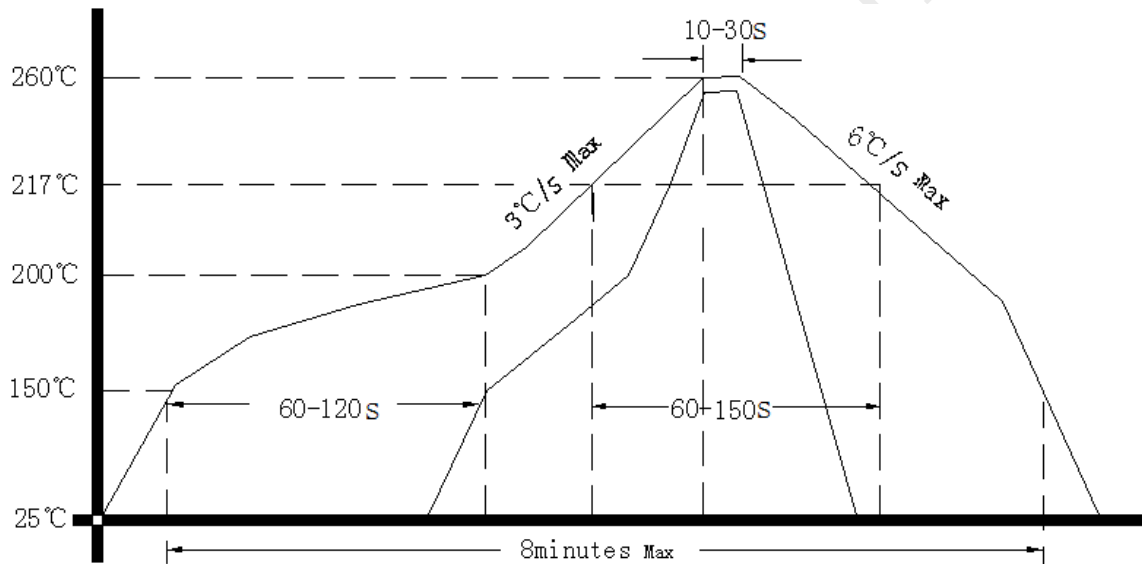
Note1: Tolerance ±0.20mm



### 3. Test Circuit



### 3、 Reflow Soldering Curve (RoHS)



### 4、 Package: Tape & Reel (mm)

