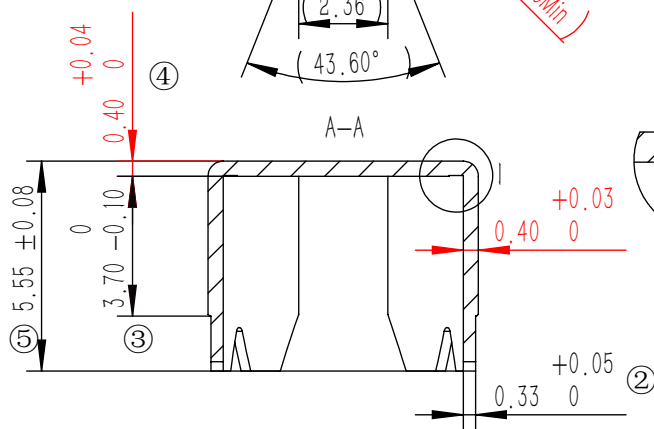
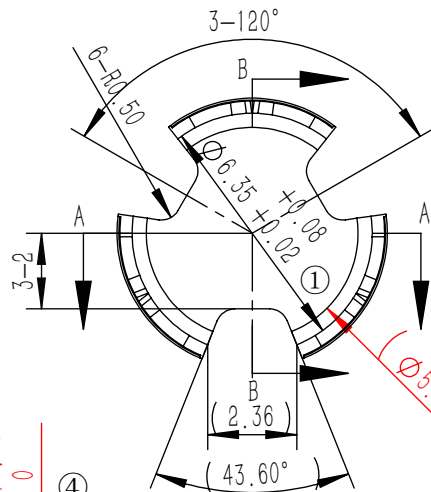
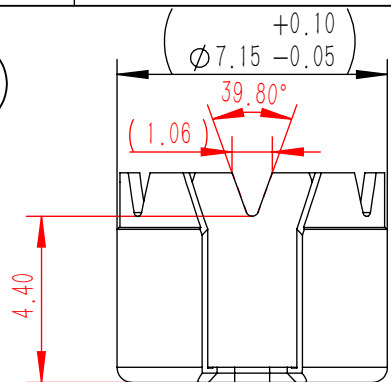
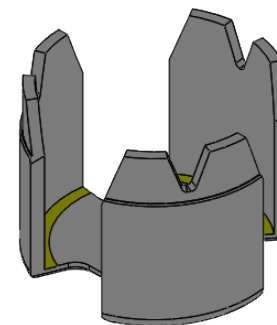
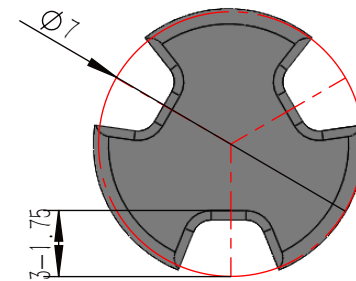
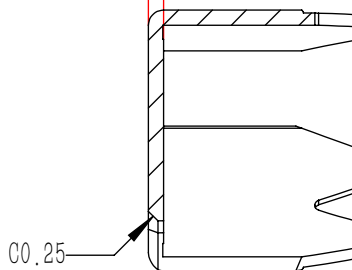


**RoHS COMPLIANT**



	0.05		0.05
-A-		//	0.05 A



REVISIONS				
REV.	ECN NO.	DESCRIPTION	DATE	REVISOR
A	-	Producing release	2021/3/29	ZC.Wu
B	0218	1.总高度公差由 $\pm 0.05$ 改为 $\pm 0.1$ ; 2.爪扣厚度公差由 $+0.03$ 改为 $+0.05/-0.02$	2021/5/8	ZC.Wu
C	0375	总高度由 $5.4 \pm 0.1$ 改为 $5.55 \pm 0.08$ , 爪扣厚度尺寸由 $0.25 \pm 0.05/-0.02$ 改为 $0.33 \pm 0.05/-0.02$	2022/2/18	ZC.Wu
D	20231218-0014	1.低厚公差由 $0.4 \pm 0.03/-0.02$ , 改为 $0.4 \pm 0.04/-0$ ; 2.优化清角槽尺寸	2023/12/18	ZC.Wu
E	1127	优化爪扣V尺寸, 增加底部平面度要求	2024/4/2	ZC.Wu

NOTES:

- MATERIAL: COLD ROLLED STEEL, TYPE SPCC-SD,  $0.4 \pm 0.02$  mm THICK;
- FINISH: SILVER, REFERENCE DP PLATING STANDARDS FILE PSF-00001 (LATEST REV.)
- ANY UNDIMENSIONED FEATURES TO MEET CAD FILE
- UNLESS OTHERWISE SPECIFIED, REMOVE ALL BURRS VISIBLE WITHOUT MAGNIFICATION
- INSIDE BORE BASE AND BOTTOM ARE TO BE 1.6 MICRONS AND FLATNESS OF 0.05mm. INTERNAL CORNER TO BE SHARP, RO. 20mm MAX.
- ALL DIMENSIONAL LIMITS APPLY AFTER FINISH.
- ALL THE NUMBER MARKING DIMENSION MUST BE INSPECTED BY IQC.

PART NAME: <b>腔体</b>	Designed: ZC. Wu		
DRAWING NO.: <b>HSF-00006</b>	Checked:		
DESCRIPTION: <b>HOUSING</b>	Approval:	TOLERANCES ON	
	The first angle projection:	DECIMALS	
	Sheet 1 of 1	ANGLES	
	Scale: 1:1	Unit: mm	.x $\pm 0.10$
			.xx $\pm 0.05$
			.xxx $\pm 0.02$
			$\pm 0.5^\circ$