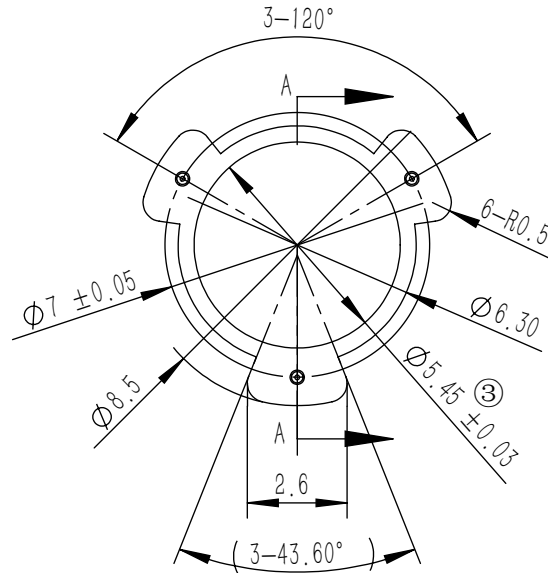
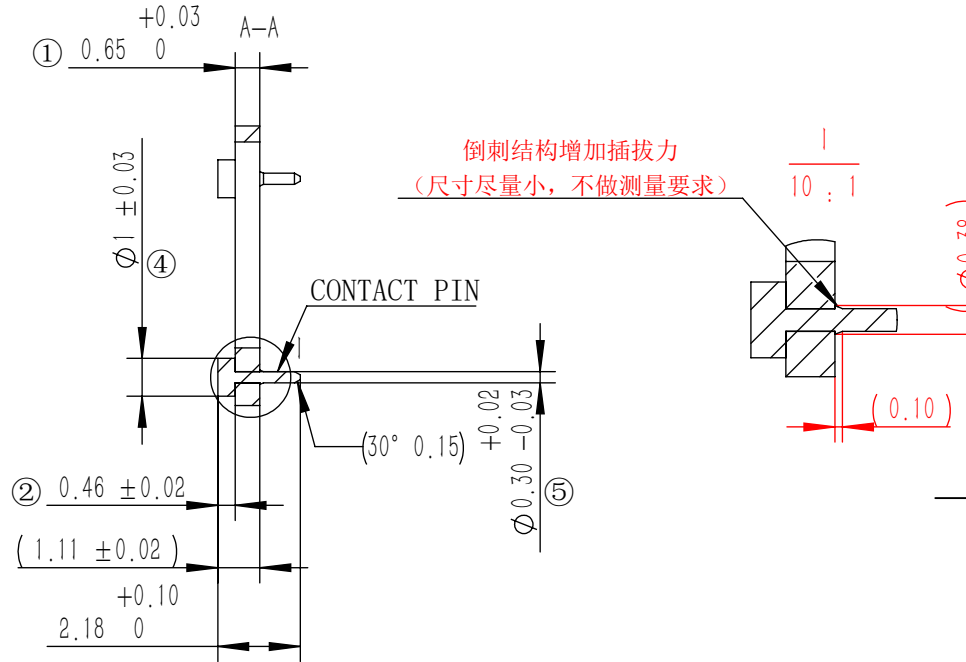


RoHS COMPLIANT



REVISIONS				
REV.	ECN NO.	DESCRIPTION	DATE	REVISOR
A	-	Producing release	2022/6/13	ZC. Wu
B	0570	铜钉大头高度尺寸由0.47改为0.48, 铜钉总高由2.1改为2.2 ^{+0.1}	2022/9/15	ZC. Wu
C	0610	黑胶厚度尺寸由0.65 ^{+0.03} _{-0.02} 改为0.65 ^{+0.03} ₀	2022/11/3	ZC. Wu
D	0942	优化铜钉结构	2023/10/17	ZC. Wu
E	1115	铜钉大头尺寸由0.48+0.02/-0.03改为0.46±0.02(同D1)	2024/1/29	ZC. Wu



倒刺结构增加插拔力
(尺寸尽量小, 不做测量要求)

ZERO REGRIND MATERIALS USED

NOTES:

1. MATERIAL:

CONTACT PIN: HBI-59, SILVER PLATED $Ag \geq 3.5 \mu m$

PLASTIC: LCP E6006L MR-B, PA46-GF35 OR PA9T (HALOGEN-FREE, FLAME RETARDANT RATING VO)

2. ALL DIMENSIONAL APPLY AFTER FINISH, NO FILLET R 0.1;

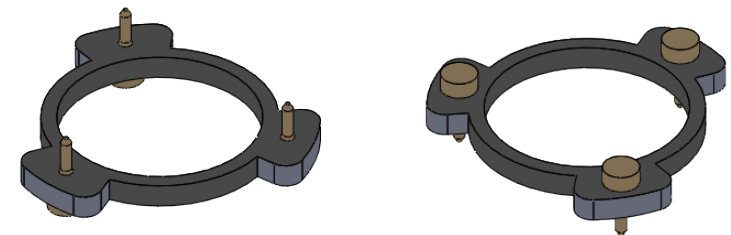
3. PUSH FORCE OF PIN IS NOT LESS THAN 0.25KGF.

4. ELECTRICAL:

HIPOT TEST, 500V DC, 5s

PIN CURRENT SPEC: $\leq 20 \mu A$ BETWEEN PIN AND INSULATOR

5. ALL NUMBER MARKING DIMENSION MUST BE MEASURED BY IQC;



PART NAME: 塑胶架带脚仔	Designed:	ZC. Wu	23/10/17	DAPU
	Checked:	ZC. Wu	23/10/17	
DRAWING NO. : PFF-00031	Approval:	KL. Wang	23/10/17	TOLERANCES ON
	The first angle projection: $\ominus \triangleleft$			
DESCRIPTION: PLASTIC FRAME	Sheet 1 of 1			DECIMALS
	Scale:	Unit:	-	ANGLES
	1:1	mm	-	$\pm 0.5^\circ$
				.x ± 0.10
				.xx ± 0.05
				.xxx ± 0.02