

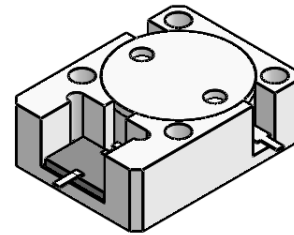


## DP3311S

### ENG PART:DP-19.1X25.4ID-2110T2170-CW

2110MHz to 2170MHz Single-Junction Drop-in Isolator

| REV. | DESCRIPTION                 | REVISOR | DATE     | APPROVED |
|------|-----------------------------|---------|----------|----------|
| 1    | Creating datasheet          | ZC.Wu   | 2024/7/1 | Nick     |
| 2    | Added attenuator spec. 30dB | ZC.Wu   | 2024/7/9 | Nick     |

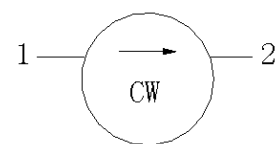


#### Applications:

- Wireless Infrastructure
- Power Amplifier

#### Features:

- Operating frequency range: 2110MHz to 2170MHz
- Operating temperature range: -40°C to +105°C
- Storage temperature range: -50°C to +125°C
- Small surface-mount package delivered on T&R
- BeOfree&RoHS compliant



Block Diagram



**Electrical Specifications:**

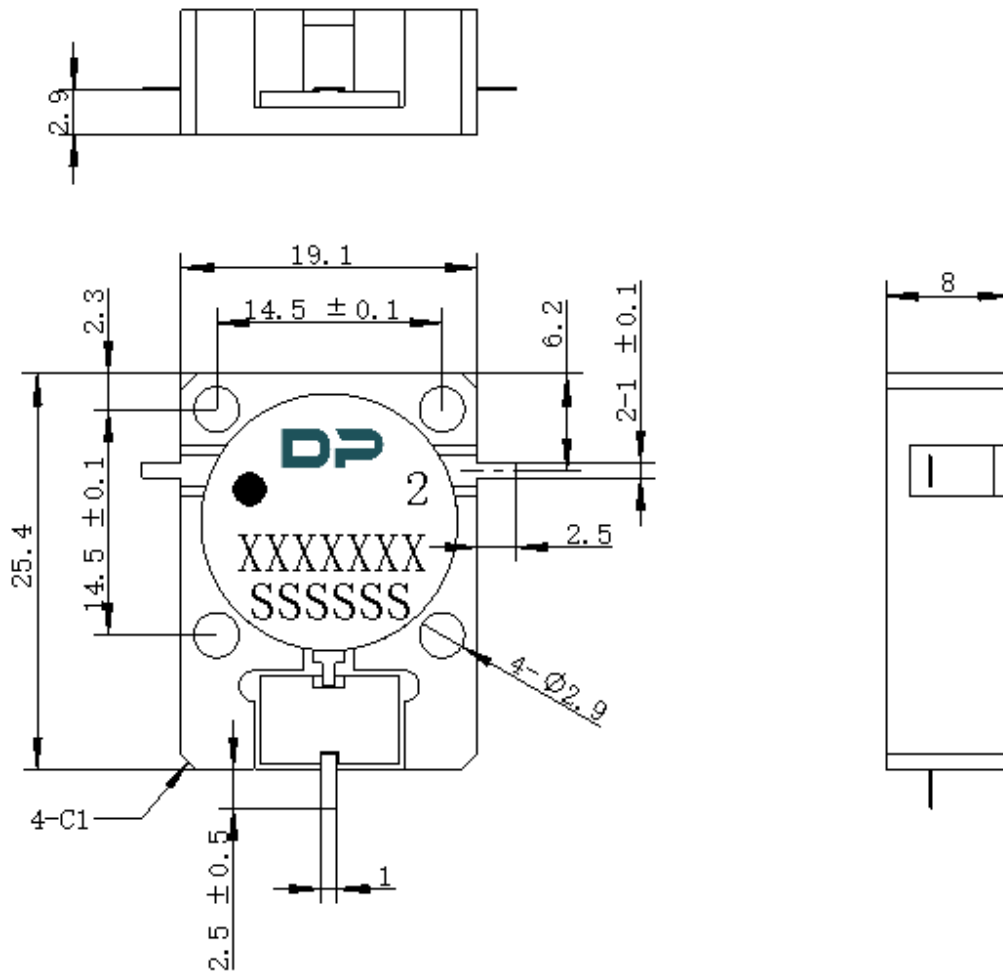
| ITEM                       | SPECIFICATION  |          |
|----------------------------|--|----------|
| Frequency                  | 2110~2170  | MHz      |
| Extend frequency           | -  | MHz      |
| Direction                  | CW   |          |
| Impedance                  | Typ: 50  | $\Omega$ |
| Insertion Loss (Max.)      | 0.20@25 $\pm$ 5 $^{\circ}$ C<br>0.25@-40~+105 $^{\circ}$ C | dB       |
| Isolation (Min.)           | 24@25 $\pm$ 5 $^{\circ}$ C<br>22@-40~+105 $^{\circ}$ C     | dB       |
| Return Loss (Min.)         | 24@25 $\pm$ 5 $^{\circ}$ C<br>22@-40~+105 $^{\circ}$ C     | dB       |
| 3rd IMD (Max.)             | -65@2X20W, CW tones spacing 1MHz                           | dBc      |
| 2nd harmonic Rejection     | -  | dB       |
| 3rd harmonic Rejection     | -  | dB       |
| Power FWD/REV/PEAK         | 150/100/1000   | W        |
| Termination/Attenuator     | 150/30   | W/dB     |
| Input Impedance ,real      | -  | $\Omega$ |
| Input Impedance ,imaginary | -  | $\Omega$ |

Notes:

1. Exposure to maximum rating conditions for extended periods may reduce device reliability. There is no damage to device with only one parameter set at the limit and all other parameters set at or below their nominal value. Exceeding any of the limits listed here may result in permanent damage to the device.
2. Performance is guaranteed under the conditions listed in this table and over the operating temperature range.
3. Performance will not degrade by > 10% with operatingtemperatureup to 130  $^{\circ}$ C.



### Mechanical Specifications:



Unit: Millimeters

#### Notes:

1. The circuit is silver-plated.
2. Tolerance  $\pm 0.2$  mm unless otherwise specified.
3. Co-planarity Specification: 0.1 mm maximum.
4. Part Number, Lot Code, and Port Designation are printed on the top side of device.
5. Part Number format shall be XXXXXXX
6. The SSSSSS on the label represents the serial number
7. The black dot on the label represents the input port