

**Customer Code:** \_\_\_\_\_

# DATASHEET

**DAPU P/N:** DPC5325M0000AC0JNA0

DAPU			Customer Approval
Drew	Audited	Approved	
Jieshu ZHENG	Jianhua LIN	Gangtao FENG	
Date:	2024/6/25		

Stamp, please! Thanks!

## Guangdong Dapu Telecom Technology Co.,Ltd

Bldg 5, SSL Modern Enterprise Accelerator Zone, Dongguan City, Guangdong Province, PRC China  
TEL: 0086-0769-88010888 FAX: 0086-0769-81800098



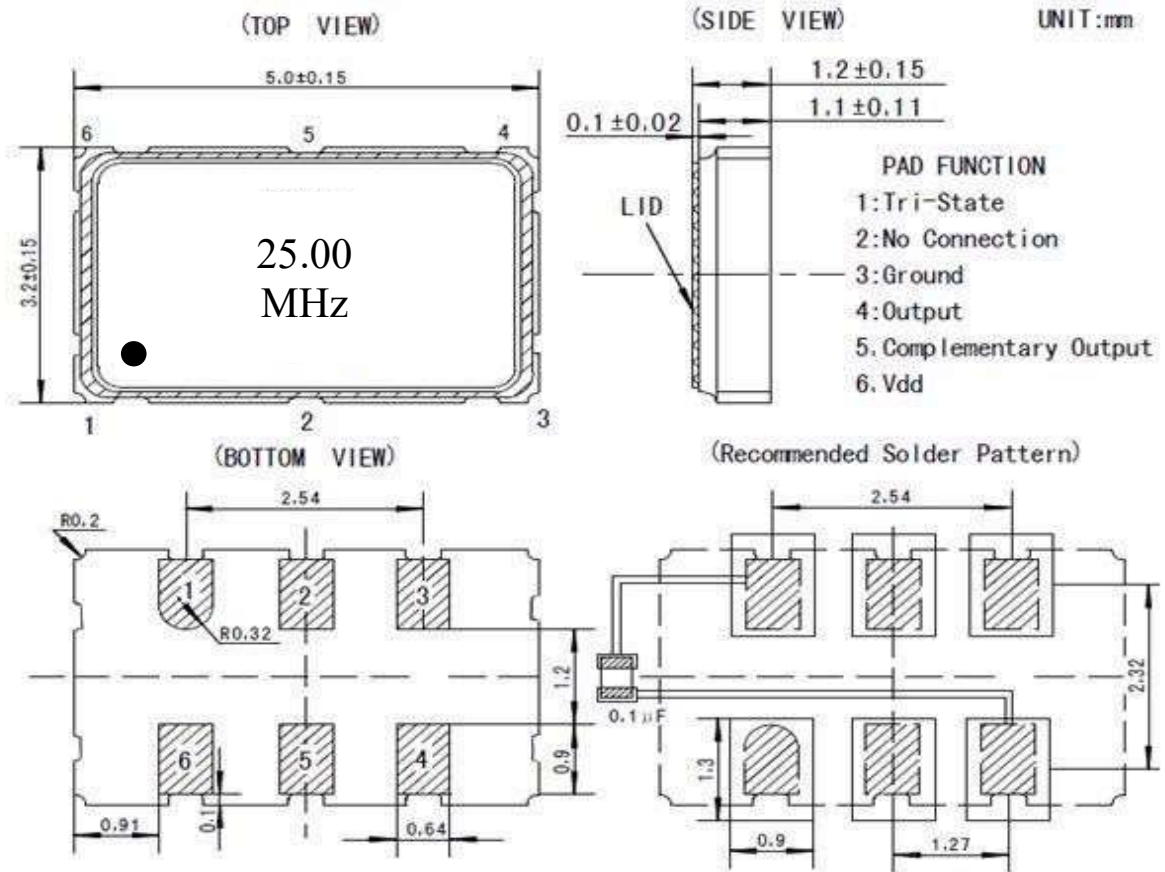
**Table of amendment**

Version	Revision contents	Prepared by	Revised date
1.0	The first issued	Jieshu ZHENG	2024/6/25

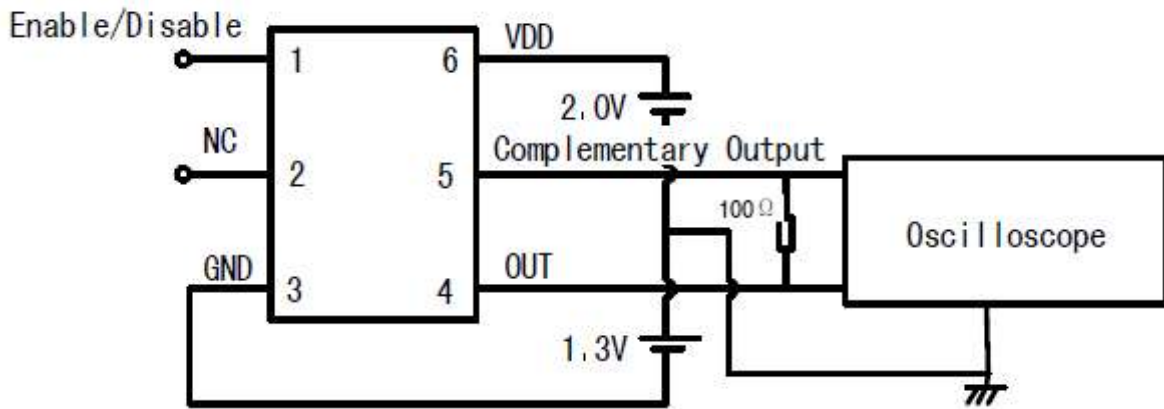
## 1、Electrical Parameter

MODEL :		DPC5325M0000AC0JNA0					
No.	Parameters	SYM.	Electrical Spec.				Notes
			Min.	Typ.	Max.	Units	
1	Nominal Frequency	FL	25.000			MHz	
2	Oscillation Mode	-	Fundamental				
3	Frequency Stability (Overall)	-	-25		25	ppm	Frequency stability includes frequency tolerance@25°C and frequency stability vs. operating temperature range and voltage variance and first year aging.
4	Operating Temperature	Topr	-40		85	°C	
5	Storage Temperature	Tstg	-55		125	°C	
6	Supply Voltage	VDD	2.97	3.3	3.63	V	V <sub>DD</sub> ±5%
7	Current	Icc			20	mA	At maximum supply voltage.
8	Output waveform	-	LVDS				
9	Output Load	CL	100			Ω	
10	Output Voltage High	VOH			1.6	V	
11	Output Voltage Low	VOL	0.9			V	
12	Rise Time	Tr			0.5	ns	
13	Fall Time	Tf			0.5	ns	
14	“H”Input Voltage	-	V <sub>cc</sub> *0.7			V	
15	“L”Input Voltage	-			V <sub>cc</sub> *0.3	V	
16	Duty Cycle	-	45~55			%	
17	Start-Up Time	Tstart			10	ms	Measured from the time VDD reaches its rated minimum value.
18	Phase Jitter(RMS)				400	fs	12kHz to 20MHz
19	Phase Noise	-			-60	dBc/Hz	10Hz offset
					-95		100Hz offset
					-120		1KHz offset
					-135		10KHz offset
					-143		100KHz offset
					-148		1MHz offset

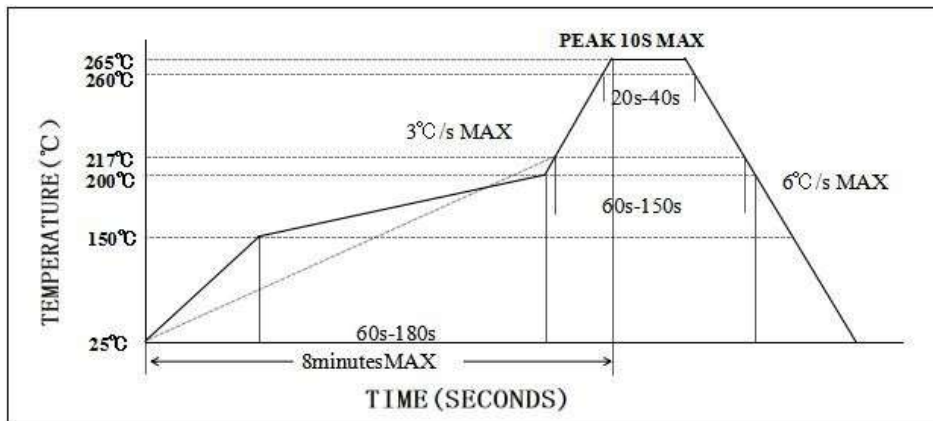
## 2、Mechanical Structure



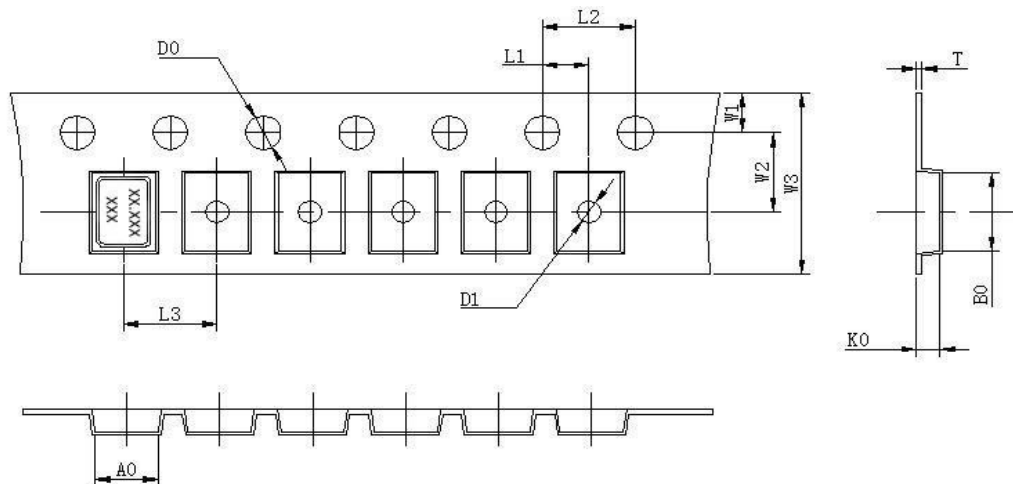
### 3、 Test Circuit

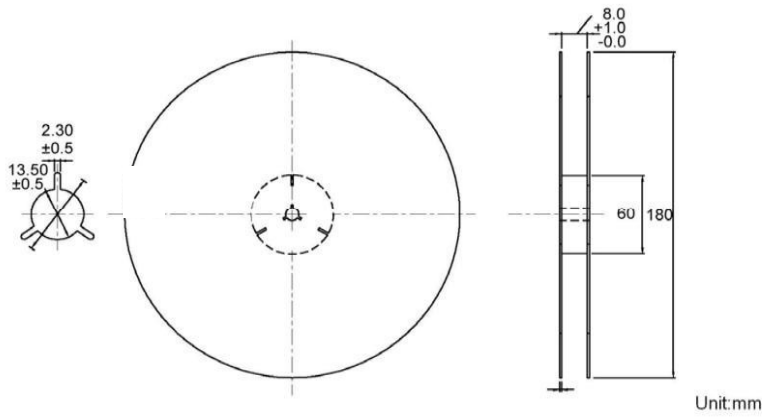


### 4、 Reflow



### 5、 Package: Tape & Reel (mm)





L1	$2.00 \pm 0.1$
L2	$4.00 \pm 0.1$
L3	$4.00 \pm 0.1$
D0	$1.55 \pm 0.05$
D1	$1.20 \pm 0.5$
W1	$1.75 \pm 0.1$
W2	$3.50 \pm 0.1$
W3	$8.00 \pm 0.2$
A0	$2.7 \pm 0.1$
B0	$3.4 \pm 0.1$
K0	$1.40 \pm 0.1$
T	$0.25 \pm 0.05$