

Customer Code: _____

DATASHEET

DAPU P/N: DPHC100M0001

| DAPU | | | Customer Approval |
|------------------|---------|----------|------------------------|
| Drew | Audited | Approved | Stamp, please! Thanks! |
| | | | |
| Date: 2023.08.10 | | | |

Guangdong Dapu Telecom Technology Co.,Ltd

Building 5, No.24, Industrial East Road, Songshanhu Park, Dongguan, Guangdong, P.R. China

TEL: 0086-0769-88010888 FAX: 0086-0769-81800098

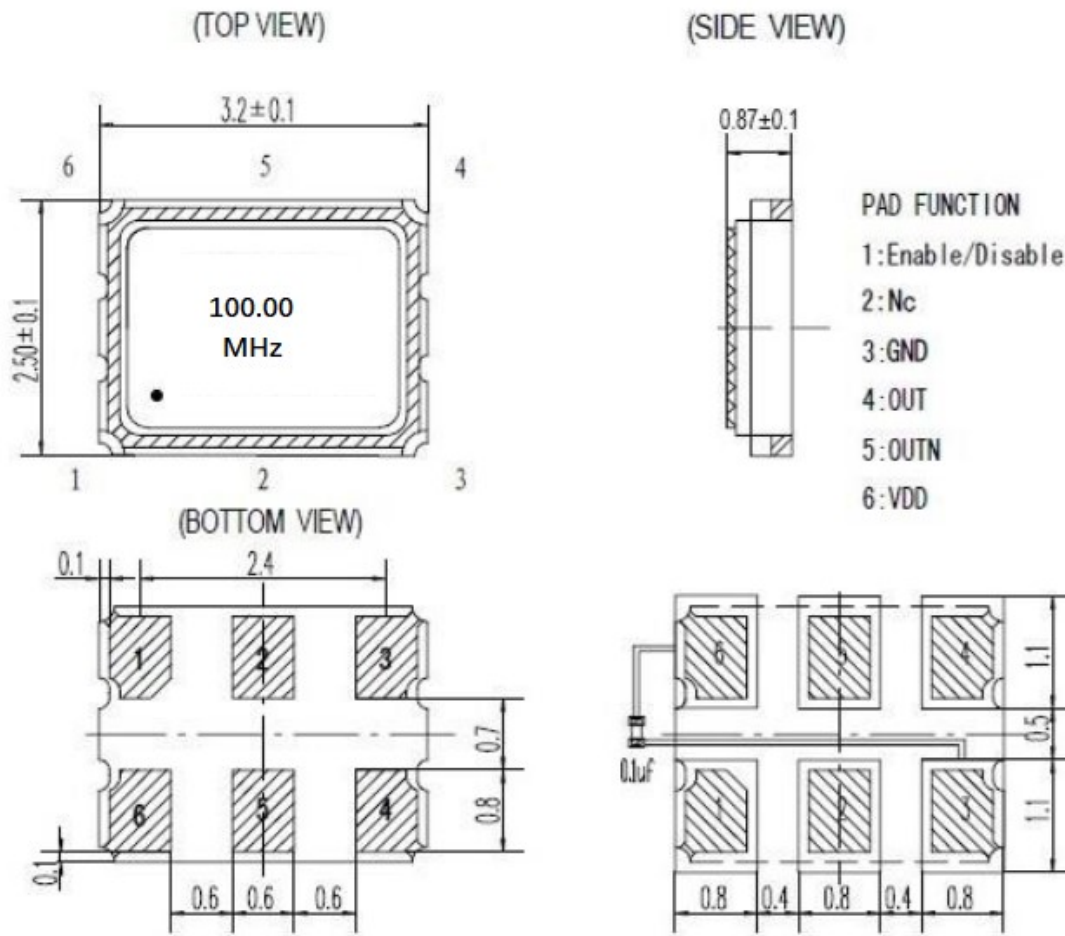


1、Electrical Parameters

| MODEL: DPHC100M0001 | | | | | | | |
|---------------------|---|-------|------------------------|------|---------|--------------------|-------------------|
| No. | Parameters | SYM | Electrical Spec. | | | | Notes |
| | | | Min. | Typ. | Max. | Units | |
| 1 | Nominal Frequency | FL | 100.00 | | | MHz | |
| 2 | Output Waveform | | HCSL | | | | |
| 3 | Output Load: | CL | 50 | | | Ω | |
| 4 | Symmetry | - | 45 | | 55 | % | |
| 5 | Frequency Tolerance | FT | -10 | | +10 | $\times 10^{-6}$ | |
| 6 | Frequency Tolerance vs. Operating Temperature Range | TC | -15 | | +15 | $\times 10^{-6}$ | |
| 7 | Operating Temperature | Topr | -40 | | +85 | $^{\circ}\text{C}$ | |
| 8 | Storage Temperature | Tstg | -55 | ~ | +125 | $^{\circ}\text{C}$ | |
| 9 | Supply Voltage | Vcc | 2.97 | 3.3 | 3.63 | V | |
| 10 | Supply Current | Icc | - | - | 40 | mA | |
| 11 | Aging First Year | | -3 | | +3 | $\times 10^{-6}$ | |
| 12 | Start up time | | - | - | 10 | ms | |
| 13 | Rise/ Fall Time | Tr/Tf | - | - | 0.5 | ns | 20%-80% Vdd Level |
| 14 | “H” Output Voltage | VOH | 550 | | 850 | mV | |
| 15 | “l” Output Voltage | VOL | -150 | 0 | 150 | mV | |
| 16 | Output Enable | | 0.7*Vdd or Floating | - | - | V | Pin 1 Tri-state |
| 17 | Output Disable | | - | - | 0.3*Vdd | V | |
| 18 | Jitter RMS | | - | - | 0.15 | ps | |

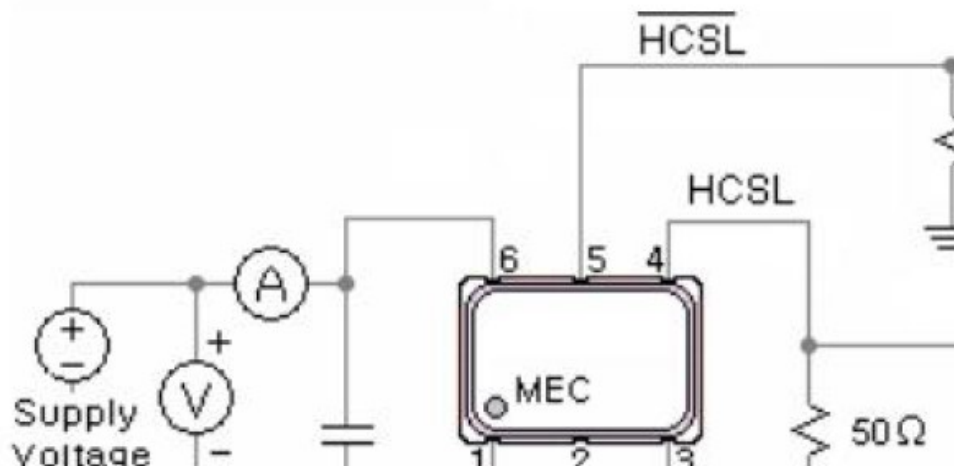


2、 Mechanical Structure(mm)



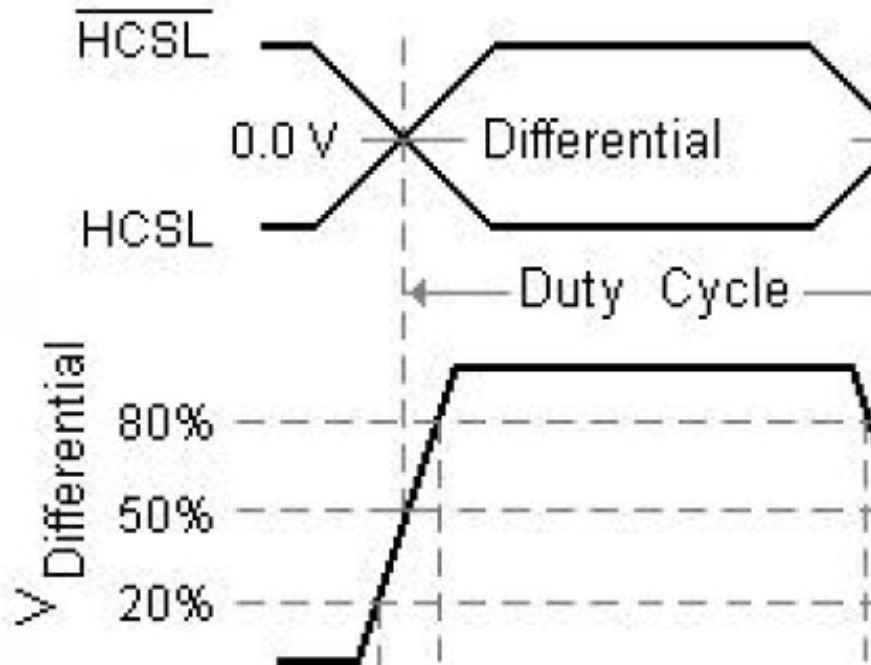
Note1: Tolerance ±0.2mm without mark

3、 Test Circuit

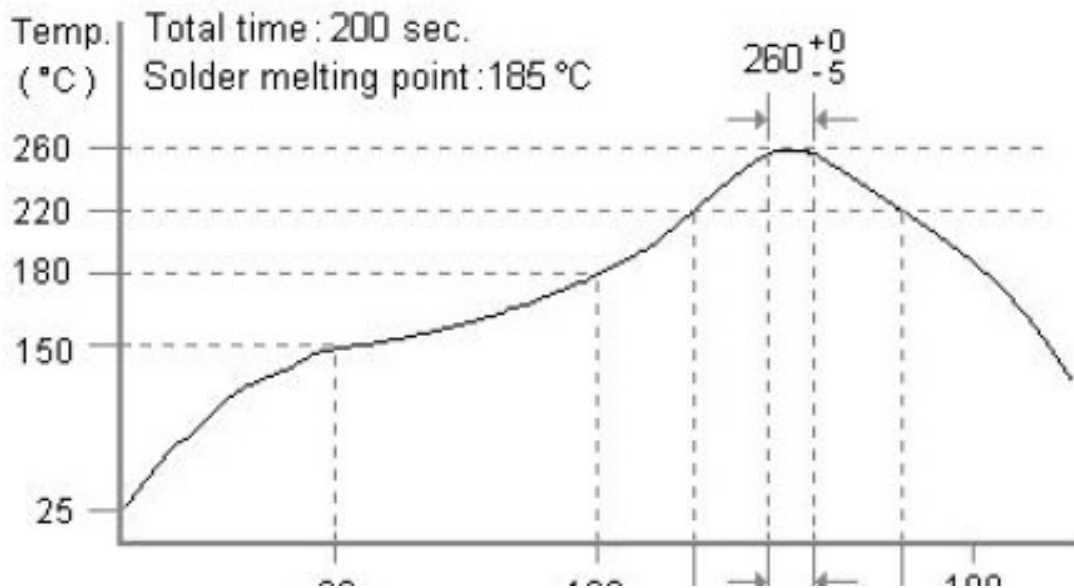




4、 Output Waveform(CMOS Load)



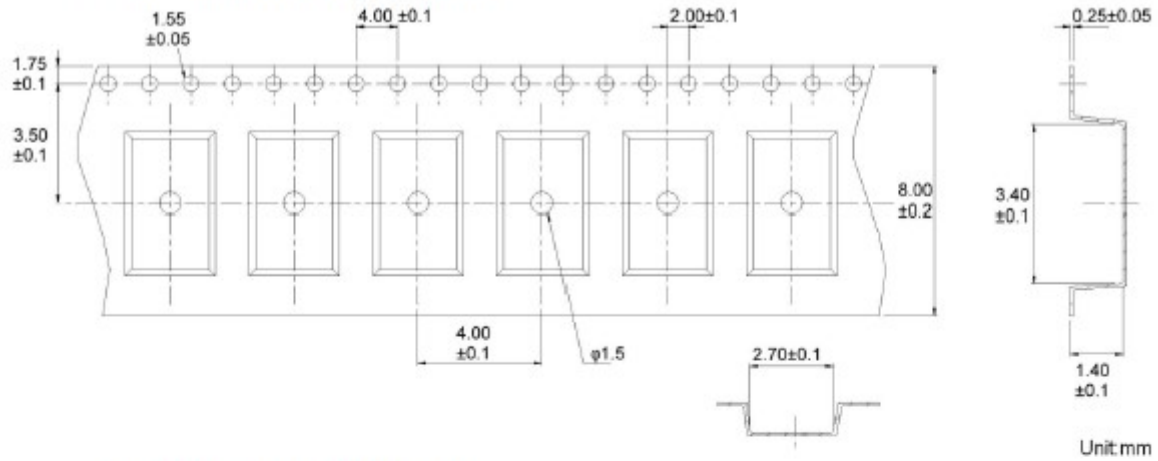
5、 Reflow Soldering Curve (RoHS)



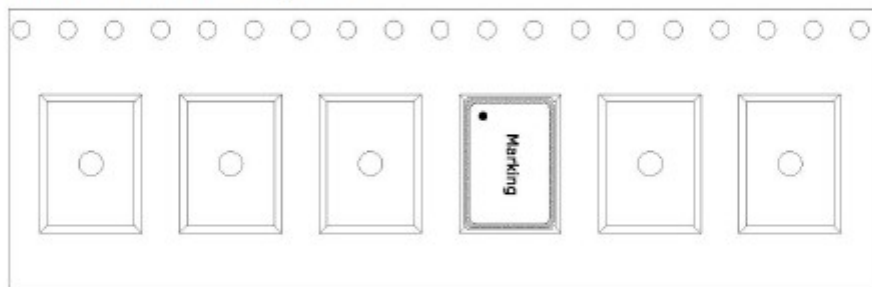


6、 Package: Tape & Reel (mm)

➤ TAPE (CARRIER) DIMENSIONS



➤ THE DIRECTION OF PACKING



➤ REEL DIMENSIONS

