

Customer Code: _____

DATASHEET

DAPU P/N: DPZ53200M000AB30NA0

DAPU			Customer Approval
Drew	Audited	Approved	
Jieshu ZHENG	Jianhua LIN	Gangtao FENG	
Date:	2024/1/25		
			Stamp, please! Thanks!

Guangdong Dapu Telecom Technology Co.,Ltd

Bldg 5, SSL Modern Enterprise Accelerator Zone, Dongguan City, Guangdong Province, PRC China
TEL: 0086-0769-88010888 FAX: 0086-0769-81800098

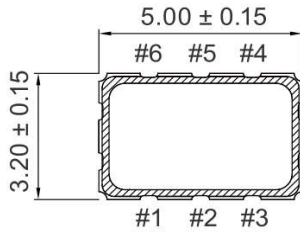
1、Electrical Parameter

MODEL:		DPZ53200M000AB30NA0					
No.	Parameters	SYM.	Electrical Spec.				Notes
			Min.	Typ.	Max.	Units	
1	Nominal Frequency	FL	200.000			MHz	
2	Oscillation Mode	-	-				
3	Frequency Tolerance	-	-20		20	ppm	At 25°C
4	Frequency Stability	-	-50		50	ppm	Over Operating Temperature Range (Reference 25 °C)
5	Operating Temperature	Topr	-55		125	°C	
6	Storage Temperature	Tstg	-55		125	°C	
7	Supply Voltage	V _{DD}	3.135	3.3	3.465	V	
8	Input Current	I _{cc}			40	mA	
9	Output waveform	-	LVDS				
10	Output Load	CL	100Ω				
11	Output Voltage High	V _{OH}			1.6	V	
12	Output Voltage Low	V _{OL}	0.9			V	
13	Rise Time	T _r			6	ns	20% -80% V _{DD} Level
14	Fall Time	T _f			6	ns	80% -20% V _{DD} Level
16	Tri-State Output Enable	-	0.7			V _{DD}	Pin 1, OE
17	Tri-State Output Disable	-			0.3	V _{DD}	Pin 1, OE
18	Duty Cycle	-	45~55			%	@50% Level

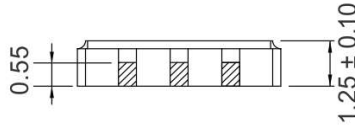
2、 Mechanical Structure

2.1 Dimensions

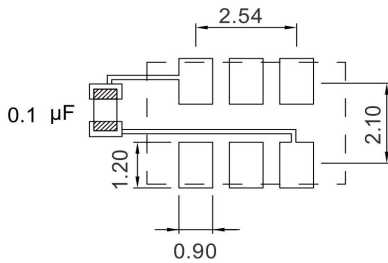
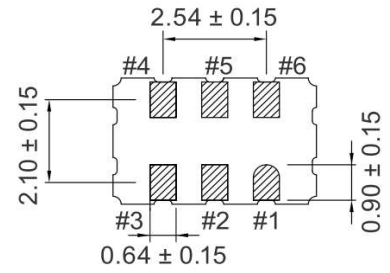
[TOP VIEW]



[SIDE VIEW]

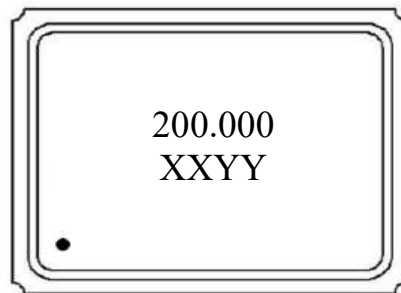


[BOTTOM VIEW]



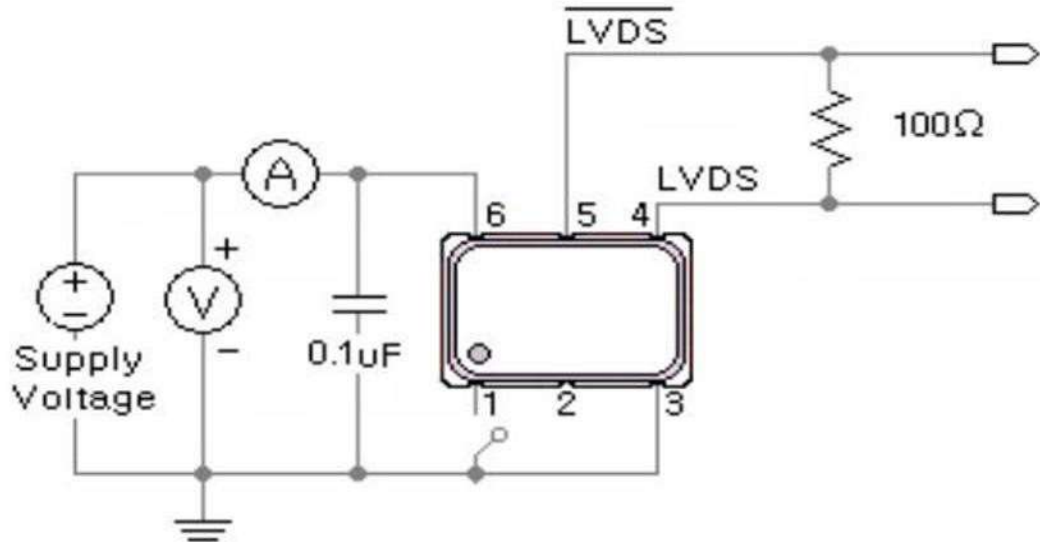
Pin	Function
1	Tri-State
2	NC
3	GND
4	Output
5	Comp.Output
6	V _{DD}

2.2 Marking



200.000 ----- Frequency
 XXYY ----- Manufactured day: XX YY
 Year Week
 ● ----- Pin 1

3、 Test Circuit



4、 Reflow Soldering Curve (RoHS)

