

Travelling Merchant: \_\_\_\_\_

# DATASHEET

Standard: DPZ22100M000BL10NA0

Plot			The Label
Drew	Audited	Approved	Stamp, please! Thanks!
Jieshu ZHENG	Jianhua LIN	Gangtao FENG	
Date: 2024.01.04			

## Guangdong Dapu Telecom Technology Co.,Ltd

Bldg 5, SSL Modern Enterprise Accelerator Zone, Dongguan City, Guangdong Province, PRC China

TEL: 0086-0769-88010888 FAX: 0086-0769-81800098

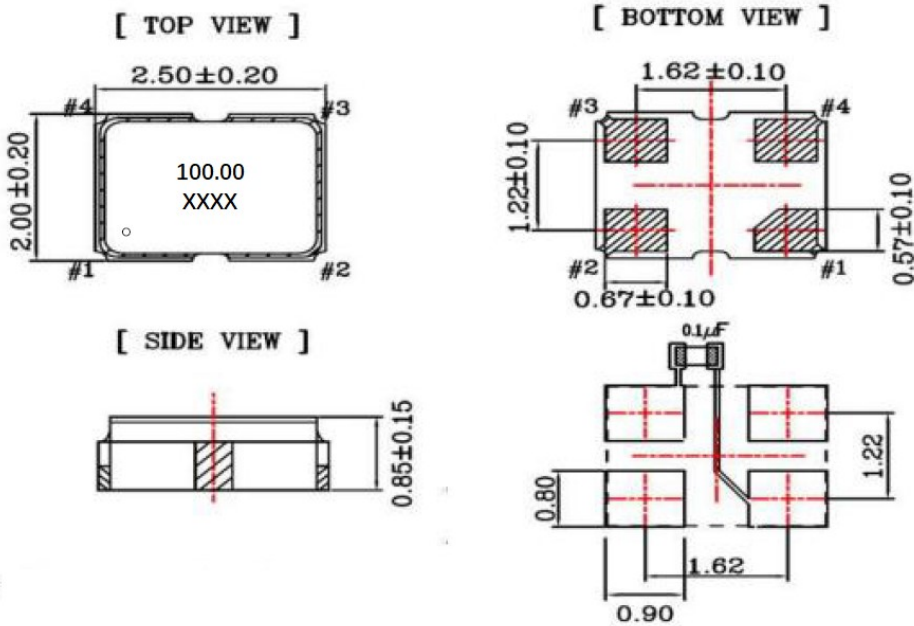


## 1、Electrical Parameters

MODEL: DPZ22100M000BL10NA0							
No.	Parameters	SYM.	Electrical Spec.				Notes
			Min.	Typ.	Max.	Units	
1	Nominal Frequency	FL	100.00			MHz	3 <sup>rd</sup>
2	Frequency Tolerance	-	-10		+10	$\times 10^{-6}$	
3	Frequency Stability	-	-40	~	+40	$\times 10^{-6}$	
4	Aging	-	-3		+3	$\times 10^{-6}/\text{yr.}$	First Year
5	Operating Temperature	Topr	-40	~	+105	$^{\circ}\text{C}$	
6	Storage Temperature	Tstg	-55	~	+125	$^{\circ}\text{C}$	
7	Supply Voltage	V <sub>DD</sub>	1.8 $\pm$ 10%			V	
8	Input Current	I <sub>cc</sub>	-	-	25	mA	
9	Output waveform	-	CMOS			-	
10	Output Load:	CL	-	-	15	pF	
11	Symmetry (Duty ratio)	TH/T	45	50	55	%	
12	Start-up Time	T <sub>osc</sub>	-	-	10	ms	
13	Rise/ Fall Time	T <sub>r</sub> / T <sub>f</sub>	-	-	5	ns	10%~90%V <sub>DD</sub> Level
14	Output Voltage High	VoH	90%V <sub>DD</sub>	-	-	V	
15	Output Voltage Low	Vol	-	-	10%V <sub>DD</sub>	V	
16	Output Enable	-	0.7V <sub>DD</sub> or floating	-	-	V	Pin 1 Tri-state
17	Output Disable	-	-	-	0.3V <sub>DD</sub>	V	
18	Phase Noise @25 $^{\circ}\text{C}$	-	-	-88	-	dBc/Hz	10Hz
		-	-	-117	-		100Hz
		-	-	-140	-		1KHz
		-	-	-154	-		10KHz
		-	-	-162	-		100KHz
		-	-	-164	-		1MHz
		-	-	-165	-		10MHz
		-	-	-165	-		20MHz



## 2、Mechanical Structure(mm)

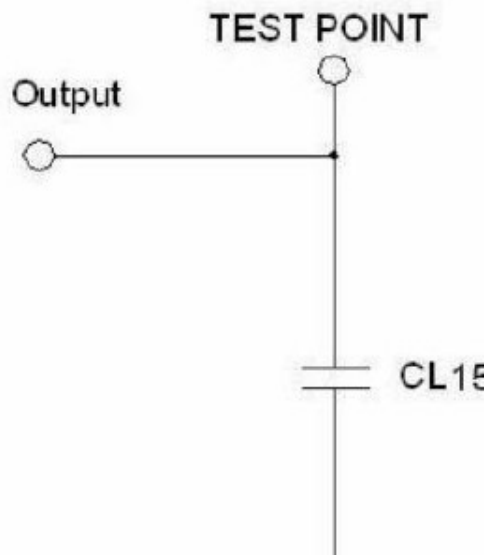


Pin	Function
#1	Tri-State
#2	GND
#3	Output
#4	V <sub>DD</sub>

**Note1:** Tolerance ±0.2mm without mark

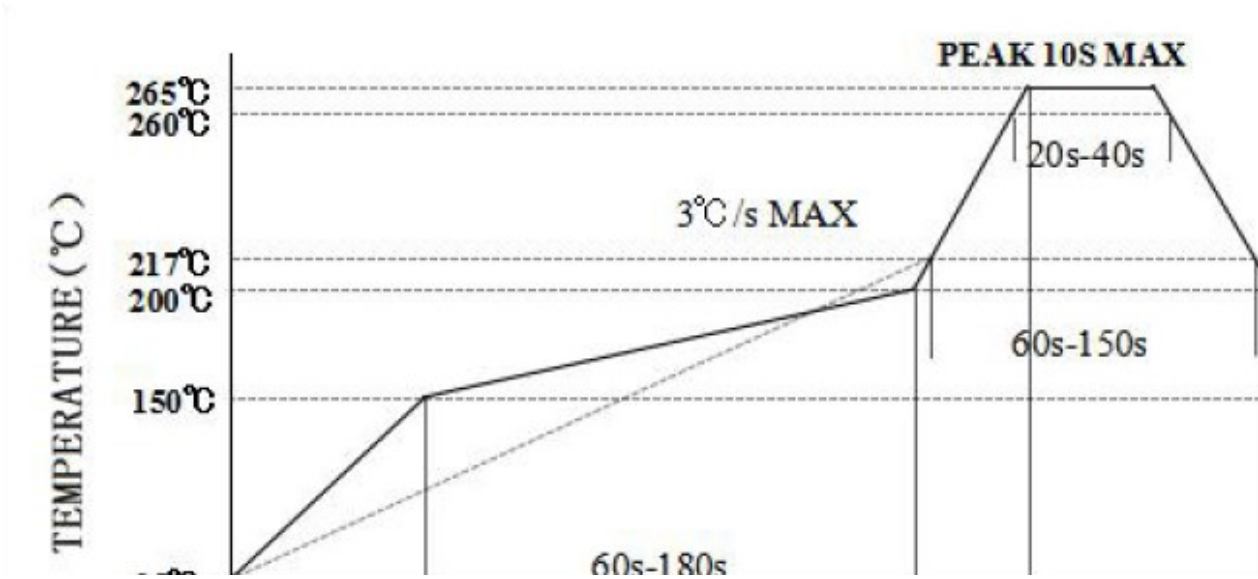
**Note2:** The first two XX representative: year  
After two XX representative: week

## 3、Test Circuit

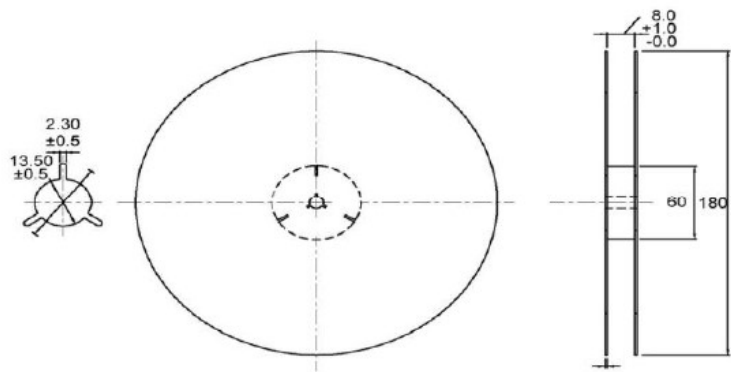
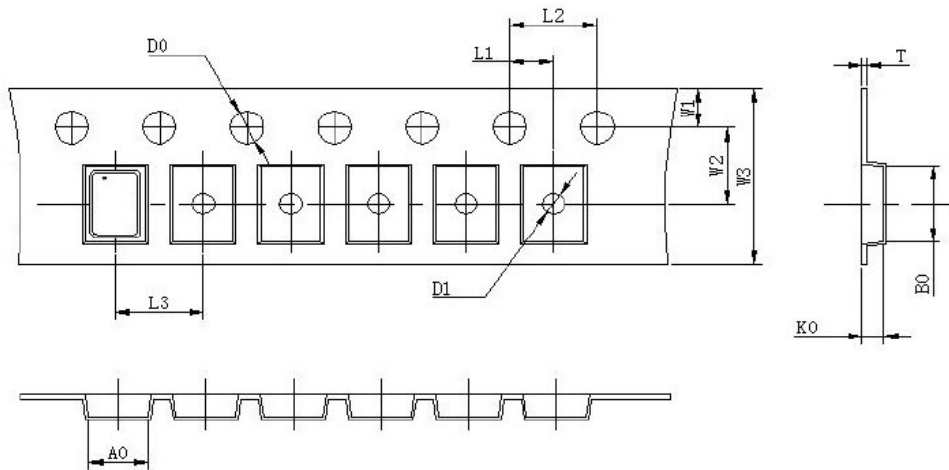




### 4、 Reflow Soldering Curve (RoHS)



### 5、 Package: Tape & Reel (mm)



L1	2.00±0.1
L2	4.00±0.1
L3	4.00±0.1
D0	1.55±0.05
D1	1.20±0.5
W1	1.75±0.1
W2	3.50±0.1
W3	8.00±0.2
A0	2.25±0.1
B0	2.7±0.1
K0	1.45±0.1
T	0.25±0.05