

Customer Code : \_\_\_\_\_

# DATASHEET

DAPU P/N:     **T22-B582-26.00MHz**    

Customer P/N: \_\_\_\_\_

DAPU			Customer Approval
Drew	Audited	Approved	Stamp, please! Thanks!
Date: 2022.09.02			

## Guangdong Dapu Telecom Technology Co.,Ltd

Building 5, No.24, Industrial East Road, Songshanhu Park, Dongguan, Guangdong, P.R. China

TEL: 0086-0769-88010888 FAX: 0086-0769-81800098



### Table of amendment

Version	Revision contents	Prepared by	Revised date
1.0	The first issued	<i>Amway</i>	2022.09.02



## 1. Electrical Parameters

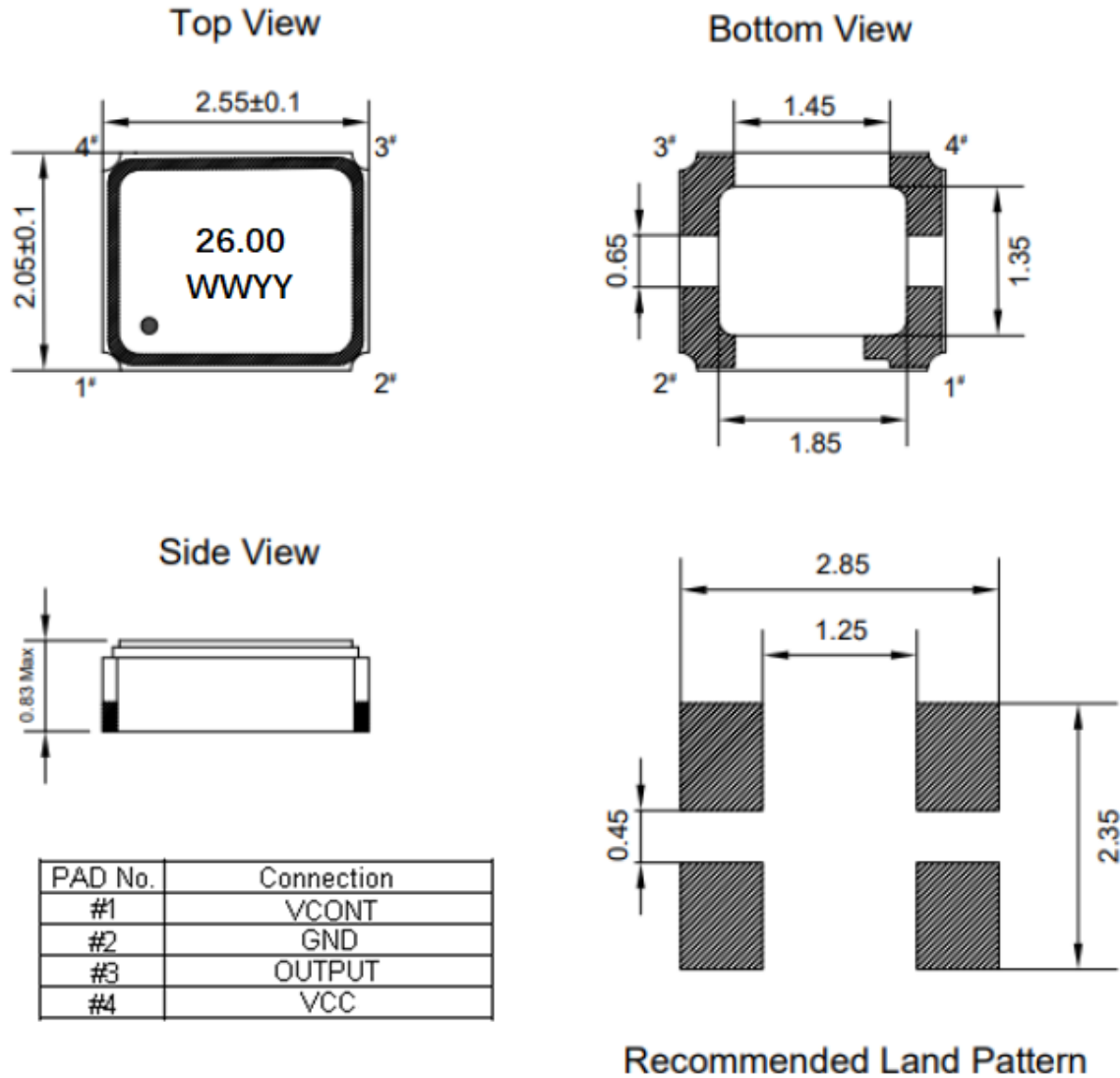
MODEL: T22-B582-26.00MHz						
Item	Description	Parameters			Unit	Test Condition
		Min.	Typ.	Max.		
Output	Frequency	26.00			MHz	
	Output Waveform	Clipped Sine Wave				
	V <sub>p-p</sub>	0.8			V	
	Symmetry	40		60	%	GND level(DC cut)
	Start up time			2	ms	@90% of final V <sub>out</sub> level
	Load	10KΩ//10pF				
Frequency Stabilities	Frequency Tolerance vs. Operating Temperature Range	-0.5		+0.5	× 10 <sup>-6</sup>	T <sub>A</sub> varied from -30°C to 85°C, measurement referenced to frequency observed with T <sub>A</sub> =25°C, V <sub>cc</sub> =2.8V, O <sub>load</sub> =10KΩ//10pF, temperature variable speed less than 2°C per minute.
		-2.5		+2.5	× 10 <sup>-6</sup>	T <sub>A</sub> varied from -40°C to -30°C, measurement referenced to frequency observed with T <sub>A</sub> =25°C, V <sub>cc</sub> =2.8V, O <sub>load</sub> =10KΩ//10pF, temperature variable speed less than 2°C per minute.
	Initial Frequency Tolerance	-2		+2	× 10 <sup>-6</sup>	T <sub>A</sub> =25°C, V <sub>c</sub> =1.4V, After 2 times reflow, Ref.to nominal frequency, please leave after reflow in 2h or more at room ambient.
	Frequency Tolerance vs. Supply Voltage	-0.2		+0.2	× 10 <sup>-6</sup>	measurement referenced to frequency observed T <sub>A</sub> =25°C, V <sub>cc</sub> varied from 2.66V to 2.94V, V <sub>c</sub> =1.4V, and O <sub>Load</sub> =10KΩ//10pF.
	Frequency Tolerance vs. Load	-0.2		+0.2	× 10 <sup>-6</sup>	10% load change measurement referenced to frequency observed with T <sub>A</sub> =25°C, V <sub>cc</sub> =2.8V, V <sub>c</sub> =1.4V, and O <sub>Load</sub> =10KΩ//10pF.
	Aging Tolerance 1 Year	-1		+1	× 10 <sup>-6</sup>	T <sub>A</sub> =Room ambient.
Power Supply	Operating Current			1.5	mA	@25°C, V <sub>cc</sub> =2.8V.
	Supply Voltage	2.66	2.8	2.94	V	
Voltage Control Characteristics	Frequency Tuning Range	-15		-9	× 10 <sup>-6</sup>	V <sub>c</sub> =0V. measurement referenced to V <sub>c</sub> =1.4V.
		-2		+2	× 10 <sup>-6</sup>	V <sub>c</sub> =1.4V. measurement referenced to exactly 26.00MHz.
		+9		+15	× 10 <sup>-6</sup>	V <sub>c</sub> =2.8V. measurement referenced to V <sub>c</sub> =1.4 V.
	Slope	Positive				
	Input Impedance	500			KΩ	



Phase Noise	Phase Noise			-80	dBc/Hz	10Hz
				-105		100Hz
				-130		1KHz
				-140		10KHz
				-150		100KHz
				-150		1MHz
Environmental Conditions	Operable Temperature	-40		+85	°C	
	Storage Temperature	-40		+85	°C	
	ESD Level	Human Body Model, class2: 2000V to 4000V; ANSI/ESDA/JEDEC JS-001-2010.				
		Machine Model, class B: 200V to 400V; JEDEC JESD22-A115C.				
	Moisture Sensitivity Level	Level 1.				
	Vibration	Test Condition: 0.75mm ;acceleration:10g;10Hz~2000Hz, one cycle per 30 min, test 2 hour. (3 times for each 3 directions X ,Y , Z ) .IEC 68-2-06 Test Fc.				
Shock	100g; 6ms; half sine wave (3 times for each 3 directions X ,Y , Z ),IEC 68-2-27 Test Ea/Severity 50A.					
Full Package Storage	Relative humidity (%)	20%~70%				
	Temperature (°C)	-10~35°C				



## 2. Mechanical Structure(mm)

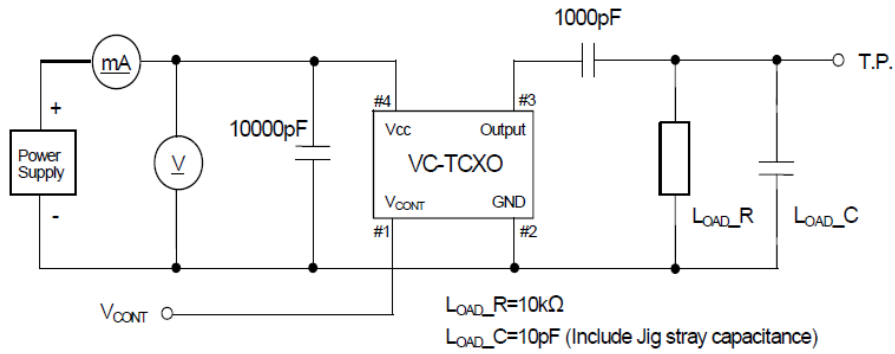


**Note1:** Tolerance ±0.2mm without mark

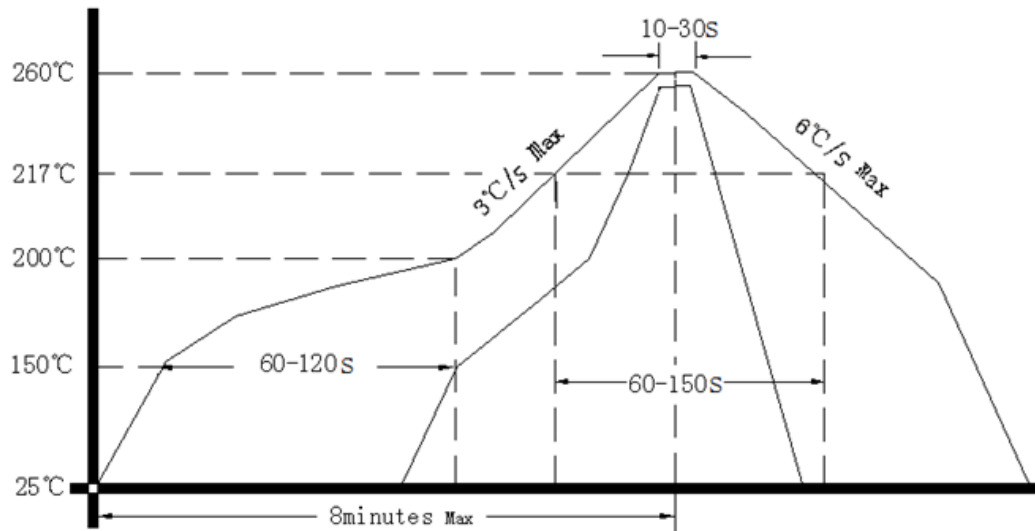
**Note2:** The WW representative: week  
After YY representative: year



### 3. Test Circuit



### 4. Reflow Soldering Curve (RoHS)



**Note:** If soldering with a hot air gun, ensure the temperature < 320°C , soldering time < 15 seconds.

### 5. Package: Tape & Reel (mm)

