

Customer Code : \_\_\_\_\_

# DATASHEET

DAPU P/N: DPBA10000004

Plot			The Label
Drew	Audited	Approved	Stamp, please! Thanks!
Ella	Carry	Jason	
Date: 2023.11.21			

## Guangdong Dapu Telecom Technology Co.,Ltd

Building 5, No.24, Industrial East Road, Songshanhu Park, Dongguan, Guangdong, P.R. China

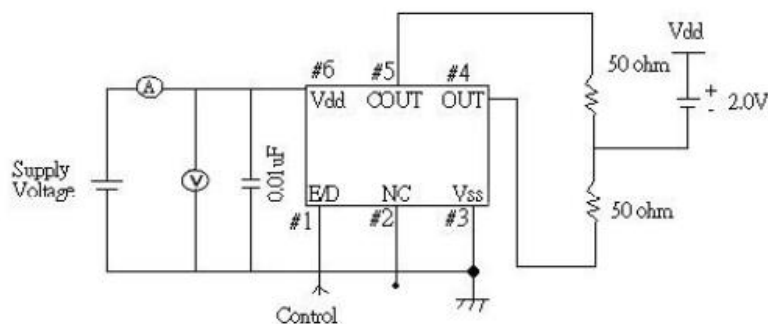
TEL: 0086-0769-88010888 FAX: 0086-0769-81800098



## 、 Electrical Parameters

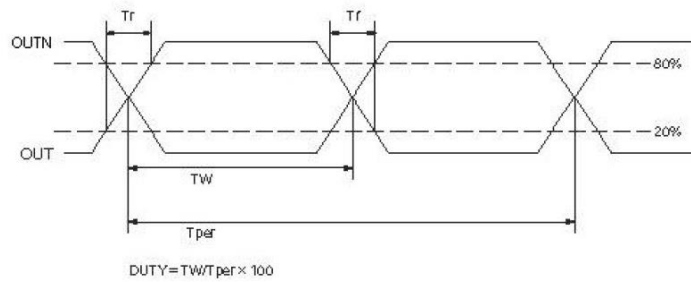
MODEL: DPBA1000004							
No.	Parameters	SYM.	Electrical Spec.				Notes
			Min.	Typ.	Max.	Units	
1	Nominal Frequency	FL	100.00			MHz	
2	Output Waveform		LVPECL				
3	Supply Voltage		3.135	3.3	3.465	V	
4	Frequency Stability	F-stab	-50		+50	$\times 10^{-6}$	Inclusive of initial tolerance, operating temperature, rated power supply voltage, and load variations
5	Operating Temperature	T-opr	-40	~	+85	°C	
6	Storage Temperature	T-stg	-55	~	+125	°C	
7	Aging(year)		-3		+3	$\times 10^{-6}$	
8	Current Consumption	I <sub>dd</sub>	-		80	mA	
9	Output Load				50	$\Omega$	VDD-2.0V
10	Rise/Fall Time	Tr、Tf			1	ns	20%~80% output swing level
11	Duty Cycle	DC	45		55	%	
12	Output Voltage High	VOH	2.275			V	
13	Output Voltage Low	VOL			1.680	V	
14	Start up Time	T <sub>start</sub>	-		10	ms	
15	Phase Jitter RMS				1	ps	12KHz-40MHz
16	Phase Jitter RMS		-		0.17	ps	10KHz-1MHz
17	Shock	Free Drop from 75cm height on a hard wood board for 3 time.					
	Vibration	10~55Hz 1.5mm p-p 1~2min/CICLE,X,Y,Z 2H for each plane					
	Aging	85°C $\pm$ 3°C 720H(No BIAS)					
	High Humidity	40°C $\pm$ 2°C X 90%-95% 96H(No BIAS)					
	Temperature Cycle	-40°C~85°C,30min X 10 Cycle					
	Solderability	MIL-STD-202,Method 208					

## 2、 Test Circuit

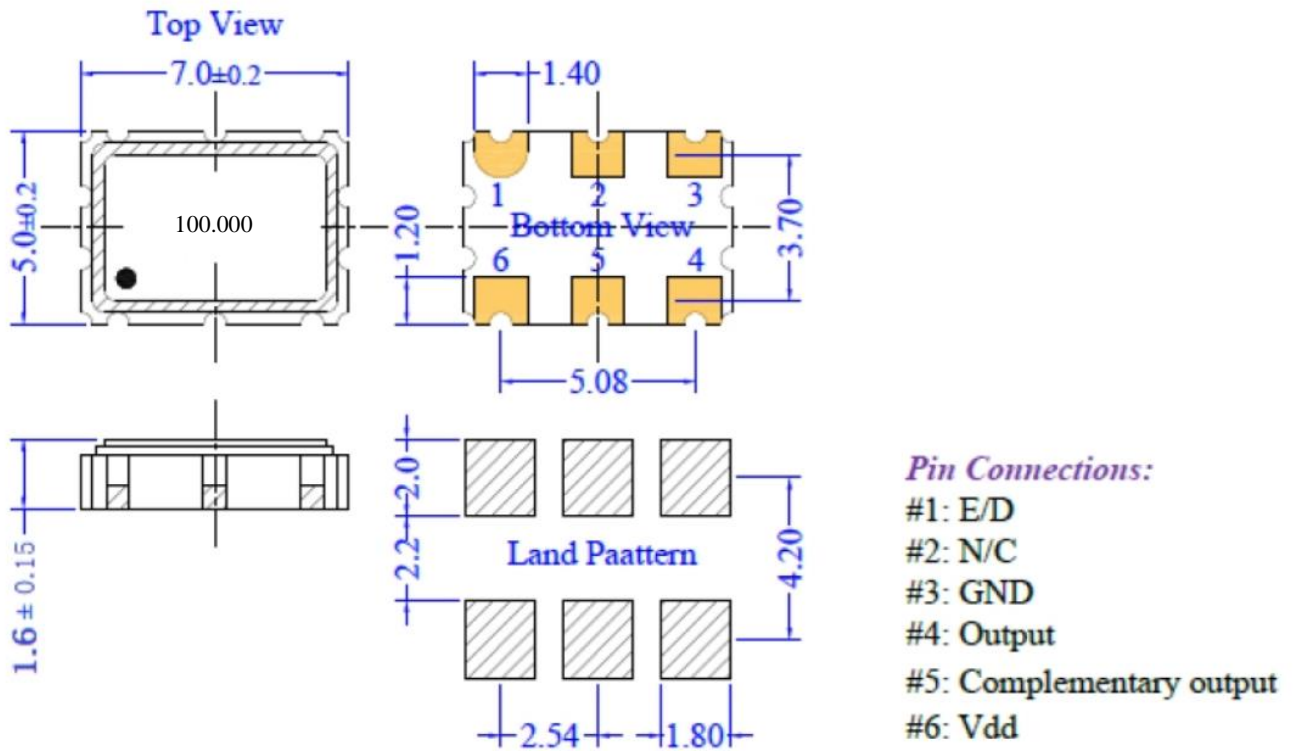




### 3、 Output Waveform



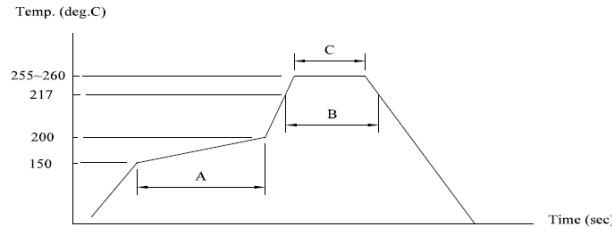
### 4、 Mechanical Structure(mm)



**Note1:** Tolerance ±0.2mm without mark

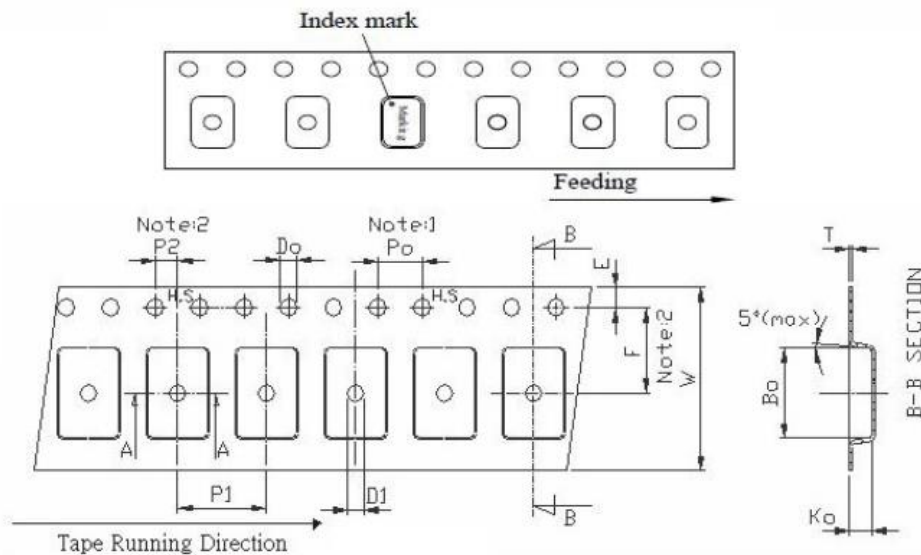


### 5、 Reflow Soldering Curve (RoHS)



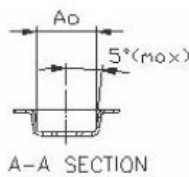
(A)→Preheating area : 150~200°C, 60~120sec.  
 (B)→Heating area : 217°C, 60~150sec.  
 (C)→Peak temperature : 255~260°C, 30sec. Max.  
 Ramp-up rate (217→260°C) : 3°C/sec. Max.  
 Ramp-down rate (260→217°C) : 6°C/sec. Max.  
 Time 25°C→260°C : 480sec. Max.  
 \*Reference JEDEC J-STD-020

### 6、 Package: Tape & Reel (mm)



Unit: mm

Symbol	Spec.
K1	-
Po	4.00±0.10
P1	8.00±0.10
P2	2.00±0.10
Do	1.50 <sup>+0.1</sup> <sub>0</sub>
D1	1.50(min)
E	1.75±0.10
F	7.50±0.10
10Po	40.0±0.10
W	16.0±0.30
T	0.30±0.05



Ao = 5.40±0.10 mm  
 Bo = 7.40±0.10 mm  
 Ko = 1.90±0.10 mm

- Notice:
- 1.10 Sprocket hole pitch cumulative tolerance is ±0.10 mm
  2. Pocket position relative to sprocket hole measured as true position of pocket not pocket hole.
  3. Ao & Bo measured on a place 0.3mm above the bottom of the pocket to top surface of the carrier.
  4. Ko measured from a plane on the inside bottom of the pocket to the top surface of the carrier.
  5. Carrier camber shall be not than 1mm per 100mm through a length of 250mm.