

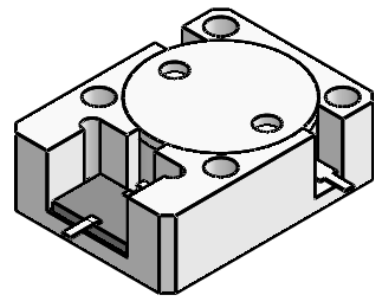


DP2769S

ENG PART:DP-19.1X25.4ID-869T894-CW

869MHz to 894MHz Single-Junction Drop-in Isolator

REV.	DESCRIPTION	REVISOR	DATE	APPROVED
1	Creating datasheet	ZC.Wu	2023/8/8	Nick
2	Change the operating frequency from 869~884 to 869~894	ZC.Wu	2023/8/16	Nick

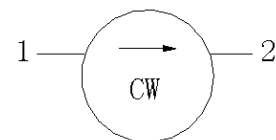


Applications:

- Wireless Infrastructure
- Power Amplifier

Features:

- Operating frequency range: 869MHz to 894MHz
- Operating temperature range: -40°C to +85°C
- Storage temperature range: -50°C to +125°C
- Small surface-mount package delivered on T&R
- BeO free & RoHS compliant



Block Diagram



Electrical Specifications:

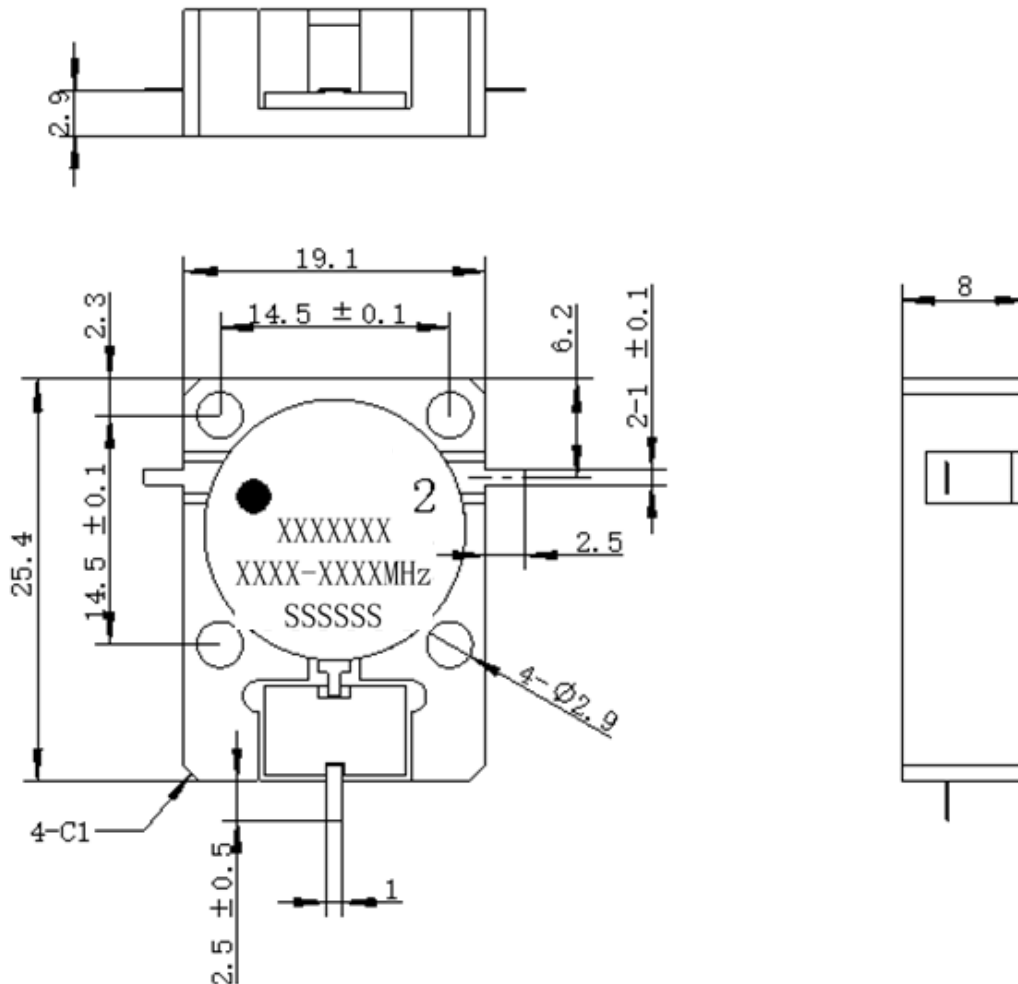
ITEM	SPECIFICATION	
Frequency	869~894	MHz
Extend frequency	-	MHz
Direction	CW	
Impedance	Typ: 50	Ω
Insertion Loss (Max.)	0.25 Typ. 0.28 @-40~+85°C	dB
Isolation (Min.)	25 Typ. 21 @-40~+85°C	dB
Return Loss (Min.)	25 Typ. 21 @-40~+85°C	dB
3rd IMD (Max.)	-75 (Typ.) @2X40dBm, CW tones spacing 1MHz -70@2X40dBm, CW tones spacing 1MHz	dBc
2nd harmonic Rejection	25	dB
3rd harmonic Rejection	-	dB
Power FWD/REV/PEAK	200/150/1000	W
Termination/Attenuator	150/30	W/dB
Input Impedance ,real	-	Ω
Input Impedance ,imaginary	-	Ω

Notes:

1. Exposure to maximum rating conditions for extended periods may reduce device reliability. There is no damage to device with only one parameter set at the limit and all other parameters set at or below their nominal value. Exceeding any of the limits listed here may result in permanent damage to the device.
2. Performance is guaranteed under the conditions listed in this table and over the operating temperature range.
3. Performance will not degrade by > 10% with operatingtemperatureup to 130 °C.



Mechanical Specifications:



Unit: Millimeters

Notes:

1. The circuit is silver-plated.
2. Tolerance ±0.2mm unless otherwise specified.
3. Co-planarity Specification: 0.1mm maximum.
4. Part Number, Lot Code, and Port Designation are printed on the top side of device.
5. Part Number format shall be XXXXXXX
6. The XXXX-XXXX on the label represents the operating frequency
7. The SSSSSS on the label represents the serial number
8. The black dot on the label represents the input port